

# The KGet Handbook

Gaurav Chaturvedi



## The KGet Handbook

# Contents

|          |                                    |           |
|----------|------------------------------------|-----------|
| <b>1</b> | <b>Introduction</b>                | <b>5</b>  |
| <b>2</b> | <b>KGet Drop Target</b>            | <b>6</b>  |
| 2.1      | KGet Drop Target options . . . . . | 6         |
| <b>3</b> | <b>KGet's Configuration window</b> | <b>7</b>  |
| 3.1      | Appearance . . . . .               | 7         |
| 3.2      | Groups . . . . .                   | 8         |
| 3.3      | Network . . . . .                  | 8         |
| 3.4      | Web Interface . . . . .            | 9         |
| 3.5      | Verification . . . . .             | 10        |
| 3.6      | Integration . . . . .              | 11        |
| 3.7      | Advanced . . . . .                 | 11        |
| 3.8      | Plugins . . . . .                  | 12        |
| <b>4</b> | <b>Main Window</b>                 | <b>13</b> |
| 4.1      | The File Menu . . . . .            | 13        |
| <b>5</b> | <b>Credits and License</b>         | <b>17</b> |

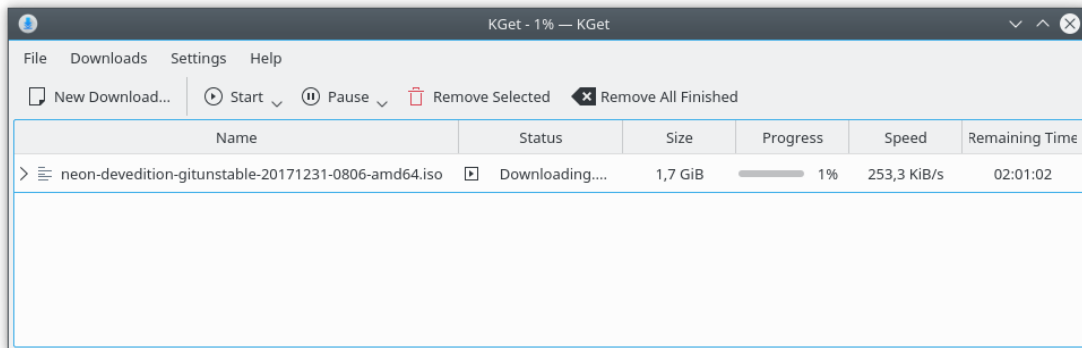
## **Abstract**

KGet is an advanced download manager by KDE

# Chapter 1

## Introduction

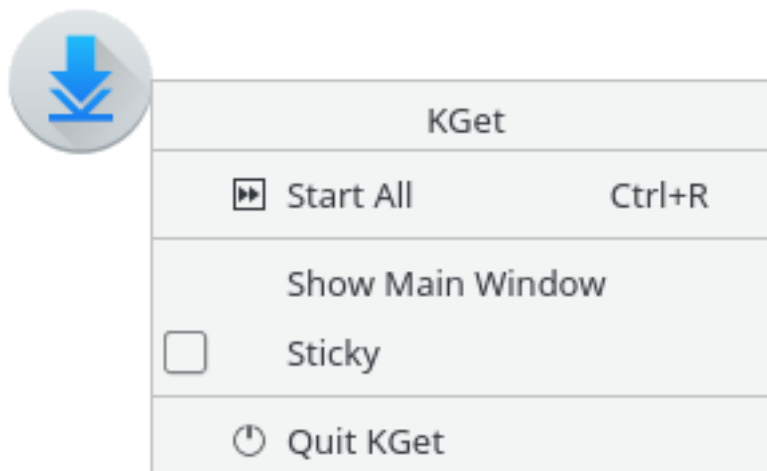
1. Start KGet (you should see a Drop Target)
2. Drag and drop the required URL in the KGet window/Drop Target.



## Chapter 2

# KGet Drop Target

The KGet Drop Target has four options.



### 2.1 KGet Drop Target options

Right click on the drop target to see the options.

#### **Start / Resume All (Ctrl+R)**

To start a download or resume all the pending downloads. The shortcut for doing this is **Ctrl+R**

#### **Show/Hide Main Window**

This option shows or minimizes the main window to the system tray.

#### **Sticky**

Makes the KGet drop target undraggable.

#### **Quit KGet**

Quits KGet

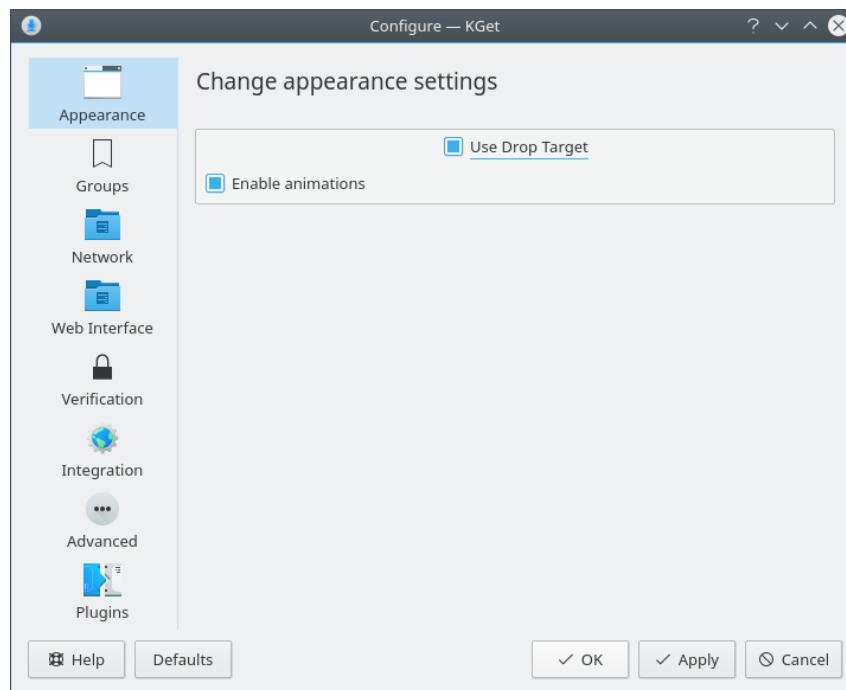
## Chapter 3

# KGet's Configuration window

### Settings → Configure KGet

Opens the KGet configuration window

### 3.1 Appearance



#### Appearance

You can modify the various appearance related stuff here.

#### Use Drop Target

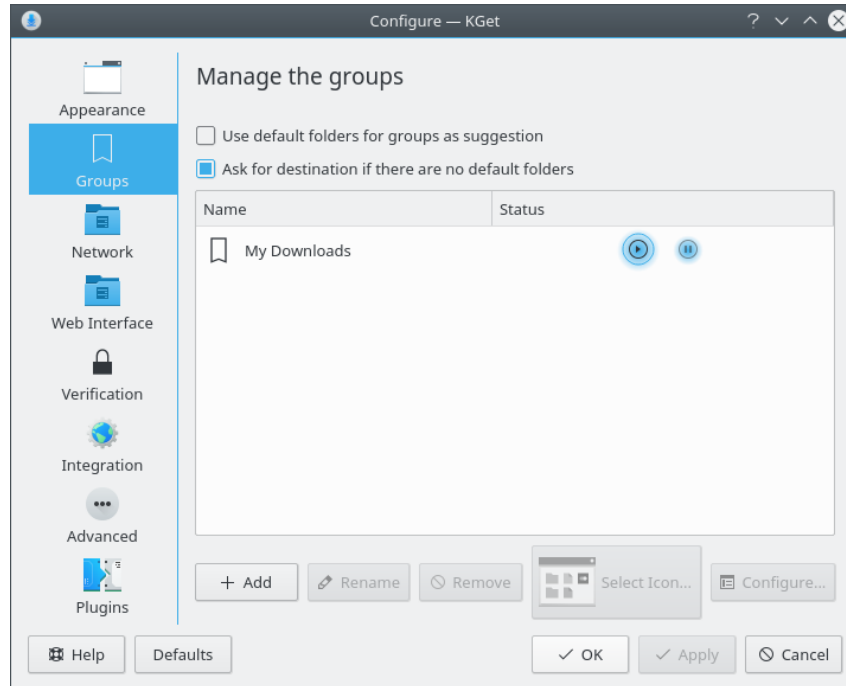
Uncheck this if you do not want the KGet Drop Target.

#### Enable animations

Enables few fancy animations.

## 3.2 Groups

You can group downloads.

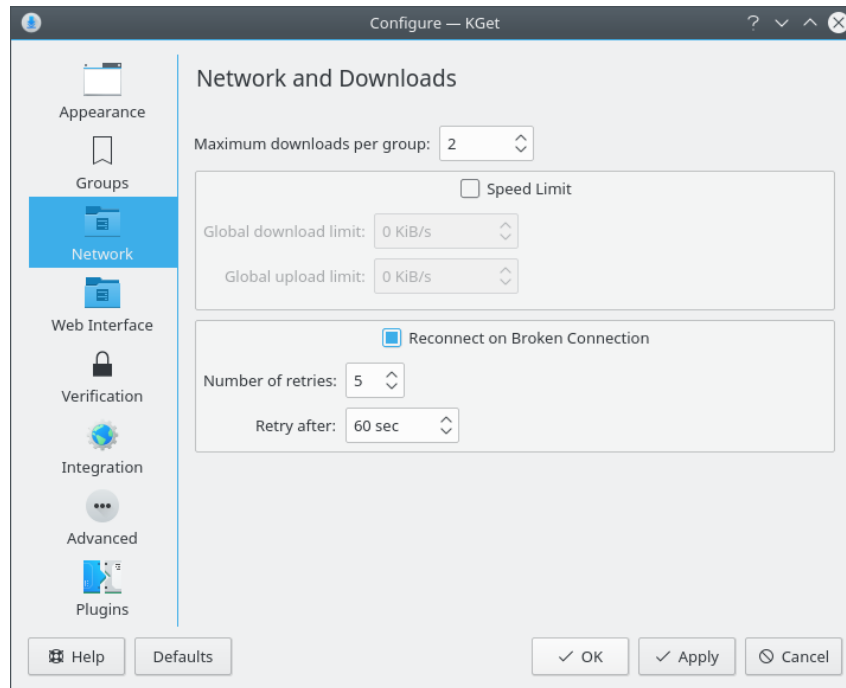


### Use default folders for groups as suggestion

Tick this box if you want KGet to use default folders for your downloads.

## 3.3 Network

You can modify your network related settings here.



### Limit Maximum Downloads Per Group

Check this box if you want Download limits to be implemented.

### Speed Limit

Check this box if you want the Global speed limits to be used.

### Global download limit

Set the maximum global download limit.

### Global upload limit

Set the maximum upload limit.

### Reconnect on Broken Connection

Check this box if you want KGet to reconnect after an error or a broken connection.

### Number of retries

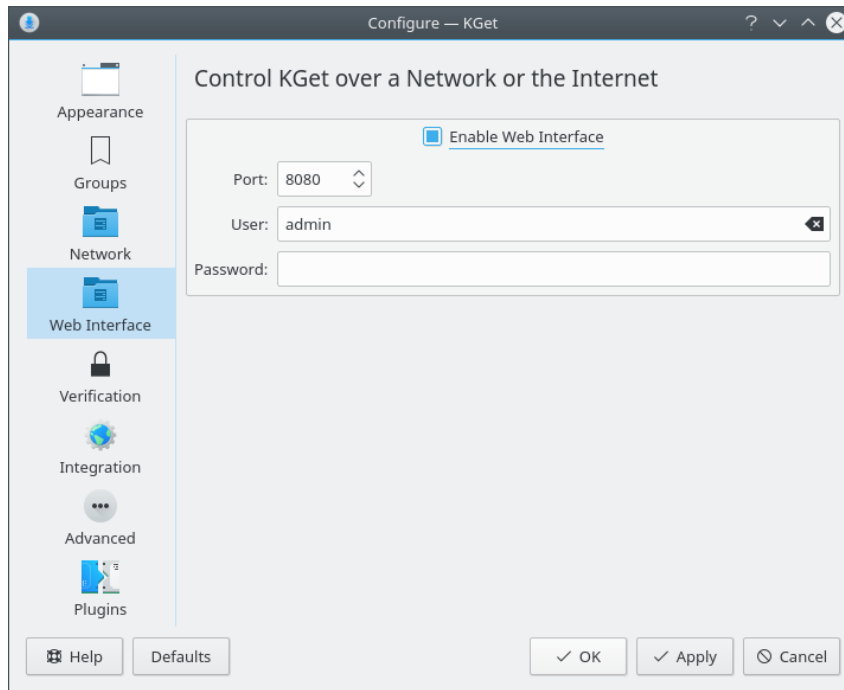
Set the maximum number of time KGet will try to reconnect.

### Retry after

Set the retrying interval here (in seconds)

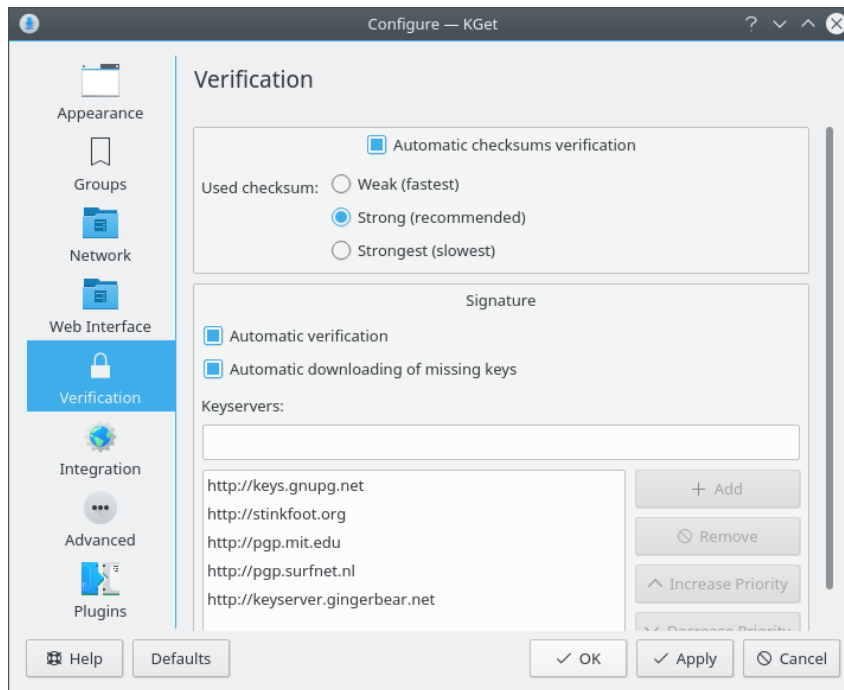
## 3.4 Web Interface

To enable the web interface, check **Enable Web Interface**; default port is 8080, and you configure any port higher than 1024. Then set **User** and **Password**. You can access your web interface at `http://127.0.0.1:<port>`. You will need to enter the username and password to get access.



### 3.5 Verification

Verify your downloads.



Using the two methods **Automatic checksums verification** and **Signature** you can verify your downloads. You just have to tick the **Automatic verification** check box.

## 3.6 Integration

### Use as download manager for Konqueror

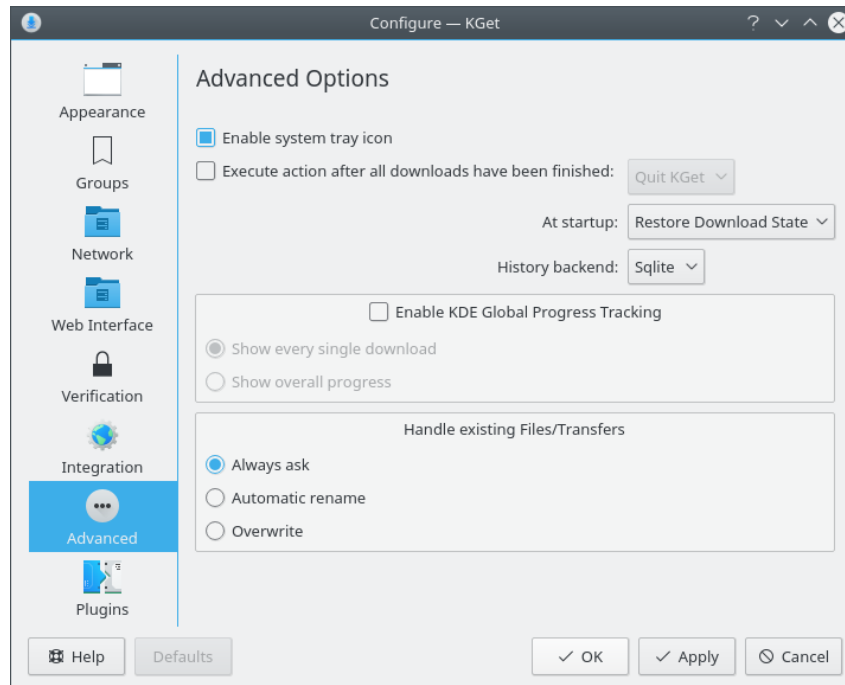
You can set KGet as your download manager for Konqueror.

### Monitor clipboard for files to download

You can turn on this feature that asks if you want to download URLs copied into the clipboard.

## 3.7 Advanced

Modify Advanced Options.



### Enable system tray icon

This check box enables the KGet system tray icon.

### Execute action after all downloads have been finished

Check this box to enable Quitting KGet after all downloads have finished. At startup you can choose to Restore Download state. Such as Stop All downloads/ Start All downloads.

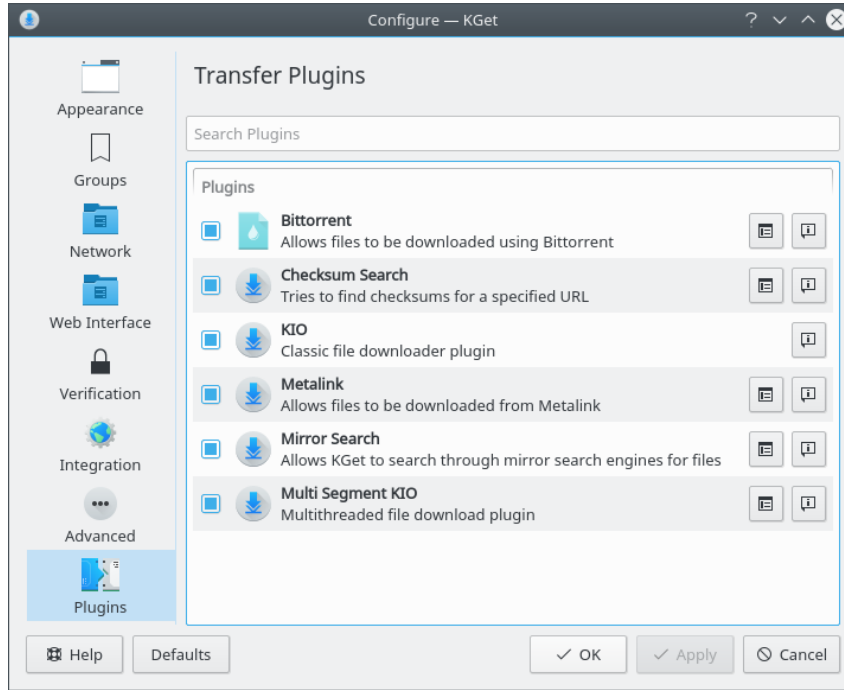
### History backend

You can choose your history backend as Sqlite or Xml.

### Enable KDE global progress tracking

You can set KGet to show every single download or show overall progress.

## 3.8 Plugins



On this page you can select the transfer plugins to be used. Use the

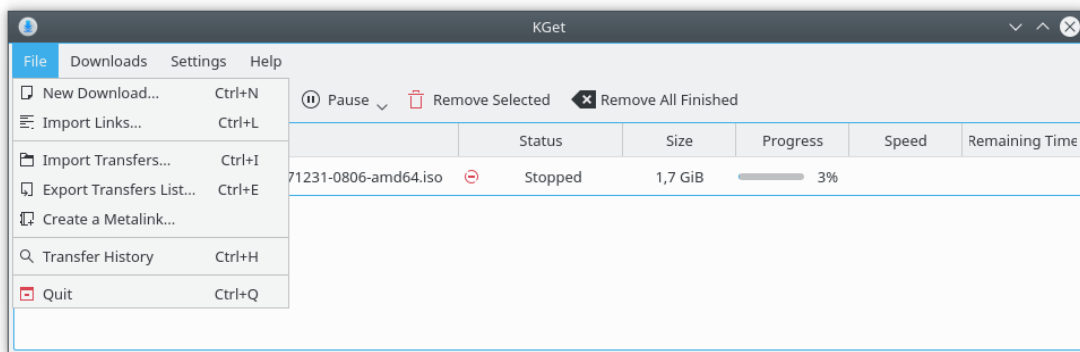


button to change the default settings for a plugin.

## Chapter 4

# Main Window

Overview of KGet's Main Window



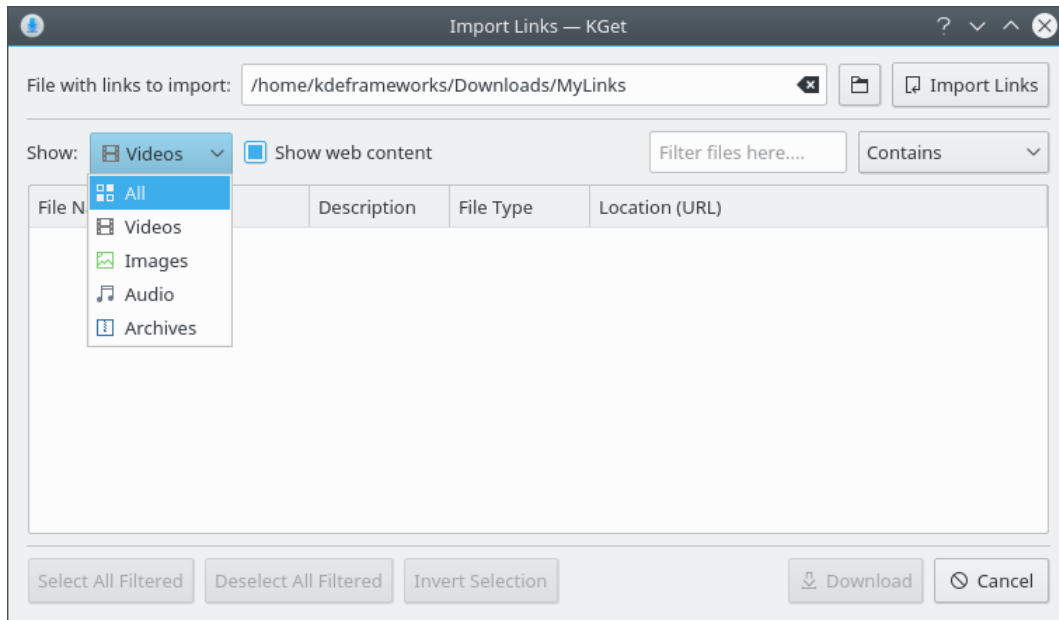
### 4.1 The File Menu

**File** → **New Download... (Ctrl+N)**

Add a new file to download

**File** → **Import Links... (Ctrl+L)**

## The KGet Handbook



This action brings up another window, where you can see and manipulate which file to download. Also you can make a selection based on **Videos**, **Images**, **Audio** and **Archives**. There is also a text box to filter out results.

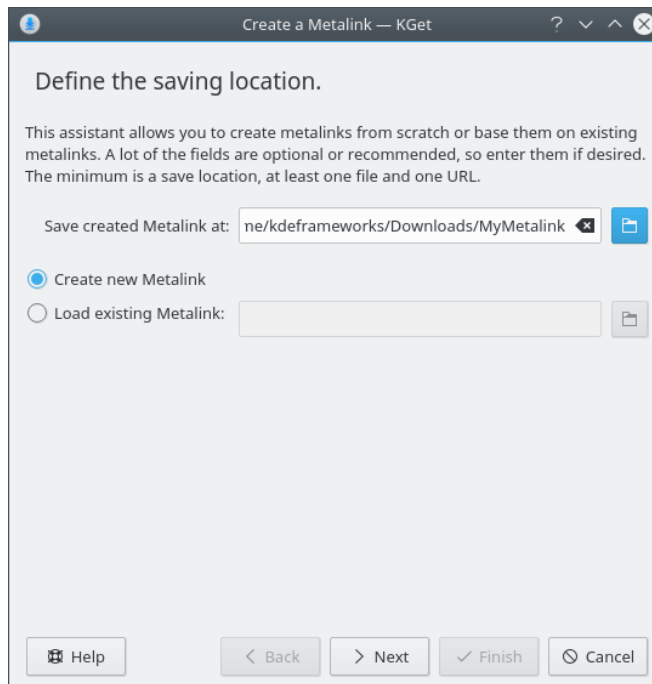
**File** → **Import Transfers... (Ctrl+I)**

Loads a \*.kgt, \*.metalink, \*.meta4 or \*.torrent file.

**File** → **Export Transfers List... (Ctrl+E)**

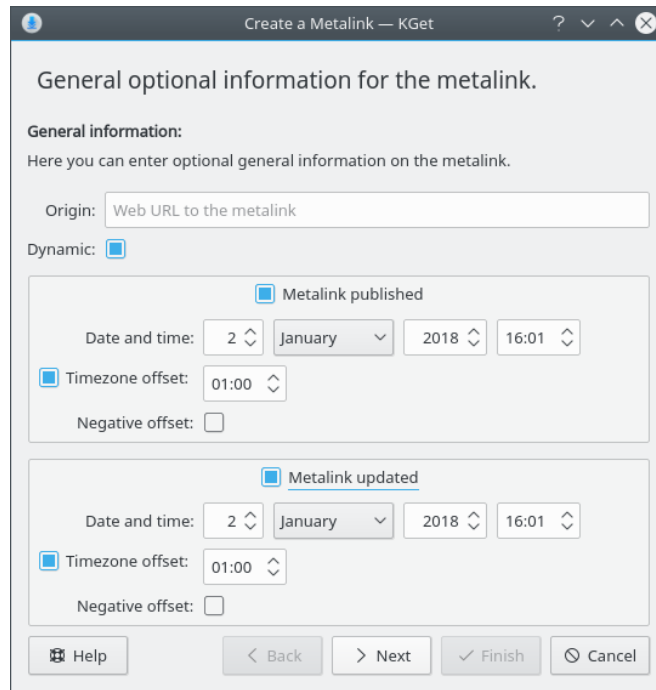
Export the highlighted links to a .kgt file, to be loaded later.

**File** → **Create a Metalink**

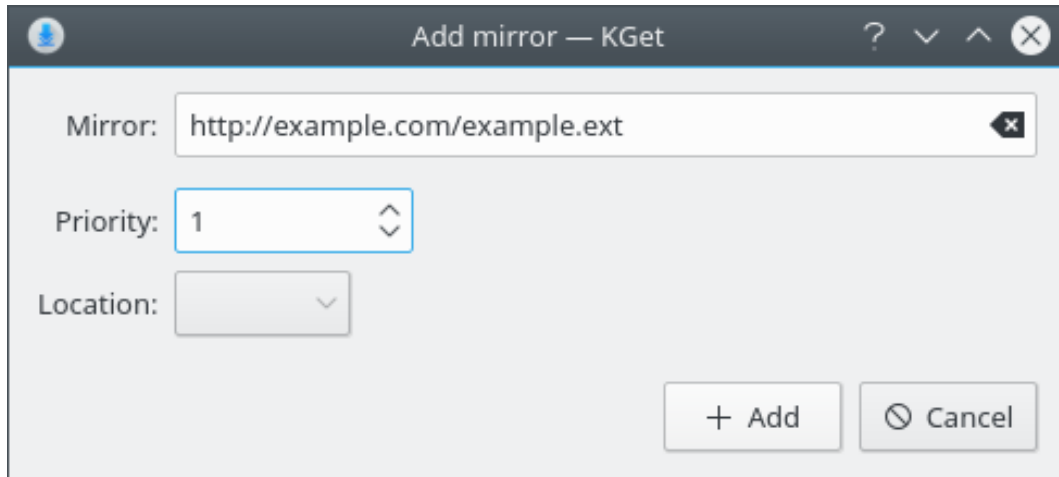


Select between creating a new Metalink and loading an existing Metalink. Click the **Next** button to proceed.

## The KGet Handbook

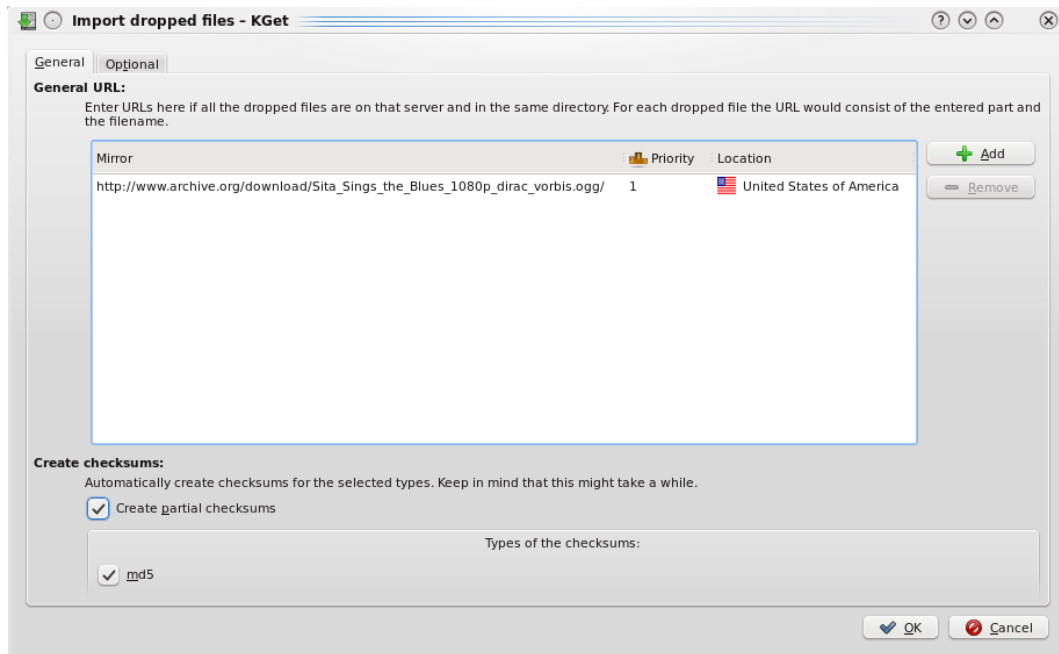


Here you can choose to enter some general optional information. Such as where can this metalink be obtained from (Enter the URL in the text box next to **Origin**).



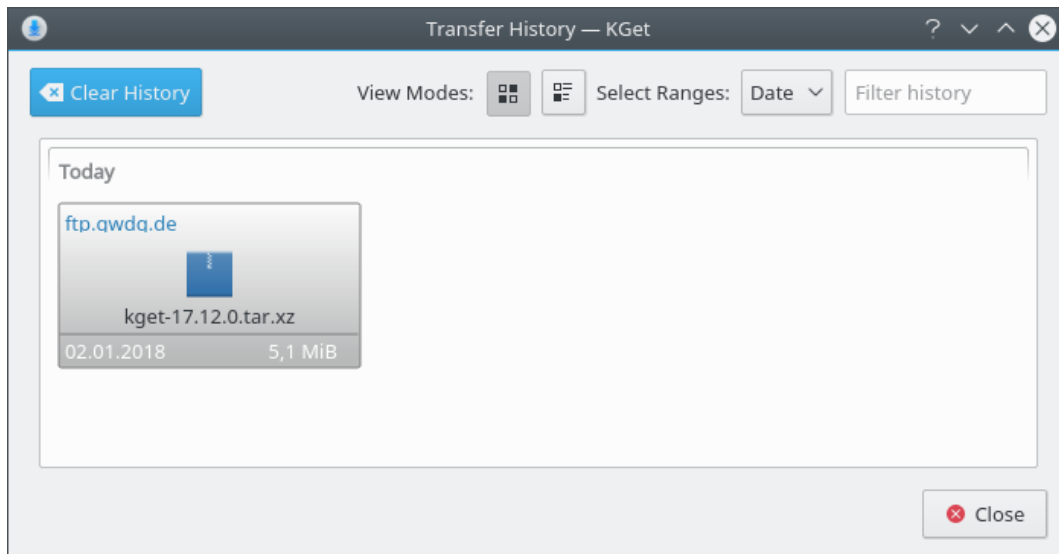
Here you have to enter the URL from where you are trying to download the file. Also you can enter some optional information such as Preference (Priority) for a particular mirror if you are adding more then one mirrors, for the file you want to download.

## The KGet Handbook



You should be able to see a new window where all your files which will be imported will be shown.

### File → Transfer History (Ctrl+H)



Opens a new window where you can see all the files downloaded using KGet. You can manage your history here, including filter and clear the history.

### File → Quit (Ctrl+Q)

Quits KGet

## Chapter 5

# Credits and License

KGet

Documentation copyright (c) 2009 Gaurav Chaturvedi [gaurav.p.chaturvedi@gmail.com](mailto:gaurav.p.chaturvedi@gmail.com)

Thanks to:

Anne-Marie Mahfouf [annma@kde.org](mailto:annma@kde.org) (for helping me with DocBook related stuff)

Jonathan Drews [j.e.drews@att.net](mailto:j.e.drews@att.net) (copy and pasted a lot of things from his old KGet documentation)

This documentation is licensed under the terms of the [GNU Free Documentation License](#).

This program is licensed under the terms of the [GNU General Public License](#).