

# **The GCompris Teachers Administration Handbook**

**Johnny Jazeix**

**Timothée Giet**

**Developers: The GCompris Teachers Team**



# The GCompris Teachers Administration Handbook

# Contents

<b>1</b>	<b>Overview</b>	<b>5</b>
<b>2</b>	<b>Specifications</b>	<b>6</b>
2.1	Main screen overview . . . . .	6
2.2	Dashboard - Login dialog . . . . .	7
2.3	Manage groups and pupils . . . . .	8
2.3.1	Create a group . . . . .	8
2.3.2	Modify a group name or Delete it . . . . .	9
2.3.3	Create a single pupil . . . . .	10
2.3.4	Create several pupils using csv strings / Export pupils to a file . . . . .	10
2.3.5	Managing pupils . . . . .	11
2.4	Connect devices . . . . .	13
2.4.1	Configuration of the server and client devices . . . . .	14
2.4.2	Daily connection workflow . . . . .	15
2.5	Activities . . . . .	18
2.6	Datasets . . . . .	19
2.6.1	Specific activities for the server . . . . .	21
2.7	Charts . . . . .	22
2.8	Settings . . . . .	23
<b>3</b>	<b>Credits and License</b>	<b>25</b>

## **Abstract**

GCompris is a multi-activity educational software. This documentation is for the gcompris-teachers administration tool we provide.

# Chapter 1

## Overview

The goal of gcompris-teachers is to enable teachers to:

- create and manage pupils groups.
- create specific work plans.
- connect and send a work plan to pupils.
- visualize the work results per group and pupil.
- analyse pupils answers.

# Chapter 2

## Specifications

The following section describes the different screens implementing these functionalities.

### 2.1 Main screen overview

The main screen allows to access:

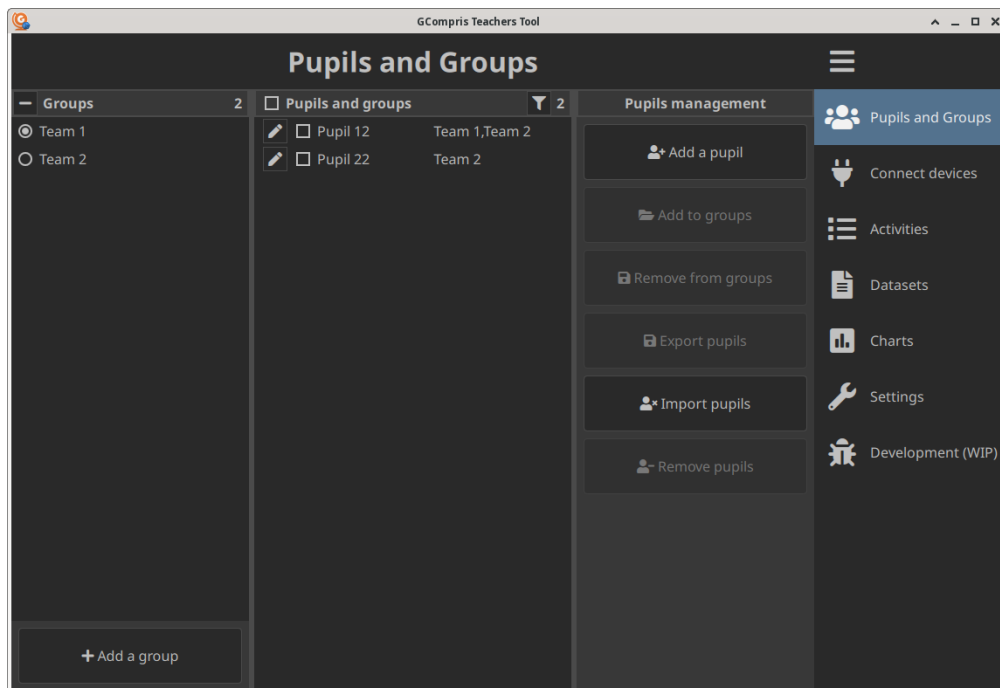
- Dashboard page.
- Manage pupils page.
- Connect devices page.
- Follow activities results page.
- Manage datasets page.
- Display results as charts page.
- Settings page.

By default the Dashboard page is shown, containing the login dialog, and the side menu bar to access the other pages is hidden until a teacher account is logged in.

## The GCompris Teachers Administration Handbook

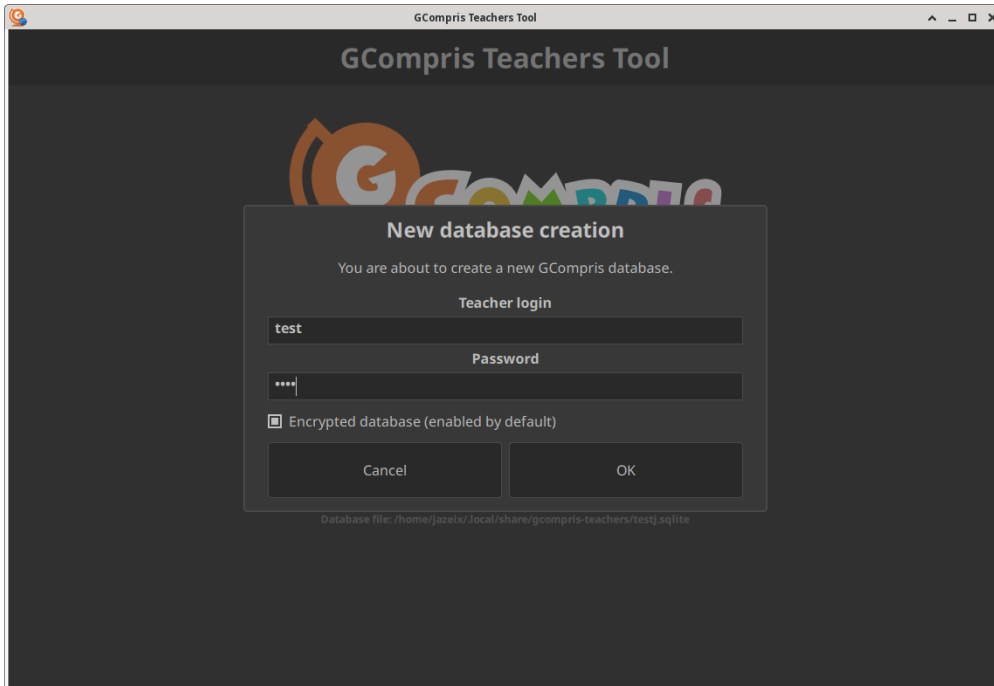


A button to show/hide the title of the buttons in the side menu bar (the hamburger icon) allows to save some space once the user knows the meaning of each icon.



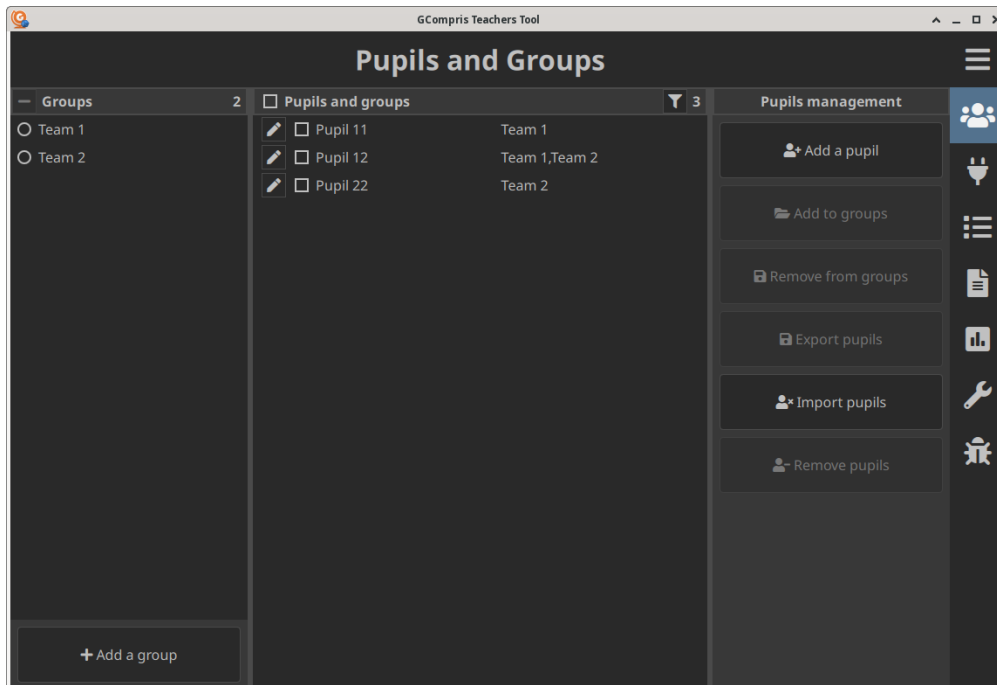
## 2.2 Dashboard - Login dialog

To create a new teacher login and database, input the name and the password. You'll then be able to choose if you want to encrypt the database (to avoid anyone to read it without the password).



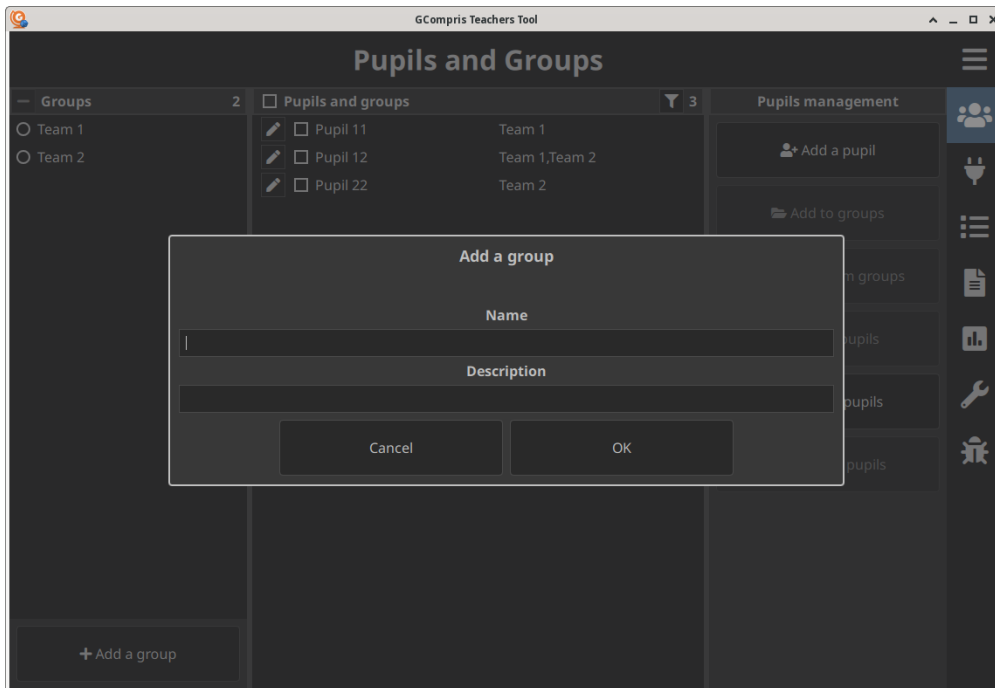
## 2.3 Manage groups and pupils

This page allows to create the different pupils and groups for your class.



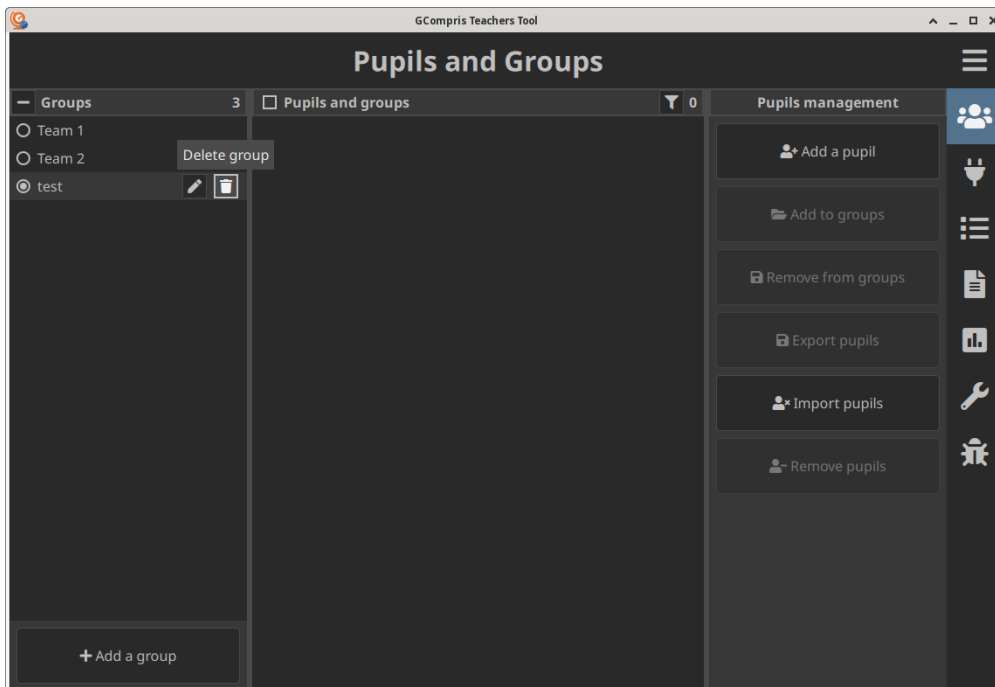
### 2.3.1 Create a group

Click on the 'Add a group' button on the bottom left and in the dialog fill the 'Name' and optionally the 'Description'.

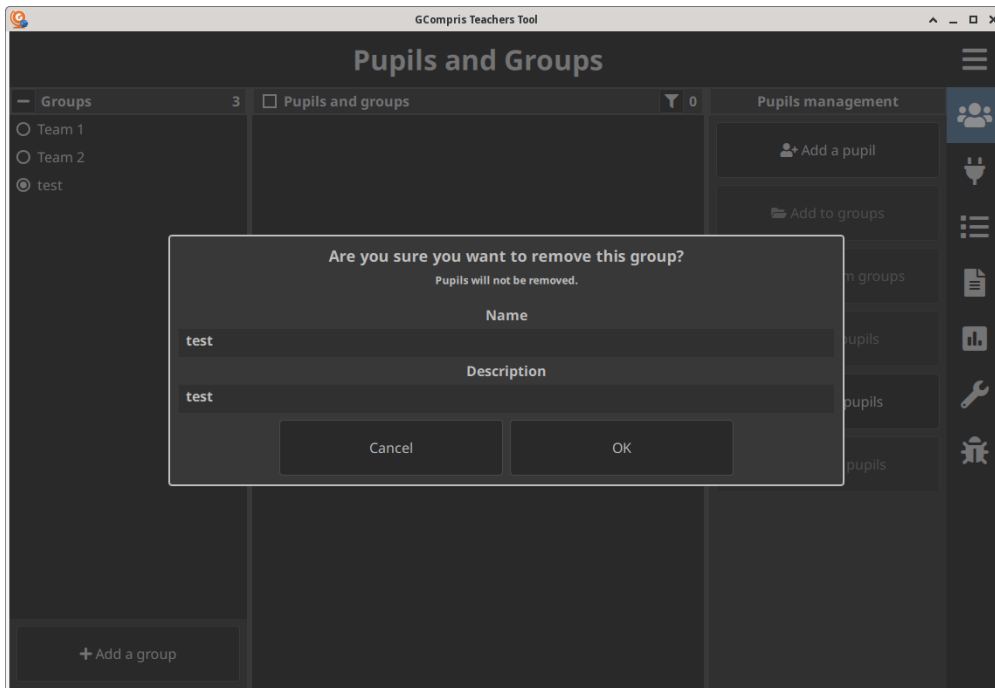


### 2.3.2 Modify a group name or Delete it

To edit or delete a group, hover it on the group list and the 'Edit' and 'Delete' buttons will appear.

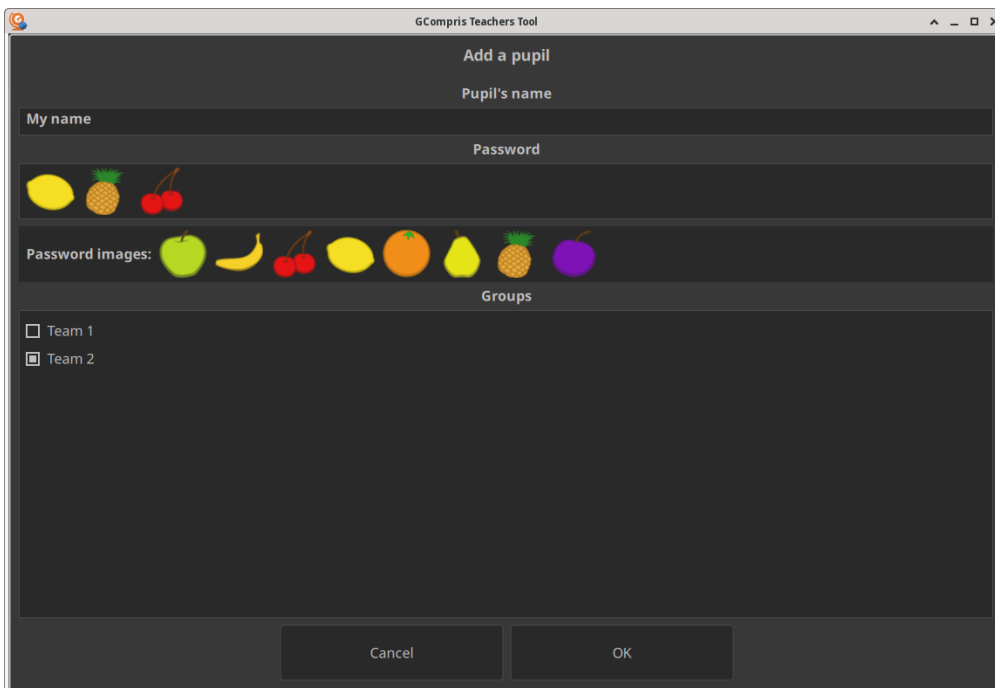


Clicking on the 'Delete' button will allow you to delete the group. Note that the pupils will be removed from the groups but not deleted from the database. If you want to remove pupils, follow the next section.



### 2.3.3 Create a single pupil

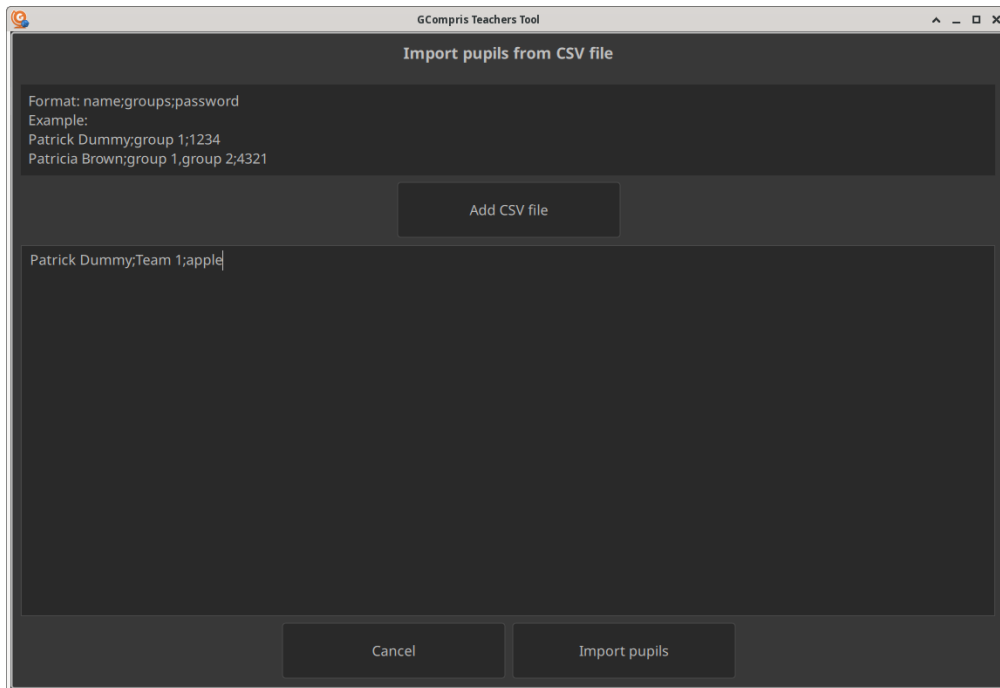
Click on 'Add a pupil' to create a new pupil in the database. There, you can set the pupil's name and the password to connect from the clients. You can also directly add them in pre-existing groups.



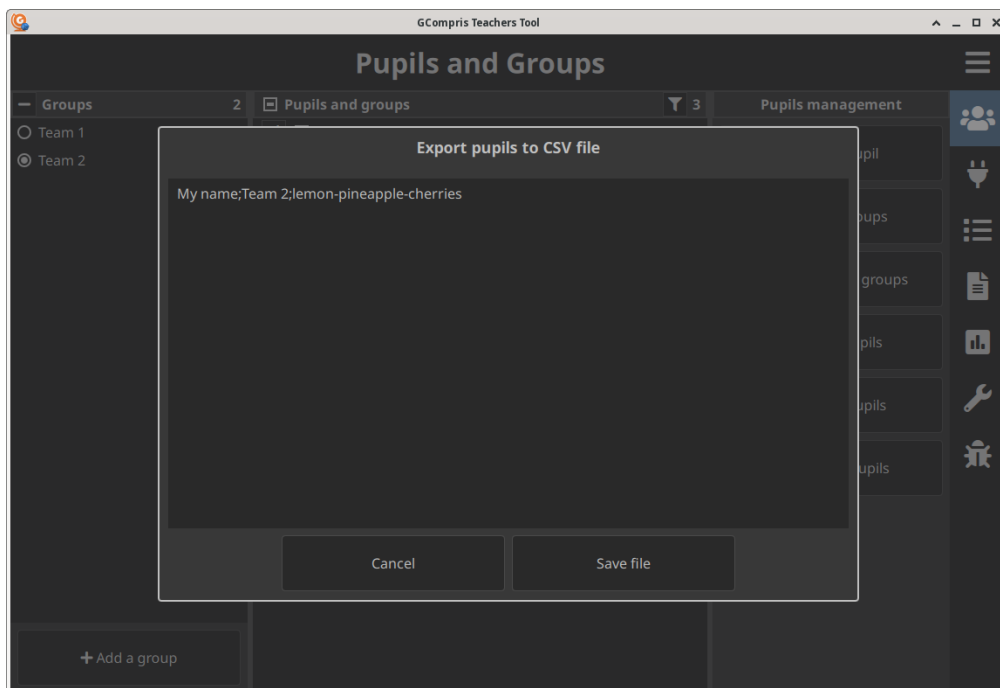
### 2.3.4 Create several pupils using csv strings / Export pupils to a file

You can directly import a list of pupils using a csv file.

## The GCompris Teachers Administration Handbook



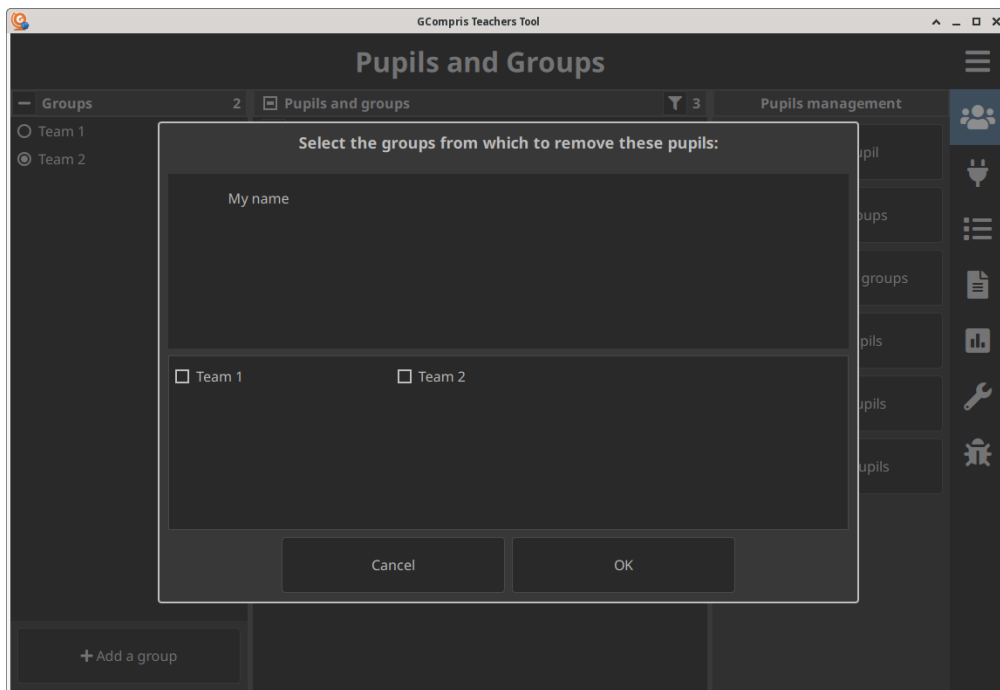
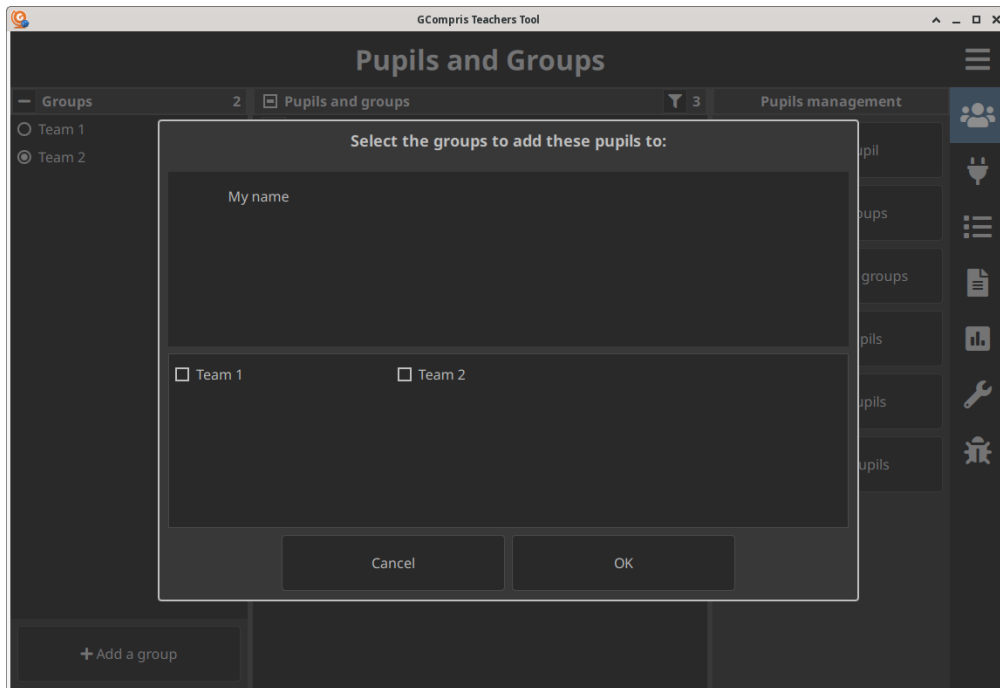
Exporting a list of pupils is also possible:



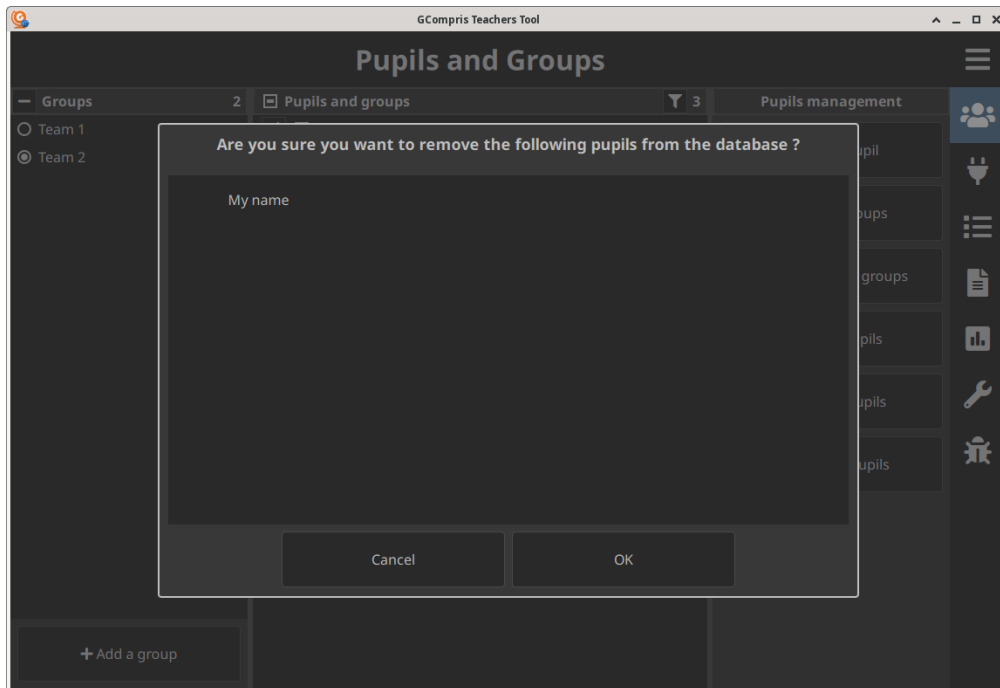
### 2.3.5 Managing pupils

The interface also proposes buttons to edit pupils, add or remove them from groups.

## The GCompris Teachers Administration Handbook

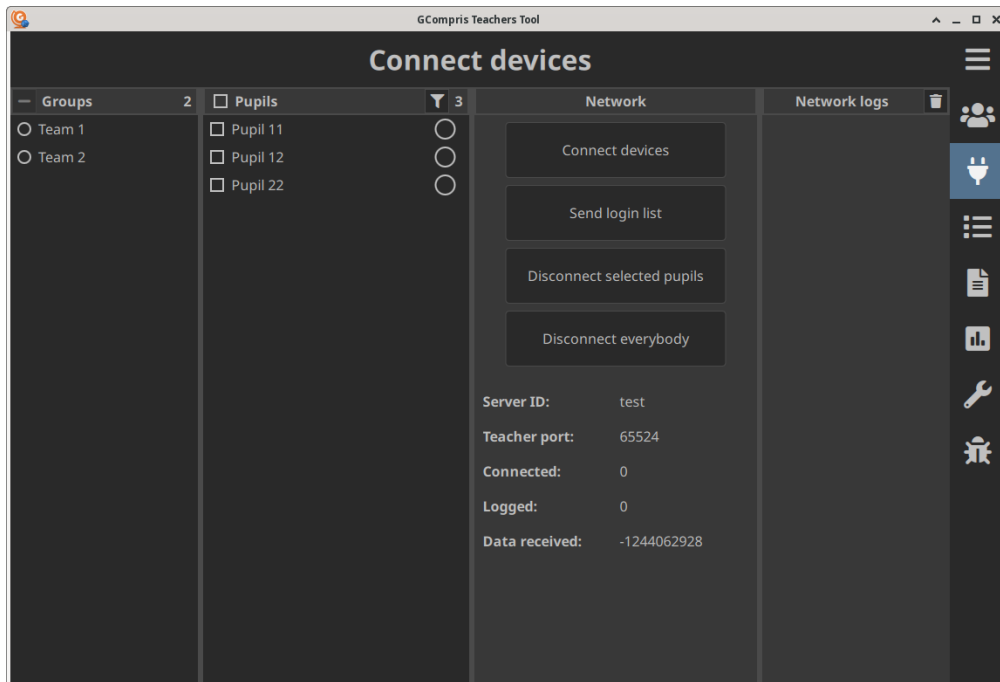


You can also delete pupils. Note that deleting a pupil does not delete its group.



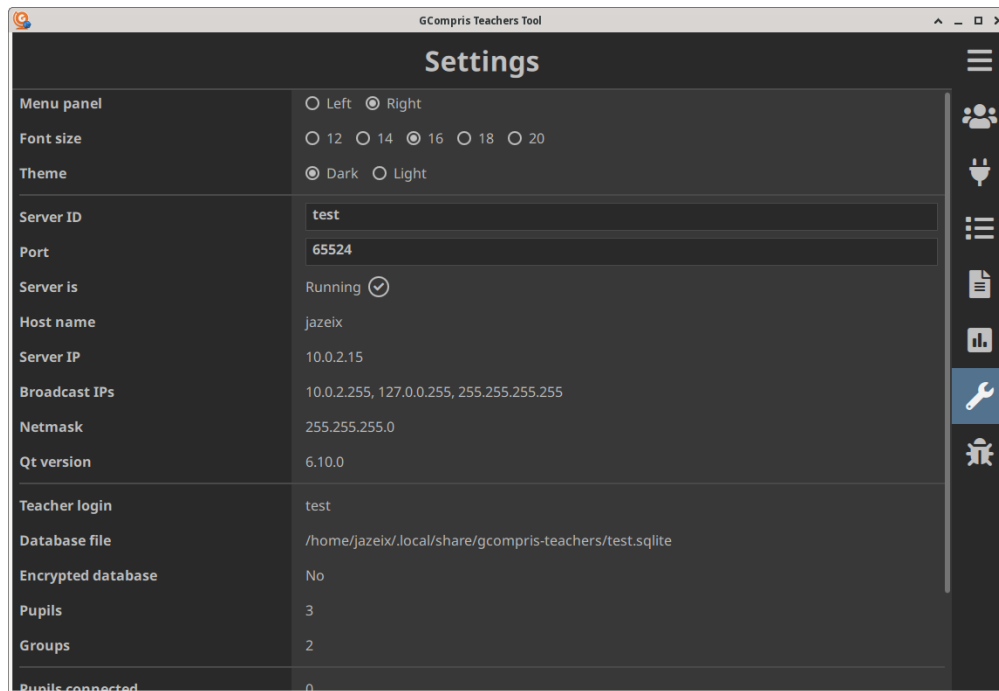
## 2.4 Connect devices

Once the database is ready, it's now time to communicate with the different clients. The 'Connect devices' page shows the different groups and pupils. By default, no group is selected so all the pupils are visible. Selecting a group will filter the visible pupils to only work with this specific group.

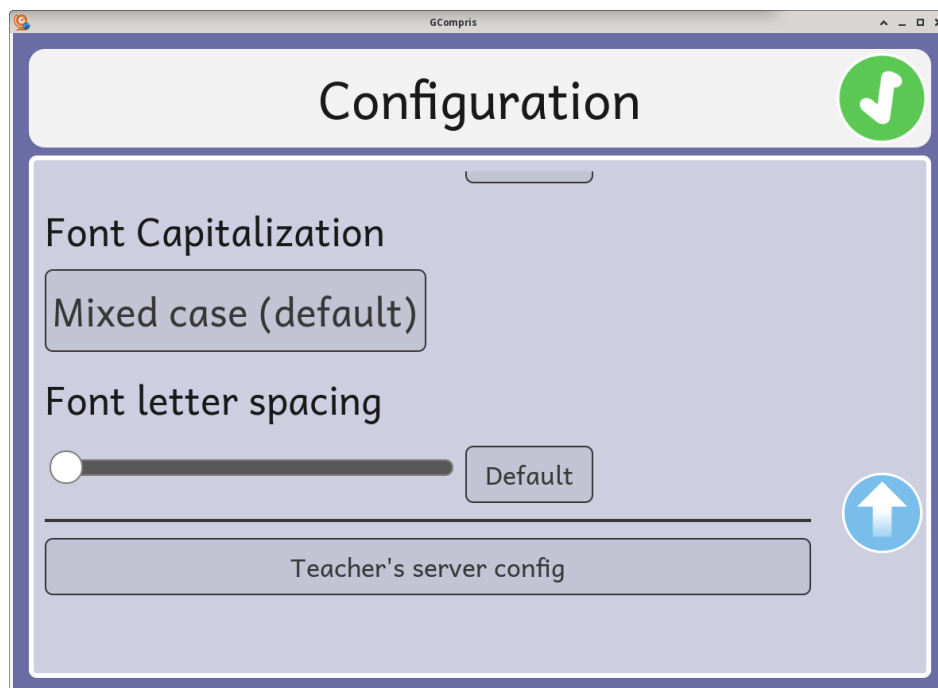


## 2.4.1 Configuration of the server and client devices

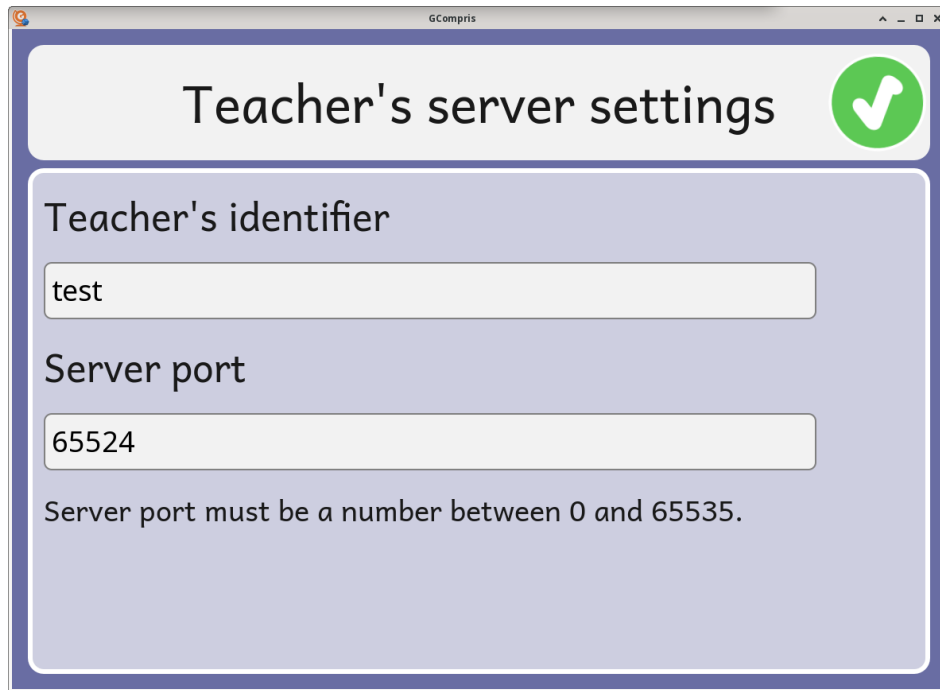
The teacher needs to configure the server and client devices they want to connect to before being able to connect. All the devices need to be connected on the same local network. On the server, go to the 'Settings' page and choose a unique 'Server ID' (at least unique for the local network) and a 'Port' (if you don't know, keep the default one).



On GCompris devices side, go to the 'Configuration' page from the main menu, and scroll to the bottom to find the 'Teacher's server config' button.



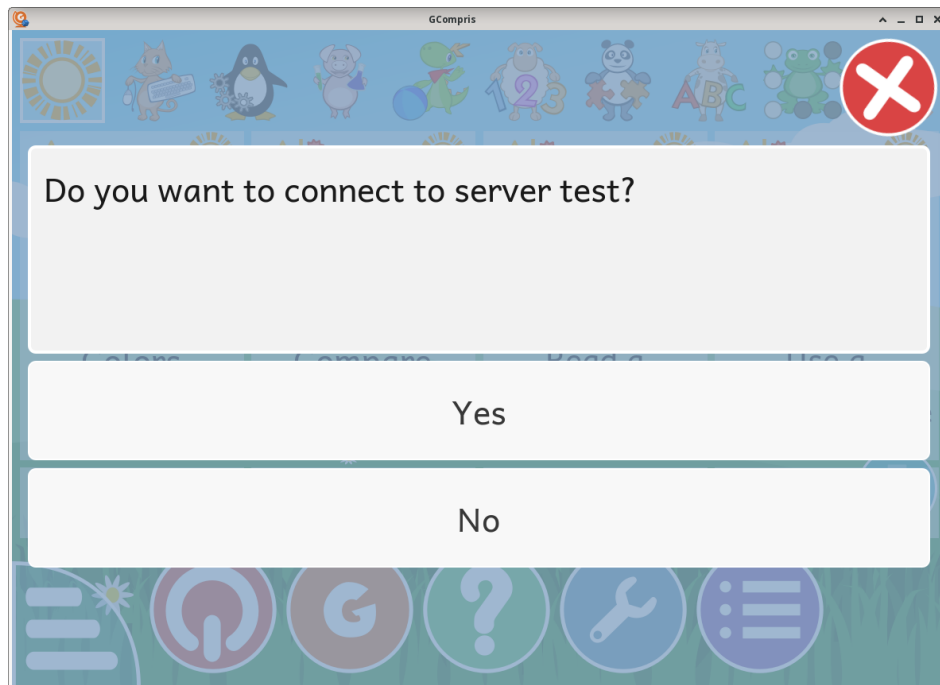
After clicking it, make sure to have the same settings as the server:



Also, if the device running the server or the client has a firewall, make sure to open the chosen port in the firewall configuration to let the devices communicate.

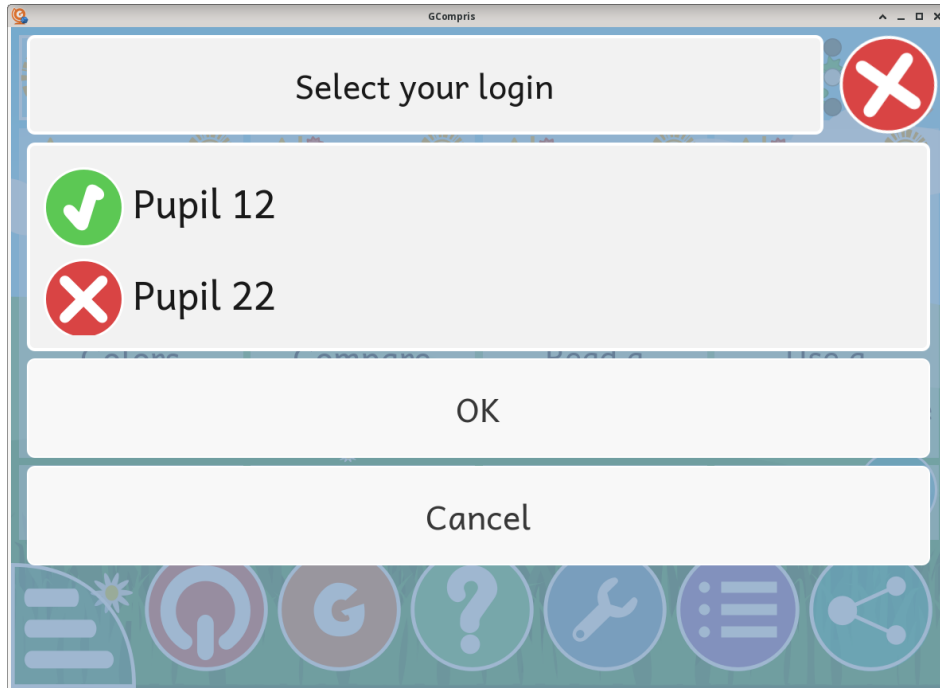
## 2.4.2 Daily connection workflow

The connection workflow is the following: *The teacher asks the pupils to switch on their devices and start GCompris, and then from the Connect devices page press the Connect devices button. On the client devices, a dialog will appear asking confirmation to connect to the server. Note that client devices need to be on the GCompris main menu, not on any activity or configuration page.*

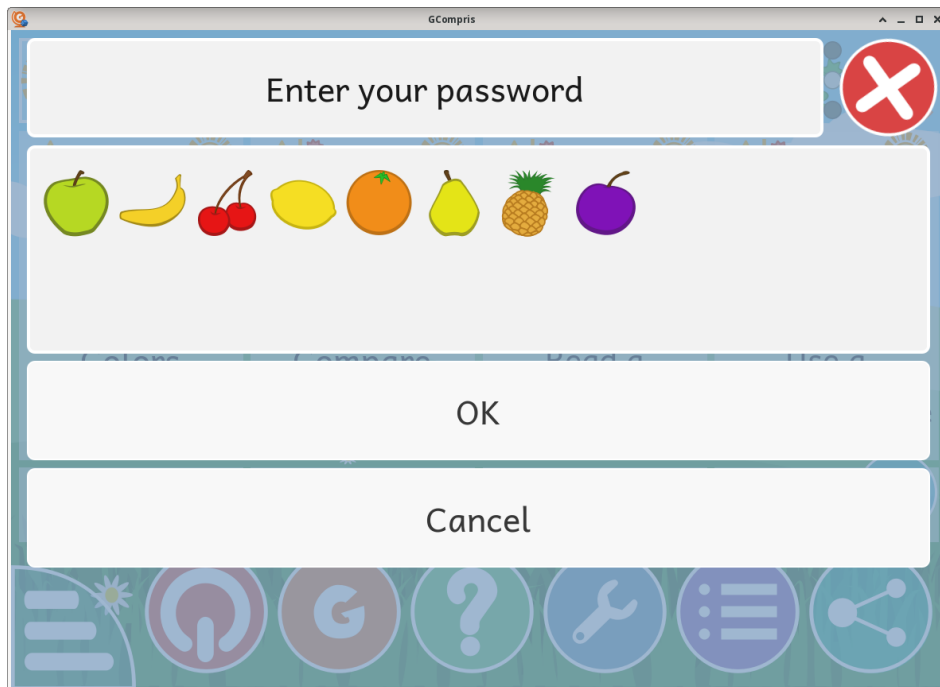


## The GCompris Teachers Administration Handbook

- After confirmation from the pupils, the teacher selects which logins they want to send from the 'Pupils' list and press 'Send login list'
- The client devices will display a new dialog allowing to select the login they want.

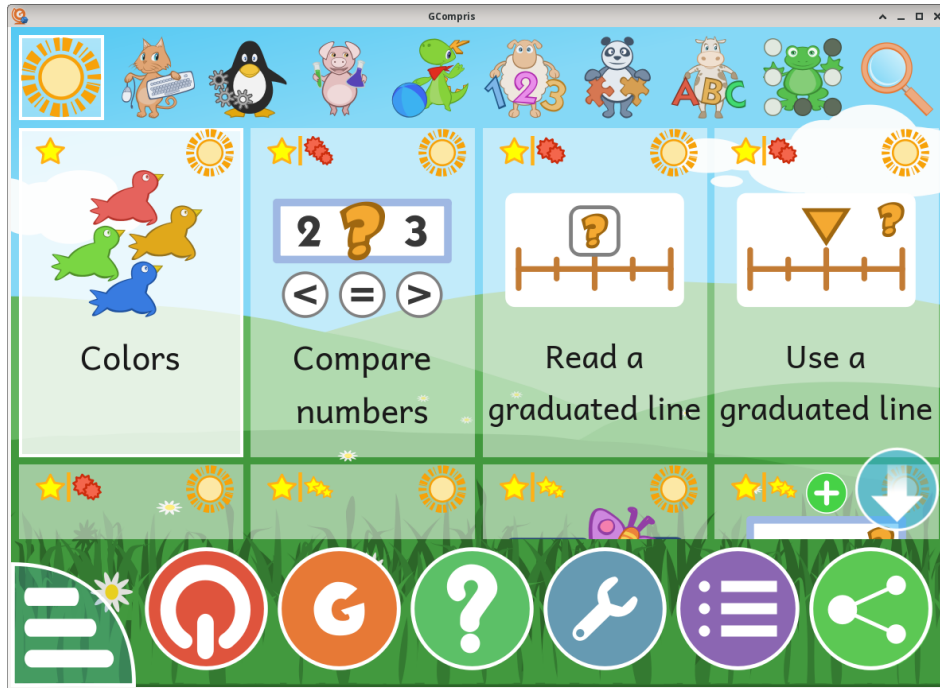


- Once confirmed, a second dialog will open to enter the password.

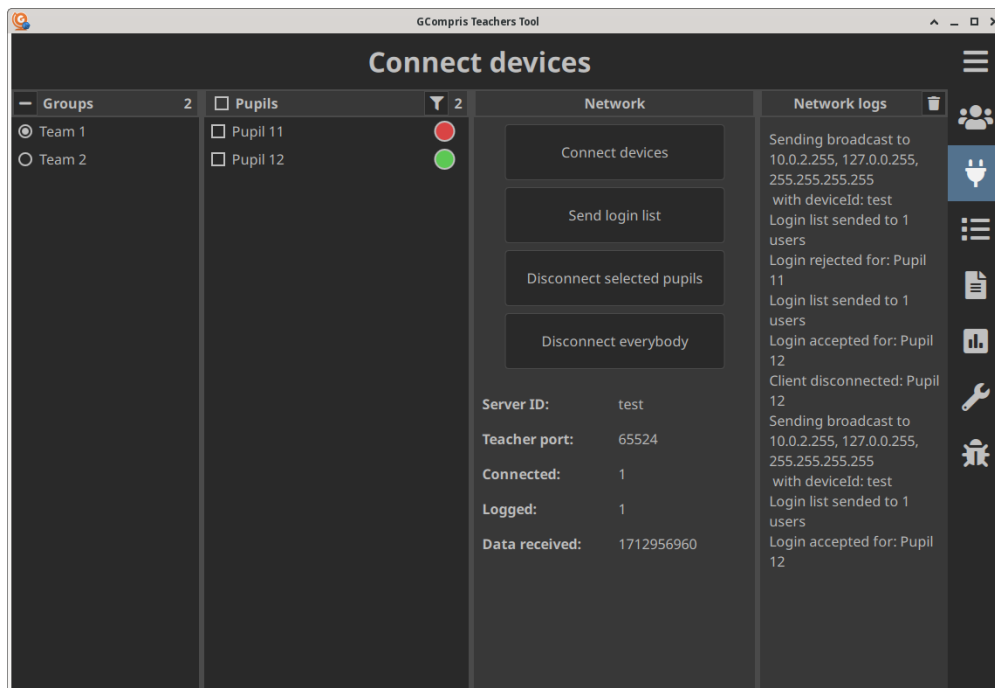


- If the password is correct, the client will see a green button on the bar indicating a successful connection.

## The GCompris Teachers Administration Handbook

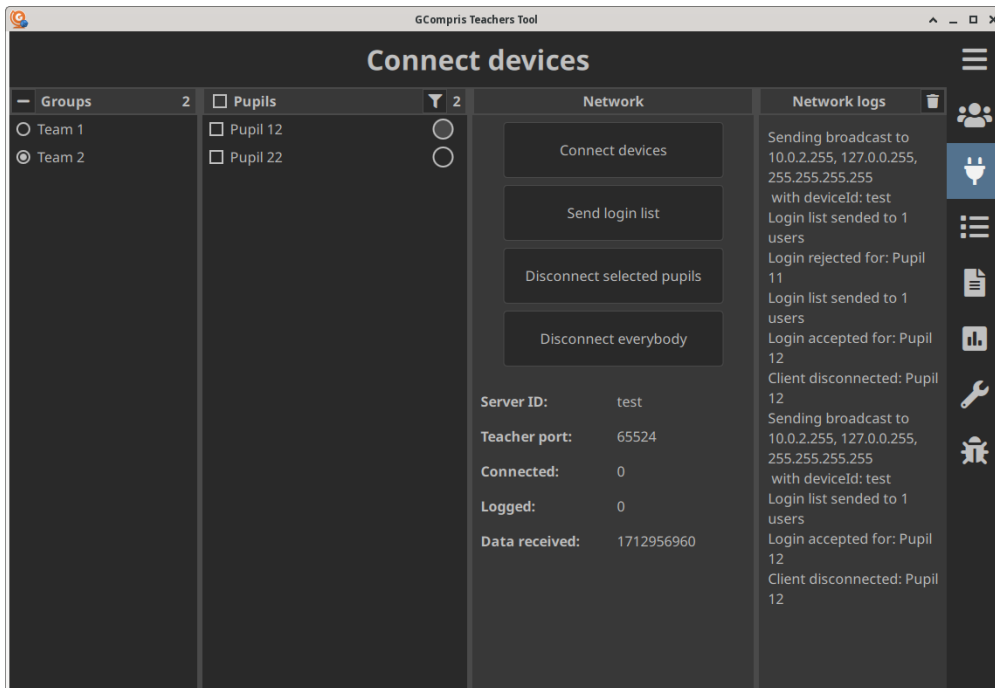


- And the server will receive a notification:



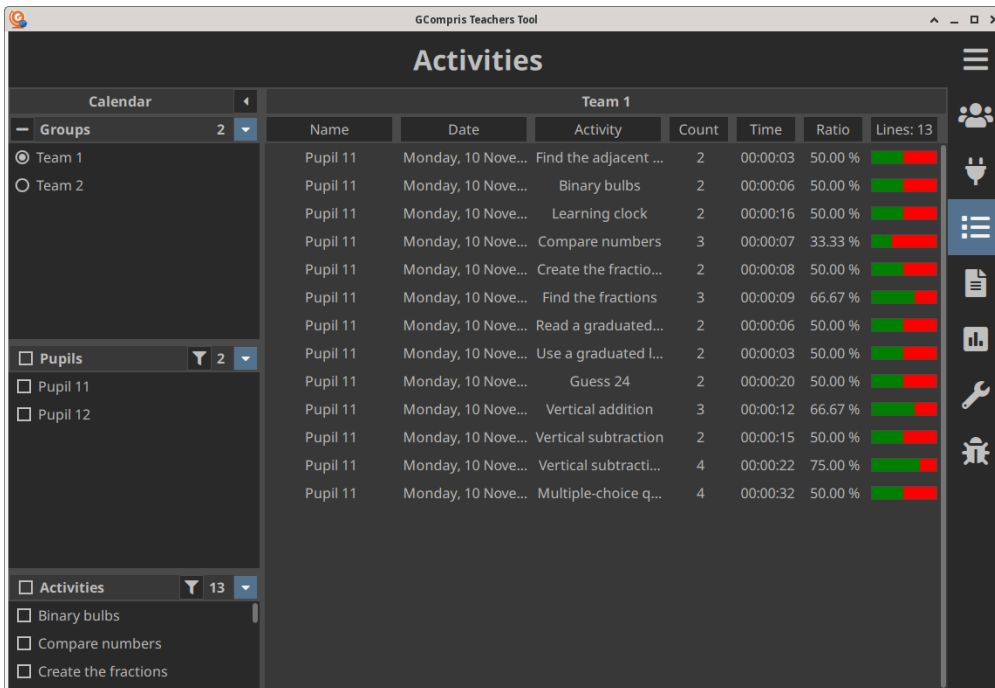
The different colors are:

- Green: connected
- Red: wrong password
- Grey: disconnected (it was connected at some point but got disconnected)
- Transparent: nobody tried to connect using this login.



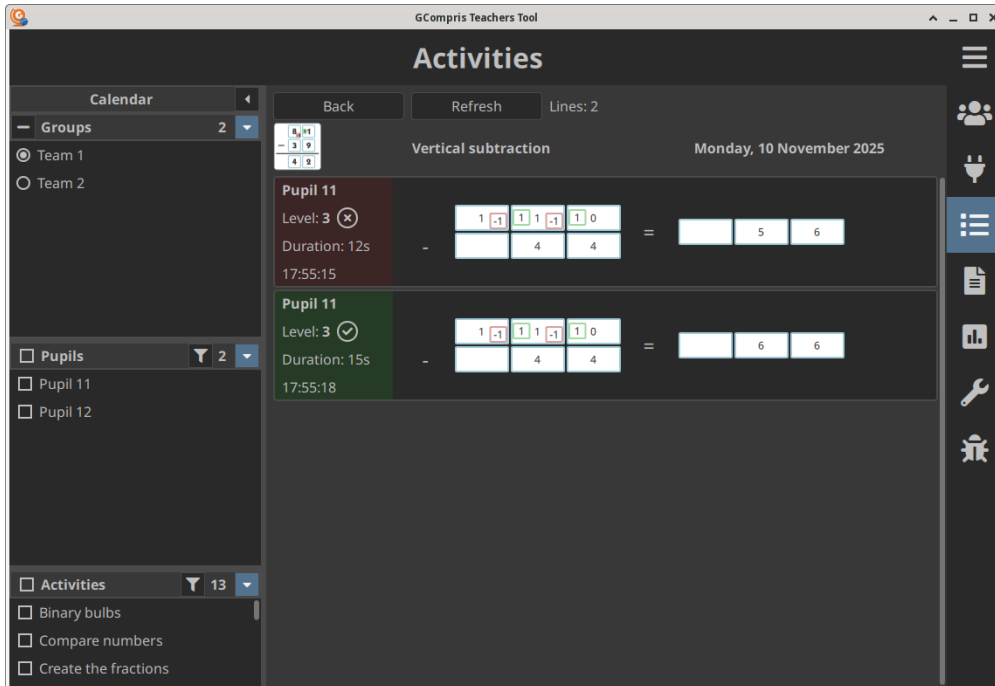
## 2.5 Activities

This page allows to display the different results filtered by date, groups, pupils and activities.



The following image shows the results for the 'Vertical subtraction' activity (each activity which handles sending data to the server has its own visualisation).

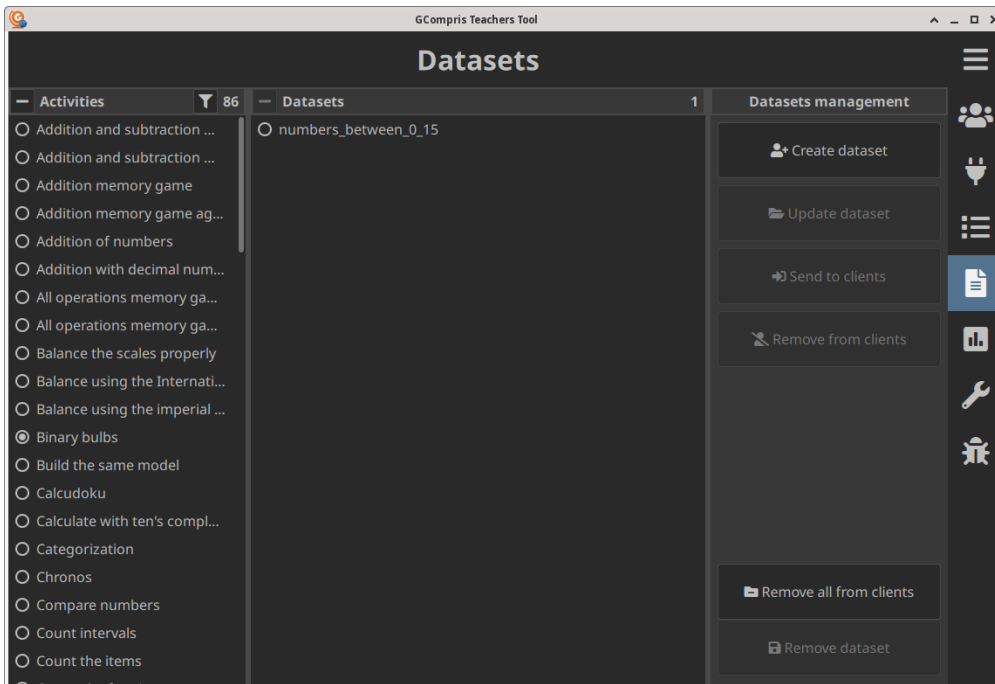
## The GCompris Teachers Administration Handbook



We can see the pupil entered an incorrect answer on the first try and a correct answer on the second try, and the answers details to spot the errors.

## 2.6 Datasets

The datasets page allows teachers to create/update/delete specific datasets for the activities to target specific needs, and send/remove them to/from the clients.

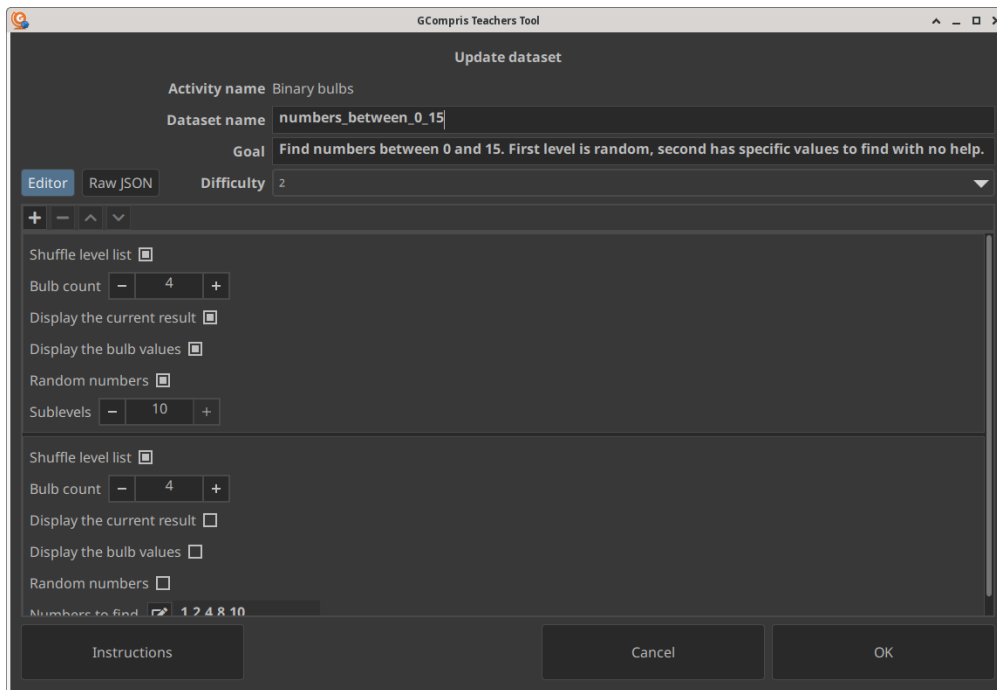


One limitation for now is that only activities following the GCompris dataset format can be edited (so no 'Grammatical classes' or 'Falling words' for example). You can find the list of sup-

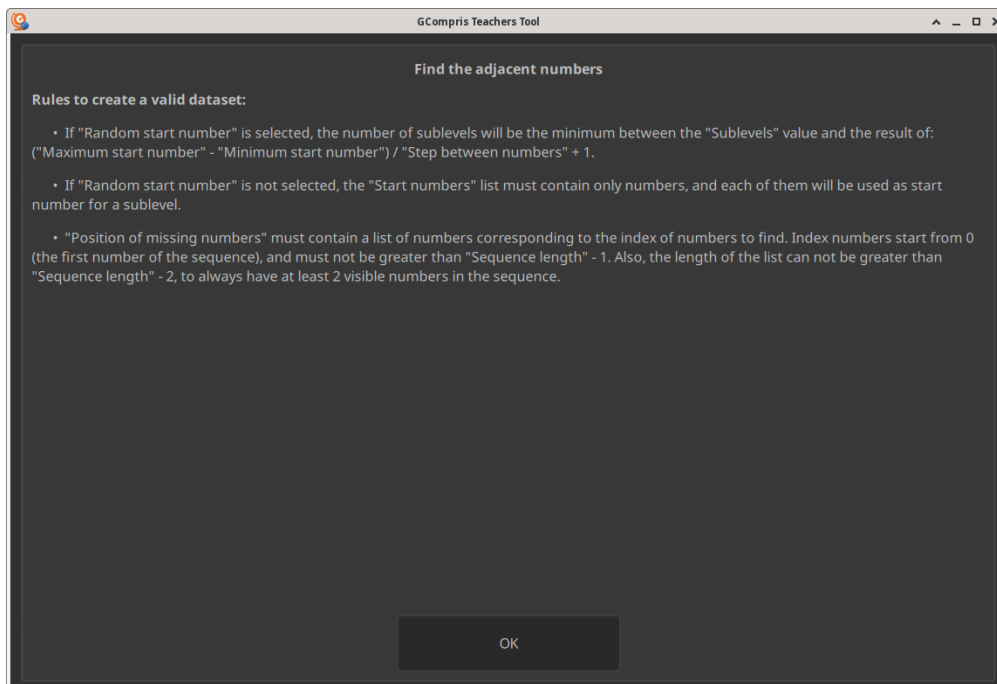
## The GCompris Teachers Administration Handbook

ported activities (which can send data or have a dataset editor) on this page of our development wiki: <https://invent.kde.org/education/gcompris/-/wikis/Teacher-administration-tool#supported-activities>

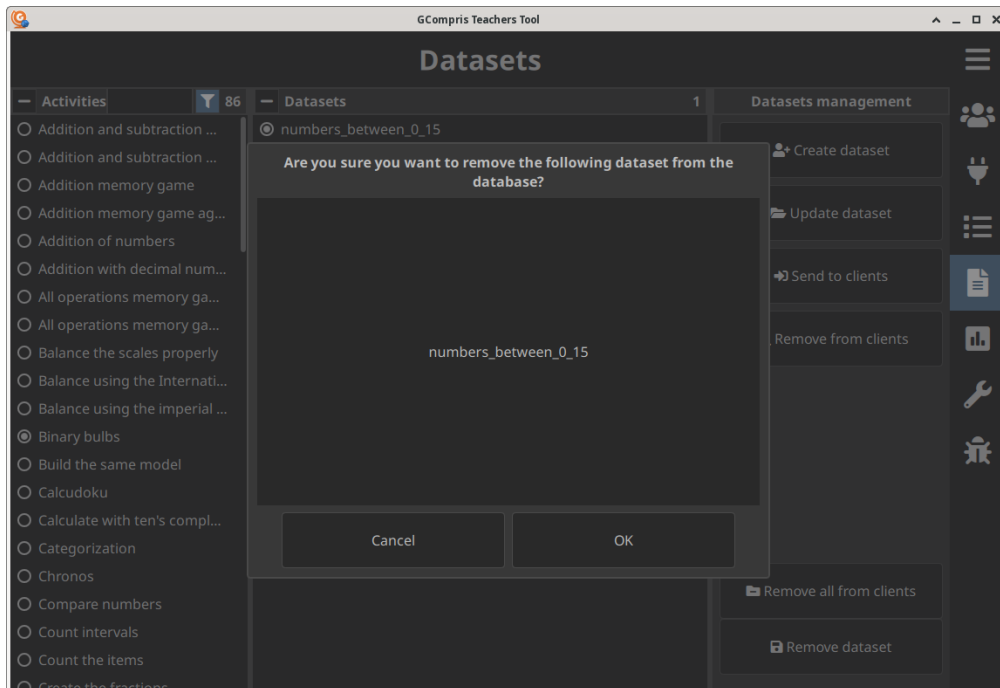
Here is an example for the 'Binary bulbs' activity. The common part of all activity editors contains fields to enter the dataset name, the goal and the difficulty. Then, each activity will have a specific editor.



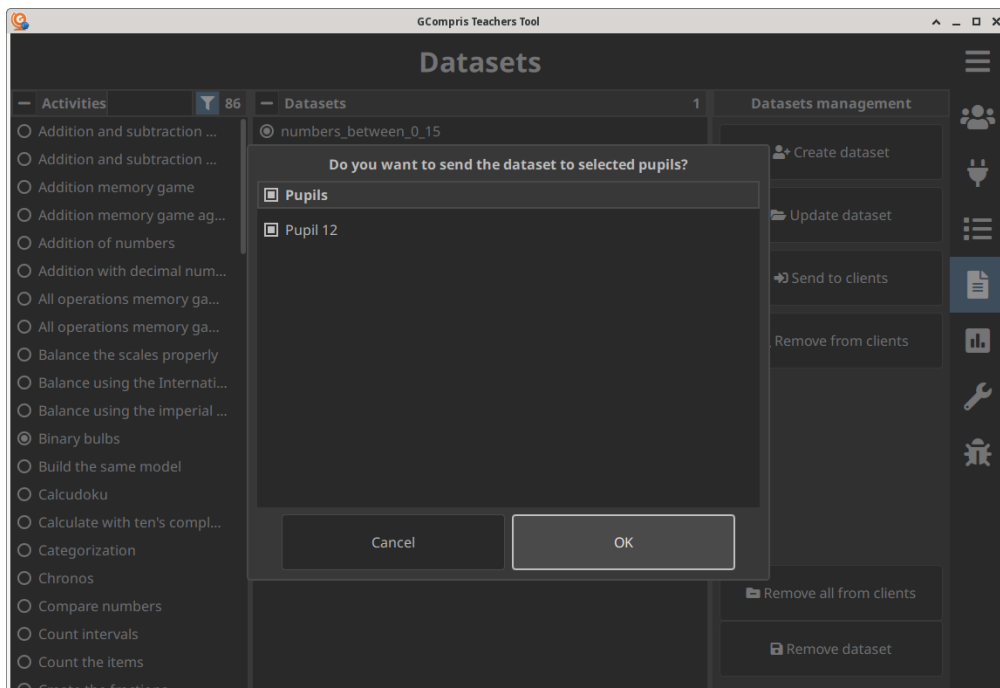
The 'Instructions' button on the bottom left is provided to give some specific information about how to fill the dataset when needed.



If you want to delete a dataset: select it, press the 'Remove dataset' button and confirm in the following dialog:



If you have clients connected, you may want to send them a specific dataset to be available on their side. Select the dataset and press the 'Send to clients' button. The list of all the connected clients will be displayed and you will be able to select which will receive it.

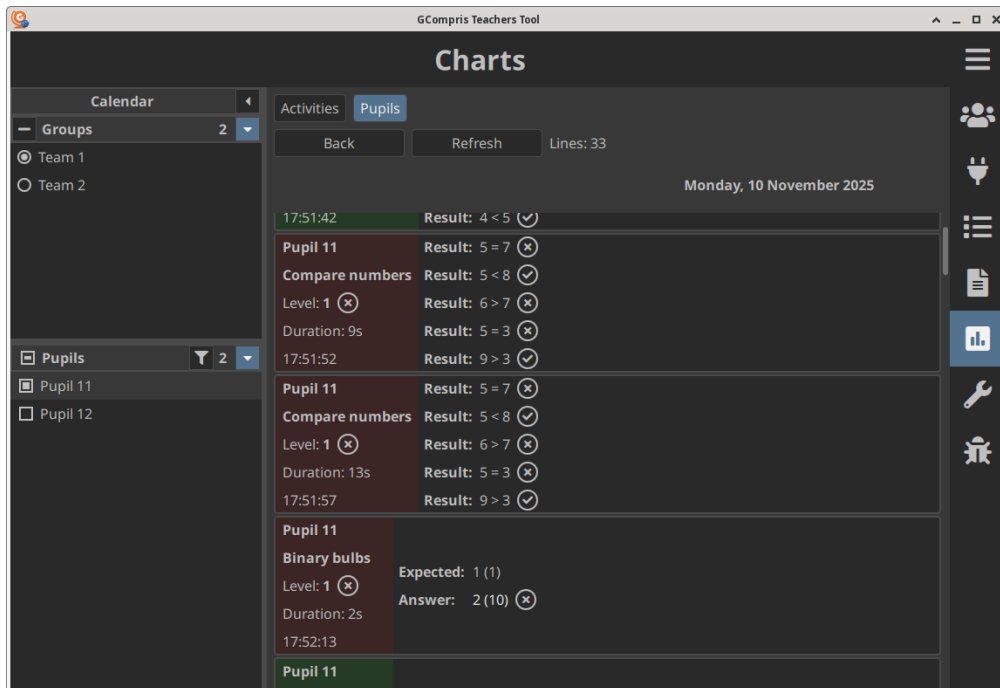


## 2.6.1 Specific activities for the server

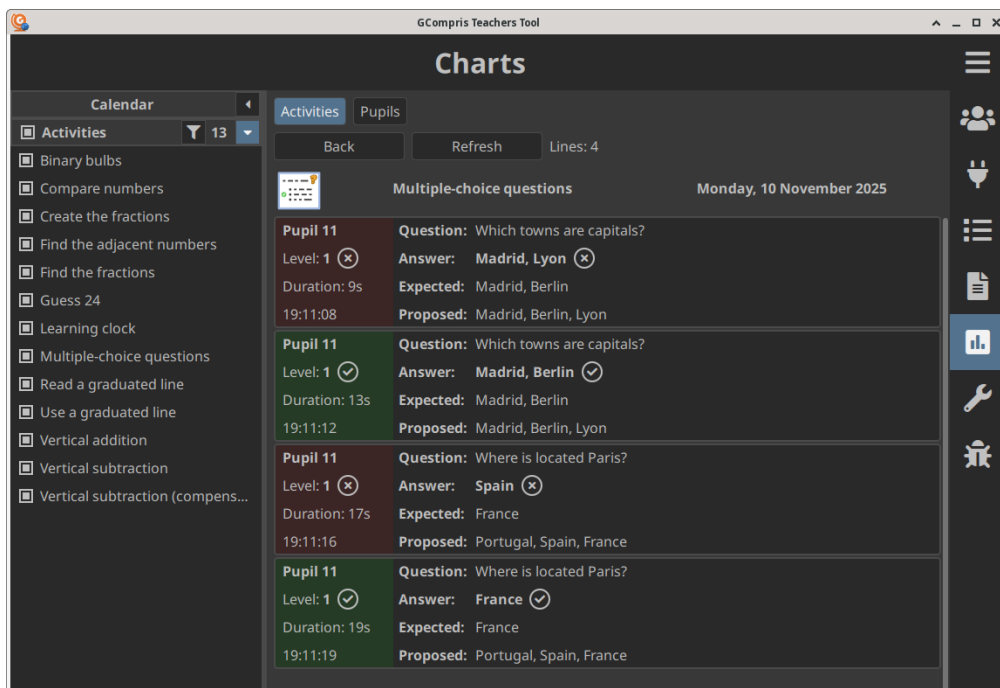
We have created the 'Multiple-choice questions' activity that is only visible when the device contains datasets for it. This activity allows teachers to create multiple-choice questionnaires on any topic.



## The GCompris Teachers Administration Handbook



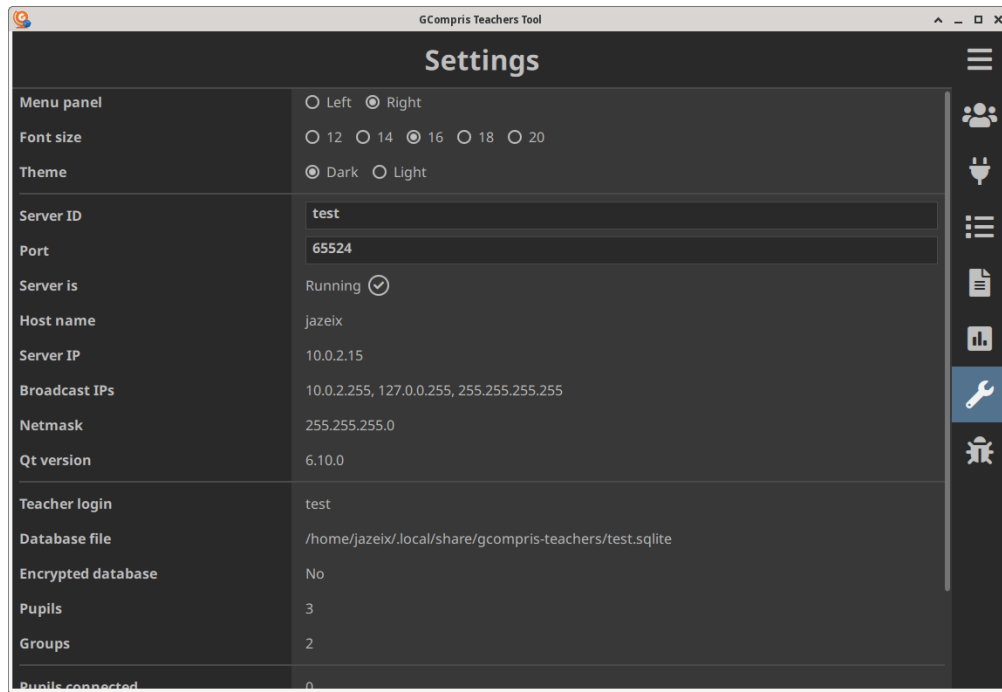
If the 'Activities' tab is selected, you can see all the results for a specific activity:



## 2.8 Settings

The settings page allows to customize the interface and get some information on the current database and session.

## The GCompris Teachers Administration Handbook



## Chapter 3

# Credits and License

GCompris Teachers

Program copyright © 2000–2026 Timothée Giet and others

This documentation is licensed under the terms of the [GNU Free Documentation License](#).

This program is licensed under the terms of the [GNU General Public License](#).