

Power Management

Dario Freddi



Power Management

Contents

1	PowerDevil, a Power Management Daemon	4
1.1	Energy Saving Settings	4
1.2	Activity Settings	5
1.3	Advanced Settings	6
2	PowerDevil Runner	6
2.1	Runner Keywords	7

1 PowerDevil, a Power Management Daemon

This module is a configuration tool for managing Power Management in Plasma. It is a configurator for the PowerDevil daemon, that you can start or stop from the **Background Services** module in System Settings.

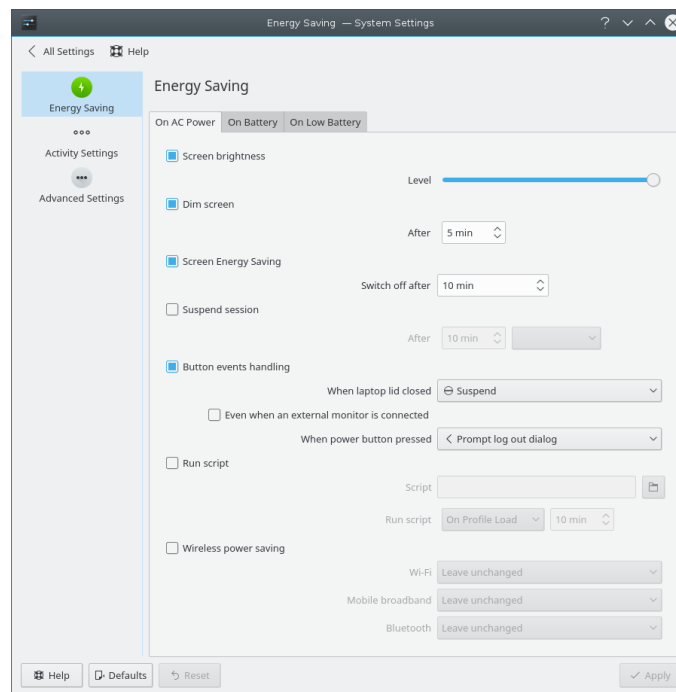
Through this module, you can define your computer's behavior in various situations, allowing you to save as much energy as possible.

Powerdevil works with Solid only and it's integrated in your desktop. You won't even notice it is running, apart from notifications. Moreover, Powerdevil checks your system capabilities first, so you'll see only options available for your system in this module.

NOTE
Note that PowerDevil does not poll your system. This means that it will not waste energy while trying to save it, as some other power managers do.

1.1 Energy Saving Settings

This page shows the actual energy saving settings. If a battery is detected you have three tabs with different settings for **On AC Power**, **On Battery** and **On Low Battery** profiles.



Energy Saving Settings

There are a lot of options you can configure for each profile:

Screen brightness

Sets the screen's brightness using a slider.

Dim screen

If checked, the display will be progressively dimmed, until reaching brightness 0, in the amount of time you specify in the spin box.

Power Management

Screen Energy Saving

Here you can set the timeout for switch off in the spin box.

Suspend session

Suspends the session after the selected time to the status **Sleep**, **Hibernate**, **Shutdown** or **Lock screen**.

Button events handling

Select actions to perform whenever the laptop lid is closed or a button is pressed.

Run Script

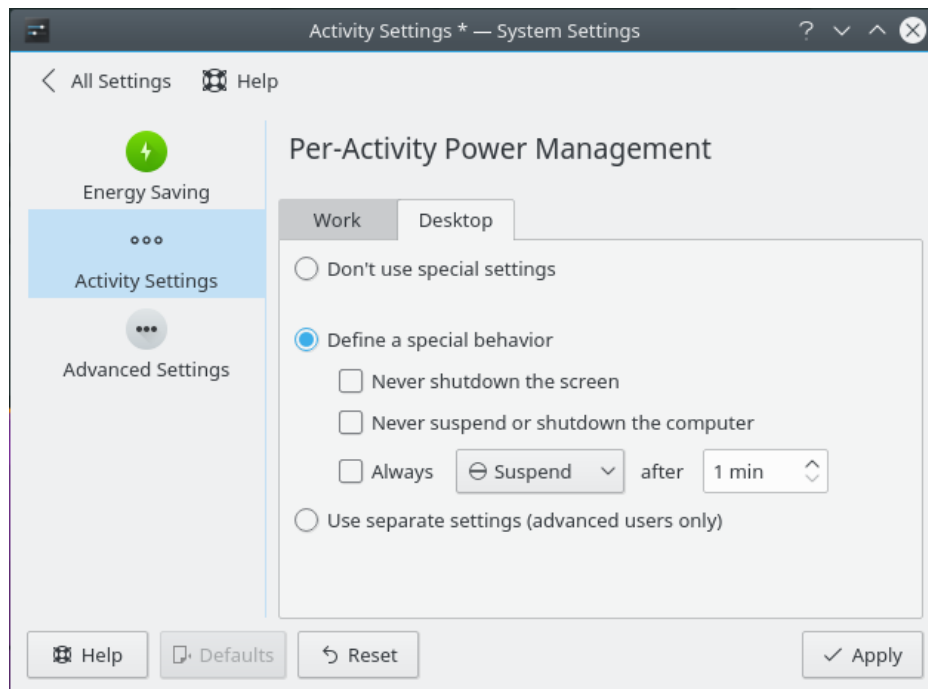
Activate this option to run a custom script when a profile is loaded, unloaded or after a given amount of time.

Wireless power saving

Activate this option to set individual actions for Wi-Fi, Mobile broadband or Bluetooth connections.

1.2 Activity Settings

Here you can configure the Power Management settings per activity. The settings for each activity can be configured on its own tab.



Activity Settings

Don't use special settings

Use the settings defined on **Energy Saving** page.

Define a special behavior

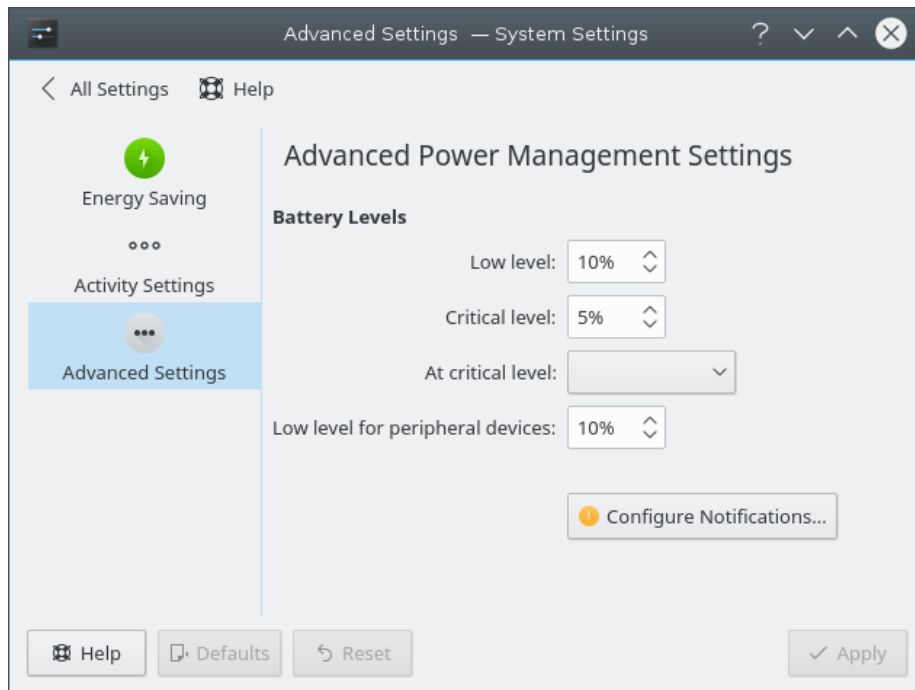
If this option is chosen, a special behavior for activity can be chosen. If this is a presentation activity, you can check the **Never shutdown the screen** and **Never shutdown the computer or let it go to sleep** boxes. It is also possible to define the time interval for the computer to switch to a suspension mode for the power saving activities.

Power Management

Use separate settings (advanced users only)

This option allows users to choose the detail power saving settings for a separate activity. The settings are similar to the settings from the [Energy Saving](#) page.

1.3 Advanced Settings



Advanced Settings

Battery levels

These items are only displayed if a battery is detected.

Low level

Here you can set the percentage after which the battery will be considered low.

Critical level

Here you can set the percentage after which the battery will be considered at critical level.

At critical level

Defines the action that will be done when battery reaches the critical level.

Peripheral devices

Defines the low level for peripheral devices e.g. a wireless mouse.

Configure Notifications

If you want a deeper control over your notifications, you can refine them by clicking this button.

2 PowerDevil Runner

PowerDevil can be manually controlled through KRunner (**Alt+F2**). This makes changing profile, brightness, governor and more much easier and faster. The runner has various keywords you can enter to access its functions

Power Management

2.1 Runner Keywords

Here comes a list of keywords you can enter in KRunner to perform PowerDevil related actions.

power profile

You can manually choose a profile using this keyword. All available profiles will be shown in form of KRunner matches.

screen brightness or dim screen

You can control screen brightness through this keyword. In this form, some KRunner matches that let you do some common actions will be shown. If you enter a value after the keyword (e.g.: **Screen Brightness 50**), the brightness will be set to that value.

suspend, sleep, hibernate, to ram or to disk

You can set your computer into a low power mode through these keywords. Available methods will be shown as KRunner matches.