

Fonts

Mike McBride
Anne-Marie Mahfouf



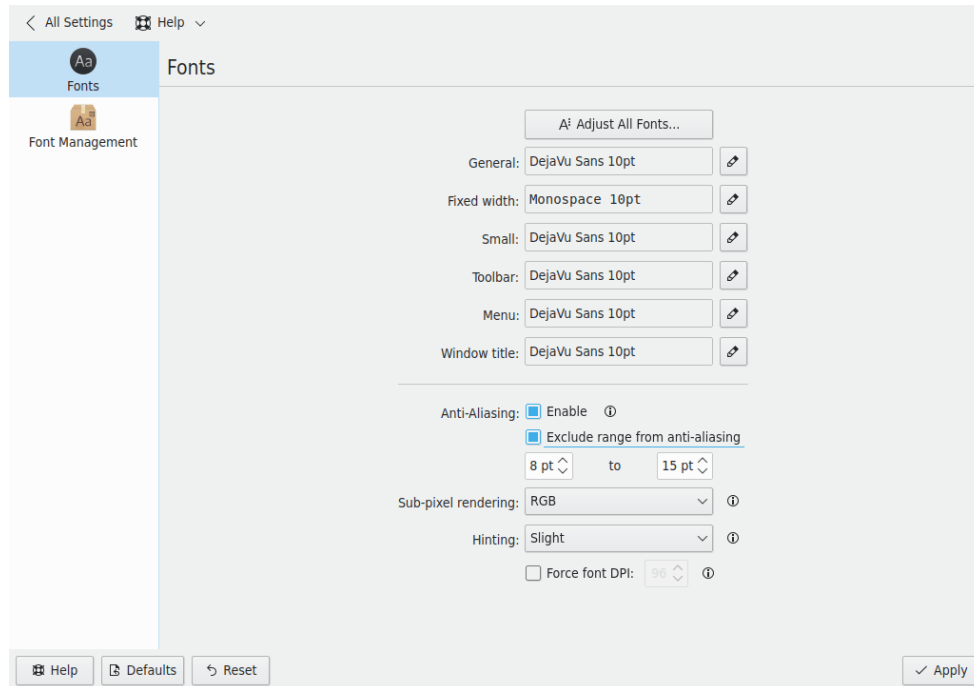
Fonts

Contents

1	Fonts	4
1.1	Anti-aliasing text	5
1.2	Fonts DPI	5

1 Fonts

This module is designed to allow you to easily select different fonts for different parts of the KDE Desktop.



The panel consists of different font groups to give you a lot of flexibility in configuring your fonts:

- **General:** Used everywhere when the other font groups do not apply
- **Fixed width:** Anywhere a non-proportional font is specified
- **Small:** When small fonts are used
- **Toolbar:** Font used in KDE application toolbars
- **Menu:** Font used in KDE application menus
- **Window title:** Font used in the window title
- **Taskbar:** Font used in the taskbar panel applet
- **Desktop:** Font used on the desktop to label icons

Each font has a corresponding **Choose...** button. By clicking on this button, a dialog box appears. You can use this dialog box to choose a new font, a font style and size. Then press **OK**.

Check the **Show only monospaced fonts** to filter out all non-monospaced fonts from the list.

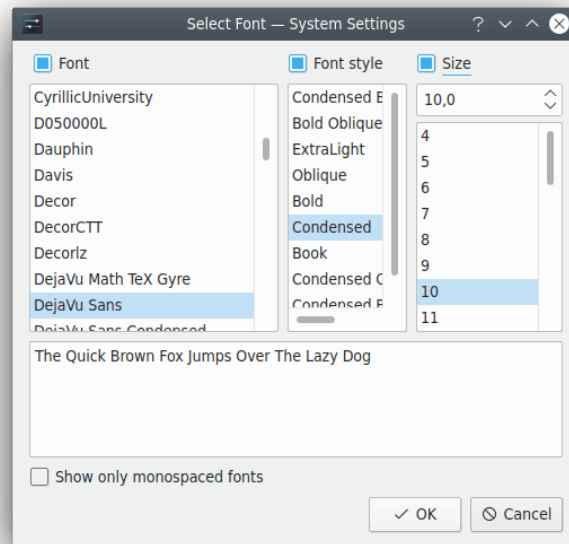
An example of the font you have chosen will be displayed in the space between the font group name and the **Choose...** button.

When you are done, simply click **OK** and all the necessary components of KDE will be restarted so your changes can take affect immediately.

The **Adjust All Fonts...** button allows you to quickly set properties for all the fonts selected above. A font selection dialog similar to the standard one will appear, but you will notice checkboxes that allow you to change the **Font**, **Font style** or **Size** independently of each other. You can choose any one, two, or three of these options, and they will be applied to all the font groups.

Fonts

Check the **Show only monospaced fonts** to filter out all non-monospaced fonts from the list.



For example, if you have selected several different font faces above, and realize they are all a size too big (this often happens when you change screen resolution, for instance), you can apply a new font size to all the fonts, without affecting your customized font faces and styles.

1.1 Anti-aliasing text

To use anti-aliasing setting, simply check the **Enabled** item and select the custom settings.

Placing a mark in the **Exclude range from anti-aliasing** checkbox will allow you to specify which range of fonts will *not* be anti-aliased. This range is specified with the two combo boxes below.

You can also choose the method used to create an anti-alias look to your fonts, and how strongly it should be applied changing the **Sub-pixel rendering** and **font hinting**. It is also possible to **Force font DPI** for the **screen rendering**. If you are not familiar with the individual methods, you should leave these options alone.

NOTE

The ability to use anti-aliased fonts and icons requires that you have support in both the display server and the Qt™ toolkit, that you have suitable fonts installed, and that you are using the built-in font serving capabilities of the display server. If you still are having problems, please contact the appropriate KDE mailing list.

1.2 Fonts DPI

Force fonts DPI: proposes you an alternate DPI other than your system one which is used as default when this setting is on **Disabled**. You can check what DPI your X server is set to by running `xdpypinfo | grep resolution` in a terminal window and then change the DPI using the drop down box. This will be applied to newly started applications only.