

# The Sieve Editor Handbook

Laurent Montel



## The Sieve Editor Handbook

# Contents

<b>1</b>	<b>Introduction</b>	<b>5</b>
1.1	Using Sieve Editor . . . . .	5
1.1.1	First Start . . . . .	5
1.1.2	Script Editing . . . . .	6
1.1.3	Script Tools . . . . .	7
1.1.4	Integrated Help . . . . .	7
<b>2</b>	<b>Credits and License</b>	<b>8</b>

### **Abstract**

Sieve Editor is an editor for Sieve scripts used for email filtering on a mail server.

# Chapter 1

## Introduction

Sieve Editor is an editor for [Sieve](#) scripts used for email filtering on a mail server.

### 1.1 Using Sieve Editor

Sieve Editor provides a GUI to perform these tasks:

- Manage your Sieve servers
- Upload, import and deactivate scripts, refresh the list with scripts
- Create and edit Sieve scripts
- Import and share scripts
- Check the script syntax, autogenerate and debug scripts

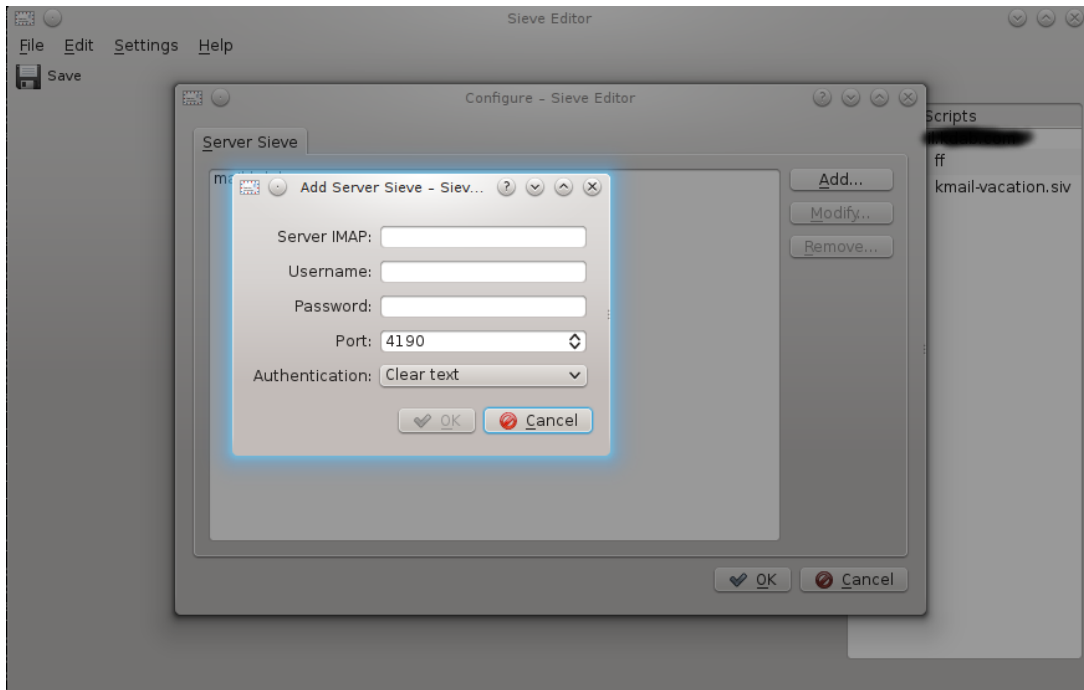
Sieve Editor can be used independent from Akonadi or KMail, you only need a mail server with support for Sieve scripts.

In a KDE Plasma Desktop the passwords are stored in KWallet

#### 1.1.1 First Start

At the first start of Sieve Editor the server configuration dialog is displayed.

## The Sieve Editor Handbook



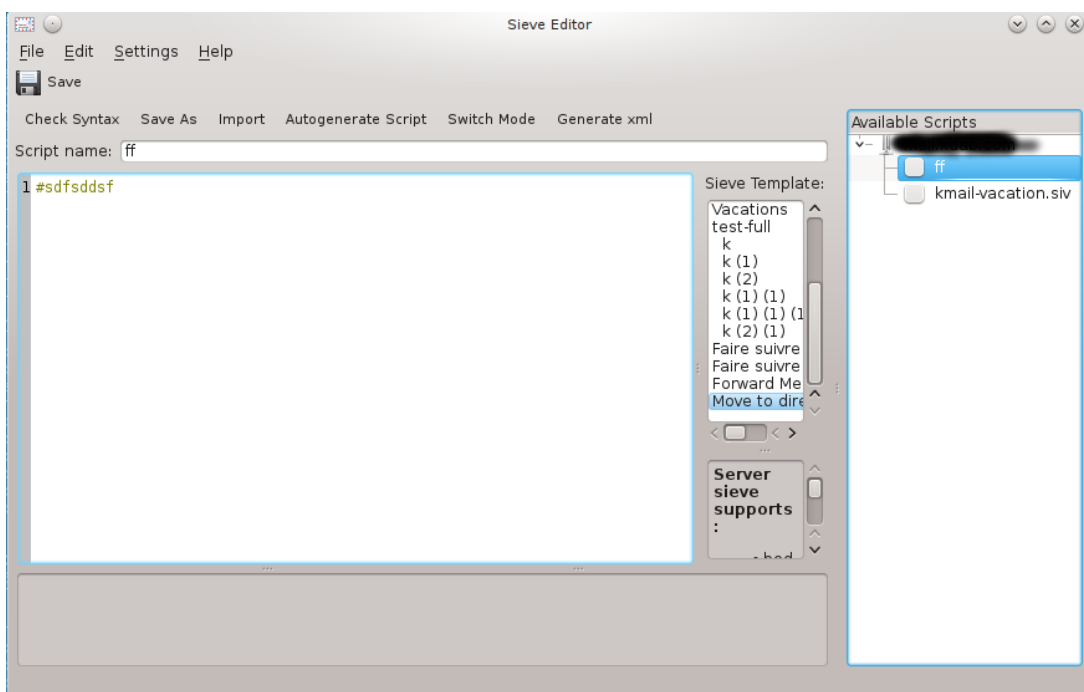
In this dialog you can add, modify and remove your mails servers.

Later you can use **File** → **Add Server** or the configuration dialog for these tasks.

On the next start Sieve Editor automatically fetches all available scripts from the servers.

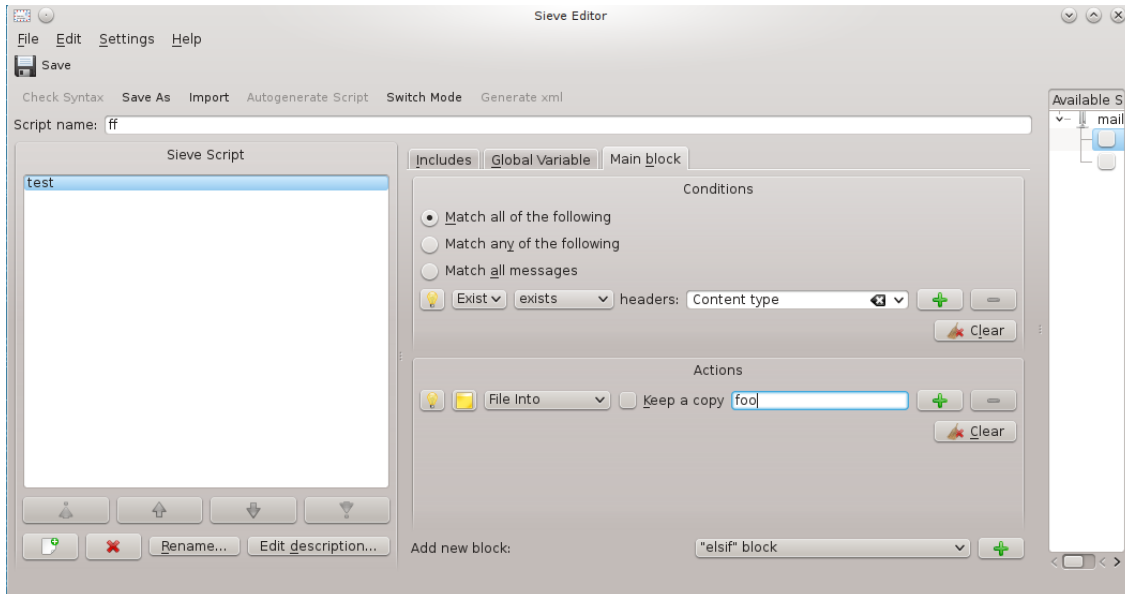
### 1.1.2 Script Editing

The editor supports autocompletion and syntax highlighting.



### 1.1.3 Script Tools

The actions in the **Tools** menu enable you to check the syntax of your scripts, autogenerate and debug scripts.



### 1.1.4 Integrated Help

You can use the integrated help support and click with the right mouse button on a keyword of the Sieve language. Then the corresponding section of the documentation is downloaded from the Internet and displayed in the **Help** tab.



## Chapter 2

# Credits and License

Sieve Editor

Program copyright 2013-2017 Laurent Montel [montel@kde.org](mailto:montel@kde.org)

Documentation Copyright (c) Laurent Montel [montel@kde.org](mailto:montel@kde.org)

This documentation is licensed under the terms of the [GNU Free Documentation License](#).

This program is licensed under the terms of the [GNU General Public License](#).