

The Sieve Editor Handbook

Laurent Montel



The Sieve Editor Handbook

Contents

1	Introduction	5
1.1	Using Sieve Editor	5
1.1.1	First Start	5
1.1.2	Script Editing	6
1.1.3	Script Tools	7
1.1.4	Integrated Help	7
2	Credits and License	8

Abstract

Sieve Editor is an editor for Sieve scripts used for email filtering on a mail server.

Chapter 1

Introduction

Sieve Editor is an editor for [Sieve](#) scripts used for email filtering on a mail server.

1.1 Using Sieve Editor

Sieve Editor provides a GUI to perform these tasks:

- Manage your Sieve servers
- Upload, import and deactivate scripts, refresh the list with scripts
- Create and edit Sieve scripts
- Import and share scripts
- Check the script syntax, autogenerate and debug scripts

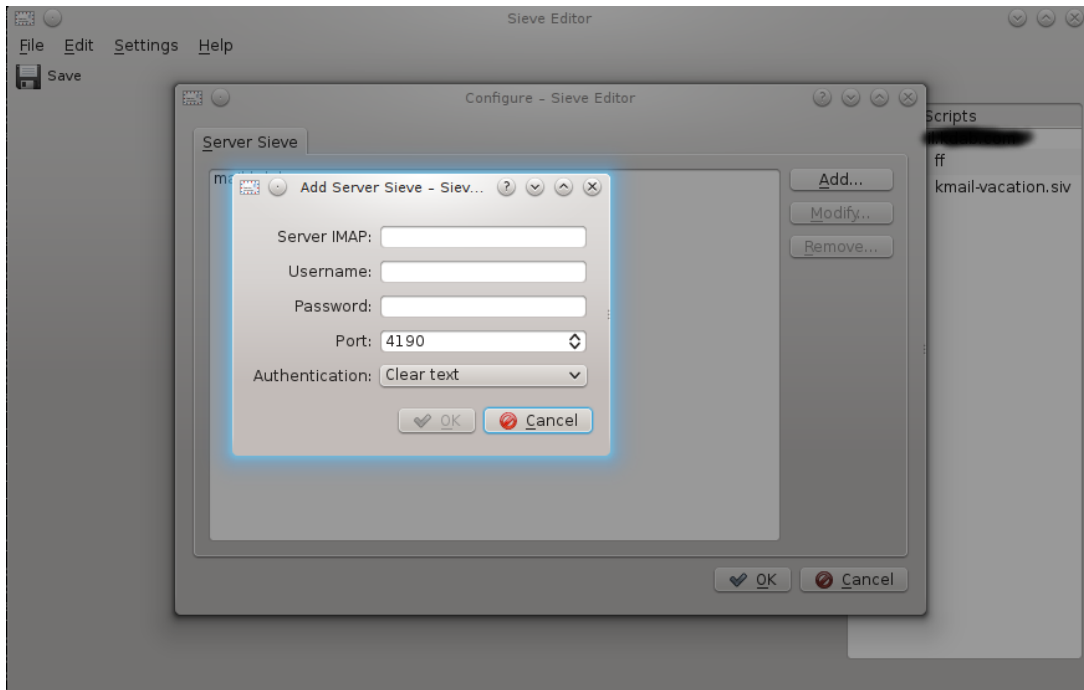
Sieve Editor can be used independent from Akonadi or KMail, you only need a mail server with support for Sieve scripts.

In a KDE Plasma Desktop the passwords are stored in KWallet

1.1.1 First Start

At the first start of Sieve Editor the server configuration dialog is displayed.

The Sieve Editor Handbook



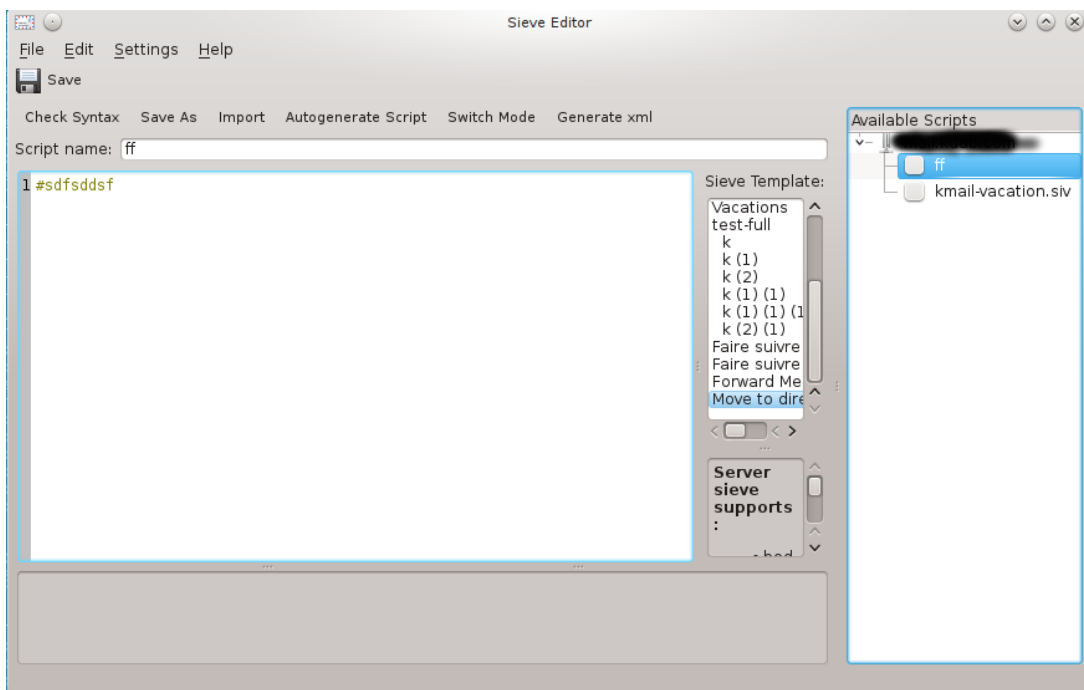
In this dialog you can add, modify and remove your mails servers.

Later you can use **File** → **Add Server** or the configuration dialog for these tasks.

On the next start Sieve Editor automatically fetches all available scripts from the servers.

1.1.2 Script Editing

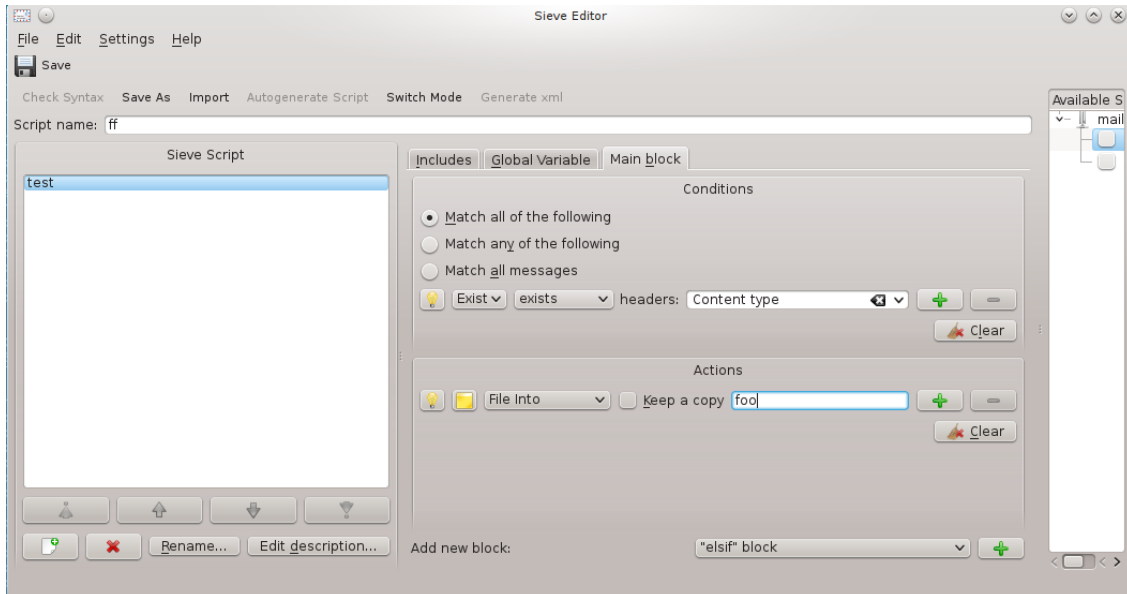
The editor supports autocompletion and syntax highlighting.



The Sieve Editor Handbook

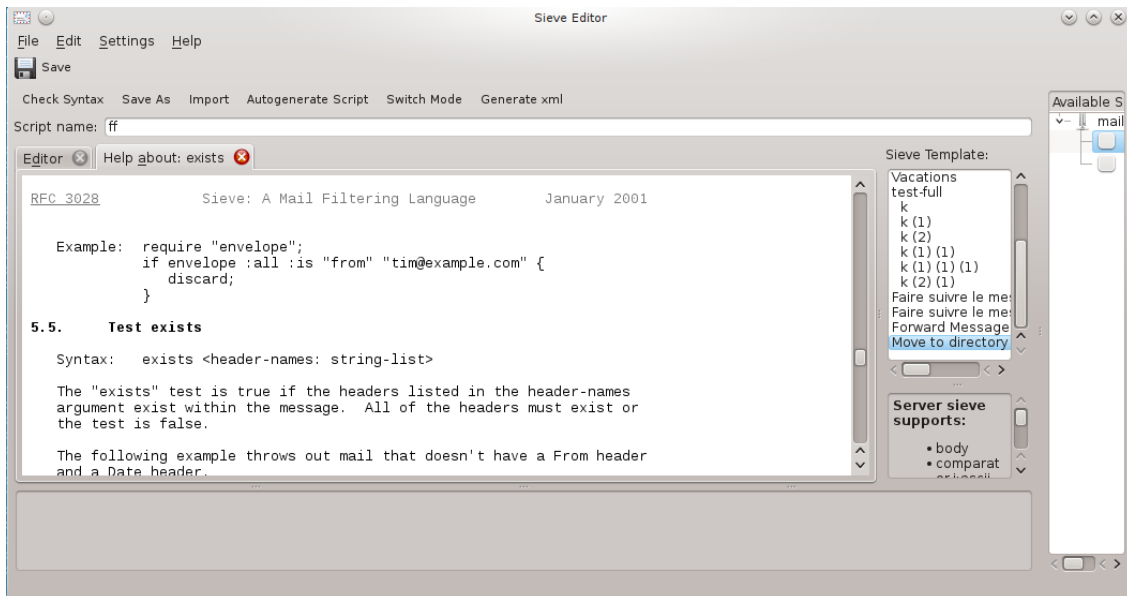
1.1.3 Script Tools

The actions in the **Tools** menu enable you to check the syntax of your scripts, autogenerate and debug scripts.



1.1.4 Integrated Help

You can use the integrated help support and click with the right mouse button on a keyword of the Sieve language. Then the corresponding section of the documentation is downloaded from the Internet and displayed in the **Help** tab.



Chapter 2

Credits and License

Sieve Editor

Program copyright 2013-2017 Laurent Montel montel@kde.org

Documentation Copyright (c) Laurent Montel montel@kde.org

This documentation is licensed under the terms of the [GNU Free Documentation License](#).

This program is licensed under the terms of the [GNU General Public License](#).