

# Custom Shortcuts

Subhashish Pradhan  
T.C. Hollingsworth



## Custom Shortcuts

## Contents

<b>1</b>	<b>Introduction</b>	<b>4</b>
<b>2</b>	<b>Managing Shortcuts and Groups</b>	<b>4</b>
2.1	Adding Groups . . . . .	4
2.2	Adding Shortcuts . . . . .	4
2.3	Deleting Shortcuts and Groups . . . . .	5
2.4	Exporting Groups . . . . .	5
2.5	Importing Groups . . . . .	6
<b>3</b>	<b>Modifying Groups</b>	<b>6</b>
<b>4</b>	<b>Modifying Shortcuts</b>	<b>7</b>
4.1	The Comment Tab . . . . .	7
4.2	The Trigger Tab . . . . .	8
4.3	The Action Tab . . . . .	9
<b>5</b>	<b>Defining Windows</b>	<b>12</b>
<b>6</b>	<b>Settings</b>	<b>13</b>
<b>7</b>	<b>Credits and License</b>	<b>14</b>

## 1 Introduction

The Custom Shortcuts System Settings module allows you to configure custom keyboard shortcuts and mouse gestures. You can use them to control applications, run specific commands, and more.

## 2 Managing Shortcuts and Groups

### 2.1 Adding Groups

The module allows you to sort related shortcuts into Groups. For instance, if you have some shortcuts that relate to your music player, you could create a group for them called *Music Player*.

To add a new group, click on the **Edit** button below the left pane and select the **New Group** option.

### 2.2 Adding Shortcuts

To add a new shortcut, click on the **Edit** button below the left pane and select the **New** option.

The first menu that appears allows you to select the type of trigger. The following options are available:

#### Global Shortcut

These are standard keyboard shortcuts that will be recognized anywhere, as long as a KDE Plasma Workspace is running.

#### Window Action

Window Actions are triggers that occur when something happens to a particular window, like when it appears, gains focus, or is closed.

#### Mouse Gesture Action

A mouse gesture action is triggered when a particular movement of the mouse (or touchpad or touchscreen) is performed.

Once you've selected the type of trigger, another submenu appears that allows you to select an action type. The following types are available:

#### Command/URL

This action will launch a command or open a URL when the shortcut is triggered.

#### D-Bus Command

This action will call a D-Bus method in a running application or system daemon. For more information, see the [Introduction to D-Bus on KDE developer platform](#).

#### Send Keyboard Input

This action will send keyboard input to the currently running application, just as if you had typed it in yourself.

Once you've selected the action type, you can then edit the shortcut to your liking. See Section 4 for more information.

## 2.3 Deleting Shortcuts and Groups

To delete a shortcut or group, select it, then click on the **Edit** button below the left pane, and select the **Delete** option.

## 2.4 Exporting Groups

You can export a group, so you can save the shortcuts contained within and use them on another computer or maintain a backup.

To export a group, select the group to be exported, then click on the **Edit** button below the left pane and select the **Export Group...** option, which opens a new window that lets you define some options about the exported group. The following options are available:

### Export Actions

This allows you to select the state the shortcuts will be in when they are imported later. Select **Actual State** to maintain their current state, **Enabled** to ensure they are all enabled, or **Disabled** to ensure they are all disabled.


### Id

Here you may enter text to identify the group. If the group is included by default, this text may be filled in by default.

### Allow Merging

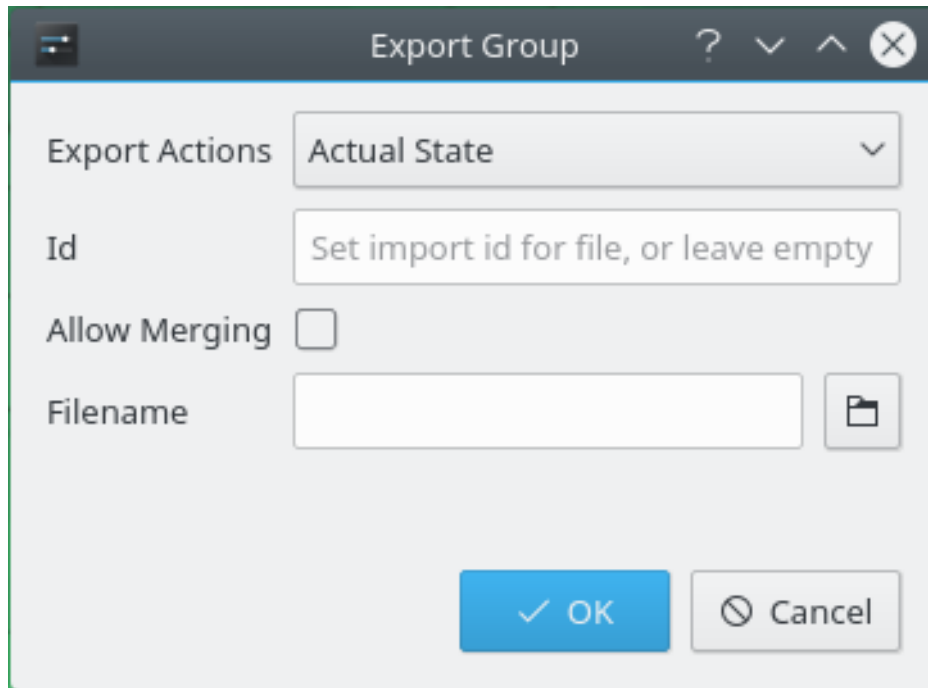
This defines what happens if the group already exists on the system the exported group is imported to. When enabled, any new actions will be added to the group on the target system, while actions that have the same name but a different configuration will be updated with the configuration from the imported file. When disabled, the module will refuse to import the file.

### Filename

Here you may enter the filename you wish to export the shortcut to. You may also select the  button to the right of the text box to open the File dialog and select a file from there.

**TIP**  
Exported files use the extension `.khotkeys` by default.

## Custom Shortcuts



*Exporting a group of shortcuts.*

### 2.5 Importing Groups

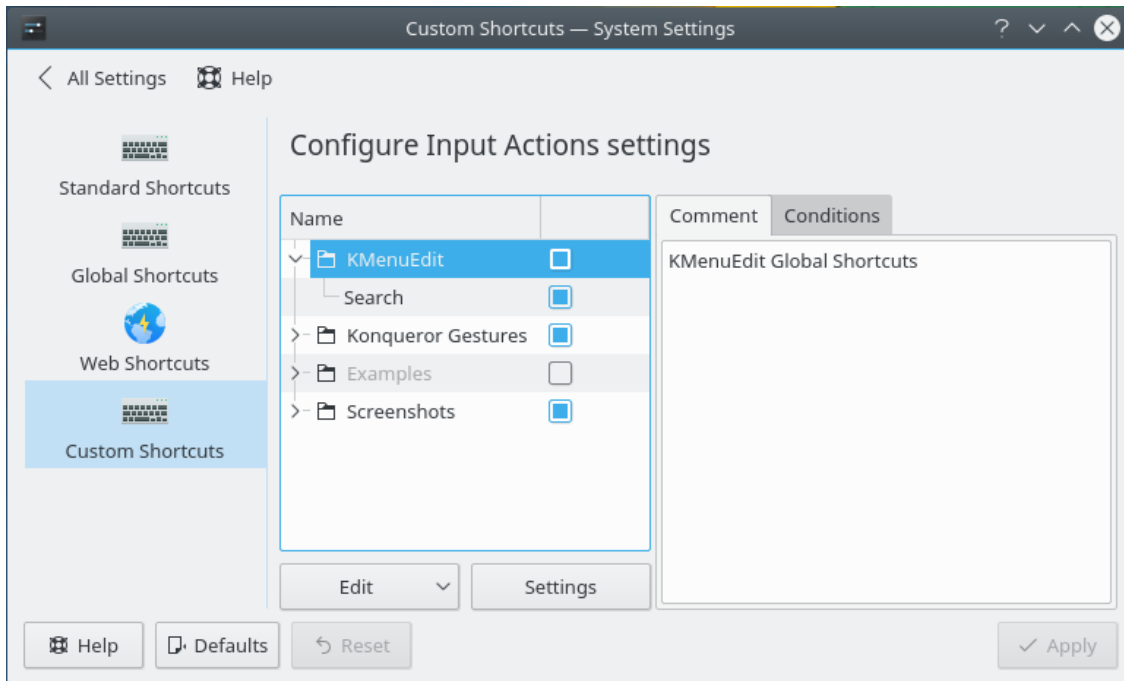
To import a group, click the **Edit** button below the left pane and select **Import...** A file selection dialog opens that permits you to locate a file previously created using the Export function.

## 3 Modifying Groups

In the left section of the window, the default shortcuts are categorized into groups. These groups can be expanded by clicking the arrow beside them to reveal the shortcuts.

When you click on a group, you are presented with two tabs to configure the group itself. The **Comment** allows you to store notes about the group, and are not actually used by the system for anything. The **Conditions** tab allows you to restrict which windows a group of shortcuts works with.

## Custom Shortcuts



### *Modifying a group's comment.*

Conditions are displayed in a tree, the top level of which is **And**. All conditions beneath **And** must be satisfied for shortcuts in the group to be triggered.

You may add additional groups of conditions by clicking the **New** drop down box to the right of the tree of conditions. Types of groups include the aforementioned **And**, **Or**, in which only one member of the group must be satisfied, or **Not**, in which the inverse of all members will trigger the shortcuts in the group.

To add a window definition to the list, press the **New** button. You may select **Active Window...** if you want the shortcut to be triggered only if the specified window currently has focus, or you may select **Existing Window...** if you want the shortcut to be triggered as long as that window is open, regardless of whether or not you are using it. Selecting either of these options opens a window where you can edit the window definitions.

Click the **Edit...** button to edit an existing set of window definitions. A window opens with the window definition editor. For more information, see Section 5.

To remove a window definition from the conditions list, click the **Delete** button.

## 4 Modifying Shortcuts

In the left section of the window, the default shortcuts are categorized into groups. These groups can be expanded by clicking the arrow beside them to reveal the shortcuts.

By default the groups **KMenuEdit**, **Konqueror Gestures** and **Examples** are installed. Applications can provide additional shortcuts, e.g. Spectacle adds a group **Screenshots**. This group, when expanded, reveals several shortcut configurations like **Start Screenshot Tool** which, when selected, reveals section on the right side, with three tabs:

### 4.1 The Comment Tab

The **Comment** tab allows you to describe how to use the shortcut, what it does, or anything else you might want to include.

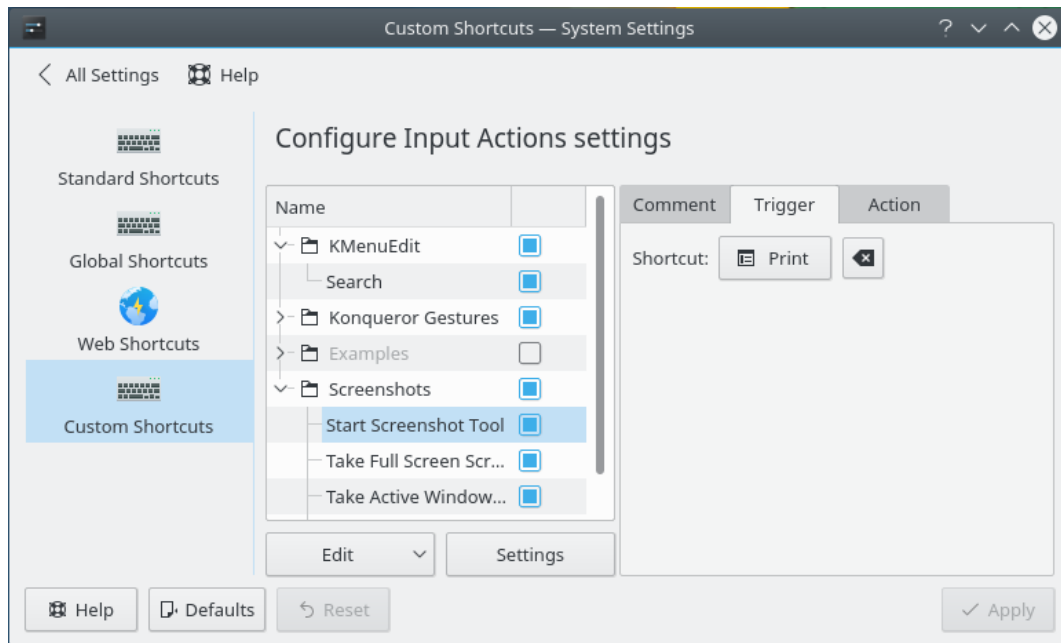
## 4.2 The Trigger Tab

The **Trigger** tab contains the trigger configuration, which depends on the type of trigger specified:

### Global Shortcut

To modify a keyboard shortcut, click on the button that contains a wrench, and then enter

the desired keyboard shortcut. To erase the shortcut, click on the button with the icon to the right of the change shortcut button.



*Modifying a trigger for a keyboard shortcut.*

### Window Action

Window actions contain several options:

#### Trigger When

This configures the particular window action that must occur for the shortcut to be triggered. The following options are available:

- **Window appears** - Triggered when a window is opened.
- **Window disappears** - Triggered when a window is closed.
- **Window gets focus** - Triggered when you switch to a window.
- **Window loses focus** - Triggered when you switch away from a window.

#### Window

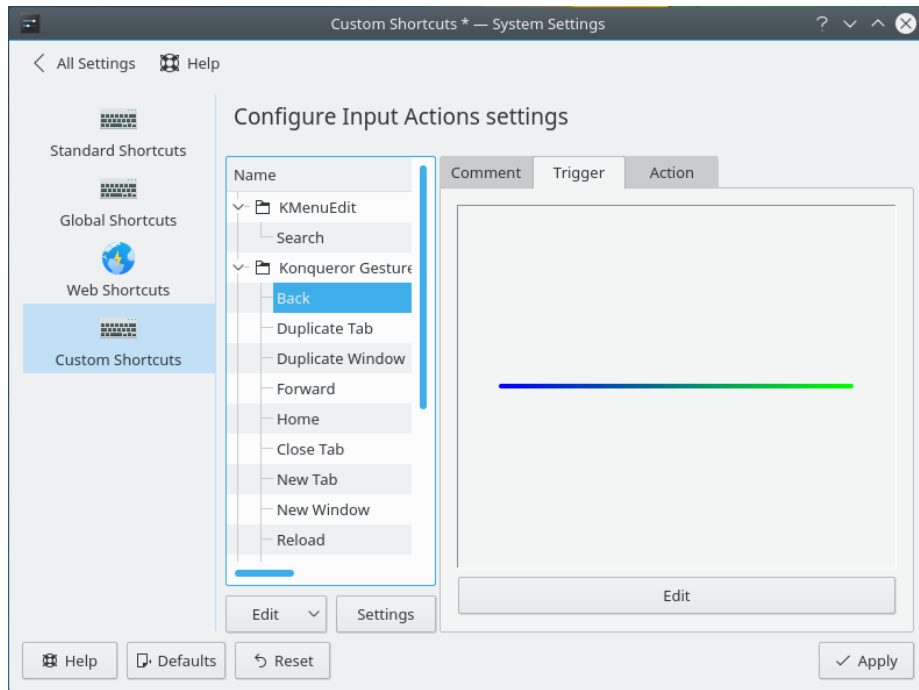
This is where you define the actual window or windows the trigger applies to. For more information, see Section 5

### Mouse Gesture

A mouse gesture can be changed by clicking the **Edit** button below the area that displays the mouse gesture, which will open a window. Hold down the left mouse button and draw the desired mouse gesture in the area provided. The gesture will be saved when you release the left mouse button.



## Custom Shortcuts



*Modifying a trigger for a mouse gesture.*

### 4.3 The Action Tab

The **Action** tab is where you configure the action that will be performed when the shortcut is triggered. There are several types of actions that have different configuration options:

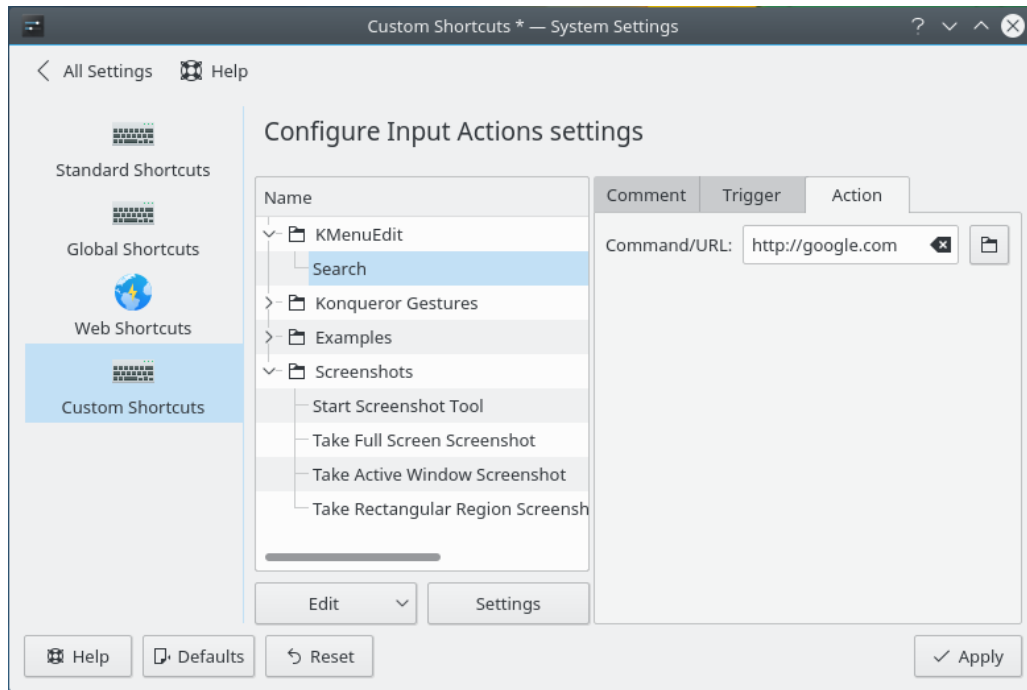
#### Command/URL

When using a Command or URL as a trigger, a text box is provided where you may enter the command to run or URL to open when the shortcut is triggered. You may also click the



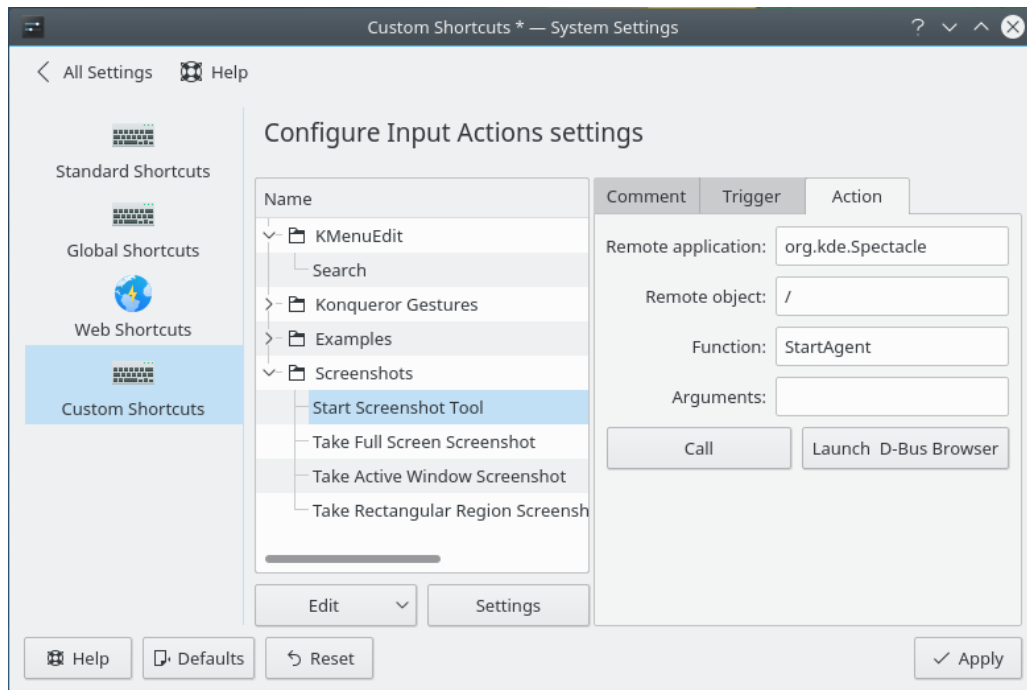
button to the right of the text box to open a file selection dialog in which you can select a file on your local or a remote system.

## Custom Shortcuts



*Modifying a command action.*

## D-Bus Command



*Modifying a D-Bus action.*

The following options are provided that allow you to specify a D-Bus method to be performed:

### **Remote application:**

The service name of the remote application the method is to be performed on, for

## Custom Shortcuts

instance `org.kde.spectacle` if you wanted to perform it on the Spectacle screenshots utility.

### Remote object:

The path to the remote object the method is to be performed on, for instance `/` for screenshot actions using Spectacle or `/Document/1`, if you wanted to perform it on the first document opened in Kate.

### Function:

The name of the D-Bus method to be called, for instance `Fullscreen` if you wanted to take a fullscreen screenshot or `print` if you wanted to print the document.

### Arguments:

Enter additional arguments for the D-Bus method to be called.

### Call

Use this button to verify that the action works as expected.

### Launch D-Bus Browser

Launch the application QDBusViewer so browse the D-Bus methods and arguments for a running application.

For more information, see the [Introduction to D-Bus on KDE developer platform](#).

## Send Keyboard Input

At the top of the **Action** tab, there is a large text entry where you may enter the keystrokes you wish to be sent when the shortcut is triggered.

Most keys contain a single character, and to enter them here you just enter that character. For instance, to type an 'A', just enter **A**. Some keys have longer names, and you can also use those names. For instance, to press the **Alt** key, simply enter **Alt**.

Individual keystrokes should be separated by a colon (:). For instance, to type 'foo', enter **F:O:O**.

Keys that need to be pressed at the same time should be separated by a plus sign. For instance, to press **Ctrl+C**, enter **Ctrl+C**.

### TIP

Remember, you must enter keystrokes here exactly as you would on a keyboard. To capitalize letters, you must enter the **Shift** key. For instance, to type 'Hello', enter **Shift+H:E:L:L:O**. This also applies to special characters. For instance, to type the at-sign on the U.S. English keyboard layout, enter **Shift+2**.

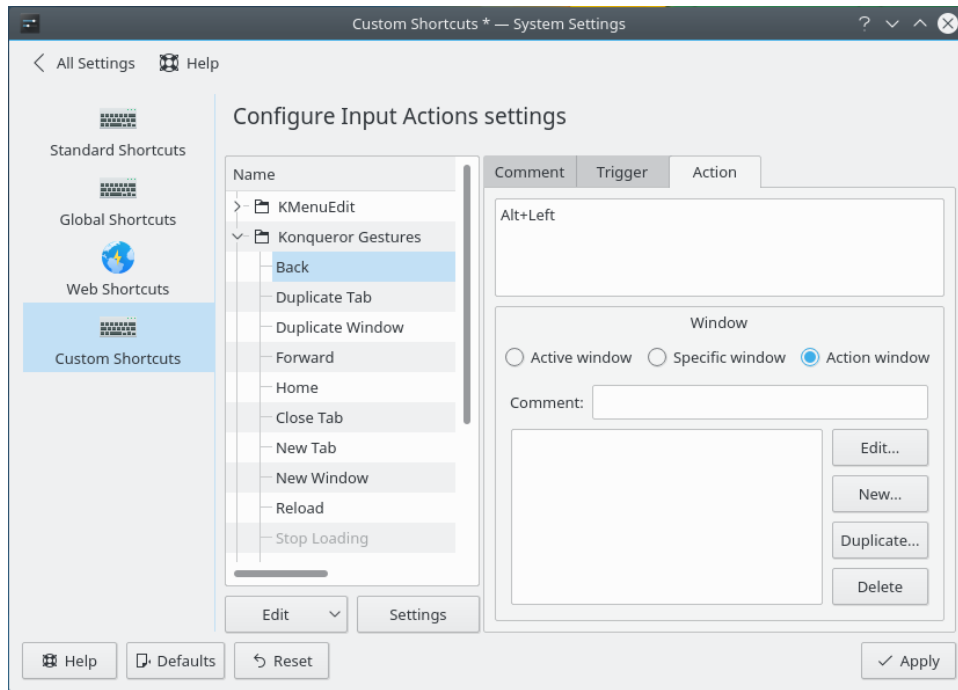
### WARNING

The action that is performed is dependent on the currently selected keyboard layout. If you change keyboard layouts and trigger a shortcut, it may have undesired consequences.

Beneath the keystroke entry text box, you may select which window the keystrokes will be directed to. You may choose from the following options:

- **Active window** - The window that is currently open.
- **Specific window** - The window that you describe using the form below. For more information on describing windows, see Section 5.
- **Action window** - When using the Window Actions trigger type, enter the keystrokes in the window that triggered the shortcut.

## Custom Shortcuts



*Modifying the keyboard input action for a shortcut.*

## 5 Defining Windows

Several areas of the module allow you to define a list of windows. They all use the same interface, which contains the following options:

### Comment:

This is merely an informational text box you can use to explain what the trigger applies to or save other useful information. It is not actually used by the system for anything.

### Window List

Beneath the **Comment** box on the left is the list of all window definitions currently present in the trigger. Simply click on one to perform an operation on it.

### Edit...

Press this button to modify the currently selected window definition. A new window is opened that allows you to edit it. This window contains the following options:

### Window Data

This is where you describe the window the trigger should apply to.

At the top, there is a **Comment** field, which is informational just like the one in the main **Trigger** tab.

Three window characteristics are available:

- **Window title:** - The title that appears at the top of the window.
- **Window class:** - Usually the name of the application.
- **Window role:** - Usually the name of the Qt™ class that makes up the window.

Each window characteristic provides a drop-down box, and a text box below it. Enter the value you wish to test windows for in the text box. From the drop-down box, select which kind of test you wish to apply. You can use **Is** to require an exact

## Custom Shortcuts

match, **Contains** to require that the text entered be somewhere inside the full value, or **Matches Regular Expression** to use a regular expression to define the match. You may also perform the inverse of all these operations. Select **Is Not Important** if you do not wish for that particular characteristic to be examined.

The easiest way to fill in this information is to open the desired window, then click the **Autodetect** button at the bottom of this section, and finally click on the desired trigger window. All three window characteristics will be populated with the information from that window, and you can then adjust the settings as necessary.

### Window Types

This lets you restrict the match to a particular type of window. The following options are available:

- **Normal** - A regular application window.
- **Desktop** - The main desktop is actually a special window all its own.
- **Dialog** - A small window that is part of a normal application, such as a message box or a configuration screen.
- **Dock** - A small window that can be attached or detached from a main application window.

### New...

Create a new window definition. This opens the edit dialog described above.

### Duplicate...

This creates a new window definition with the exact same specifications as the currently selected window definition. It will open the edit dialog described above so you may make further changes.

### Delete

Removes the currently selected window definition.

## 6 Settings

When you first enter the module, or when you click the **Settings** button below the left pane, there will be several configuration options in the right pane:

### Start the Input Actions daemon on login

This configures whether or not to activate the background application that monitors for keyboard shortcuts and triggers configured actions. It is enabled by default.

### Gestures

Select this check box to enable mouse gestures.

There are two options specific to mouse gestures:

#### Timeout:

This specifies the maximum time interval during which the mouse gesture will be monitored and recognized by the system, in milliseconds.

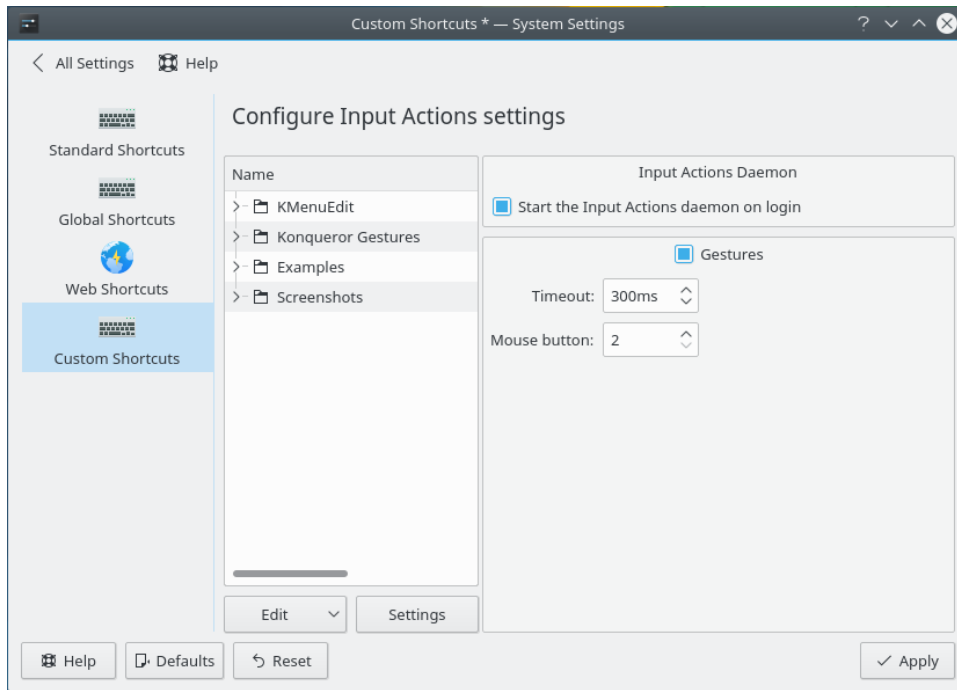
#### Mouse button:

This specifies the mouse button to be used for mouse gestures. Usually, **1** is the left mouse button, **2** is the right mouse button, and **3** is the middle or wheel button. If your mouse has more buttons, you can also use those instead.

#### NOTE

Button 1 is unavailable, so mouse gestures do not interfere with the normal operation of your system.

## Custom Shortcuts



*Editing Custom Shortcuts settings.*

## 7 Credits and License

Special thanks to Google Code-In 2011 participant Subhashish Pradhan for writing much of this article.

This documentation is licensed under the terms of the [GNU Free Documentation License](#).

This program is licensed under the terms of the [GNU General Public License](#).