

The KSnapshot Handbook

Richard J. Moore

Robert L. McCormick

Brad Hards

Reviewer: Lauri Watts

Developer: Richard J Moore

Developer: Matthias Ettrich



The KSnapshot Handbook

Contents

1	Introduction	5
2	Using KSnapshot	6
2.1	Starting KSnapshot	6
2.2	Taking A Snapshot	7
2.3	Additional Features	8
2.3.1	Snapshot Delay	8
2.3.2	Exclude Window decorations	8
2.3.3	Include mouse pointer	8
2.3.4	Buttons	8
2.3.5	Drag and Drop	9
3	D-Bus Interface	10
4	Credits and License	11

Abstract

KSnapshot is a simple application for taking screenshots. It is capable of capturing images of the whole desktop, a single window, a section of a window, a selected rectangular region or a freehand region. The images can then be saved in a variety of formats.

Chapter 1

Introduction

KSnapshot is a simple application for taking screenshots. It is capable of capturing images of the whole desktop, a single window, a section of a window, a selected rectangular region or a freehand region. The images can then be saved in a variety of formats.

Please report any problems or feature requests to the [KDE Bug Tracking System](#).

Chapter 2

Using KSnapshot

This chapter describes the use of KSnapshot for capturing screen images.

2.1 Starting KSnapshot

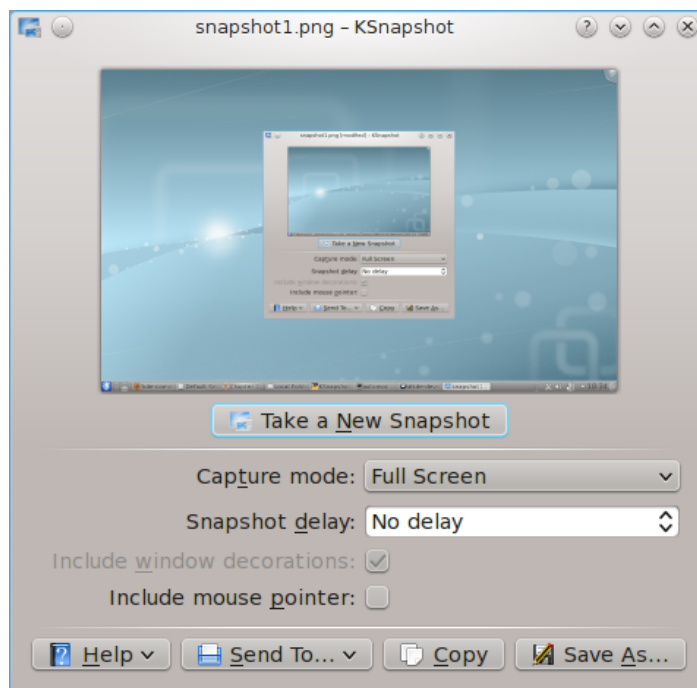
KSnapshot may be started by one of several ways as described below.

- You may start KSnapshot by selecting it from the application launcher menu **Applications** → **Graphics** → **Screen Capture Program KSnapshot**.
- You may start KSnapshot by entering the following at the command prompt:

```
% ksnapshot &
```

- The mini command line KRunner (invoked with **Alt+F2**) may also be used to start KSnapshot.

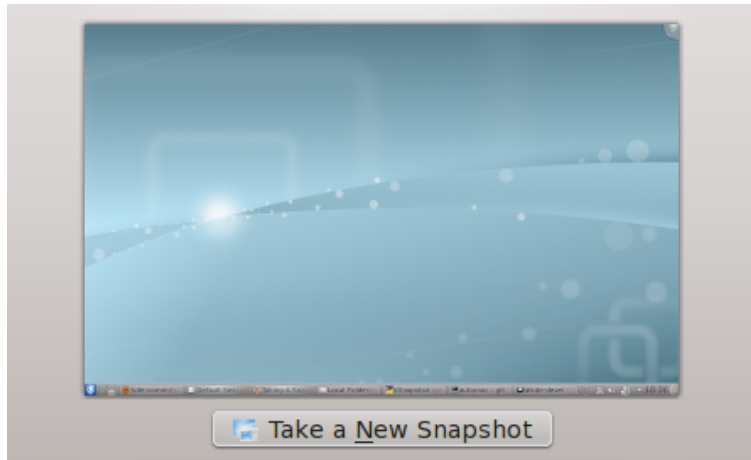
Once KSnapshot starts, you will see a window like the following:



2.2 Taking A Snapshot

KSnapshot grabs an image of your entire desktop immediately after it is started, but before it displays itself on screen. This allows you to quickly create full-desktop screenshot images.

The snapshot taken by KSnapshot is displayed in the preview window, which is located on top of the KSnapshot application window. Below is an example of the preview window from KSnapshot. Your preview will differ depending on what you have displayed on the desktop.



The snapshot can be saved by clicking on the **Save As...** (**Ctrl+S**) button. This opens the standard KDE save dialog, where you can choose the filename, the folder location, and the format that your snapshot will be saved in. If multiple snapshots are taken, the filename is automatically incremented to prevent you from overwriting previous snapshots. You may however edit the filename to anything you wish, including the name of a previously saved snapshot.

To take a snapshot of a single window, select the **Window Under Cursor** combo box entry (next to the **Capture mode** label), and then click on the **Take a New Snapshot** (**Ctrl+N**) button.

Depending on your **Snapshot delay** settings you get either a cross as the mouse pointer (for **No delay**), or a standard mouse cursor which you can use to work with a program until the delay is over and a snapshot is taken.

With **No delay**, the snapshot is taken immediately when you click into a window.

KSnapshot will display the new snapshot in the preview area, at which time you can choose to save the new image (by pressing **Save As...**) or to grab a new one, by pressing the **Take a New Snapshot** button.

To take a new snapshot of the entire desktop, select the **Full Screen** combo box entry and then click on the **Take a New Snapshot** button. KSnapshot will now capture the entire desktop if you press **Take a New Snapshot**.

Similarly, to take a snapshot of a rectangular region, select the **Rectangular Region** combo box entry and set the **Snapshot delay** to **No delay**, and then click on the **Take a New Snapshot** button. The mouse cursor will then change into a cross, and you can then use the mouse to select the region you want to capture. To take the snapshot press the **Enter** key or double click. Press **Esc** to quit.

You might want to take a snapshot of a non rectangular region. You can do so by selecting the **Freehand Region** combo box entry and set the **Snapshot delay** to **No delay**, and then click on the **Take a New Snapshot** button. The mouse cursor will then change into a cross, and you can then use the mouse to draw the region you want to capture. To take the snapshot press the **Enter** key or double click. Press **Esc** to quit.

To take a new snapshot of a section of a window, select the **Section of Window** combo box entry and then click on the **Take a New Snapshot** button. With **No delay** you get a cross as the mouse

pointer and you have to click once with the left mouse button into the window. The section of the window under the mouse cursor is now highlighted with a red border. Move the mouse to the wanted section and click the left mouse button to capture the screenshot.

If you have multiple screens, **Current Screen** captures the screen containing the mouse cursor when the screenshot is taken.

When keeping KSnapshot open to take several snapshots using **Rectangular Region** or **Freehand Region**, the subsequent snapshots will be initialized with the last shape used with this function (since you launched KSnapshot). You have then the possibility to adjust the handles of the rectangular shape, to move the freehand region, or to completely replace the shape by starting to draw a new one at a different place of the screen.

2.3 Additional Features

2.3.1 Snapshot Delay

The **Snapshot delay** box allows you to enter an arbitrary time delay, in seconds, between the time that you press the **Take a New Snapshot** button and the time that the snapshot is taken.

When a delay time has been set, you do not have to click the mouse button to capture a screenshot. This enables you to open a drop down menu, and take a picture of it.

2.3.2 Exclude Window decorations

Include window decorations is enabled by default in **Window Under Cursor** mode.

When you only want to capture the application itself without the surrounding window decoration, disable this option and take a new snapshot.

2.3.3 Include mouse pointer

Include mouse pointer is disabled by default. This setting is not available in **Rectangular Region** and **Freehand Region** modes.

When you want to include the mouse pointer in your snapshot, enable this option and take a new snapshot.

2.3.4 Buttons

There are four buttons located at the bottom of the KSnapshot window. Their function is described below.

Help

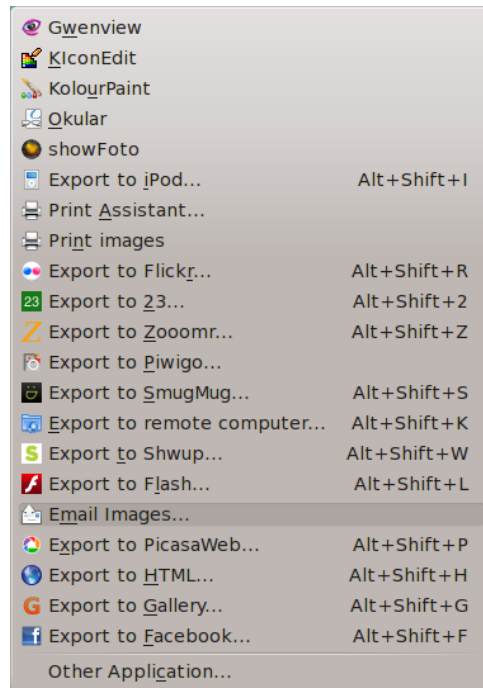
Gives you a menu where you can open the **KSnapshot Handbook**, report a bug, switch the language for KSnapshot or get some more information **About KSnapshot** and **About KDE**.

Send To...

This will allow to directly open the snapshot with all programs that are associated with your PNG (Portable Network Graphics) MIME type. Depending on what programs are installed, you will be able to open and edit the snapshot in your graphics applications or viewers.

Furthermore, if you have the KIPi plugins installed you will be able to print your snapshots, e-mail them and export directly to some social networks and websites, as shown on the screenshot below.

The KSnapshot Handbook



Copy

When you want to edit your snapshot in a graphics application without saving the snapshot, just click **Copy (Ctrl+C)** and insert the image into a viewer or graphics application.

Save As...

Saves the screenshot to a file in the selected format.

2.3.5 Drag and Drop

A captured image can be dragged to another application or document. If the application is able to handle images, a copy of the full image is inserted there.

If you drag a screenshot into a file manager window, a dialog pops up where you can edit the filename and select the image format and the file will be inserted into the actual folder.

If you drag the screenshot to a text box, the path to the temporary saved file is inserted. This is useful for example to upload a screenshot through web forms or to attach screenshots into bug reports on the [KDE bugtracker](#).

This works with all clients that do not pick up the image data, but only look for a URL in the dragged mimedata.

Chapter 3

D-Bus Interface

KSnapshot can be scripted using its D-Bus interface.

There are two ways to use the D-Bus interface: Qt™'s GUI `qdbusviewer` and the command line `qdbus`.

Examples:

- `% qdbus` will display all services available.
- `% qdbus org.kde.ksnapshot -`pidof -s ksnapshot`` will display the D-Bus interface for KSnapshot.
- `% qdbus org.kde.ksnapshot -`pidof -s ksnapshot` /KSnapshot` will display methods for controlling KSnapshot.

For more information, please visit [D-Bus tutorial](#).

Chapter 4

Credits and License

Program copyright

- 1997-2000 Richard J. Moore rich@kde.org
- 2000 Matthias Ettrich ettrich@kde.org

Documentation based on the original, copyright 1997-2000 Richard J. Moore rich@kde.org

This documentation is licensed under the terms of the [GNU Free Documentation License](#).

This program is licensed under the terms of the [GNU General Public License](#).