

The KSimond Handbook

Peter H. Grasch



The KSimond Handbook

Contents

1	Introduction	5
2	Using KSimond	6
3	Credits and License	9
A	Installation	10

Abstract

KSimond is a frontend for the Simond server component of the Simon speech recognition suite.

Chapter 1

Introduction

KSimond is a simple graphical front-end to Simond. It creates and displays a tray-icon from which you can start and stop the Simond server. Moreover it provides a configuration dialog in which it embeds the Simond configuration.

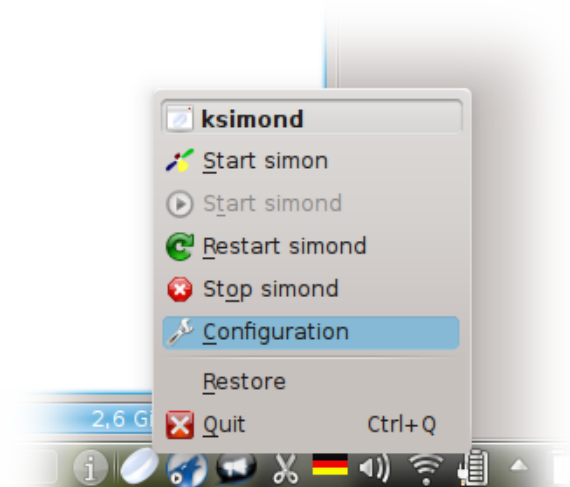
KSimond can be configured to be started on KDE start.

Please report any problems or feature requests to [our bug tracker](#).

Chapter 2

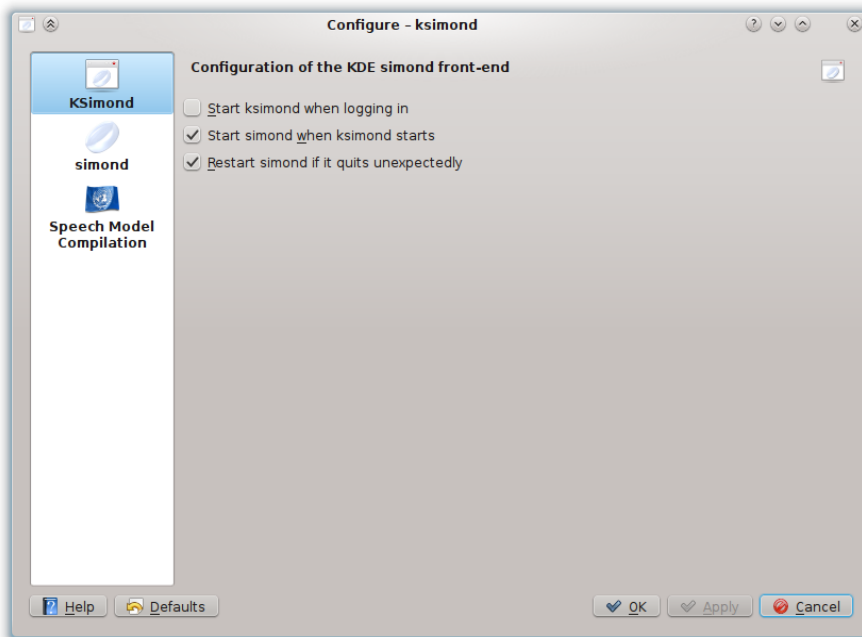
Using KSimond

Due to its minimalistic nature KSimond itself does not even have an application window. However, the tray icon has a context menu from where you can start and stop Simond and also open the configuration.



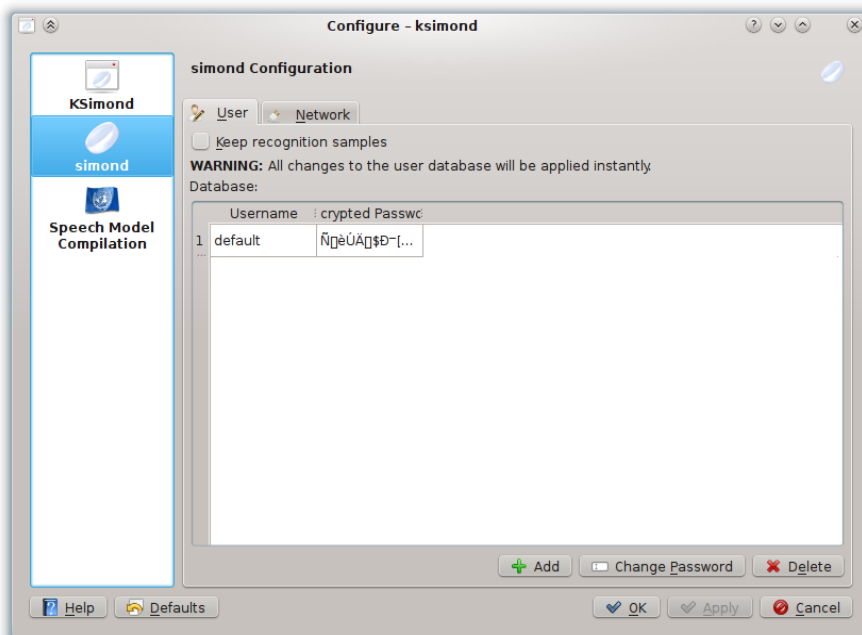
KSimond has the ability to launch automatically when KDE starts and to handle unexpected Simond crashes.

The KSimond Handbook

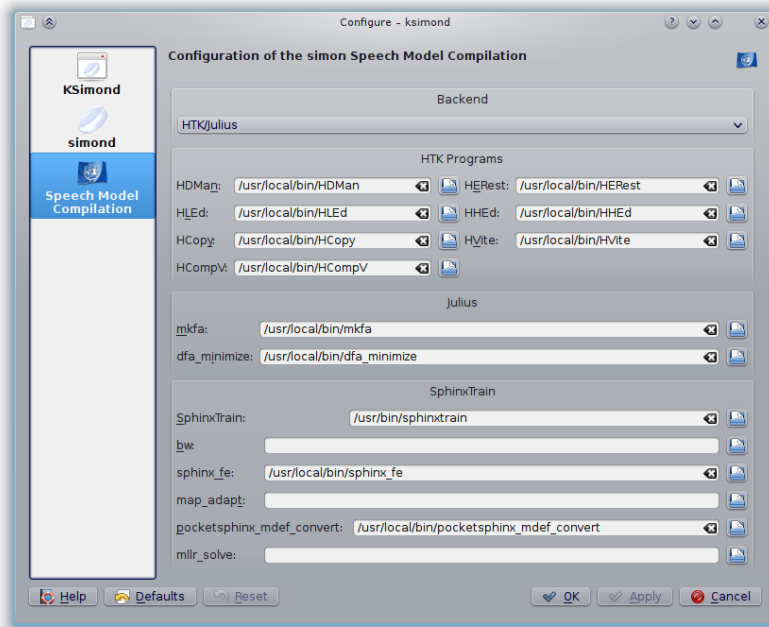
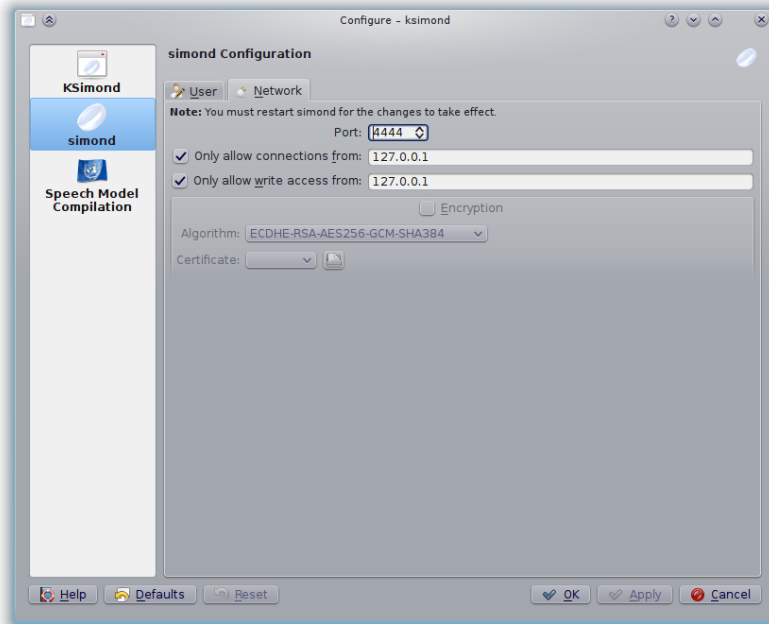


Please note that the option to start KSimond at login will work on both Microsoft Windows and when you are using KDE on Linux. Support for other desktop environments like Gnome, XFCE, etc. might require manually placing KSimond in the session autostart (please refer to the respective manuals of your desktop environment).

Alongside the KSimond configuration the Simond configuration modules are listed (also available through systemsettings). See the [Simond manual](#) for details.



The KSimond Handbook



Chapter 3

Credits and License

KSimond

Program copyright 2008-2010 Peter Gräsch peter.grasch@bedahr.org

Documentation Copyright (c) 2010 Peter Gräsch peter.grasch@bedahr.org

This documentation is licensed under the terms of the [GNU Free Documentation License](#).

This program is licensed under the terms of the [GNU General Public License](#).

Appendix A

Installation

Please see our [wiki](#) for installation instructions.