

# **The TNEF File Viewer Handbook**

**Michael Goffioul**



# The TNEF File Viewer Handbook

## Contents

1	Introduction	4
2	Credits and License	5

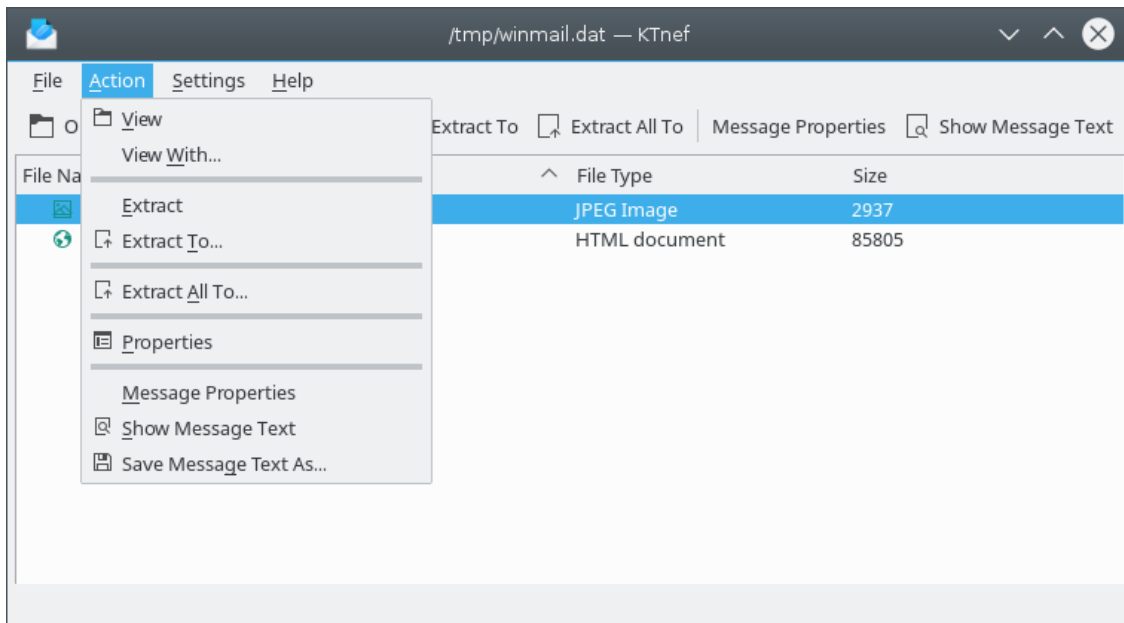
## Abstract

The TNEF File Viewer is an application for TNEF mail attachments.

## 1 Introduction

The TNEF File Viewer allows to handle easily mail attachments using the TNEF format. Those attachments are usually found in mails coming from Microsoft® mail servers and embed the mail properties as well as the actual attachments.

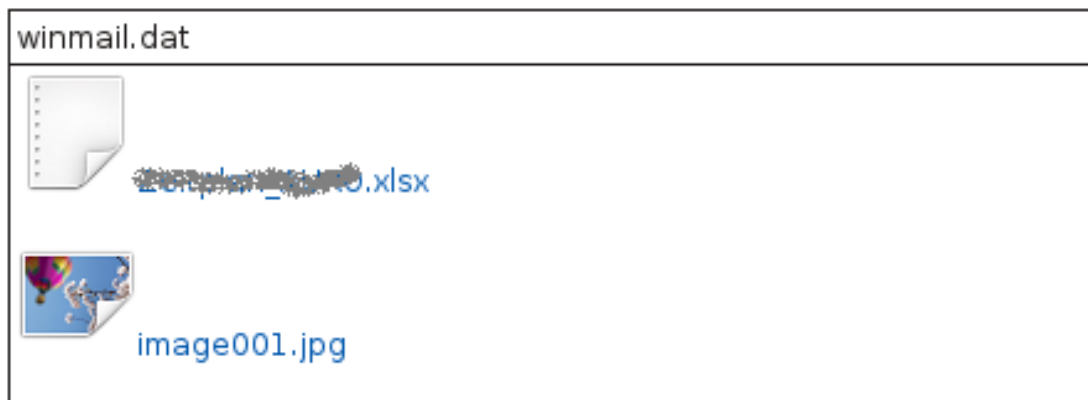
An attachment in TNEF format is most often named `winmail.dat` or `win.dat`.



This utility program allows to perform various operations on those attachments:

- View/open attachments with associated applications.
- Extract actual attachments
- View message properties (TNEF/MAPI)
- View/extract message formatted text (in RTF format)

KMail automatically shows the content of a TNEF attachment. You can open or save the attachments using the actions in the context menu.



## 2 Credits and License

TNEF File Viewer (KTnef)

Program copyright 2000 Michael Goffioul [kde-print@kde.org](mailto:kde-print@kde.org).

Program copyright 2012 Allen Winter [winter@kde.org](mailto:winter@kde.org).

This documentation is licensed under the terms of the [GNU Free Documentation License](#).

This program is licensed under the terms of the [GNU General Public License](#).