

The KTeaTime Handbook

Michael Korman
Matthias Hölzer-Klüpfel
Lauri Watts



The KTeaTime Handbook

Contents

1	Introduction	5
1.1	What's KTeaTime?	5
2	How to Use KTeaTime	6
2.1	Timing Your Tea	6
3	Menu Options	7
3.1	Select Your Tea	7
3.2	Start the Tea Timer	7
3.3	Configure	7
4	Credits	9

Abstract

This Handbook describes KTeaTime, the KDE Tea Cooker.

Chapter 1

Introduction

1.1 What's KTeaTime?

KTeaTime is a handy timer for steeping tea. No longer will you have to guess at how long it takes for your tea to be ready. Simply select the type of tea you have, and it will alert you when the tea is ready to drink.

Chapter 2

How to Use KTeaTime

When you start up KTeaTime, it will automatically dock itself in your panel. To access the menu, right click on the docked icon. This will present a list of options which are covered in more detail in the next chapter.

2.1 Timing Your Tea

Upon starting, the panel icon will be that of an tea mug. If you click with the right mouse button on the mug and select your tea, an animated clock visualizing the remaining time is displayed on the icon. After the specified time, the tea will be finished, and a suitable message box will be shown. At this point, you can close the message box by clicking on it. This resets also the timer and the clock on the mug disappears again.

NOTE

The timer should only be reset by those who really enjoy tea.

Chapter 3

Menu Options

The following section describes the menu options that are available in KTeaTime.

3.1 Select Your Tea

Clicking on the icon with the right mouse button will bring up a menu. At the top of the menu there are four menu items. Here, you can select what kind of tea you are preparing to drink. There are: **Black Tea**, **Earl Grey**, **Fruit Tea**, and **Green Tea**. These teas are preconfigured with a default time. Many people have complained that the times are not correct. Please be aware that the amount of time it takes to steep a cup of tea is based on personal preference. The times chosen are approximations. If you read on, you will learn how to change or delete these predefined times and to set your own time. A quick-and-easy way to set a custom time is to choose **Anonymous...** from the menu.

Clicking **Configure Notifications...** brings up the KDE Notification Settings for KTeaTime.

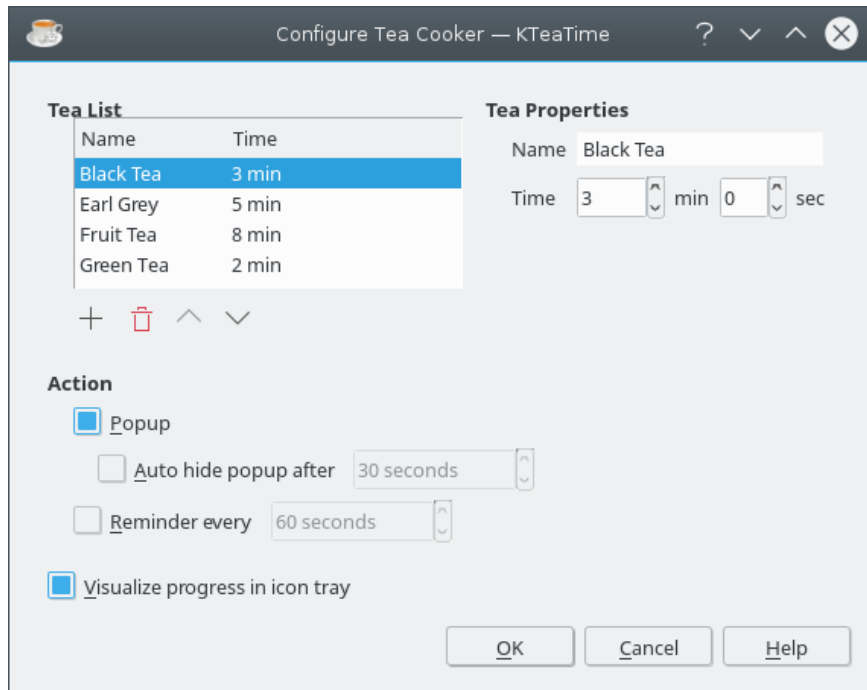
3.2 Start the Tea Timer

To start the tea timer select a tea from the context menu. As confirmation that you have indeed started the timer, a clock visualizing the remaining time is displayed in the panel icon.

3.3 Configure

This menu item opens up the configuration dialog box. A screenshot is shown below:

The KTeaTime Handbook



As shown in the picture, you may add new entries for other tea or change names, times and the order of existing entries. This is useful if you are brewing a cup of tea that is not on the list or if you do not agree with the predefined times. To edit one entry, mark it in the **Tea List** on the left and change the values in the **Tea Properties** on the right.

The box below is the **Action** field. Here you can define an action that will be executed when the time is up. If **Popup** is selected, a message box will appear alerting you to the fact that your tea is ready.

If you enable the check box labeled **Visualize progress in icon tray**, the progress will be shown as a little animated clock inside the icon.

Chapter 4

Credits

KTeaTime Copyright (c) 1998-1999 by Matthias Hölzer-Klüpfel hoelzer@kde.org

Documentation by Michael Korman michael.korman@uconn.edu

This documentation is licensed under the terms of the [GNU Free Documentation License](#).

This program is licensed under the terms of the [GNU General Public License](#).