

# **The KMix Handbook**

**Gaurav Chaturvedi**

**Developer: Christian Esken**

**Developer: Helio Chissini de Castro**

**Developer: Brian Hanson**



The KMix Handbook

# Contents

<b>1</b>	<b>Introduction</b>	<b>5</b>
<b>2</b>	<b>Main Window</b>	<b>6</b>
2.1	File Options . . . . .	7
2.2	Settings . . . . .	7
2.2.1	Select Master Channel . . . . .	8
2.2.2	Configure KMix . . . . .	9
2.2.2.1	General configuration . . . . .	9
2.2.2.2	Start configuration . . . . .	10
2.2.2.3	Volume control configuration . . . . .	11
<b>3</b>	<b>Advanced usage</b>	<b>12</b>
3.1	Remote controlling and scripting via D-Bus . . . . .	12
<b>4</b>	<b>Credits and License</b>	<b>13</b>

### **Abstract**

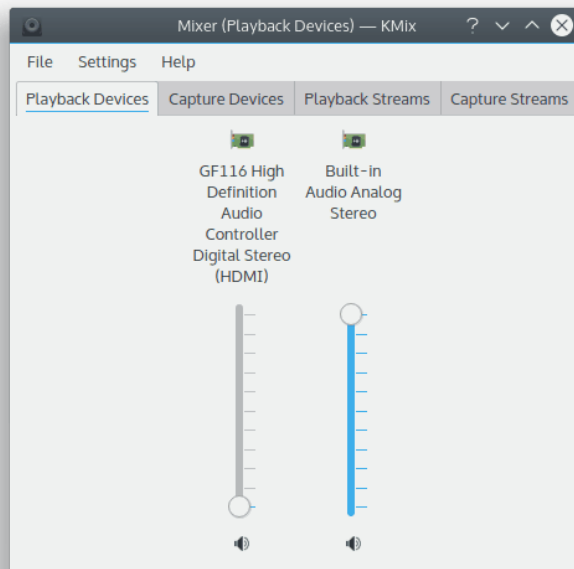
KMix is an application that allows you to change the volume of your sound card.

# Chapter 1

## Introduction

KMix supports several platforms and sound drivers.

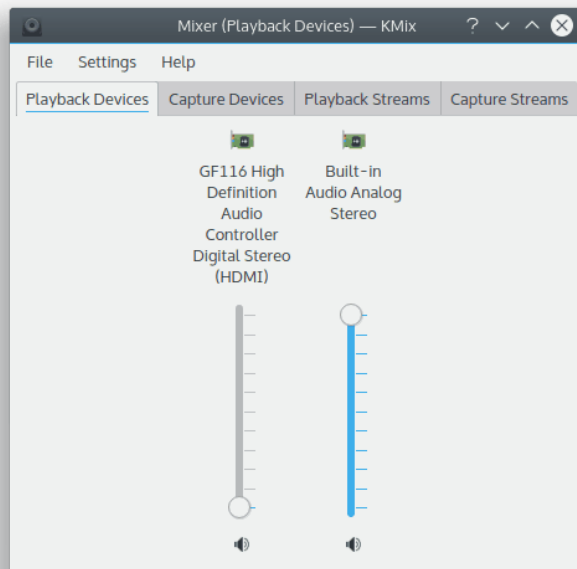
If you have both ALSA and Open Sound System drivers installed, KMix will use the ALSA driver.



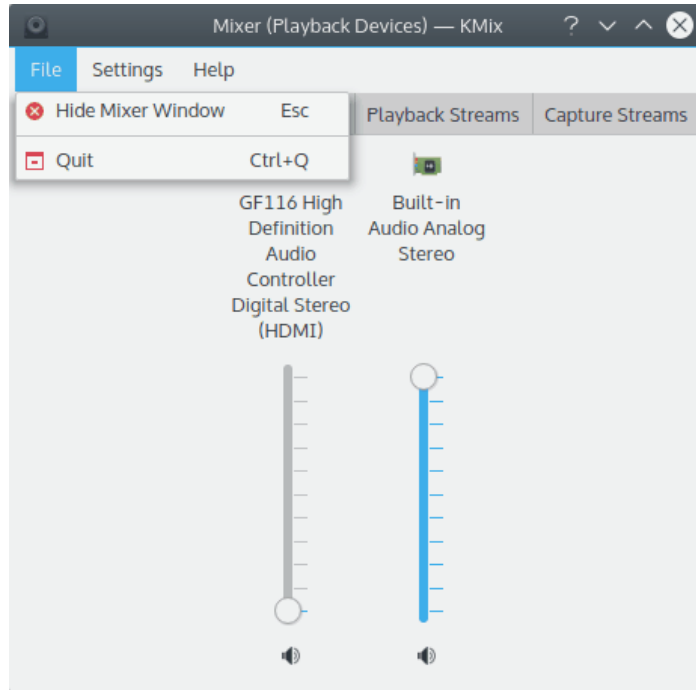
## Chapter 2

# Main Window

Overview of KMix Main Window

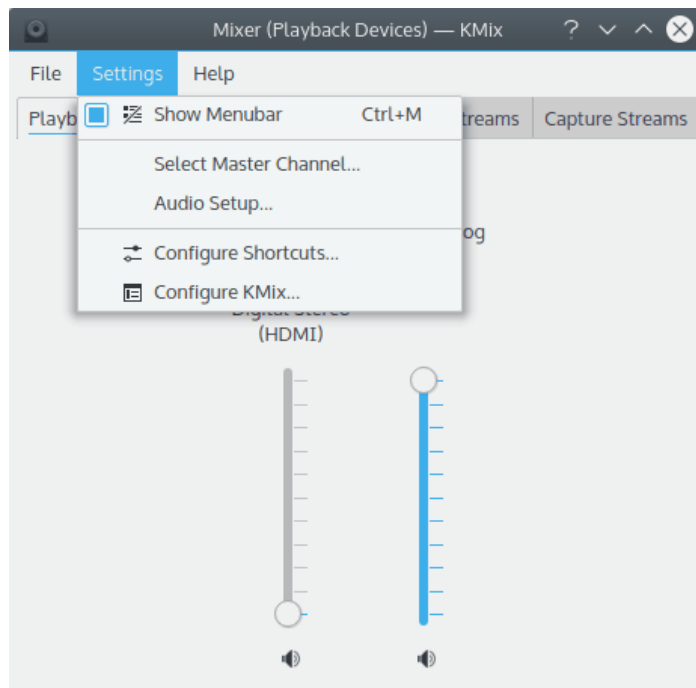


## 2.1 File Options



**File** → **Hide Mixer Window (Esc)**  
Hide Mixer Window

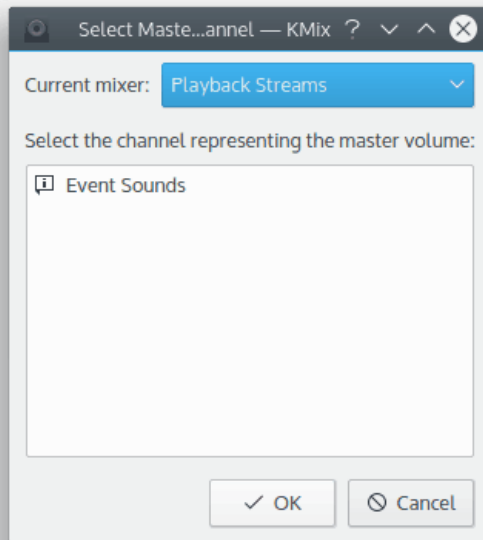
## 2.2 Settings



**Settings → Audio Setup**

Open [Phonon System Settings module](#) to configure the sound and video device preference and the backends used by KDE multimedia API, Phonon.

**2.2.1 Select Master Channel**

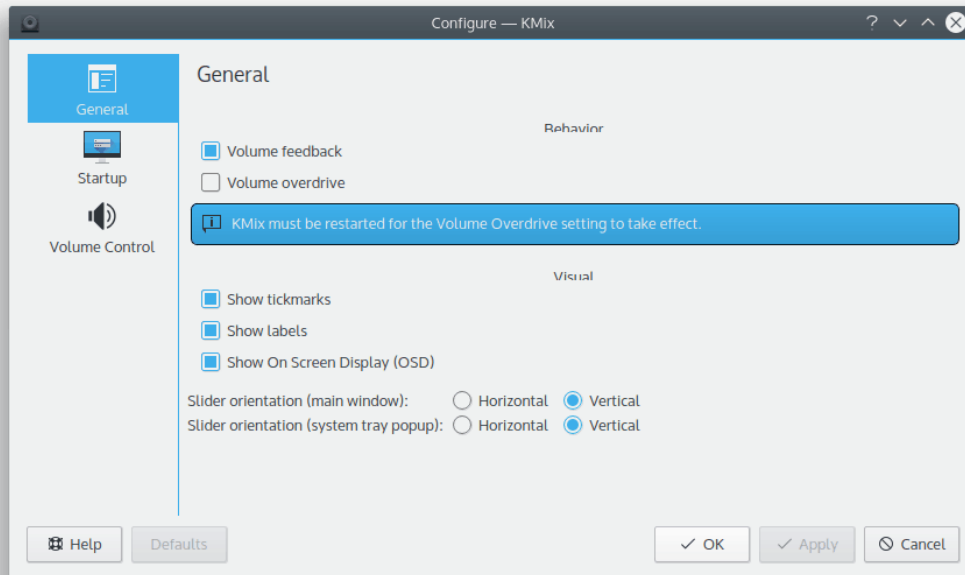


Select your KMix master channel.



## 2.2.2 Configure KMix

### 2.2.2.1 General configuration



Configure general KMix parameters.

#### **Behavior** → **Volume Feedback**

Check this box to enable audible feedback on volume change.

#### **Behavior** → **Volume Overdrive**

Check this box to allow volume to be more than recommended value (sometimes PulseAudio maximal volume exceeds the normal value). KMix restart is needed for this setting to take effect.

#### **WARNING**

Uncheck this item if there are audible sound distortions at the maximal volume.

#### **Visual** → **Show tickmarks**

Check this box to show tickmarks on controls.

#### **Visual** → **Show labels**

Check this box to show labels of controls.

#### **Visual** → **Show On Screen Display (OSD)**

Check this box to enable OSD show on hovering KMix tray widget.

#### **Slider orientation (main window)** → **Horizontal**

Check this radio button to orientate the control slider horizontally.

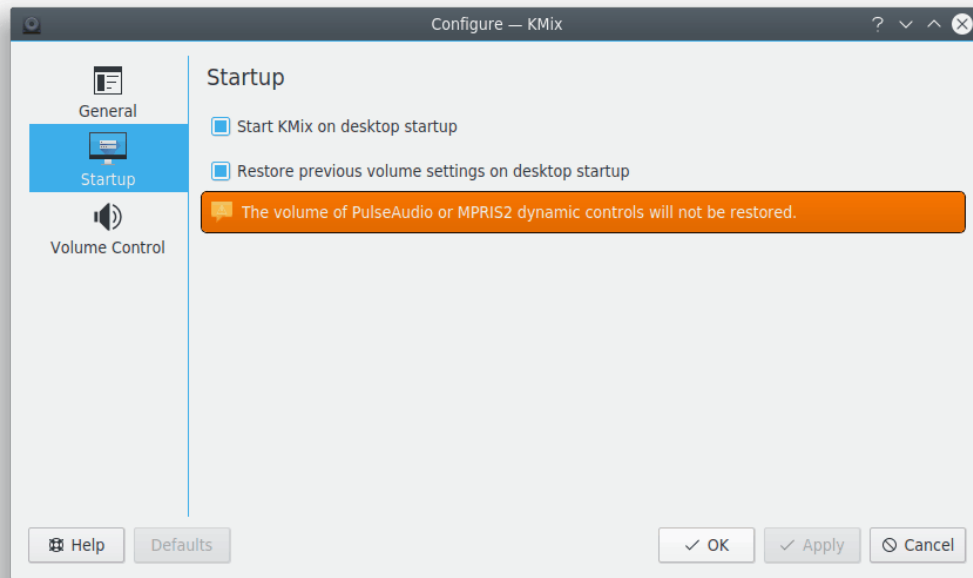
#### **Slider orientation** → **Vertical**

Check this radio button to orientate the control slider vertically.

#### **Slider orientation (system tray popup)** → **Horizontal/Vertical**

Same as the previous two radio buttons but for the system tray volume control (the panel that is shown after left mouse button click on KMix tray icon).

### 2.2.2.2 Start configuration



This page allows you to configure various KMix start parameters.

#### **Startup → Start KMix on desktop startup**

Check this box to enable KMix autostart with desktop environment.

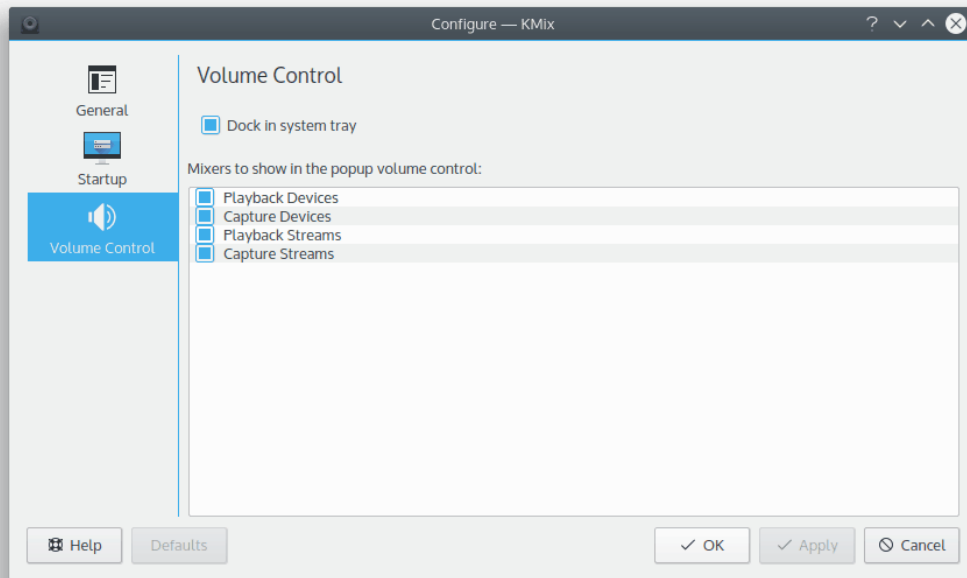
#### **Startup → Restore previous volume settings on desktop startup**

Check this box to enable volume levels and switches restoration to their last used settings on desktop start.

#### **WARNING**

The volume of PulseAudio or MPRIS2 dynamic controls will not be restored.

### 2.2.2.3 Volume control configuration



This page allows you to configure various KMix popup volume control parameters.

#### **Dock in system tray**

Check this box to dock KMix in system tray.

It is possible to select mixers that will be shown in the volume control using the corresponding list on this page.

## Chapter 3

# Advanced usage

### 3.1 Remote controlling and scripting via D-Bus

You can control KMix via D-Bus. This is for advanced users who want to achieve special tasks, like muting the PC every day at 10 pm, or for any other scripting task.

List all KMix related D-Bus methods and properties

```
qdbus org.kde.kmix
```

Getting volume level (0-100%):

```
qdbus org.kde.kmix /Mixers/0/Master_0 org.freedesktop.DBus.Properties.Get ←  
org.kde.KMix.Control volume
```

Setting volume level (0-100%):

```
qdbus org.kde.kmix /Mixers/0/Master_0 org.freedesktop.DBus.Properties.Set ←  
org.kde.KMix.Control volume 70
```

## Chapter 4

# Credits and License

KMix

Documentation copyright (c) 2010 Gaurav Chaturvedi [gaurav.p.chaturvedi@gmail.com](mailto:gaurav.p.chaturvedi@gmail.com)

Thanks to:

Matt Johnston [mattj@flashmail.com](mailto:mattj@flashmail.com) (copy and pasted a lot of things from his old KMix documentation)

This documentation is licensed under the terms of the [GNU Free Documentation License](#).

This program is licensed under the terms of the [GNU General Public License](#).