

# **The Dolphin Handbook**

**Peter Penz  
Orville Bennett  
Michael Austin  
David Edmundson  
Alan Blanchflower  
Frank Reininghaus**



# The Dolphin Handbook

# Contents

<b>1</b>	<b>Introduction</b>	<b>6</b>
<b>2</b>	<b>Using Dolphin</b>	<b>7</b>
2.1	Dolphin User Interface . . . . .	7
2.2	The Dolphin View . . . . .	8
2.2.1	Using the View . . . . .	8
2.2.2	Dolphin View Appearance . . . . .	9
2.2.2.1	View Modes . . . . .	9
2.2.2.2	Information in the View . . . . .	10
2.2.2.3	Preview . . . . .	10
2.2.2.4	Split . . . . .	10
2.2.3	Selecting Items in the View . . . . .	10
2.2.3.1	Selecting Items Using the Mouse . . . . .	11
2.2.3.2	Selecting Items Using the Keyboard . . . . .	11
2.3	Location Bar . . . . .	11
2.3.1	Bread Crumb Mode . . . . .	11
2.3.2	Editable Mode . . . . .	12
2.3.2.1	Using Kioslaves . . . . .	12
2.3.3	Places and Context . . . . .	13
2.4	Panels . . . . .	14
2.4.1	Places . . . . .	14
2.4.2	Information . . . . .	14
2.4.3	Folders . . . . .	15
2.4.4	Terminal . . . . .	15
2.5	Quick Tips . . . . .	15
2.5.1	Quick Bookmarking . . . . .	15
2.5.2	Filtering Files . . . . .	15
2.5.3	Finding Files and Searching in Files . . . . .	15
2.5.4	Mounting Storage Media . . . . .	16
2.5.5	Undo Actions . . . . .	16
2.5.6	Renaming A Batch Of Files . . . . .	16
2.5.7	Comparing A Selection Of Files or Folders . . . . .	17

<b>3</b>	<b>Configuring Dolphin</b>	<b>18</b>
3.1	The Dolphin Preferences Dialog . . . . .	18
3.1.1	General . . . . .	18
3.1.1.1	Behavior Tab . . . . .	19
3.1.1.2	Previews Tab . . . . .	20
3.1.1.3	Confirmations Tab . . . . .	20
3.1.1.4	Status Bar Tab . . . . .	20
3.1.2	Startup . . . . .	20
3.1.3	View Modes . . . . .	22
3.1.3.1	Common settings for all view modes . . . . .	22
3.1.3.2	Icons . . . . .	22
3.1.3.3	Compact . . . . .	22
3.1.3.4	Details . . . . .	23
3.1.4	Navigation . . . . .	23
3.1.5	Services . . . . .	24
3.1.6	Trash . . . . .	24
3.1.7	Trash . . . . .	25
3.2	Folder View Display Style . . . . .	26
3.2.1	The View Display Style dialog . . . . .	27
<b>4</b>	<b>Command Reference</b>	<b>28</b>
4.1	The Menubar in Dolphin's Main Window . . . . .	28
4.1.1	The File Menu . . . . .	28
4.1.2	The Edit Menu . . . . .	29
4.1.3	The View Menu . . . . .	30
4.1.4	The Go Menu . . . . .	31
4.1.5	The Tools Menu . . . . .	31
4.1.6	The Settings and Help Menu . . . . .	31
<b>5</b>	<b>Miscellaneous Questions</b>	<b>32</b>
<b>6</b>	<b>Credits and License</b>	<b>33</b>

### **Abstract**

Dolphin is the default file manager by KDE, designed with usability as a primary focus.

# Chapter 1

## Introduction

Dolphin is Plasma's default file manager. It aims to improve usability at the user interface level. Dolphin focuses only on being a file manager whereas Konqueror, which was KDE's default file manager in KDE 3 and can still be used for file management, is a universal viewer for many file types.

This design approach allows the developers to concentrate on optimizing the user interface for the specific task of file management.

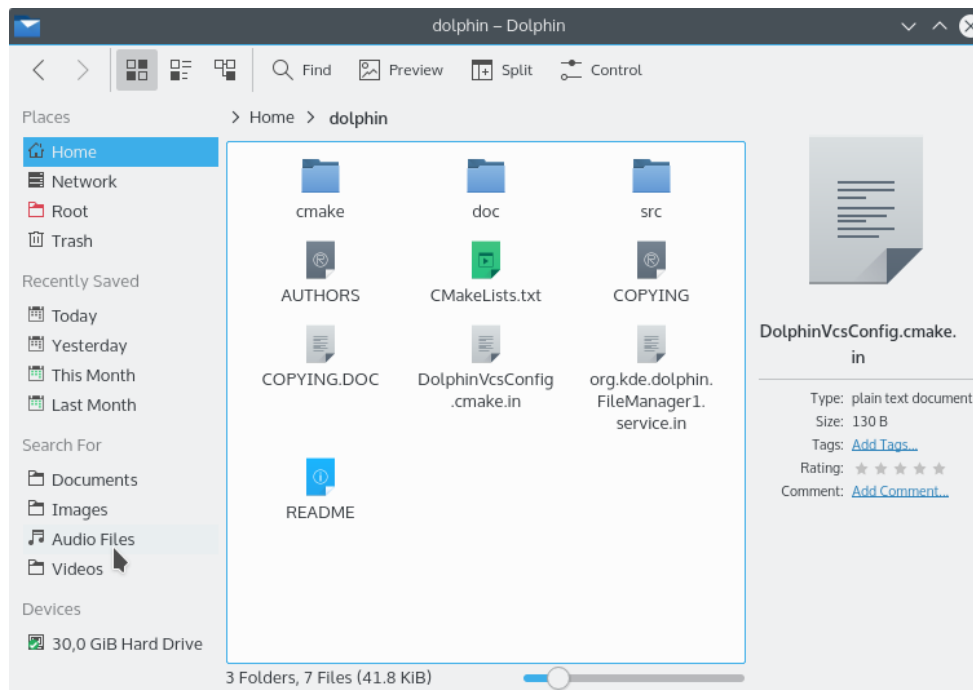
Please report any problems or feature requests to the Dolphin author via the bug report dialog. This is accessible either from the **Control** button at the right of the toolbar in the default mode without menubar; or from **Help** → **Report Bug...** menu of the application, if the menubar is shown.

## Chapter 2

# Using Dolphin

### 2.1 Dolphin User Interface

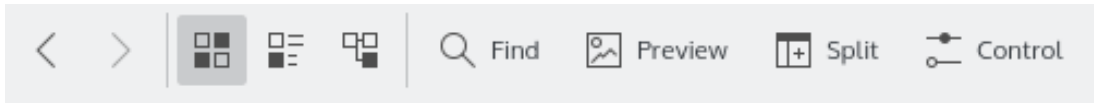
The screenshot below shows Dolphin's default user interface:



*Dolphin's default user interface.*

The elements of the default user interface are:

- The toolbar, which can be used for quick access to frequently used actions. The toolbar can be customized by clicking it with the right mouse button and choosing **Configure Toolbars...** from the context menu, with **Configure Toolbars...** from the **Control** button at the right of the toolbar or via **Settings** → **Configure Toolbars...** from the main menu.



*Toolbar items where the icon is sufficient for knowing the command do not have text alongside the icons. This can be changed by a right mouse button click and selecting the item text below **Show Text**. The **Control** button at the right side of the toolbar is only displayed if the menubar is hidden.*

- The location bar, which always displays the path to the current folder. It can be switched between two different modes, see the [section on the location bar](#) for details.
- The [view](#), which shows all files and folders in the current folder.
- The [Places panel](#), which provides quick access to bookmarked locations and disks or other media.  
If desktop search and file indexing are enabled in the **Desktop Search** module in the System Settings the panel provides **Recent** items and allows you to search for **Documents**, **Images**, **Audio Files** and **Video**.
- The status bar. It displays the name, size and type of the file which is currently hovered over with the mouse, or the number and size of the files which are selected. At the right, there is a zoom slider that allows you to adjust the size of the icons in the view.
- The menubar (hidden by default), which provides access to all commands and configuration options. See the [Command Reference](#) for a list of all menu commands. The menubar can be toggled with **Show Menubar (Ctrl+M)** from the **Settings** menu or the **Control** button.  
If the menubar is hidden, all its actions are available from the **Control** button.
- The additional **Information**, **Folders** and **Terminal** panels are hidden by default, for more information see [Panels](#).

## 2.2 The Dolphin View

### 2.2.1 Using the View

The view displays all files and folders in the current folder. These items can be accessed or manipulated in different ways:

- A file or folder can be opened by clicking it with the left mouse button (or double-clicking, if **Open by double-clicking instead** is enabled in the System Settings in the **Workspace** → **General Behavior** module).
- Clicking any item or the white area around the items with the right mouse button opens a context menu which provides access to many frequently used actions for the item or the current folder, respectively.
- If the left mouse button is pressed on an item, but not immediately released, the item can be dragged and dropped in another folder in the current view or in another Dolphin view (in another Dolphin window or in the same window if the view is split, see below) to move or copy it or to create a symbolic link. Items can even be dropped in another application to open them in that application.

Dolphin remembers the history of visited folders. To navigate backward or forward in the history, the corresponding buttons in the toolbar can be used:



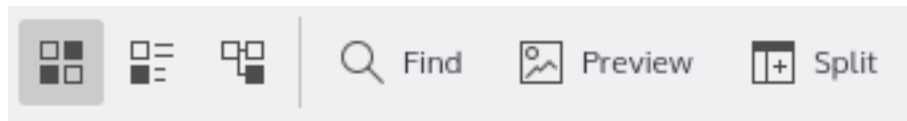


The **Back** and **Forward** buttons in the toolbar can be used to navigate in the history.

If you click with the middle mouse button the item in the history is opened in a new tab thus keeping the current tab with its content.

## 2.2.2 Dolphin View Appearance

The toolbar contains buttons to control the appearance of the view:



The buttons in the toolbar which control the appearance of the view.

All the settings discussed below and other options concerning, e.g. the sorting of the files in the current folder, can also be modified in the **View** menu and in the [View Display Style dialog](#). By default, these settings are remembered for each folder separately. This behavior can be changed in the ['General'](#) section of the settings.

### 2.2.2.1 View Modes

The first three buttons in the above screenshot switch between Dolphin's view modes.

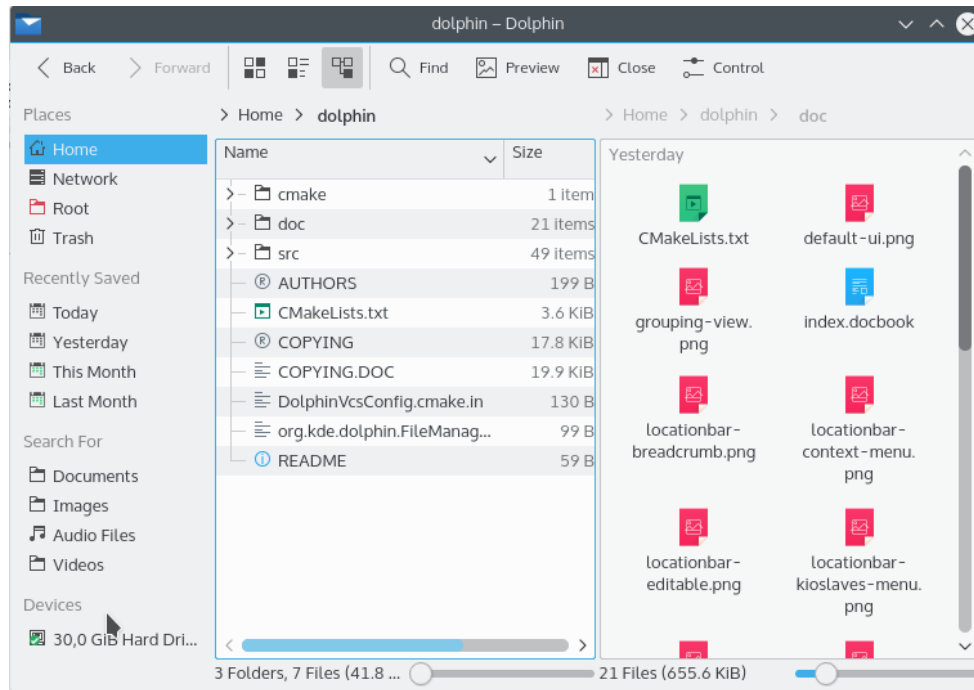
- In the **Icons** view, which is the default, files will be represented by an icon that visualizes the file type, and a folder icon will be shown for subfolders. The names of folders and files, and the items enabled in **View** → **Additional Information**, are displayed below the icons.
- The **Compact** view shows the folder contents as icons with the name beside it and the items enabled in **View** → **Additional Information** below the name. The items are grouped in columns similar to the **Short View** in the KDE file dialog.
- In the **Details** view, the folder contents are displayed as a detailed list which contains the name, size and last modification time of each item. Additional columns can be added by clicking a column header with the right mouse button.

In the context menu of the header line you can choose between custom or automatic column width. Automatic width adjusts the width of all columns once to display the longest item in the column completely, except for the **Name** column where the extension is replaced by '...'

The order of columns can be changed by drag and drop of column headers, except for the **Name** header, which is always the first column in this view.

The details view allows you to view the current folder in a tree-like fashion if [Expandable folders](#) are enabled: Each subfolder of the current folder can be 'expanded' or 'collapsed' by clicking on the > or v icon next to it.

## The Dolphin Handbook



*All view modes support grouping by the sort type selected in **View** → **Sort by***

### 2.2.2.2 Information in the View

In all view modes Dolphin shows at least an icon and a name for each item. Using **Additional Information** in the **View** menu or the context menu of the header in **Details** mode, you can select more information for each item to be shown:

**Size, Date, Type, Rating, Tags or Comment.**

Depending on the file type, additionally, sorting criteria can be selected:

**Document:** Number of words and lines

**Image:** Size and orientation

**Audio:** Artist, album, duration and track

The **Other** submenu allows you to select **Path, Link Destination, Copied From, Permissions, Owner** or **User Group**.

### 2.2.2.3 Preview

If **Preview** is enabled, the icons are based on the actual file or folder contents; e.g. for images a scaled down preview of the image is shown.

### 2.2.2.4 Split

If **Split** is clicked, two views are shown which can display the contents of different folders. This can be convenient for moving or copying files.

## 2.2.3 Selecting Items in the View

There are several ways to select items in the view. Once a group of items is selected, all actions, such as **Cut, Copy, Move to Trash**, and drag and drop operations, affect all selected items.

### 2.2.3.1 Selecting Items Using the Mouse

- You can press the left mouse button somewhere in the view and draw a rectangle around a group of items before releasing the button. This will select all items in the rectangle and clear the previous selection. If the **Shift** key is pressed during the selection process, the previous selection is kept.
- If the **Ctrl** key is pressed while an item is clicked with the left mouse button, the selection state of this item is toggled. If the **Ctrl** key is pressed while a rectangle is drawn around a group of items as described above, the selection state of all items in the rectangle will be toggled.
- If the **Shift** key is pressed while an item is clicked with the left mouse button, all items between the previous current item and the clicked item will be selected.
- If **Show selection marker** is enabled in the 'Behavior' tab of the **General** section of the settings, a small + or - button appears in the top left corner of the item which is currently hovered over with the mouse. Clicking this sign selects or deselects the item, respectively.

### 2.2.3.2 Selecting Items Using the Keyboard

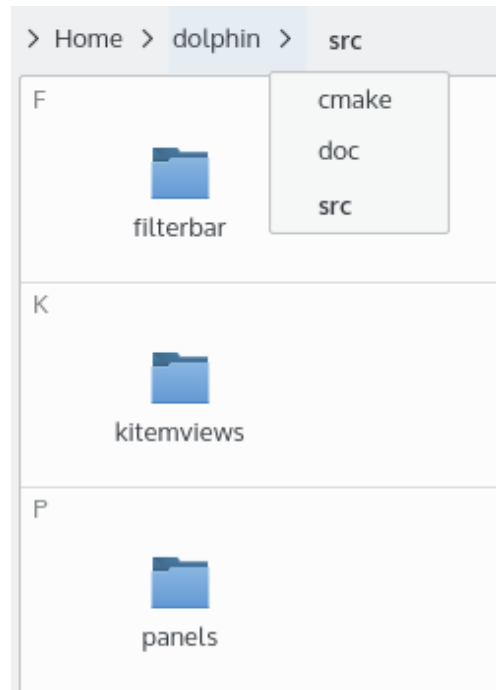
- If an arrow key, **Page Up**, **Page Down**, **Home**, or **End** is pressed, the new current item is selected, and the previous selection is cleared.
- If the **Ctrl** key is held while one of the above keys is pressed, the selection remains unchanged.
- If the **Shift** key is held while one of the above keys is pressed, all items between the previous current item and the new current item will be selected.
- If **Ctrl+Space** is pressed, the selection state of the current item is toggled.
- **Ctrl+A** selects all items in the view.
- **Ctrl+Shift+A** toggles the selection state of all items in the view.
- Select a file or folder by typing the first few letters of its name and the first matching item is selected. To clear the selection and cancel the keyboard search press **Esc** or wait longer than the timeout of 1 second.

## 2.3 Location Bar

The location bar, which can be found above Dolphin's view, displays the path to the current folder. The location bar has two modes.

### 2.3.1 Bread Crumb Mode

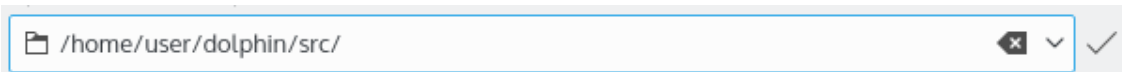
In the 'bread crumb' mode, which is the default, each folder name in the path to the current folder is a button which can be clicked to quickly open that folder. Moreover, clicking the '>' sign to the right of a folder opens a menu which allows you to quickly open a subfolder of that folder.



*Location bar in bread crumb mode.*

## 2.3.2 Editable Mode

When in bread crumb mode, clicking in the gray area to the right of the path with the left mouse button switches the location bar to 'editable' mode, in which the path can be edited using the keyboard. To switch back to bread crumb mode, click the check mark at the right of the location bar with the left mouse button.



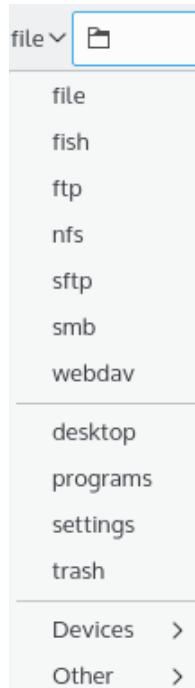
*Location bar in editable mode.*

### 2.3.2.1 Using Kioslaves

If the location bar is empty in editable mode, a drop down box appears in front of the bar listing all available kioslaves on your system. Kioslaves are programs built into KDE which add support for many different protocols to Dolphin and other KDE applications.

For example with the 'fish' kioslave Dolphin can be used to manage files and folders on a remote host that is accessible via SSH. To do this you would type **fish://username@remotehost** into the location bar. Similar remote file management can be done on remote hosts accessible via the FTP, NFS, SFTP, SMB (CIFS) or webdav protocols.

It is also possible to use the kioslaves drop down box to access System Settings, fonts, trash, other programs and devices attached to your computer. See the drop down box for the full list of capabilities available from kioslaves on your system.



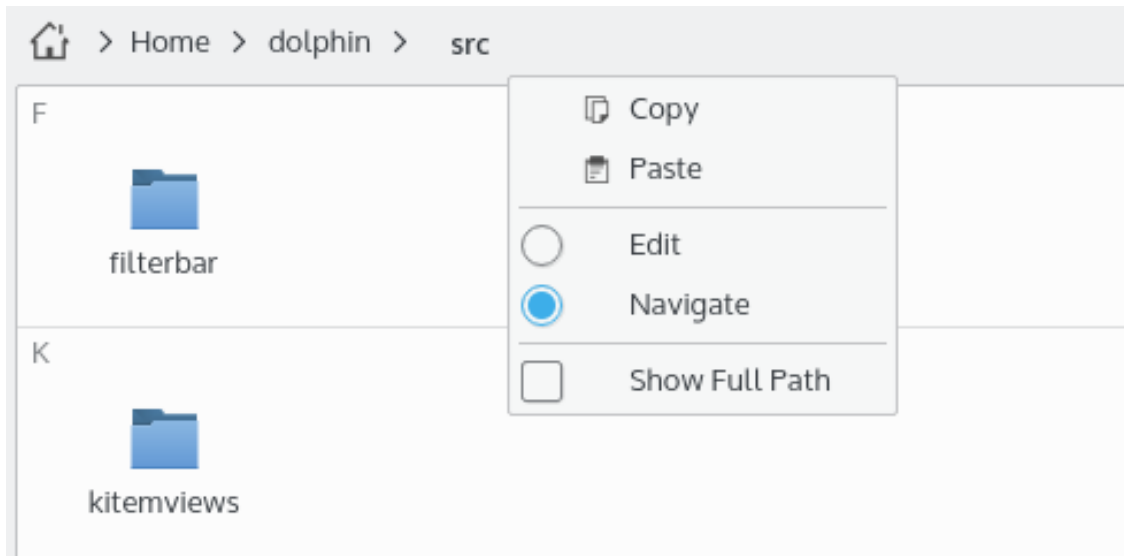
*List of available kioslaves.*

### 2.3.3 Places and Context

If the **Places** panel is hidden; in both modes an additional icon in front of the path is displayed. This icon can be clicked with the left mouse button to open a menu which offers quick access to 'places' and storage media. See the [section about the Places Panel](#) for details.



The context menu of the location bar offers actions to switch between the modes and to copy and paste the path using the clipboard. Check the last option in this context menu to display either the full path starting with the root folder of the file system or to display the path starting with the current places entry.



## 2.4 Panels

Dolphin allows a number of panels to be placed next to the view. These can be enabled in **View** → **Show Panels**. By unlocking the panels and clicking and dragging a panel title, the panel can be moved to a different position, even outside the window.

### 2.4.1 Places

The **Places** panel is located at the left of the window by default. The **Places** panel shows any locations you have bookmarked. It also shows any disk or media attached to the computer, recently accessed items and allows you to search for certain type of files. The order of these entries can be changed by drag and drop.

The easiest way to add a folder to the **Places** panel is to drag it and drop it in the panel. Moreover, you can click inside the panel with the right mouse button and choose **Add Entry...** from the context menu. The first procedure creates a system wide bookmark, the second procedure can be used to add the current path of the location bar or any desired folder or device. A dialog opens where label, location and icon can be edited and the usage of this entry can be restricted to Dolphin.

A right mouse button click opens the context menu to edit, add, hide or remove entries and change the icon size to one of the predefined values or lock/unlock the panels.

The context menu has an action to open the entry in a new tab. Devices can be unmounted using the context menu.

### 2.4.2 Information

The **Information** panel shows extended information about the selected items(s) or about the current folder or the file which is currently hovered over with the mouse, including size, type, and date of last modification. It also features a large preview of the selected item and allows you to assign a rating, tags, and comments to it.

### 2.4.3 Folders

The **Folders** panel shows a tree view structure of the file system. It only shows folders. Clicking a folder with the left mouse button opens this folder in the Dolphin view.

Use **Limit to Home Directory** to hide all folders from the tree view except your **Home**.

### 2.4.4 Terminal

This panel contains a terminal. The terminal will open at the folder currently shown in the Dolphin view. Changing the folder in the active Dolphin view will update the working folder of the terminal. Changing the directory in the terminal will update the working folder in the Dolphin view. The terminal only works with local media.

## 2.5 Quick Tips

The following are a number of tips to save time when using Dolphin.

### 2.5.1 Quick Bookmarking

To quickly create a bookmark in the **Places** panel for the current folder, right mouse button click in the work space and click **Add to Places** in the context menu.

#### NOTE

The corresponding menu item visibility can be toggled via the [Dolphin context menu settings](#).

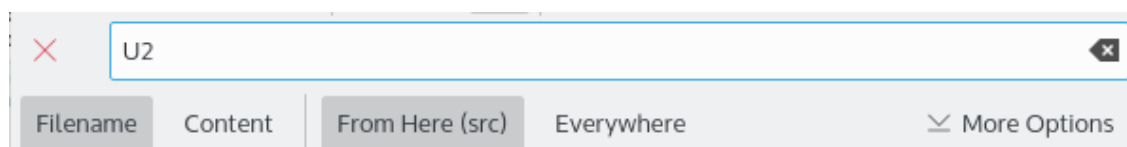
### 2.5.2 Filtering Files

Dolphin is capable of filtering files, i.e. showing only those items in the view whose name contains a given text. For example, if you wish to show only the MP3 files within a folder, you could filter for `'.mp3'`. This would then filter out all files whose name does not contain `'.mp3'`.

To filter files, first enable the filter bar, either by pressing **Ctrl+I** or via the menu: **Edit** → **Filter...** You can then enter the text to be filtered for in the filter bar. The filter bar can be disabled either by pressing **Esc**, or with a left mouse button click on the **Hide Filter Bar** icon.

### 2.5.3 Finding Files and Searching in Files

Dolphin is capable of searching for files and for content in files. If **Ctrl+F** is pressed or **Edit** → **Search...** is used, the **Search** bar will open already set up to search for files within the current folder and any sub-folders. Start to type into the find input box and the search starts immediately.

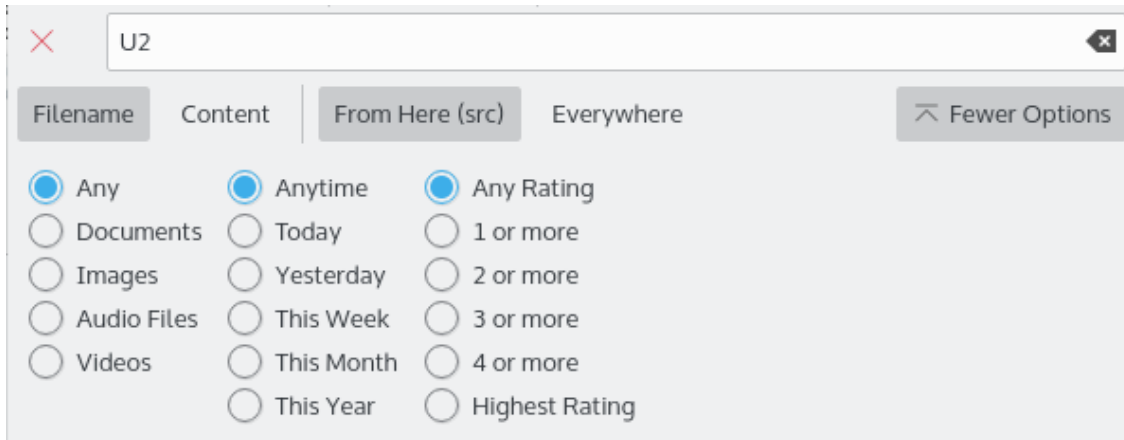


*Dolphin searching files and for content in files.*

The search is case insensitive, and does not require surrounding wildcards (**\*foo\*** and **foo** are equivalent), but you can use wildcards inside the search term. **\*** will match zero or more characters, **?** only one single character.

This feature can be used with running Baloo services; without these services a KIOSlave is launched to provide the search results.

The option from **Everywhere** with activated Baloo services searches in all indexed folders, without Baloo this option starts the search from the user's *Home* folder.



*Dolphin searching with More Options.*

Use the **More Options** button to extend the **Search** bar. This provides a very comfortable way for the user to shrink the number of search results.

To start a search select one or more file types (**Documents, Audio, Video, Images**), a time period, rating, and tag, if you have defined any via **tag: foo** in the input box.

It is possible to clear selection using the **Clear Selection** button.

Alternatively you can use these options in the **Places** panel together with the **Filter** bar to find files using Baloo or limit the search to files matching the filter expression.

Use the Save icon to save a search to the **Search For** section in the **Places** panel to quickly access it again in the future.

Use the **More Search Tools** drop-down list to select other search tools than Baloo.

## 2.5.4 Mounting Storage Media

A quick way to mount Storage Media is to click on the device in the **Places** panel. This will mount and open the device in Dolphin.

## 2.5.5 Undo Actions

Dolphin is capable of undoing changes you have made to files. For example if you moved a file to the Trash, Dolphin can undo this and move it back to its original location. To undo an action, press **Ctrl+Z** or select **Edit** → **Undo: (action name)** in the menu, e.g. **Undo: Rename**.

## 2.5.6 Renaming A Batch Of Files

Dolphin is capable of renaming a number of files at the same time. Each file will have the file name specified, including a number, e.g., **Image1.jpg, Image2.jpg, Image3.jpg**. This can be useful, e.g., for pictures taken with a digital camera.



If you wish to rename a batch of files, first select the files to be renamed. This can be done by pressing the left mouse button and drawing a rectangle around the files to be renamed before releasing it, or by holding **Ctrl** and clicking each file to be renamed (see [Selecting Items in the View](#) for more details on item selection). Then open the batch-rename dialog by pressing **F2** or via the File menu: **File** → **Rename...**

Then enter the name you wish to give the files. The **#** character must be present within the name. The files will then be renamed, where the **#** character is replaced by a different consecutive number for each file.

If all file extensions in your selection are different, the name of all files can be changed without using a **#** placeholder while preserving the file extensions. This is e.g. useful to rename a video file and all associated subtitle files, which have the same filename, but different extensions.

### 2.5.7 Comparing A Selection Of Files or Folders

If the Kompare application is installed, you can use it to see the differences between two files or folders.

First select the two files or folders to be compared. Then launch the Kompare application via the Tools menu: **Tools** → **Compare Files**. Kompare will then open showing the differences between the files or folders.

## Chapter 3

# Configuring Dolphin

Dolphin distinguishes two different kinds of settings:

- Settings which affect the general behavior of Dolphin. These can be configured using the [Preferences Dialog](#).
- Settings which determine how the contents of a folder are displayed in Dolphin. These settings are called [View Display Styles](#) and can be controlled with toolbar buttons, via the **View** menu, and with the [View Display Style dialog](#). In the default configuration, all folders use the same display style, but Dolphin can also be configured to remember each folder's display style separately in the '[General](#)' section of the settings.

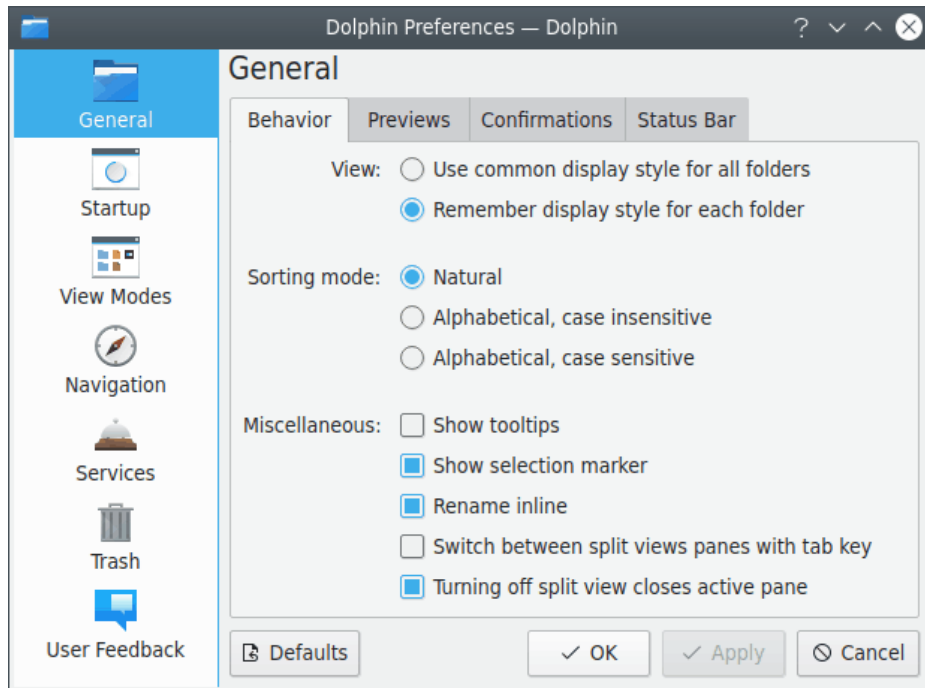
### 3.1 The Dolphin Preferences Dialog

The Preferences Dialog is opened via **Settings** → **Configure Dolphin...** in the menu in Dolphin's main window. The settings are divided into several groups which can be accessed by clicking the corresponding icon on the left of the dialog.

All settings except for the **Startup** page and the **Status Bar** tab on the **General** page are shared with Konqueror in filemanager mode.

#### 3.1.1 General

This group contains settings which control the general behavior of Dolphin. The group is divided further into four subgroups which can be accessed using the tab bar at the top.



*General Settings in Dolphin's Preferences Dialog.*

### 3.1.1.1 Behavior Tab

- In the **View** section, you can configure whether the same [view display style](#) is shared among all folders or folders remember their own individual view display styles.
- **Sorting Mode** controls how items are sorted in the view. If **Natural sorting** is enabled, the sort order of three example files will be
  1. File1,
  2. File2,
  3. File10.

If this option is disabled, the normal alphabetical sorting case sensitive or case insensitive will be used, which leads to the sort order

1. File1,
  2. File10,
  3. File2.
- When hovering over a file or folder with the mouse, a small window with relevant information is shown if **Show tooltips** is enabled.
  - **Show selection marker** shows a small + or - button above an item's icon if the item is hovered over with the mouse. These can be used to select or deselect the item.
  - Enable **Rename inline** to use this mode if only one item is currently selected. If this option is disabled or several items are selected, a dialog will be displayed for renaming.
  - Enabling **Switch between split panes with tab key** allows to switch split views with the **Tab** key.
  - Disable **Turning off split view closes active pane** to close the inactive pane when you are turning off the split view mode, e.g. pressing **F3**.

### 3.1.1.2 Previews Tab

In this tab, you can configure for which file types previews are shown. Moreover, the maximum size of local and remote files for which previews are generated can be chosen.

If previews are enabled for folders, previews of some files in the folder will be shown inside a folder's icon.

### 3.1.1.3 Confirmations Tab

In the ask for confirmation section, you can enable warning dialogs that are shown before potentially harmful actions.

It is also possible to choose the default action **When opening an executable file**. There are three options, namely **Always ask**, **Open in application**, and **Run script**.

#### WARNING

The confirmation settings for **Moving files or folders to trash** and **Deleting files or folders** affect file operations in Dolphin, Konqueror, Gwenview and all KDE applications using the default KDE file dialog, whereas **Closing Dolphin windows with multiple tabs** is a Dolphin specific setting.

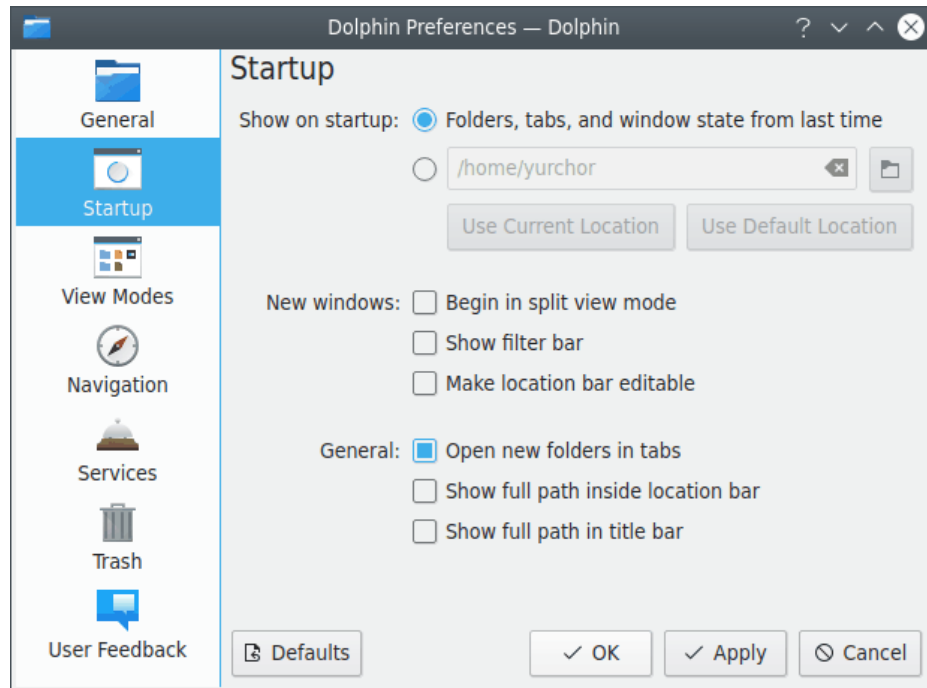
### 3.1.1.4 Status Bar Tab

In this tab, some additional items can be enabled for the status bar, provided the status bar is wide enough:

- The **Show status bar** item can be used for toggling status bar visibility.
- The **Show zoom slider** item allows switching visibility of the icon size widget.
- The **Show space information** item can be used to switch on and off a bar that shows how much space is free on the current drive.

## 3.1.2 Startup

This group contains settings which control the appearance of Dolphin on startup.



*Startup Settings in Dolphin's Preferences Dialog.*

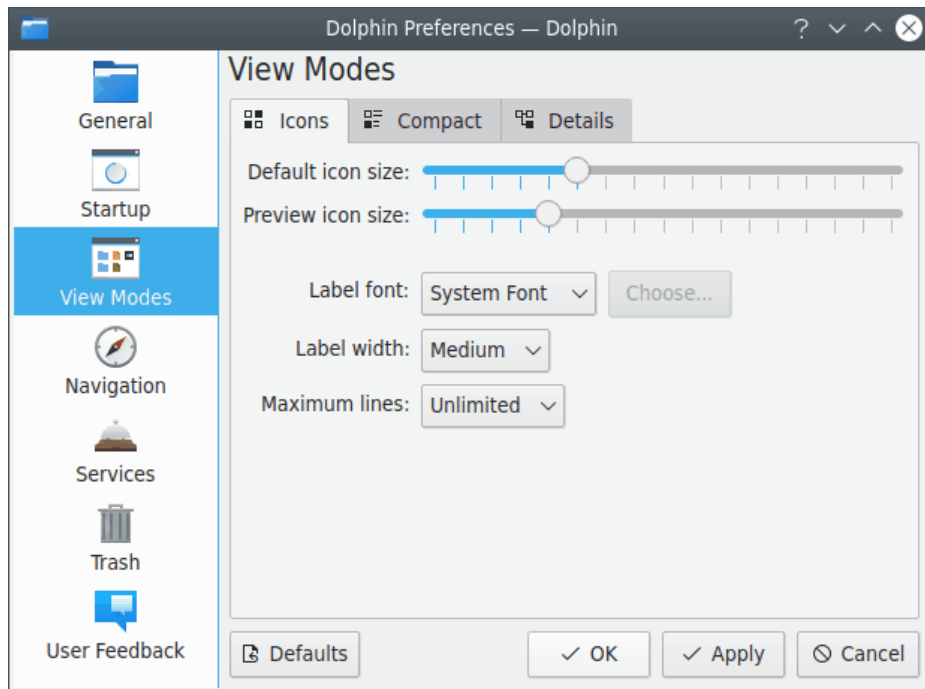
- The **Show on startup** option allows choosing the folder which is opened on startup. If the **Folders, tabs, and window state from last time** item is selected then
  - When launched from the GUI or CLI without any URLs, Dolphin restores session
  - When rebooting with Dolphin open, it restores session normally after the system comes back
  - When launched with URLs, Dolphin window is opened showing those URLs instead of restoring session
  - When Dolphin is already running and a new window is opened, that new window shows a single tab with the same URL as was visible in the previously-open Dolphin instance

The location of the folder can also be entered directly or chosen in a dialog which can be opened by clicking the button showing a 'folder' icon. Moreover, the current location or the default location (which is the user's home folder) can be used as the startup folder by clicking the corresponding button.

- **Begin in split view mode** controls if the [Dolphin view](#) is split on startup or not for new windows.
- **Show filter bar** controls if the filter bar is shown on startup or not. See the [section on the filter bar](#) for details.
- **Make location bar editable** controls if the location bar is in editable mode on startup. The bread crumb mode of the location bar is used otherwise. See the [section about the location bar](#) for details about the two modes.
- **Open new folders in tabs** controls whether Dolphin should open a new folder in a new tab of the current instance when called externally. If not enabled, the new folders will be opened in new instances of Dolphin. By default this option is enabled.
- If **Show full path inside location bar** is enabled, the full path of the current location is shown in the bread crumb mode of the location bar. Otherwise, a shortened version of the path is shown if it begins with the path of one of the places in the **Places** panel.
- **Show full path in title bar** makes it easy to distinguish between files or folders with the same name in different folders.

### 3.1.3 View Modes

This group contains settings which control the behavior of Dolphin's view modes. The three view modes (Icons, Compact, and Details) are accessible via the tab bar at the top.



*View Modes Settings in Dolphin's Preferences Dialog.*

#### 3.1.3.1 Common settings for all view modes

All three view modes have some common settings:

- Sliders which control the size of the icons. The **Default** or **Preview** sizes are used if previews are disabled or enabled, respectively. Note that the icon size can be changed easily with the zoom slider in the status bar if the corresponding option is enabled in the ['General' section of the settings](#).
- A setting for the font used in the view mode: either the system font or a custom font can be chosen.

The other settings in the **Text** section which apply to only one of the view modes are discussed below.

#### 3.1.3.2 Icons

- **Width** controls the minimum width that is reserved for the text of a file item.
- **Maximum lines** means maximum number of text lines below the icon.

#### 3.1.3.3 Compact

- **Maximum width** controls the maximum width that is reserved for the text of a file item.

### 3.1.3.4 Details

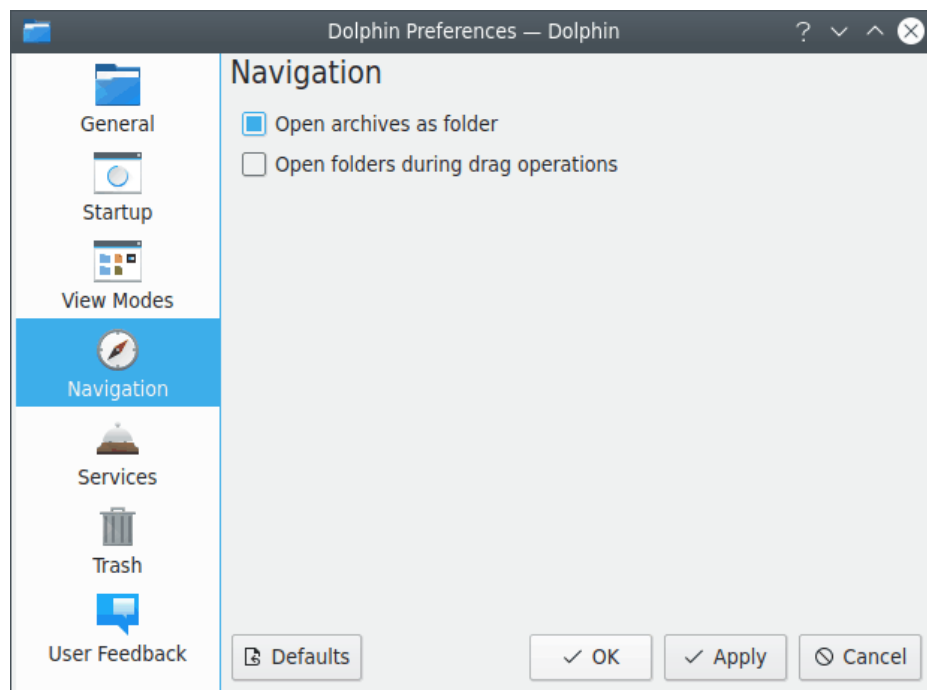
- **Expandable folders** determines whether any folders that have subfolders are displayed in a tree view, where the sub items can be expanded by left mouse button clicking the > icon and collapsed by clicking the v icon.

**Folder size displays** allows defining the property to use then sorting folders by their size. It is possible to sort folders by **Number of items** or **Size of contents** and choose a limit to the recursive level (can be useful to constrain unneeded iterations in the deep folder structures or on the slow file systems).

The **Date style** option can be used to configure the mode to display dates in Dolphin. It is possible to choose between **Relative** (e.g., 'Yesterday, 3:00pm') or **Absolute** (e.g., '2020-12-23 15:00').

### 3.1.4 Navigation

This group contains settings which control how navigation in the folder structure and in archives works.

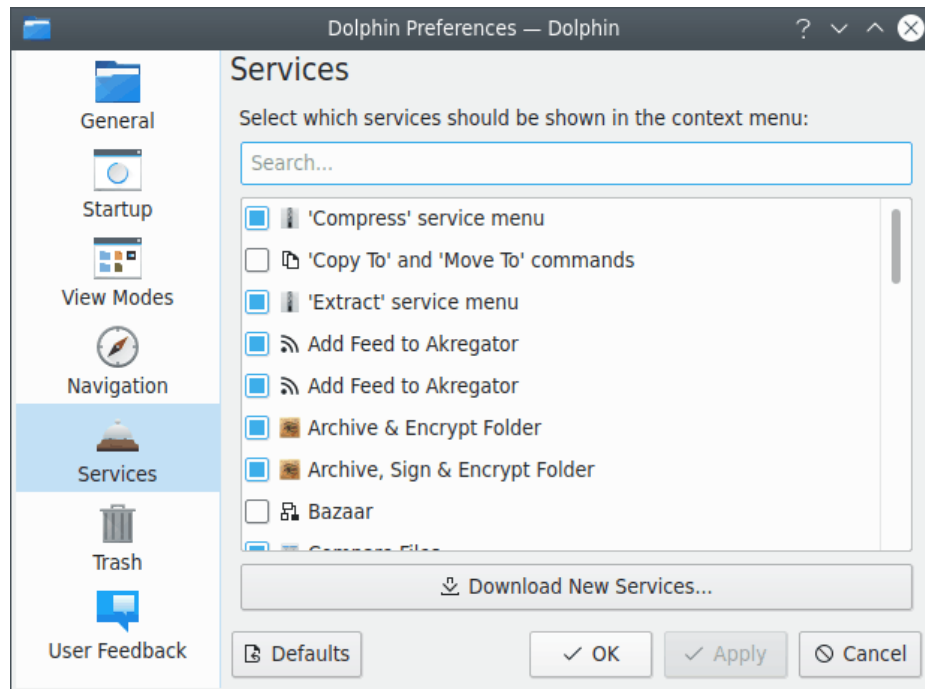


*Navigation Settings in Dolphin's Preferences Dialog.*

- The option to open items with a single or double mouse click is a system wide setting and can be changed in the System Settings in the **Workspace** → **General Behavior** module.
- Archives will be opened inside Dolphin, and not in an external application, if **Open Archives as folder** is enabled.
- If **Open folders during drag operations** is enabled, dragging an item with the mouse and hovering over a folder with it for a short time will open that folder. This allows you to move or copy items quickly to folders which are several levels deeper in the folder hierarchy.

### 3.1.5 Services

This group offers a selection of services that can be shown in the **Actions** submenu of Dolphin's context menu which appears when clicking a file or folder with the right mouse button.



*Services Settings in Dolphin's Preferences Dialog.*

Using the **Download New Services** you can fetch additional services for the context menu.

If you have installed Dolphin's plugins for **Bazaar**, **Mercurial**, **Git** or **Subversion** from the kdesdk module these services are shown in the list. If these plugins are enabled and you enter a folder which is under version control, the version state (locally changed, up to date etc.) is indicated by icons and you have additional entries in the context menu like commit, update, add, remove etc.

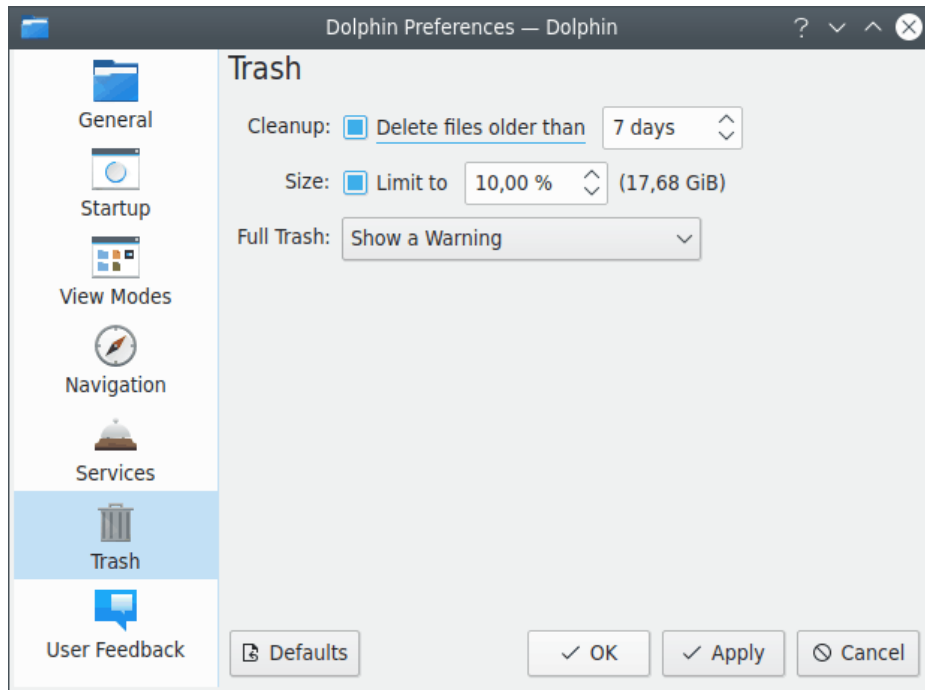
In the service list you can also choose if the **Copy To**, **Move To**, **Add to Places**, **Sort By**, **View Mode**, **Open in New Tab**, **Open in New Window**, **Copy Location**, and **Duplicate Here** commands are shown in the context menu.

Dolphin has to be restarted to activate the changes for some of these settings.

### 3.1.6 Trash

This group contains settings which control the behavior of the trash.



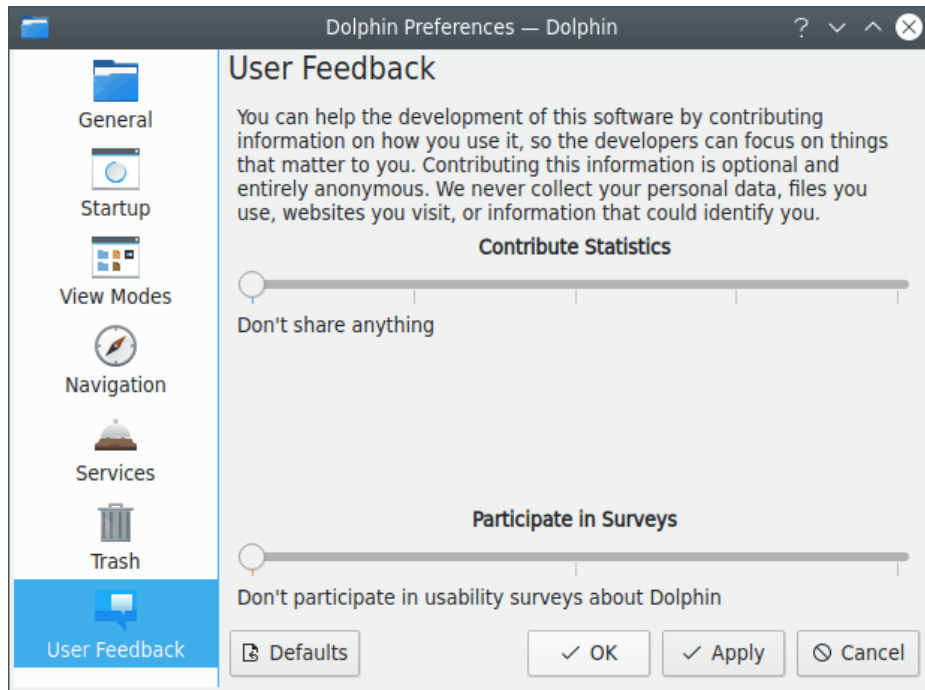


*Trash Settings in Dolphin's Preferences Dialog.*

- Files which are older than a configurable number of days can be deleted automatically.
- The size of the trash can be limited to a configurable percentage of the disk size. If this limit is reached, a warning can be issued, or the oldest or largest files can be deleted automatically.

### 3.1.7 Trash

This group contains settings which control your contributing information on the Dolphin usage to its developers.



*User Feedback Settings in Dolphin's Preferences Dialog.*

- You can contribute some feedback on Dolphin if you wish. Use sliders to configure your level of participation.

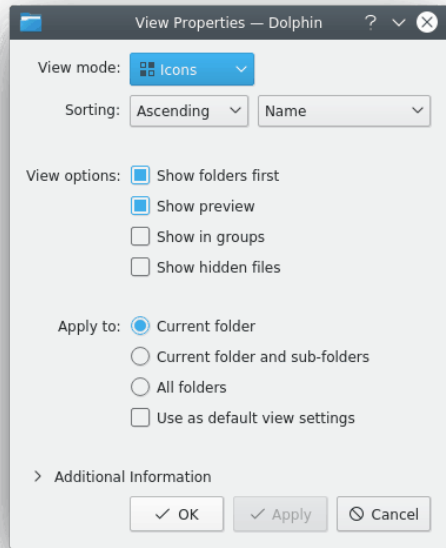
## 3.2 Folder View Display Style

The following settings control how the contents of a folder are displayed in the Dolphin view, and are stored on a per-folder basis by default:

- The view mode (Icons, Compact, Details)
- The sorting of items, which is determined by the sort order (ascending, descending) and the attribute (such as name, size,...) that the items are sorted by
- Sorting of folders and files – are folders shown first or not?
- Previews – are they shown instead of icons (based on the settings made in [Previews tab of Dolphin's General settings](#)) or not?
- Are items shown in groups in the views?
- Are hidden files shown?
- What additional information (besides the name) is shown in the Icons or Details view?

The view display style can be configured in the **View** menu, some (such as the view mode) can also be changed using toolbar buttons.

### 3.2.1 The View Display Style dialog



*The View Display Style Dialog.*

The **View Display Style** dialog can be used to quickly modify the view display styles for many folders at once. This is done for the current folder, for the current folder including all subfolders, or even for all folders, depending on the choice made in the **Apply to** section.

If **Use as default view settings** is enabled, the chosen view properties will also be used for all folders which do not have customized view properties yet.

## Chapter 4

# Command Reference

By default the menubar is not shown. All actions described here either can be accessed with toolbar buttons or with items in the menu of the **Control** toolbar button.

### 4.1 The Menubar in Dolphin's Main Window

#### 4.1.1 The File Menu

**File** → **Create New**

Creates a new object (such as a folder or a text file) in the current folder.

You will find an explanation of all available objects in Konqueror's handbook in the chapter [Create New](#).

**NOTE**

It is possible to create your own **Create New...** submenu items. Use files from [KIO source repository](#) as a reference and put the resulting `.desktop` file into the `.local/share/templates` in your home directory (the address can be determined using the `kf5-config --path templates` command in Konsole), then restart Dolphin.

**File** → **New Window (Ctrl+N)**

Opens a new Dolphin window.

**File** → **New Tab (Ctrl+T)**

Opens a new tab.

**File** → **Close Tab (Ctrl+W)**

Closes the current tab.

**File** → **Undo close tab (Ctrl+Shift+T)**

Reopens the last closed tab.

**File** → **Rename (F2)**

Renames one currently selected item inline. Opens the [batch rename dialog](#) if several items are selected.

**File** → **Move to Trash (Del)**

Moves the currently selected item(s) to the trash.

**File → Delete (Shift+Del)**

Permanently deletes the currently selected item(s). The items are not moved to the trash and cannot be restored.

**File → Show Target**

This action highlights a link target in a new Dolphin window.

**File → Duplicate Here (Ctrl+D)**

Creates duplicates of selected items appending *copy* to the end of their names.

**File → Properties (Alt+Return)**

Shows the properties dialog for the currently selected item(s).

**File → Quit (Ctrl+Q)**

Exits Dolphin.

### 4.1.2 The Edit Menu

**Edit → Undo (Ctrl+Z)**

Undoes the last action performed by Dolphin.

**Edit → Cut (Ctrl+X)**

Cuts the currently selected item(s).

**Edit → Copy (Ctrl+C)**

Copies the currently selected item(s).

**Edit → Paste Clipboard Contents... (Ctrl+V) or Edit → Paste one File or Edit → Paste one Folder or Edit → Paste x Items**

Pastes the currently copied/cut items to the current folder. If the clipboard does not contain files or folders, the clipboard contents (such as text or image data) will be pasted into a new file. The name of this file has to be entered in a dialog.

**Edit → Copy to inactive split view (Ctrl+F5)**

Copies the currently selected item(s) from the active split view to the inactive split view.

**Edit → Move to inactive split view (Ctrl+F6)**

Moves the currently selected item(s) from the active split view to the inactive split view. Is disabled if the current user does not have write permission on the selected item(s).

**Edit → Filter... (Ctrl+I)**

Enables and disables the [filter bar](#). You can also use the alternate shortcut **Shift+I** for this action.

**Edit → Search... (Ctrl+F)**

Opens the find bar. Enter a search term into the edit box and select to search for filename or in contents of files starting from the current folder or everywhere.

**Edit → Select All (Ctrl+A)**

Selects all files and folders in the current folder.

**Edit → Invert Selection (Ctrl+Shift+A)**

Selects all unselected items and deselects all selected items in the current folder.

### 4.1.3 The View Menu

**View → Zoom In (Ctrl++)**

Increases the size of icons in the view.

**View → Zoom Out (Ctrl+-)**

Decreases the size of icons in the view.

**View → Zoom Reset (Ctrl+0)**

Resets the size of icons in the view to default.

**View → View Mode**

Changes the view mode to **Icons (Ctrl+1)**, **Compact (Ctrl+2)** or **Details (Ctrl+3)**.

**View → Sort By**

Changes whether items are sorted by **Name** or other criteria described in [Information in the View](#).

**Descending** reverses the sort order. **Folders First** sorts folders before files.

**View → Show Additional Information**

Displays additional information described in [Information in the View](#).

**View → Show Previews**

Displays a symbolic preview of the file contents in the different view modes.

**View → Show in Groups**

Displays the content of the current folder grouped by the option selected in **Sort By**.

**View → Show Hidden Files (Alt+.)**

Shows all the hidden files and sub-folders within the current folder. There is an alternate shortcut **Ctrl+H** for this action.

**View → Split (F3)**

Enables and disables the split view mode.

**View → Reload (F5)**

Reloads the current folder.

**View → Stop**

Stops loading/reading the contents of the current folder.

**View → Show Panels**

Enables and disables the different [panels](#): **Places (F9)**, **Information (F11)**, **Folders (F7)**, **Terminal (F4)**. With **Lock Panels** the panel header with caption and two buttons is hidden to save space and the panels are immutable, with **Unlock Panels** the header is visible and the panel can be moved to the right or left or even outside the main window.

**View → Location Bar → Editable Location (F6)**

Changes the location bar between the two modes; the [bread crumb mode](#) and the [editable mode](#).

**View → Location Bar → Replace Location (Ctrl+L)**

Switches the location bar to [editable mode](#), if necessary, and selects the location such that it can be replaced quickly.

**View → Adjust View Display Style...**

Opens the [View Display Style Dialog](#).

#### 4.1.4 The Go Menu

**Go → Up (Alt+Up)**

Changes to the folder above the current folder.

**Go → Back (Alt+Left)**

Changes to the previously viewed folder.

**Go → Forward (Alt+Right)**

Undoes a 'Go Back' action.

**Go → Home (Alt+Home)**

Changes to the users home folder, e.g. /home/Peter/.

**Go → Recently Closed Tabs**

Shows a list of recently closed tabs which can be reopened.

#### 4.1.5 The Tools Menu

**Tools → Open Terminal (Shift+F4)**

Opens Konsole within the current folder.

**Tools → Open Preferred Search Tool (Ctrl+Shift+F)**

Opens preferred search tool in the current folder.

**Tools → Compare Files**

Compare the currently selected files or folders with Kompare. This action is only enabled if two files or folders are selected.

**Tools → Select Remote Charset**

Allows you to choose the charset used by a remote connection manually.

#### 4.1.6 The Settings and Help Menu

Dolphin has the common KDE **Settings** and **Help** menu items, for more information read the sections about the [Settings Menu](#) and [Help Menu](#) of the KDE Fundamentals.

## Chapter 5

# Miscellaneous Questions

1. *Has Dolphin replaced Konqueror?*

Dolphin is not intended to be a competitor to Konqueror: Konqueror acts as a universal viewer being able to show HTML pages, text documents, folders and a lot more, whereas Dolphin focuses on being only a file manager. This approach allows the optimization of the user interface for the task of file management.

2. *How can I get involved with the development of Dolphin?*

The easiest way to get involved with Dolphin is to subscribe to the developer mailing list [kfm-devel](#) and drop an email to the developer mailing list. Email what you can do, how much time you can devote etc., the developers will let you know what you can do in the project. If you wish to contribute to the documentation please email the [KDE Documentation Team](#) list.

3. *How can I submit bug reports?*

The official channel for submitting bug reports is via the KDE bug tracking system. The KDE bug tracker can be found at <https://bugs.kde.org>.

4. *How can I submit feature requests?*

The official channel for submitting feature requests is via the KDE bug tracking system. The KDE bug tracker can be found at <https://bugs.kde.org>.



## Chapter 6

# Credits and License

Dolphin

Program copyright 2006–2014 Peter Penz [peter.penz@gmx.at](mailto:peter.penz@gmx.at), Frank Reininghaus [frank78ac@googlemail.com](mailto:frank78ac@googlemail.com) and Emmanuel Pescosta [emmanuelpescosta099@gmail.com](mailto:emmanuelpescosta099@gmail.com)

Contributors:

- Cvetoslav Ludmiloff [ludmiloff@gmail.com](mailto:ludmiloff@gmail.com)
- Stefan Monov [logixoul@gmail.com](mailto:logixoul@gmail.com)
- Michael Austin [tuxedup@users.sourceforge.net](mailto:tuxedup@users.sourceforge.net)
- Orville Bennett [obennett@hartford.edu](mailto:obennett@hartford.edu)

Documentation copyright 2005 Peter Penz [peter.penz@gmx.at](mailto:peter.penz@gmx.at)

Documentation copyright 2006 Orville Bennett [obennett@hartford.edu](mailto:obennett@hartford.edu)

Documentation copyright 2006 Michael Austin [tuxedup@users.sourceforge.net](mailto:tuxedup@users.sourceforge.net)

Documentation copyright 2009 Frank Reininghaus [frank78ac@googlemail.com](mailto:frank78ac@googlemail.com)

This documentation is licensed under the terms of the [GNU Free Documentation License](#).

This program is licensed under the terms of the [GNU General Public License](#).