

# The Import Wizard Handbook

Laurent Montel



## The Import Wizard Handbook

## Contents

|  |          |
|--|----------|
| <b>1 Introduction</b>                    | <b>4</b> |
| 1.1 Detected Mail Applications . . . . . | 4        |
| 1.2 Manual Import . . . . .              | 5        |
| <b>2 Credits and License</b>             | <b>6</b> |

## 1 Introduction

Import Wizard allows to import emails, settings, addressbook and calendar data detected in your user account from the following mailers:

Trojitá, Evolution 1.x - 3.x, OS X Mail, Opera, Sylpheed, Thunderbird/Mozilla, The Bat!, Outlook Express, Balsa, Pegasus-Mail, and Claws Mail

Additionally you can use the manual import for KMail Archive, mbox (Unix, Evolution), KMail Maildirs, Icedove, Lotus Notes, Plain Text and Mailman Archives.

If no mail data are detected automatically then click on **Manual Selection** in the start window and use the [Manual Import](#) features.

You can start Import Wizard directly from the application launcher or from KMail with **Tools** → **Import Wizard** for automatic detection or from KMail with **File** → **Import Messages** for manual import.

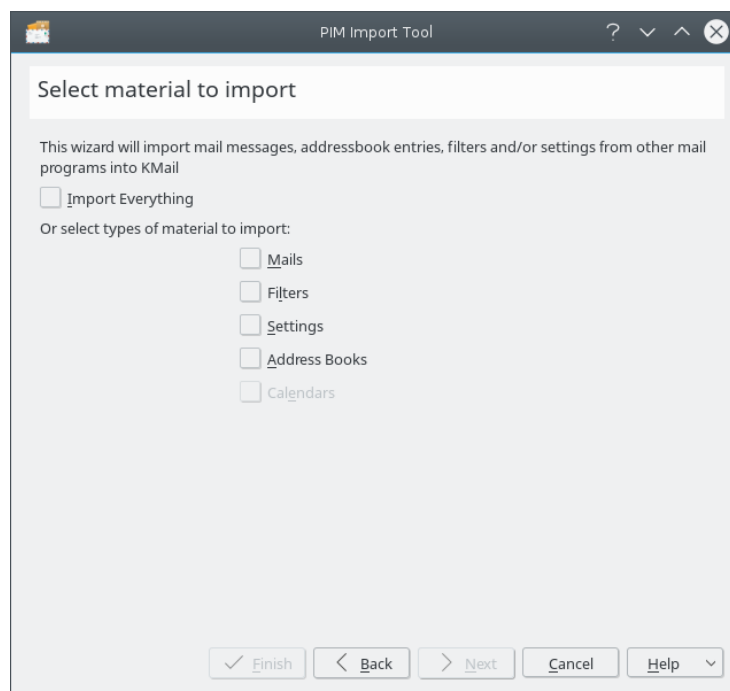
### NOTE

Close KMail before importing data. Some plugins will modify KMail's configuration file.

For information about other utilities to import mails please read the [PIM Data Exporter](#) handbook.

### 1.1 Detected Mail Applications

At startup the import wizard will detect all supported email applications, and list them for you in the window. Select the email application you want to import from, and click the **Next** button. The wizard will then ask if you want to import everything, or give you options to select which types of materials you want to import.



#### *Import Selection*

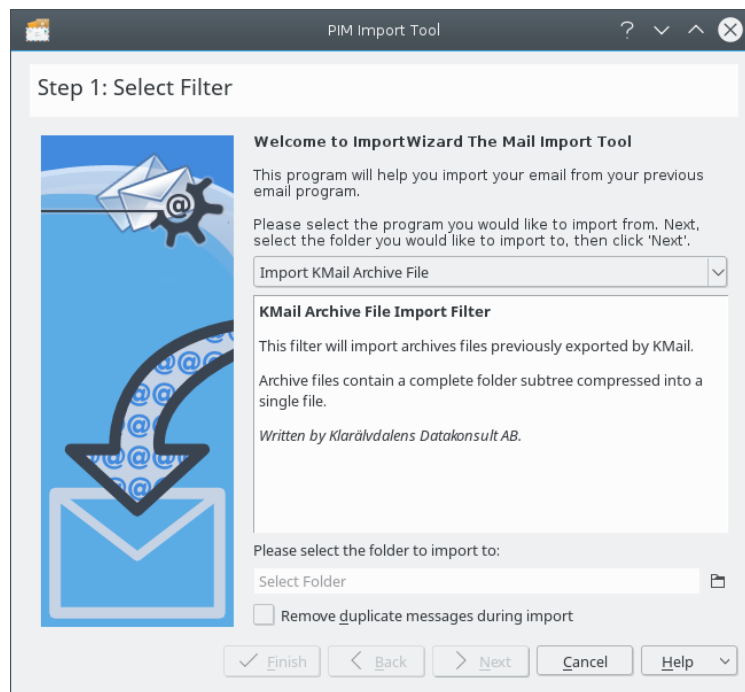
Depending on your selections in the materials to import screen, you will see one or more of the following screens:

## The Import Wizard Handbook

- To import mail messages, you need to select the folder you want your email messages to import into. Once selected, click the **Import Mails** button. Once the progress bar reaches 100%, click the **Next** button, or the **Finish** button, if this was your last material selection.
- To import mail filters, click the **Import Filters** button and it will import any filters it found, once finished click the **Next** button, or the **Finish** button, if this was your last material selection.
- To import settings, click the **Import Settings** button. The wizard will ask you some questions e.g. which folder to use for account folders that do not exist. The wizard will also create your identity. Once complete, click the **Next** button, or the **Finish** button, if this was your last material selection.
- To import address books or calendars, click the **Import address book** or **Import Calendar** button, and it will import all address books or calendars it finds. Once complete, click the **Next** button.

Click the **Finish** button to complete and exit the wizard. If at any time you wish to end the wizard, you can click the **Cancel** button.

### 1.2 Manual Import



#### NOTE

Please make sure that you compact your folders in the other email client.

Select your previous email program from the drop down box. The center text area of the dialog will update with special instructions (if applicable), and the known location of email message storage for that application. Follow these instructions, then select the folder you wish to import your messages to.

If you want to remove duplicate messages, check **Remove duplicate messages during import**. A file select dialog will pop up and you need to select the file/folder noted in the instructions. Click the **Next** button to complete the import. When the import is finished you can click the **Back** button to import from another application or the **Finish** button to exit.

## 2 Credits and License

Import Wizard

Program copyright 2013 Laurent Montel [montel@kde.org](mailto:montel@kde.org)

Section Manual Import is a modified copy of the KMailCVT handbook

Documentation Copyright (c) 2013 Laurent Montel [montel@kde.org](mailto:montel@kde.org) and Scarlett Clark [scarlett@scarlettgatelyclark.com](mailto:scarlett@scarlettgatelyclark.com)

This documentation is licensed under the terms of the [GNU Free Documentation License](#).

This program is licensed under the terms of the [GNU General Public License](#).