

# The KLinkStatus Handbook

Paulo Moura Guedes



# The KLinkStatus Handbook

# Contents

<b>1</b>	<b>Introduction</b>	<b>1</b>
<b>2</b>	<b>Using KLinkStatus</b>	<b>2</b>
2.1	More KLinkStatus features . . . . .	3
<b>3</b>	<b>Command Reference</b>	<b>4</b>
3.1	The main KLinkStatus window . . . . .	4
3.1.1	The File Menu . . . . .	4
3.1.2	The Help Menu . . . . .	4
<b>4</b>	<b>Credits and License</b>	<b>5</b>
<b>A</b>	<b>Installation</b>	<b>6</b>
A.1	How to obtain KLinkStatus . . . . .	6
A.2	Compilation and Installation . . . . .	6

### **Abstract**

KLinkStatus is a link checker for KDE.

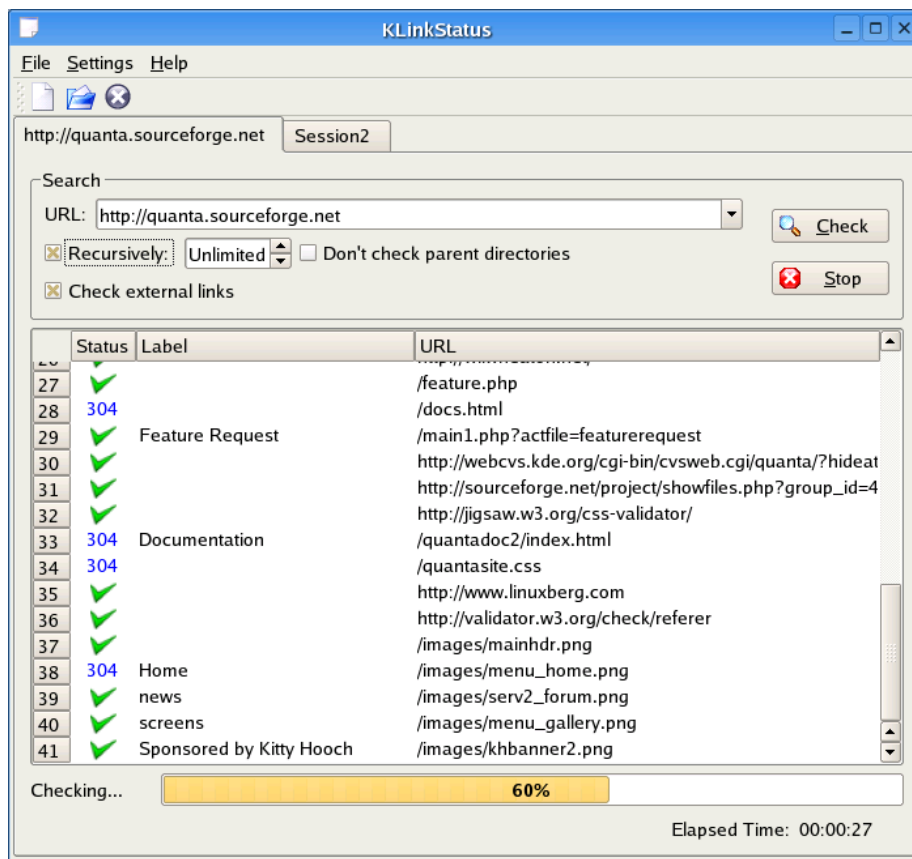
## Chapter 1

# Introduction

KLinkStatus is a link checker for KDE. It allows you to search internal and external links in your entire web site, just a single page and choose the depth to search. You can also check local files, ftp, fish, etc, as KLinkStatus uses KIO. For performance, links can be checked simultaneously. Please report any problems or feature requests to <http://linkstatus.paradigma.co.pt/bugs/>.

## Chapter 2

# Using KLinkStatus



## **2.1 More KLinkStatus features**

## Chapter 3

# Command Reference

### 3.1 The main KLinkStatus window

#### 3.1.1 The File Menu

**File** → **New Link Check (Ctrl+N)** Creates a new session, if none is empty

**File** → **Open URL (Ctrl+O)** Opens a URL

**File** → **Close Tab (Ctrl+W)** Close the current tab.

#### 3.1.2 The Help Menu

**Help** → **KLinkStatus Handbook (F1)** Invokes the KDE Help system starting at the KLinkStatus help pages. (this document).

**Help** → **What's This? (Shift+F1)** Changes the mouse cursor to a combination arrow and question mark. Clicking on items within KLinkStatus will open a help window (if one exists for the particular item) explaining the item's function.

**Help** → **Report Bug...** Opens the Bug report dialog where you can report a bug or request a 'wishlist' feature.

**Help** → **Switch Application Language...** Opens a dialog where you can edit the Primary language and Fallback language for this application.

**Help** → **About KLinkStatus** This will display version and author information.

**Help** → **About KDE** This displays the KDE version and other basic information.

## Chapter 4

# Credits and License

KLinkStatus

Program copyright 2004 Paulo Moura Guedes [pmg@netcabo.pt](mailto:pmg@netcabo.pt)

Documentation copyright 2004 Paulo Moura Guedes [pmg@netcabo.pt](mailto:pmg@netcabo.pt)

This documentation is licensed under the terms of the [GNU Free Documentation License](#).

This program is licensed under the terms of the [GNU General Public License](#).

# Appendix A

## Installation

### A.1 How to obtain KLinkStatus

<http://kde-apps.org>

### A.2 Compilation and Installation

For detailed information on how to compile and install KDE applications see [Building KDE4 From Source](#)

Since KDE uses **cmake** you should have no trouble compiling it. Should you run into problems please report them to the KDE mailing lists.