

# **The KDiskFree Handbook**

**Jonathan Singer and Michael Kropfberger**



# The KDiskFree Handbook

# Contents

<b>1</b>	<b>Introduction</b>	<b>1</b>
<b>2</b>	<b>Using KDiskFree</b>	<b>2</b>
2.1	Starting KDiskFree . . . . .	2
2.2	The Main window . . . . .	2
2.3	The KDiskFree menu bar . . . . .	3
2.3.1	The File Menu . . . . .	3
2.3.2	The Settings menu and dialog . . . . .	3
2.3.3	The Help menu . . . . .	4
<b>3</b>	<b>Credits and License</b>	<b>6</b>

### **Abstract**

KDiskFree displays available file devices, along with information about them.

## Chapter 1

# Introduction

KDiskFree displays the available file devices (hard drive partitions, floppy and CD drives, etc.) along with information on their capacity, free space, type and mount point. It also allows you to mount and unmount drives and view them in a file manager.

KDiskFree is similar to the KDE Control Center Disk-Free module , but takes up less screen space. It is useful if you want to keep a KDiskFree window available at all times.

## Chapter 2

# Using KDiskFree

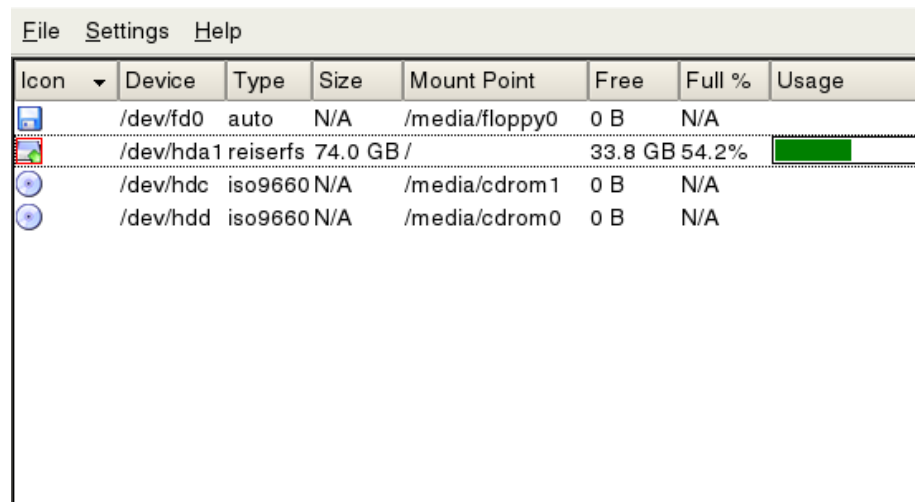
### 2.1 Starting KDiskFree

Type **kdf** at a command prompt or select Disk Free from the System group in the K menu. The standard Qt™ and KDE command options are available, and can be listed by entering **kdf --help** at the command prompt.






### 2.2 The Main window

The main KDiskFree window displays the available file devices.

Normally, the following pieces of information are included:



The screenshot shows the KDiskFree application window with a menu bar (File, Settings, Help) and a table of disk devices. The table has columns for Icon, Device, Type, Size, Mount Point, Free, Full %, and Usage. The /dev/hda1 device is highlighted with a green bar in the Usage column, indicating 54.2% usage.

Icon	Device	Type	Size	Mount Point	Free	Full %	Usage
	/dev/fd0	auto	N/A	/media/floppy0	0 B	N/A	
	/dev/hda1	reiserfs	74.0 GB	/	33.8 GB	54.2%	
	/dev/hdc	iso9660	N/A	/media/cdrom1	0 B	N/A	
	/dev/hdd	iso9660	N/A	/media/cdrom0	0 B	N/A	

## The KDiskFree Handbook

- an icon depicting the type of storage
- device name
- filesystem type
- total size
- mount point
- free disk space
- the percentage of space used as a number and as a graph.

In the picture above, four devices are shown: one reiserfs-formatted hard drive partition mounted at the file system root (/), two CD-ROM's, and a floppy drive.

Left clicking on the header of a particular column sorts the devices according to that variable. A second left click sorts in the opposite order.

Clicking on a row pops up a menu. If that device is not currently mounted, the Mount Device option is available. If the device is mounted, it can be unmounted by choosing Unmount Device. Selecting Open in File Manager opens a new window with a graphical view of the files on that device.

## 2.3 The KDiskFree menu bar

### 2.3.1 The File Menu

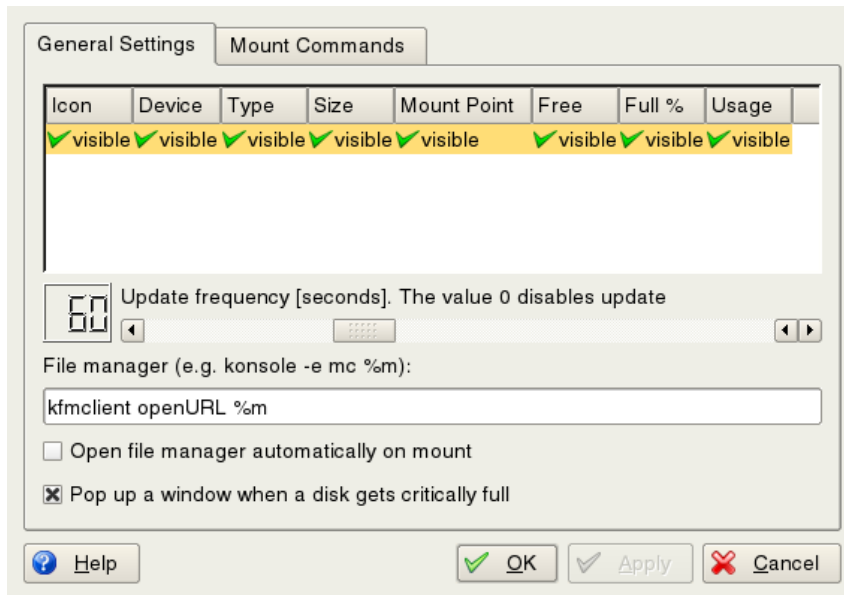
**File** → **Update** Immediately updates the display to reflect the current status

**File** → **Quit (Ctrl+Q)** Closes KDiskFree

### 2.3.2 The Settings menu and dialog

**Settings** → **Configure Shortcuts...** The standard KDE dialog for setting shortcuts.

**Settings** → **Configure KDiskFree...** Opens a configuration dialog.



This dialog has two tabbed windows, General Settings and Mount Commands

**General Settings** Click on the word visible or hidden to turn display of an data field on or off.

Change the update frequency by moving the slider. The value in the box on the left is the interval (in seconds) between updates of the KDiskFree display to reflect the current status.

The File Manager setting controls the command executed when the Open Filemanager popup menu item is selected.

There are also two check boxes. One controls if a file manager window will be automatically opened when a device is mounted. The other causes an alert window to pop up if a disk gets critically full.

**Mount Commands** Allows the user to specify the mount and unmount commands for a given device, as well as the icon used to represent it. More information on these commands can be found on the man page for mount (type **man** mount at the command prompt).

### 2.3.3 The Help menu

**Help** → **KDiskFree Handbook (F1)** Invokes the KDE Help system starting at the KDiskFree help pages. (this document).

**Help** → **What's This? (Shift+F1)** Changes the mouse cursor to a combination arrow and question mark. Clicking on items within KDiskFree will open a help window (if one exists for the particular item) explaining the item's function.

## The KDiskFree Handbook

**Help** → **Report Bug...** Opens the Bug report dialog where you can report a bug or request a 'wishlist' feature.

**Help** → **About KDiskFree** This will display version and author information.

**Help** → **About KDE** This displays the KDE version and other basic information.

## Chapter 3

# Credits and License

KDiskFree

Program Copyright (c) 1998-2000 Michael Kropfberger [michael.kropfberger@gmx.net](mailto:michael.kropfberger@gmx.net)

Documentation Copyright (c) 2000 Jonathan Singer [jsinger@leeta.net](mailto:jsinger@leeta.net)

This documentation is licensed under the terms of the [GNU Free Documentation License](#).

This program is licensed under the terms of the [GNU General Public License](#).