

**Andrew Lake**





# Contents

<b>1 Desktop Theme Details</b>	<b>4</b>
1.1 Quick start . . . . .	4
1.2 Creating a custom theme . . . . .	5
1.3 Naming a custom theme . . . . .	6
1.4 Removing a theme . . . . .	6
1.5 Exporting a theme to a file . . . . .	6

# 1 Desktop Theme Details

The KDE plasma desktop theme is made up of several components or items. This module allows you to customize your desktop Plasma theme and to replace theme items with items from other themes or from files.

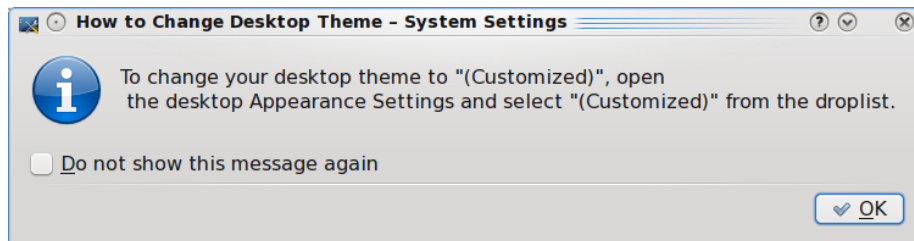
Desktop theme items consist in panel theme item, kickoff theme item,... all in default theme.

## 1.1 Quick start

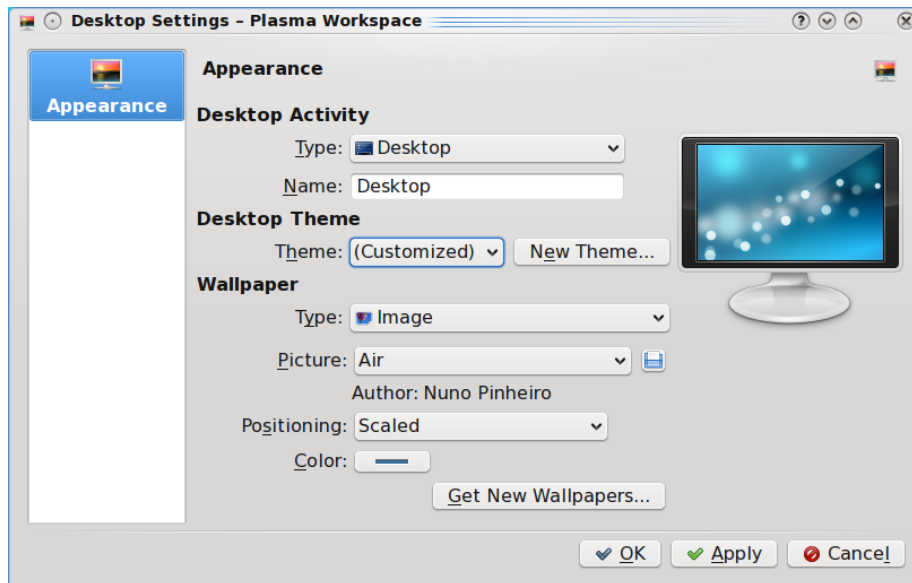
First download one or several themes you want to use to customize your desktop items by clicking the Get New Theme... button.

You can then start customizing each item you want to change with a new theme, for example you can have the panel in Glassified theme, ...

When you have finished, click the Apply button. You will then get an information message that tells you to enable the (Customized) theme on the Desktop settings dialog.



You then need to change the Desktop settings to (Customized) in order for the theme details to be applied to your desktop.



Click the Apply button on the dialog above to get the desktop settings applying your new choice.

## 1.2 Creating a custom theme

When the module is opened, it will show items from the current desktop theme. If you would like to start customizing with a different theme, select it from the drop box above the list of theme items. This theme from the drop box is the starting theme, the base for your new customized desktop theme.

In the list of items, for each item you would like to replace, select replacement item from the drop list for that item. You may select the corresponding item from another theme, or you may select a file. Plasma desktop theme items are svg files, except for the color scheme which is a KDE color scheme file.

Click Apply when all the changes have been made. This will create a new theme named (Customized) which you can select from the Appearance Settings dialog on the desktop.

### NOTE

The theme items listed are the most visible components of the plasma desktop theme. Other theme components are not listed. Your newly created theme will use these unlisted components from the theme that you selected at the start of creating the customized theme.

### **1.3 Naming a custom theme**

To provide a name for your customized theme, click on the More checkbox and enter the name of the theme. You may also provide your name (author), a theme version and a description of your theme. Click Apply when done.

### **1.4 Removing a theme**

Select the theme you would like to remove from the drop box above the list of theme items. Click on the More check box. Click the Remove Theme button to remove the selected theme.

### **1.5 Exporting a theme to a file**

You can share your newly customized theme with the community by exporting the theme to a file. Select your customized theme from the drop box above the list of theme items. Click on the More check box. Click the Export Theme to File.... Enter the name of the zip file to which the theme will be saved.