

The KGet Handbook

Jonathan E. Drews



The KGet Handbook

Contents

1	Introduction	1
2	Using KGet	2
2.1	KGet Tutorial	2
3	Special Configurations	4
3.1	Configuration of Auto-Disconnect	4
3.2	Downloading Into Designated Folders	4
4	Command Reference	6
4.1	The main KGet window	6
4.1.1	The File Menu	6
4.1.2	The View Menu	7
4.1.3	The Transfer Menu	7
4.1.4	The Options Menu	8
4.1.5	The Settings Menu	9
4.1.6	The Help Menu	9
5	Credits and License	10
A	Installation	11
A.1	How to obtain KGet	11
A.2	Compilation and Installation	11

Abstract

KGet allows you to group downloads. In some cases, KGet can resume these downloads even if you shutdown your computer before the downloads have completed.

Chapter 1

Introduction

To download a document or package, drag and drop the URL on to KGet.

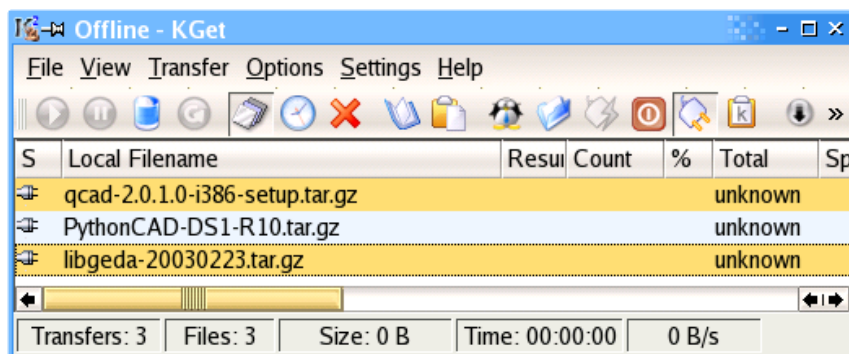
Chapter 2

Using KGet

2.1 KGet Tutorial

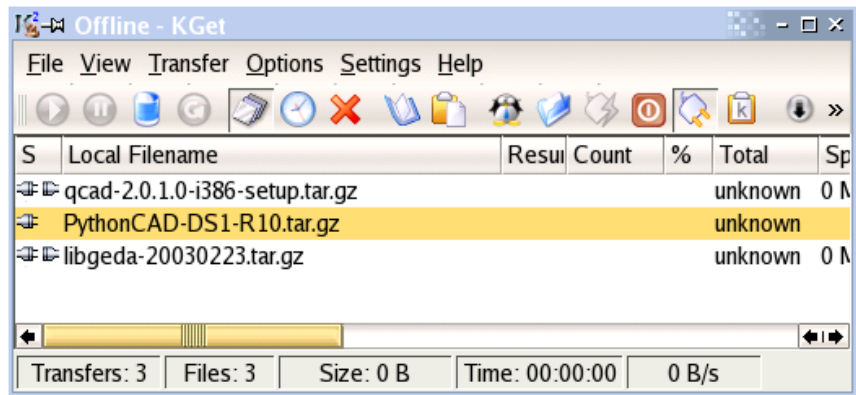
Here is a brief tutorial that uses some of the features of KGet. Below are three software packages that are to be downloaded. Suppose you want to download the middle one first and then the top and bottom ones second.

1. Place KGet in offline mode, by choosing the menu item Options → Offline Mode.
2. Click on the top entry with the left mouse button. Hold down the **Ctrl** key and click on the bottom entry. KGet should look similar to this:

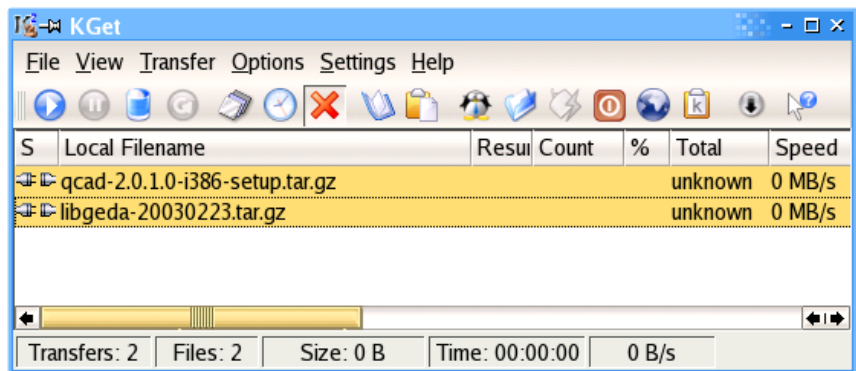


3. Click on the delay button to prevent these items from being downloaded.
4. Now click on the middle entry to highlight it. The top and bottom items will no longer be highlighted.

The KGet Handbook



- Put KGet back online by unchecking Options → Offline Mode and KGet will download the middle item.
- Click on the top item, hold down the **Shift** key and click on the bottom item. KGet should look like this:



NOTE

Holding down the **Ctrl** key allows you to select individual items; holding down the **Shift** key allows you to select consecutive items, while clicking with the left mouse button.

- Now click on the Queue icon or choose Transfer → Queue to download the two highlighted items.

Chapter 3

Special Configurations

3.1 Configuration of Auto-Disconnect

This feature is used for automatically disconnecting your modem once a download has been completed. To configure KGet for auto-disconnect do:

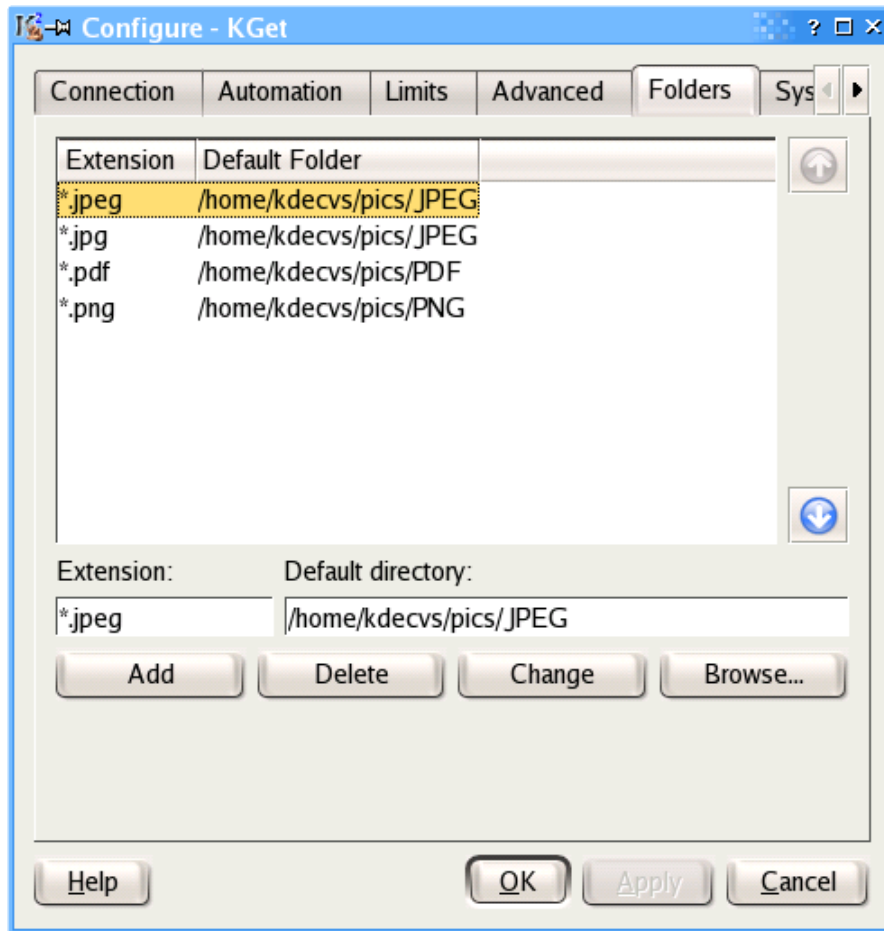
- Go to Options → Auto-Disconnect Mode to disconnect the modem. Usually this would be KPPP. Expert Mode must be on to use this feature.
- For SuSE® users the command `cinternet -i ppp0 -0` must be substituted for `kppp -k` in the Settings → Configure KGet... Automations menu.
- For Fedora Core users the command should be `/usr/sbin/usernetctl ppp0 down`

3.2 Downloading Into Designated Folders

To download JPEG files into a designated folder do:

- Go to Settings → Configure KGet... Folders menu.
- Enter the files you wish to download using the extensions `.jpg` and `.jpeg` as shown below:

The KGet Handbook



- Click on Apply and OK. When you download any *.jpeg files they will be stored in /home/kdecvs/pics/JPEG.

Chapter 4

Command Reference

4.1 The main KGet window

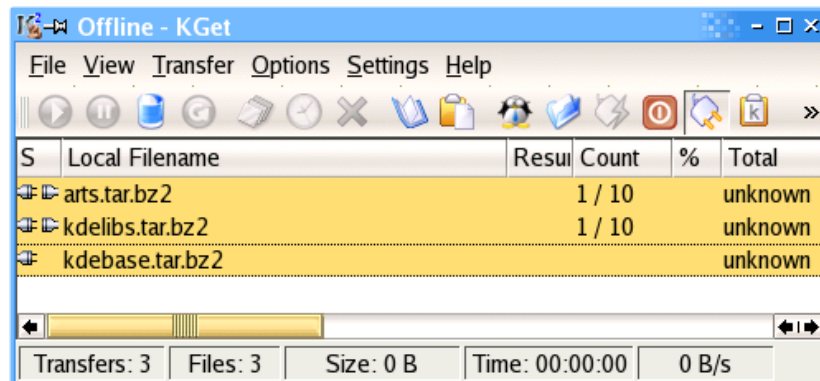
4.1.1 The File Menu

File → **Open (Ctrl+O)** Opens the transfer window where you can paste URL's.

File → **Paste (Ctrl+V)** Pastes the contents of the clipboard into the transfer window.

File → **Export Transfer List...** Opens a Save As window that allows you to save highlighted URL's to a .kget file. To use this feature:

- Place KGet in offline mode by clicking on the offline mode button in the toolbar or choosing Options → Offline Mode.
- Drag the URL's you wish to download on to KGet.
- Next click on the top entry so that it is highlighted.
- Hold down the **Shift** key and click on the bottom URL to highlight the entries like so:



The KGet Handbook

- Now click on **File → Export Transfer List...** and enter the name of the `.kget` file for your downloads.

This feature is used to save items that will be downloaded on a regular basis, such as the KDE snapshots above.

File → Import Transfer List... Loads `.kget` files that were created with **File → Export Transfer List...**

File → Import Text File... Imports URL's that are in text files. This is a powerful feature that allows you to parse URL's from text files and emails you may have received. It can discriminate between ordinary text and URL's, provided the URL begins at the left margin of the document. KGet will find these URL's and load them into its main window for you.

NOTE

This feature only ignores regular text when you have clicked on the Expert Mode icon. If the Expert Mode is not used then the text file must contain only URL's.

File → Quit (Ctrl+Q) Quits KGet

4.1.2 The View Menu

View → Show Log Window Opens a log window that shows the events that have occurred. This is useful for seeing what happened during a lengthy download. Here you can see if any packages were skipped or if a connection timed out.

4.1.3 The Transfer Menu

NOTE

In order for the entries in this menu to become active (not grayed out), you must highlight a download by clicking on the entry with the left mouse button.

Transfer → Copy URL to Clipboard This pastes a highlighted line into the KDE clipboard (Klipper).

Transfer → Open Individual Window Displays the selected download in its own window.

Transfer → Move To Beginning Moves a highlighted entry to the top of the download list.

NOTE

The topmost URL in KGet is downloaded first.

Transfer → **Move To End** Moves a highlighted entry to the bottom of the download list.

Transfer → **Resume** Resumes a download that has been paused.

Transfer → **Pause** Pauses a download that is running.

Transfer → **Delete** Deletes a highlighted item from the KGet main window.

Transfer → **Restart** Combines the functions of Resume and Pause in one button.

Transfer → **Queue** Causes the highlighted entries in KGet to begin downloading.

Transfer → **Timer** Delays the download of the highlighted items by one minute. This is useful if you need to pause the download to check email or go to a website.

Transfer → **Delay** Delays the download of the highlighted items indefinitely.

NOTE

Queue, Timer and Delay are mutually exclusive; only one of them may be selected at a time.

4.1.4 The Options Menu

Options → **Use Animations** Toggle use of animations to display KGet's state.

Options → **Use Sound** Toggle the use of sound to indicate events, e.g. a file being added to the download list, or a download completing.

Options → **Expert Mode** Turns off prompting.

Options → **Use-Last-Folder Mode** KGet will ignore the current folder settings and place all new transfers in the folder where the last transfer was placed.

Options → **Offline Mode** Toggles KGet from being online (ready to download) to offline. The offline mode is used when you want to copy URL's into KGet without them being downloaded immediately.

Options → **Auto-Disconnect Mode** Causes KGet to disconnect the modem. Usually this would be KPPP. Expert Mode must be on to use this feature.

You can find more information about the Auto-Disconnect Mode in [Section 3.1](#).

Options → **Auto Shutdown Mode** Closes KGet after all the downloads are completed. The Expert Mode must be turned on.

Options → **Auto-Paste Mode** Enable grabbing of files to download from the clipboard.

4.1.5 The Settings Menu

Settings → **Hide Statusbar** Hide the statusbar. The statusbar normally displays statistics about the currently downloading files.

Settings → **Drop Target** The drop target is a desktop icon that allows for hiding and restoring of KGet. This is used on a cluttered desktop when you want to periodically check the status of a download.

Settings → **Configure Shortcuts...** Display the the familiar KDE Keyboard Shortcut Configuration Dialog.

Settings → **Configure Toolbars** Display the the familiar KDE Toolbar Configuration Dialog.

Settings → **Configure KGet** Launch the main configuration dialog.

4.1.6 The Help Menu

Help → **KGet Handbook (F1)** Invokes the KDE Help system starting at the KGet help pages. (this document).

Help → **What's This? (Shift+F1)** Changes the mouse cursor to a combination arrow and question mark. Clicking on items within KGet will open a help window (if one exists for the particular item) explaining the item's function.

Help → **Report Bug...** Opens the Bug report dialog where you can report a bug or request a 'wishlist' feature.

Help → **About KGet** This will display version and author information.

Help → **About KDE** This displays the KDE version and other basic information.

Chapter 5

Credits and License

KGet

Program copyright 1998 Matej Moss

Contributors:

- Patrick Charbonnier pch@freeshell.org
- Carsten Pfeiffer pfeiffer@kde.org

Documentation Copyright (c) 2003 Jonathan Drews j.e.drews@att.net

This documentation is licensed under the terms of the [GNU Free Documentation License](#).

This program is licensed under the terms of the [GNU General Public License](#).

Appendix A

Installation

A.1 How to obtain KGet

KGet is part of the KDE project <http://www.kde.org/> .

KGet can be found in the kdenetwork package on <ftp://ftp.kde.org/pub/kde/> , the main FTP site of the KDE project.

A.2 Compilation and Installation

In order to compile and install KGet on your system, type the following in the base directory of the KGet distribution:

```
% ./configure
% make
% make install
```

Since KGet uses **autoconf** and **automake** you should have no trouble compiling it. Should you run into problems please report them to the KDE mailing lists.