

The KuickShow Handbook

Carsten Pfeiffer



The KuickShow Handbook

Contents

1	Introduction	1
2	Using KuickShow	2
2.1	More KuickShow features	3
3	The KuickShow Configuration Dialog	4
3.1	General Options	4
3.2	The Modifications Tab	5
3.3	The Slideshow Tab	6
3.4	The Shortcuts Tabs	6
4	Menu Reference	7
4.1	The File Menu	7
4.2	The Edit Menu	7
4.3	The View Menu	8
4.4	The Settings Menu	8
4.5	The Help Menu	8
5	Command Reference	9
5.1	The Image Window	9
5.2	The Browser Window	9
6	Credits and License	13
A	Installation	14
A.1	How to obtain KuickShow	14
A.2	Requirements	14
A.3	Compilation and Installation	14

List of Tables

5.2	Image Window Keyboard Shortcuts	10
5.4	Image Window Mouse Usage	11
5.6	Browser Window Keybindings	11
5.8	Browser Window Mouse Usage	12

Abstract

KuickShow is a comfortable image browser/viewer.

Chapter 1

Introduction

KuickShow is a comfortable image browser/viewer. It displays a filebrowser where you can select images which are then shown.

The following image formats are supported:

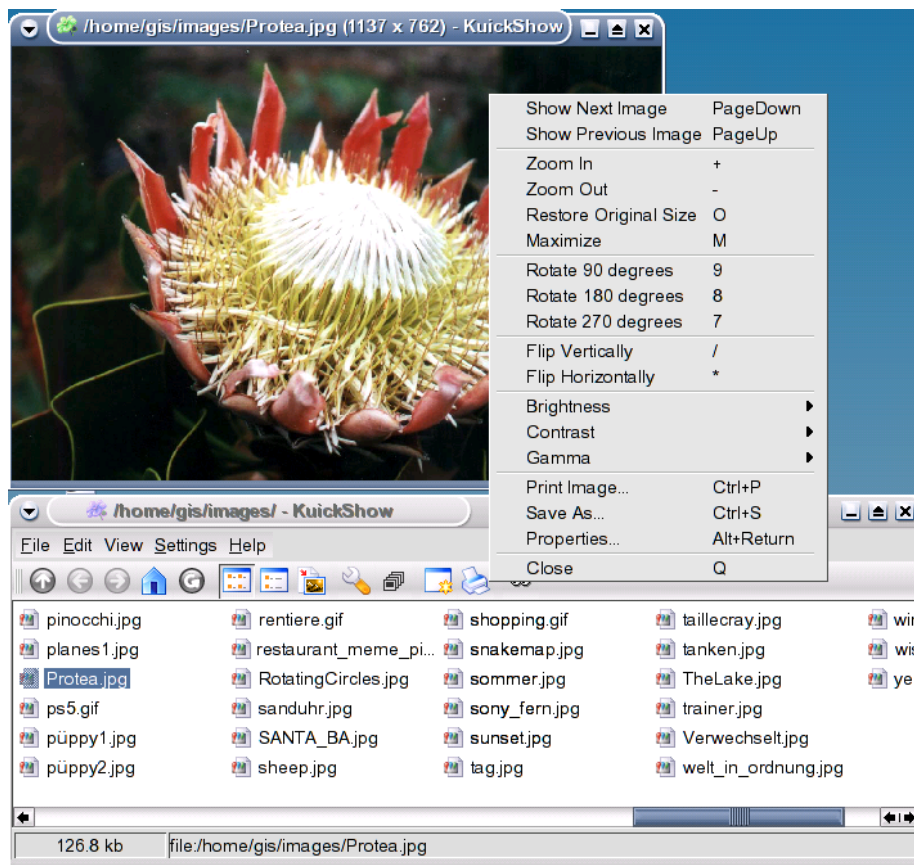
- jpg
- gif
- tiff
- png
- bmp
- psd
- xpm
- ppm
- pgm
- pbm
- pnm
- eim
- xcf

Images can be displayed either in their own window, as large as the image, or fullscreen.

Chapter 2

Using KuickShow

Using KuickShow is very simple. The file browser lists files, which you can select with a left mouse button click or the **Return** key.



2.1 More KuickShow features

The options dialog makes available more possibilities:

- Images can be automatically shrunk to fit onto the screen, if they are larger.
- You can configure whether images should show up in their own window, or always use the same window.
- You can set the delay time for a slide show.
- You can tell the browser which file types to show.
- You can tweak the speed/quality ratio

If you are looking for a certain file, just enter the first few characters of it's filename in the browser. A small edit window will pop up in the bottom right corner. When a matching file is found, it is highlighted. You can leave the edit window by pressing **Return** or **Esc**.

Chapter 3

The KuickShow Configuration Dialog

The KuickShow Configuration dialog contains 5 tabs. Three of them, [General](#), [Modifications](#) and [Slideshow](#) configure the operation of KuickShow, and the other two, [Viewer Shortcuts](#) and [Browser Shortcuts](#) allow you to personalize the shortcuts for the respective windows.

3.1 General Options

The General contains the options to configure and tune KuickShow.

Fullscreen mode If this is selected, images open in full screen mode. If the image is not large enough to fill the screen, the rest of the screen is filled with the background color selected below. The default is off.

Preload next image If this is selected, KuickShow will load the next image in the folder, while you are looking at the current one. This reduces the delay when you select the next image, and is especially useful for slide shows.

Remember last folder If this is selected, KuickShow saves the name of the last folder on exit. On next start KuickShow will open this folder in the browser window.

Background color: Click on the colored bar to select a background color. This is used to fill the screen in fullscreen mode, or the window, if you have resized it larger than the image.

Show only files with extension: You can configure KuickShow to only show you some of the file types it is capable of.

QUALITY/SPEED

Fast rendering Render things fast.

Dither in HiColor (15/16bit) modes

Dither in LowColor (<=8bit) modes

Use own color palette

Fast palette remapping

Maximum cache size (MB):

3.2 The Modifications Tab

Check Apply default image modifications to open an image with these modifications in KuickShow.

SCALING

Shrink image to screen size, if larger If this is selected, large images are displayed in maximized window. The default is on.

Shrink image to screen size, if smaler, up to factor: If this is selected, KuickShow increases the magnification of small images up to the selected factor.

GEOMETRY

Flip vertically Flips the image vertically.

Flip horizontally Flips the image horizontally.

Rotate image Rotates the image to 0, 90, 180 or 270 degrees.

ADJUSTMENTS

Brightness: Lightens/darkens the image.

Contrast: Adds/Removes contrast.

Gamma: More/less gamma.

A Preview of the Original and Modified image is displayed below this options.

3.3 The Slideshow Tab

Switch to full-screen Indicates if KuickShow should switch to full-screen mode when starting the slideshow.

Start with current image Indicates if the slideshow should start with the first image in the folder or with the image which is selected.

Delay between slides: The length of time between image changes during the slideshow. You can use the slider, type a new value into the field, or use the small arrows to increase or decrease the value. The default is 3 seconds.

Iterations (0 = infinite): The amount of iterations. If set to 0 it will loop until you abort the slideshow. You can use the slider, type a new value into the field, or use the small arrows to increase or decrease the value. The default is 1.

3.4 The Shortcuts Tabs

Change the shortcuts for the different modes of KuickShow in the Viewer Shortcuts and the Browser Shortcuts tabs.

Chapter 4

Menu Reference

4.1 The File Menu

File → Open (Ctrl+O) Opens a new image in KuickShow.

File → Show Image Displays the selected image in a new image window.

File → Show Image in Aktive Window Displays the selected image in the active image window.

File → Show Image in Fullscreen Mode Displays the selected image in fullscreen mode.

File → Start Slideshow (F2) Starts a slideshow of the images in the folder.

File → Print Image... (Ctrl+P) Prints the image.

File → Quit (Ctrl+Q) Quits KuickShow. If you have several images windows open, all of them are closed.

4.2 The Edit Menu

Edit → New Folder... (F10) Create a new folder.

Edit → Delete (Shift+Delete) Deletes the current file. You will be asked to confirm the action.

Edit → Properties (Alt+Return) Displays the properties of the current image file.

4.3 The View Menu

- View** → **Short View (F6)** If this option is selected, only the names of the files and folders will be shown.
Compare this to detailed view.
- View** → **Detailed View (F7)** If this option is selected, the names, sizes, dates, permissions, file owners and group ownerships are shown.
Compare this to short view.
- View** → **Show Hidden Files (F8)** This will toggle between revealing and hiding normally hidden files.
- View** → **Separate Folders (F12)** Use this option to toggle between a 2 pane view of the file system (one pane for the folders and one pane for the files) and a one pane view of the file system with folders and files.
- View** → **Large Icons** Display the image files in the folder with large icons. This item is only available in Short View mode.
- View** → **Small Icons** Display the image files in the folder with small icons. This item is only available in Short View mode.
- View** → **Thumbnail Previews** Display a preview of the images in the folder. This item is only available in Short View mode.
- View** → **Zoom Out (Ctrl+-)** Reduces the image size by ten percent. Again this refers to the *current* size of the image.
- View** → **Zoom In (Ctrl++)** Enlarges the image by ten percent. Notice that this refers to the *current* size of the picture.

4.4 The Settings Menu

- Settings** → **Configure KuickShow...** Opens a dialog for changing some options as described in the section chapter 3

4.5 The Help Menu

- Help** → **KuickShow Handbook (F1)** Invokes the KDE Help system starting at the KuickShow help pages. (this document).
- Help** → **Report Bug...** Opens the Bug report dialog where you can report a bug or request a 'wishlist' feature.
- Help** → **About KuickShow** This will display version and author information.
- Help** → **About KDE** This displays the KDE version and other basic information.

Chapter 5

Command Reference

5.1 The Image Window

All the shortcuts are configurable from the [Configuration Dialog](#).

5.2 The Browser Window

The KuickShow Handbook

Key	Action
Page Down	Load the next image
Page Up	Load the previous image
Home	Loads the first image
End	Loads the last image
+	Zooms into the image
-	Zooms out of the image
*	Flips the image horizontally
/	Flips the image vertically
7	Rotates 270° clockwise (which is also 90° counter-clockwise)
8	Rotates 90° clockwise
9	Rotates 180° clockwise
Arrow keys	Move the image (or rather, you, the viewer,) if it is larger than the screen
Return	Toggles between fullscreen and window mode
Space	Toggles the display of the browser
Esc	Closes the image window. This will close KuickShow entirely, if you don't have a browser window open.
B/Shift+B	Lightens/darkens the image
C/Shift+C	Adds/Removes contrast
G/Shift+G	More/less <i>gamma</i>
O	Shows the image in original size. This is only useful when you have enabled automatic scaling.
Enter	Redisplays the image with the default settings and size.
Ctrl+S	Opens the Save As dialog
Delete	Deletes the current image. You will be asked to confirm the request.
Shift+Delete	Deletes the current image without asking for confirmation
Alt+Return	Displays the properties of the image
F1	Opens the online help (this file)
Ctrl+W	Quits KuickShow

Table 5.2: Image Window Keyboard Shortcuts

The KuickShow Handbook

Mouse button	Action
Right click	Opens the context menu, with several options
Left drag	Moves the image, if it doesn't fit in the window.
Shift+Left drag	Marks a rectangle you can zoom into.
Left double click	Closes the current image

Table 5.4: Image Window Mouse Usage

Keybinding	Action
Return	Enters a folder, or opens an image window, depending on the item selected.
Page Down	Advances one page in the list of files
Page Up	Moves back up a page in the list of files
Home	Selects the first file or folder
End	Selects the last file or folder
Space	Toggles showing the browser, if an image window is open
any alpha-numeric character	Opens the edit field used for 'completion'. Enter the first characters of a filename to search for, and if found, the file will be selected.
Ctrl+G	'Go to' lets you enter a folder to go to.
Delete	Deletes the current file. You will be asked to confirm the action.
Shift+Delete	Deletes the current file without asking for confirmation.
F1	Opens the online help (this file)
Ctrl+Q	Quits KuickShow

Table 5.6: Browser Window Keybindings

The KuickShow Handbook

Mouse Usage	Action
Left click	Enter a folder, or select an image window.
Right click	Opens a context menu, with several options.
Double click	Loads the selected image or enters the selected folder

Table 5.8: Browser Window Mouse Usage

Chapter 6

Credits and License

KuickShow

Program copyright 1998-2002 Carsten Pfeiffer pfeiffer@kde.org

Documentation copyright 2001 Carsten Pfeiffer pfeiffer@kde.org

Converted to DocBook XML and extended by Lauri Watts lauri@kde.org

This documentation is licensed under the terms of the [GNU Free Documentation License](#).

This program is licensed under the terms of the [GNU General Public License](#).

Appendix A

Installation

A.1 How to obtain KuickShow

KuickShow is part of the KDE project <http://www.kde.org/> .

KuickShow can be found in the kdegraphics package on <ftp://ftp.kde.org/pub/kde/> , the main FTP site of the KDE project.

A.2 Requirements

To be written

A.3 Compilation and Installation

In order to compile and install KuickShow on your system, type the following in the base directory of the KuickShow distribution:

```
% ./configure
% make
% make install
```

Since KuickShow uses **autoconf** and **automake** you should have no trouble compiling it. Should you run into problems please report them to the KDE mailing lists.