

The KNetAttach Handbook

Orville Bennett



The KNetAttach Handbook

Contents

1	Introduction	1
2	Using KNetAttach	2
2.1	Adding network folders	2
3	KNetAttach Walkthrough	5
4	Credits and License	8

Abstract

KNetAttach is an application which makes it easier to integrate your network resources with your KDE Desktop.

Chapter 1

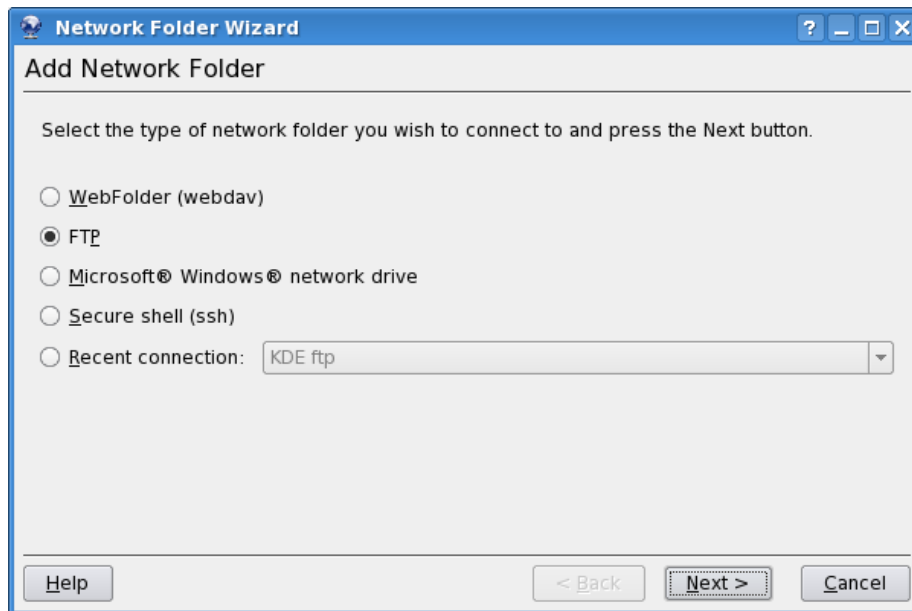
Introduction

The KNetAttach program, affectionately and hereafter known as the Network Folder Wizard, allows easy addition and integration of various network folders with your KDE desktop. Please report any problems or feature requests for it to the KDE bugs website.

Chapter 2

Using KNetAttach

As you will see in the screenshot below, the Network Folder Wizard currently allows you to add four types of network folders: WebDav, FTP, Microsoft® Windows® (Samba) network drives and SSH.

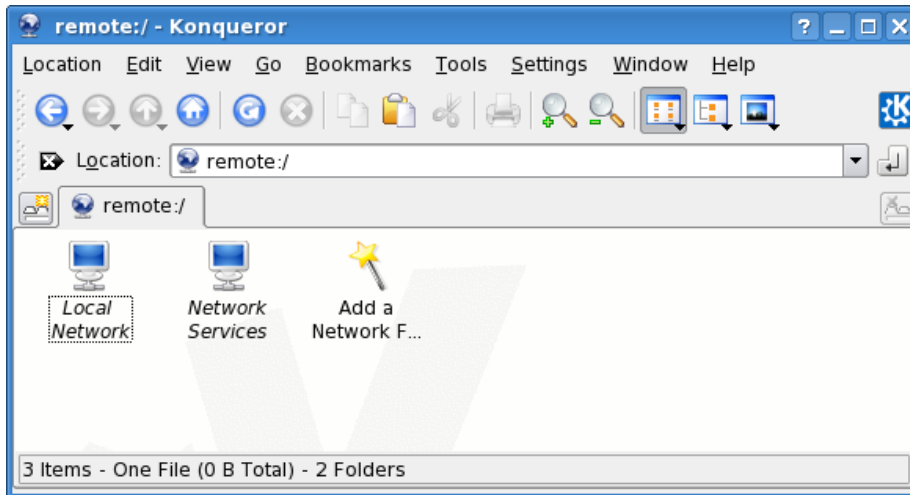


Network Folder Wizard main window

2.1 Adding network folders

Network folders show up in a special location of Konqueror called a *virtual folder*. This virtual folder is accessed by typing `remote: /` in Konqueror Location

bar. You will then be able to see any folders which have been previously added and you also will be able to use the wizard to add new ones.



The virtual folder with the Network Folder wizard

Speaking of wizards, the Network Folder Wizard aims at being very easy to use. After opening the wizard you must choose the type of network folder you would like to access. When you move on to the next screen you will just need to fill in the requested information. The final step is entering your username and login password for the network share you've chosen to access.

Below is a list of the information needed by the wizard to create the network folders. If an option is not available for a particular folder it does not have to be entered. e.g. The Samba folders do not require a Port entry.

Name: This is where you give a name to the network connection. It is limited only by your imagination (or alphabet).

Server: This is the address of the server you are attempting to add. It can be an IP address or domain name.

Port: Here you enter the port number you wish to connect to. The defaults are usually sufficient.

NOTE

Not available for Microsoft® Windows® (Samba) folders.

Folder: The path to the folder you wish to connect to should go here.

Create an icon for this remote folder If this box is checked an icon will be created allowing access through the remote:/ virtual folder. If it is not checked, a connection will be possible but it will not be accessible from remote:/.

The KNetAttach Handbook

NOTE

The Recent connection: option allows you to re-connect to the last network mount point you connected to using the wizard whether an icon is created or not.

Use encryption If checked the ability to make a secure connection will be enabled.

NOTE

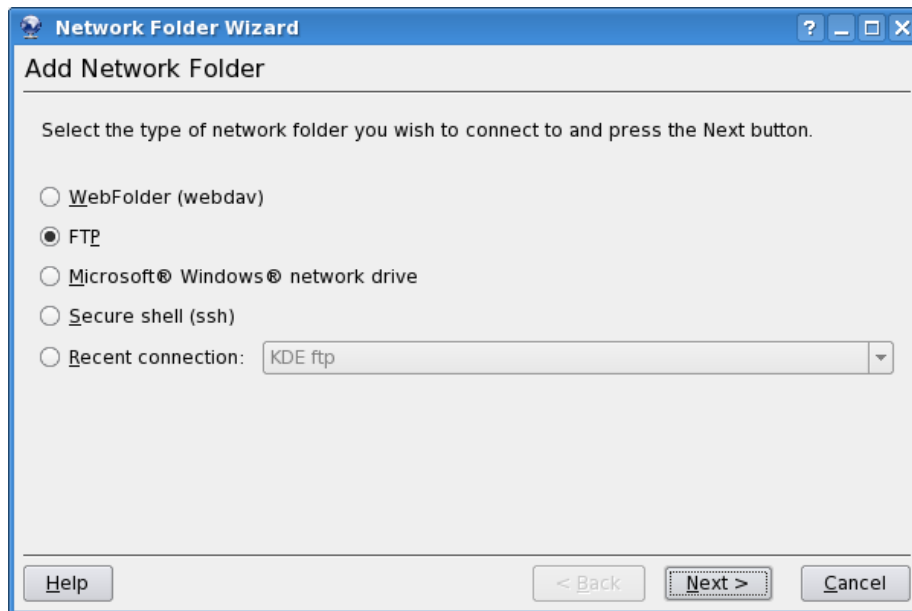
Available only for WebDav folders.

Chapter 3

KNetAttach Walkthrough

This will be a quick walkthrough of the Network Folder Wizard. Don't blink or you might miss it.

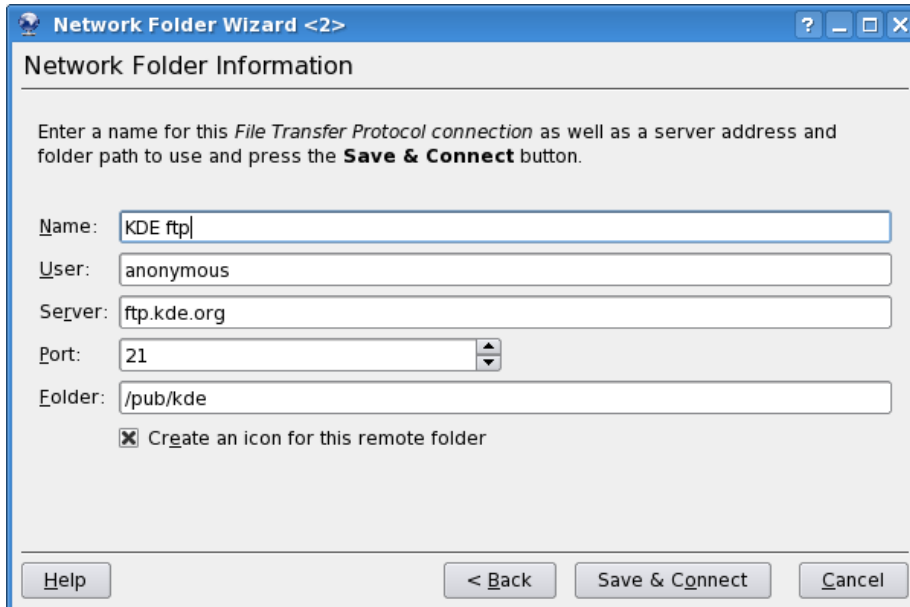
Below you see the main window of the Network Folder Wizard. It is here that we choose what type of folder we want to add or connect to. For the purposes of this walkthrough we will be using FTP. It contains most of the options you will encounter while using the wizard.



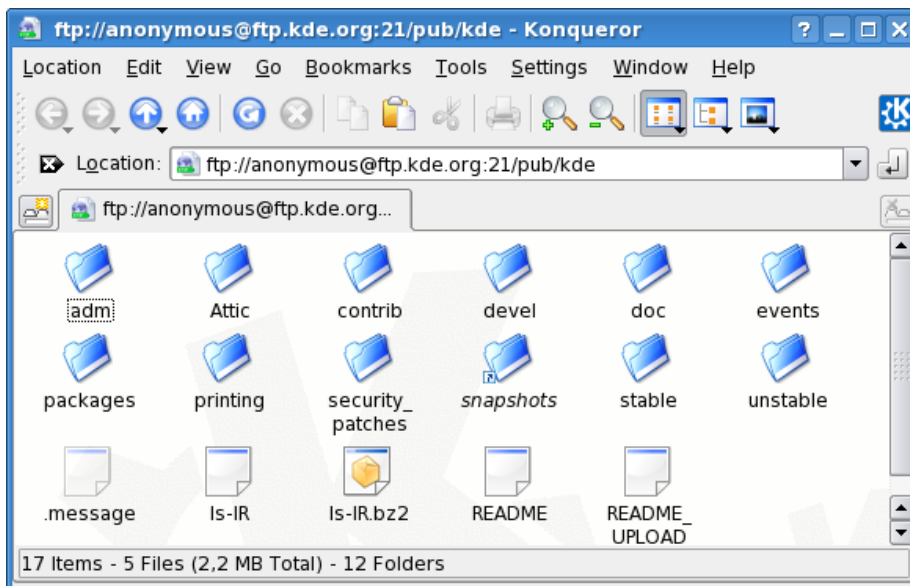
OK, so we (as in me) have chosen to add an FTP folder. Below you see an example of the type of information you will need to add for your particular FTP server. After filling it in we press Save & Connect and wait for the magic.

The KNetAttach Handbook

Oh yes, if your server requires validation of some kind you will be prompted at this point before being allowed to connect.

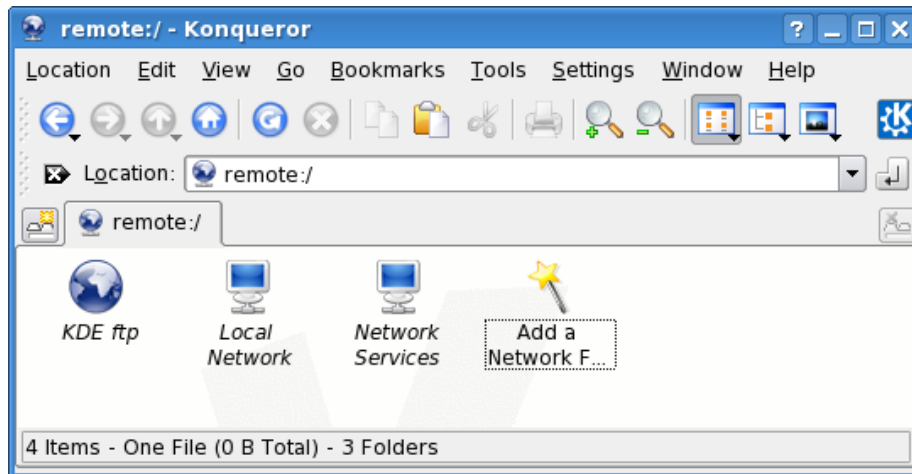


So now we are all connected now and able to navigate our newly added share. Joy!



To get back to our network folders all that is necessary is typing remote:/ in the Location: bar of Konqueror.

The KNetAttach Handbook



You can even add new folders from the same location by using the Add a Network Folder link. Well that brings us to the end of our walkthrough (told you it would be quick). I wish you the best of luck in your own network folder adventures ;-)

Chapter 4

Credits and License

KNetAttach

Program copyright 2004 George Staikos staikos@kde.org

Documentation Copyright (c) 2005 Orville Bennett obennett@hartford.edu

This documentation is licensed under the terms of the [GNU Free Documentation License](#).

This program is licensed under the terms of the [GNU General Public License](#).