

The KDE Control Center

Mike McBride



The KDE Control Center

Contents

1	The KDE Control Center	1
2	Using the KDE Control Center	2
2.1	Starting the KControl	2
2.2	The KDE Control Center Screen	2
2.3	The KDE Control Center Menus	3
2.3.1	File Menu	3
2.3.2	View Menu	4
2.3.3	Settings Menu	4
2.3.4	Help Menu	4
2.4	Exiting The KDE Control Center	5
2.5	Running Individual Modules	5
3	The KDE Control Center Modules	6
4	Credits and License	7

Abstract

This documentation describes KDE's control center.

Chapter 1

The KDE Control Center

The KDE Control Center (from now on referred to simply as ‘the control center’) provides you with a centralized and convenient way to configure all of your KDE settings.

The control center is made up of multiple modules. Each module is a separate application, but the control center organizes all of these programs into a convenient location.

TIP

Each control center module can be executed individually
See section entitled [Running individual control center modules](#) for more information.

The control center groups the configuration modules into categories, so they are easy to locate. Within each category, the control center shows all the modules in a list, so it is easier to find the right configuration module.

Chapter 2

Using the KDE Control Center

This next section details the use of the control center itself. For information on individual modules, please see [Control Center Modules](#)

2.1 Starting the KControl

The KDE Control Center can be started in 3 ways:

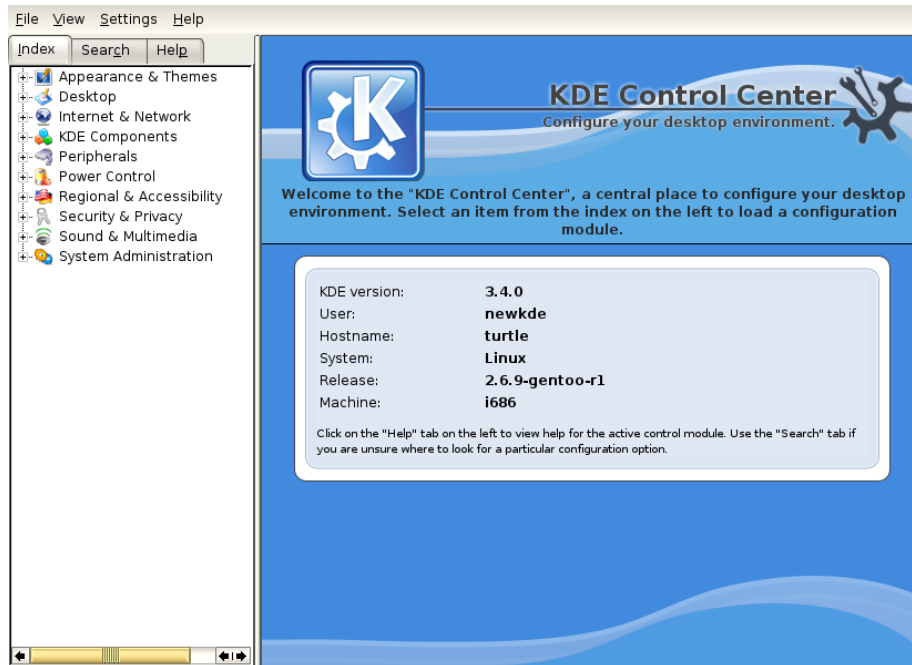
1. By selecting K Button → Control Center from the KDE Panel.
2. By pressing Alt+F2.
This will bring up a dialog box. Type **kcontrol**, and click Run.
3. You can type **kcontrol &** at any command prompt.

All three of these methods are equivalent, and produce the same result.

2.2 The KDE Control Center Screen

When you start the control center, you are presented with a window, which can be divided into 3 functional parts.

The KDE Control Center



The KDE Control Center Screen

Across the top is a menubar. The menubar will provide you with quick access to most of KDE Control Center's features. The menus are detailed in [The KDE Control Center Menus](#).

Along the left hand side, is a icon tree. Here you can choose which module to configure.

The main panel shows you some system information.

In this example, we are running KDE 3.4.0, we started KDE Control Center as user `newkde`, the computer is named `turtle`, it is a Linux® system running the 2.6 kernel, on a i686 processor.

2.3 The KDE Control Center Menus

This next section gives you a brief description of what each menu item does.

2.3.1 File Menu

The File menu has a single entry.

File → Quit (Ctrl+Q) Closes the control center.

2.3.2 View Menu

These options determine how the module selection looks and behaves.

View → **Mode** Determines whether to use Tree view, or Icon view for your modules.

With Tree view, each submenu appears as an indented list.

With Icon view, when you click on a category, the categories disappear and are replaced with the module list. You then use the Back button to return to the categories.

View → **Icon size** Using this option, you can choose Small, Medium, or Large icons to select your modules.

NOTE

This menu item only controls the icon size if you are in Icon View. If you choose Tree View, the Small icon size will be used, no matter what size was previously selected in Icon View.

2.3.3 Settings Menu

The Settings menu has a single entry, Settings → Configure Shortcuts.... From here you can map keyboard shortcuts to the other menu options.

2.3.4 Help Menu

Help → **this application Handbook (F1)** Invokes the KDE Help system starting at the this application help pages. (this document).

Help → **What's This? (Shift+F1)** Changes the mouse cursor to a combination arrow and question mark. Clicking on items within this application will open a help window (if one exists for the particular item) explaining the item's function.

Help → **Report Bug...** Opens the Bug report dialog where you can report a bug or request a 'wishlist' feature.

Help → **About this application** This will display version and author information.

Help → **About KDE** This displays the KDE version and other basic information.

2.4 Exiting The KDE Control Center

You can exit the control center one of three ways:

- Select File → Quit from the menu bar.
- Type Ctrl+Q on the keyboard.
- Click on the Close button on the frame surrounding the control center.

2.5 Running Individual Modules

You can run individual modules without running `kcontrol` using the command `kcmshell` from Konsole. Type `kcmshell--list` to see a list of the available KDE Control Center modules. You can also access individual KDE Control Center modules through adding the Preferences button to either Kicker or the K menu through their respective configuration dialogs.

Chapter 3

The KDE Control Center Modules

In order to make it as easy as possible, the KDE Control Center has organized similar options into groups. Each group is called a module. When you click on the name of a module in the left window, you will be presented with the options of the module on the right.

Each module will have some or all of the following buttons:

Help This button will give you help specific to the current module. The button will show you a short summary help page in the left window. At the bottom of that window, you can click on a link to get more detailed help.

Defaults This button will restore this module to its default values. You must click OK to save the options.

Apply Clicking this button will save all changes to KDE. If you have changed anything, clicking Apply will cause the changes to take effect.

Reset This button will 'Reset' the module to the previous settings.

NOTE

You must save the options of the current module using Apply before you can change to a different module.

If you try to change without saving your options, you will be asked if you want to save your changes, or discard them.

Chapter 4

Credits and License

KControl

Program copyright 1997-2001 The KDE Control Center Developers

Contributors:

- Matthias Hölzer-Klүpfel hoelzer@kde.org
- Matthias Elter elter@kde.org

Documentation copyright 2000 Mike McBride© mpmcbride7@yahoo.com

Contributors:

- Paul Campbell paul@taniwha.com
- Helge Deller deller@kde.org
- Mark Donohoe
- Pat Dowler
- Duncan Haldane duncan@kde.org
- Steffen Hansen stefh@mip.ou.dk
- Matthias Hölzer-Klүpfel hoelzer@kde.org
- Martin R. Jones mjones@kde.org
- Jost Schenck jost@schenck.de
- Jonathan Singer jsinger@leeta.net
- Thomas Tanghus tanghus@earthling.net
- Krishna Tateneni tateneni@pluto.njcc.com
- Ellis Whitehead ewhitehe@uni-freiburg.de

This documentation is licensed under the terms of the [GNU Free Documentation License](#).

This program is licensed under the terms of the [GNU General Public License](#).