

The KUser Handbook

Matt Johnston, Lauri Watts, and Jonathan Singer



The KUser Handbook

Contents

1	Getting Started	1
2	Usage	2
2.1	Main Window	2
2.2	User Properties Dialog	3
2.2.1	User Info Tab	3
2.2.2	Password Management Tab	3
2.2.3	Quota Tab	4
2.2.4	Groups Tab	4
2.3	Group Properties	4
2.4	Adding, Editing and Deleting Users or Groups	4
3	Customizing KUser	5
3.1	Edit user creation defaults	5
4	Credits and License	6

Abstract

This documentation describes KUser version 1.0. This program allows you to manage users and groups on your system.

Chapter 1

Getting Started

This is a short introduction to KUser. For more detailed information, see [Usage](#).
Actually, you do not need to do anything to begin using KUser except [configuration](#).

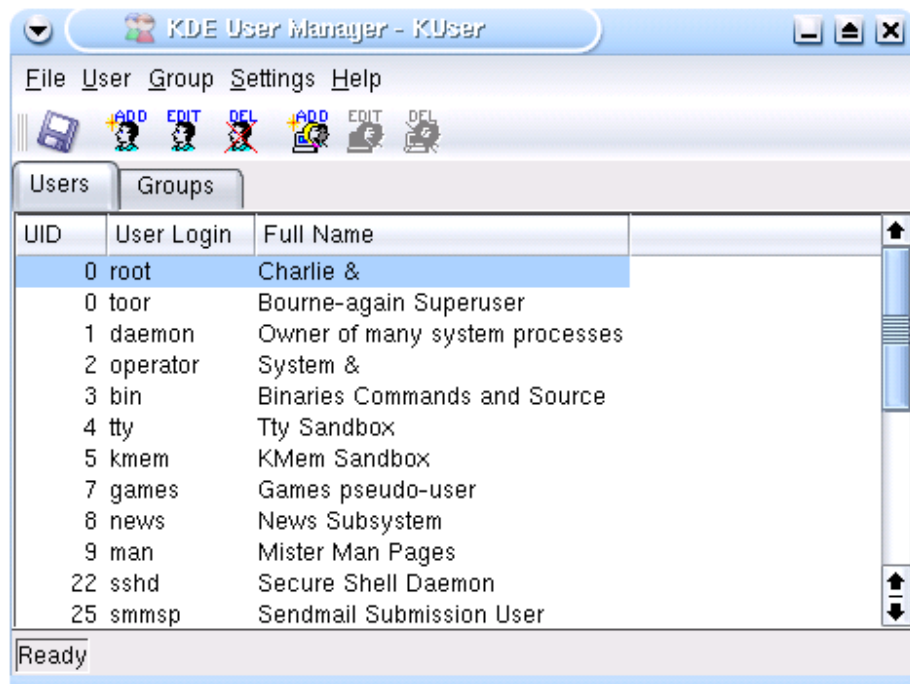
When you have made the changes you want, you must Save them for them to take effect. Either choose the Toolbar icon, or use the File menu.

Chapter 2

Usage

2.1 Main Window

KUser is a very simple application. In the main window you can see two tabs: the list of users and the list of groups. To edit a user or a group, just double click on it. The user or group properties dialog will appear.



2.2 User Properties Dialog

The user properties dialog has various tabs.

The number of tabs depends on the type of the user storage system and whether quotas are being used. Additional tabs will appear if you have shadow passwords, or any other similar things such as `/etc/master.passwd` in BSD flavor Unices.

2.2.1 User Info Tab

In the User Info tab you can modify:

- User Id
- Full Name
- Login Shell (the list of login shells is taken from the `/etc/shells` file)
- Home Folder
- Two office locations
- Address
- Password

2.2.2 Password Management Tab

The Password Management tab will appear if you have shadow passwords, or any other similar things such as `/etc/master.passwd` in BSD flavor Unices.

In the Extended Info tab you can modify parameters related to extended account control:

- Minimum number of days between password changes
- Number of days after which a password expires if it hasn't been changed
- Number of days before expiration the user will be warned
- Whether and when an account will be disabled if the password expires
- A set date when the account expires
- Class (on BSD systems)

The date of the last password change is displayed near the top of the dialog.

2.2.3 Quota Tab

You will probably see the Quota tab only if you have at least one mounted volume with quota enabled and a quota file present. There you may modify all quota related parameters:

- File Soft Quota
- File Hard Quota
- File Time Limit (Grace Period)
- iNode Soft Quota
- iNode Hard Quota
- iNode Time Limit (Grace Period)

All these parameters can be changed for each filesystem that has user quota enabled. Filesystems can be changed using the Quota Filesystem box.

2.2.4 Groups Tab

The Groups tab contains all the information about the selected user's participation in groups. The primary group to which the user belongs is set in the Primary Group box. The user can be assigned to additional groups by checking them in the large box.

2.3 Group Properties

The Group Properties dialog contains a list of all users. Check the boxes for each user to be assigned to the selected group.

2.4 Adding, Editing and Deleting Users or Groups

To add a user or group to the system, either choose Add from the User or Group menu, or click the relevant Add button on the toolbar. The selected user or group can also be edited or deleted in the same way.

Chapter 3

Customizing KUser

3.1 Edit user creation defaults

To edit the user creation defaults you can use the Edit defaults dialog, which is accessible via the menu Settings → Configure KUser. There you may change the defaults that are used when creating a new user: Shell and Home Folder (or home folders volume). You can choose whether to make a home folder on 'create' or not, and to copy a skeleton (standard configuration files) to the home folder or not. You can also enable User Private Group mechanism, which creates a new personal group with the creation of a new user, and removes the personal group when the user is removed.

The skeleton files for new users can be specified in the Sources tab.

Chapter 4

Credits and License

KUser

Program copyright 1997-2000 Denis Pershin dyp@inetlab.com

Documentation copyright 1997-2000 Denis Pershin dyp@inetlab.com

Documentation copyright 2000 Matt Johnston mattj@flashmail.com

This documentation is licensed under the terms of the [GNU Free Documentation License](#).

This program is licensed under the terms of the [GNU General Public License](#).