



Contents

1	The Image Gallery Plugin	4
1.1	Using the Image Gallery Plugin	4
2	Page Look	4
3	Folders	5
4	Thumbnails	6
4.1	Credits	7

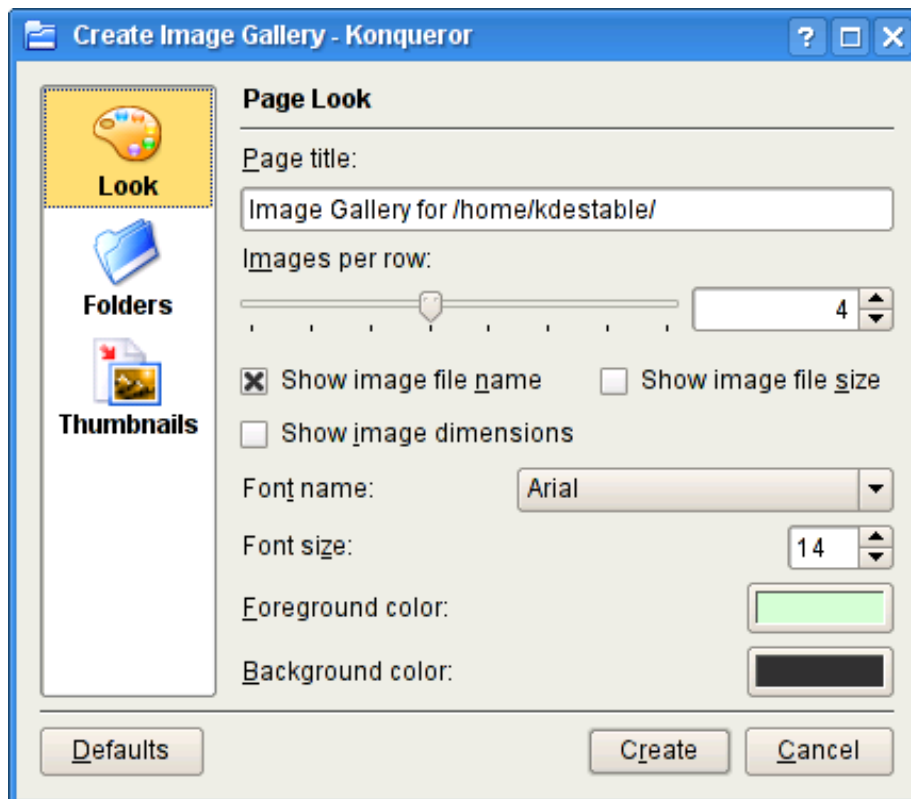
1 The Image Gallery Plugin

1.1 Using the Image Gallery Plugin

The Image Gallery plugin can be accessed in the Konqueror menubar under Tools → Create Image Gallery, or with Ctrl-I.

When you start the Image Gallery plugin a dialog opens allowing you to adjust the way the gallery is created.

2 Page Look



The Look dialog is for adjusting the appearance of the gallery page.

Page title The Page title option has a text input box for changing the title of the image gallery page.

Images per row The Images per row option has a slider and a spin box for adjusting the number of thumbnails that are in a single row in the gallery.

Show image file name The Show image file name check box allows you to turn on or off the use of the filenames below the gallery thumbnails.

Show image file size The Show image filesize check box allows you to turn on or off the use of the file sizes below the gallery thumbnails.

Show image dimensions The Show image dimensions check box allows you to turn on or off the use of the image dimensions in pixels below the gallery thumbnails.

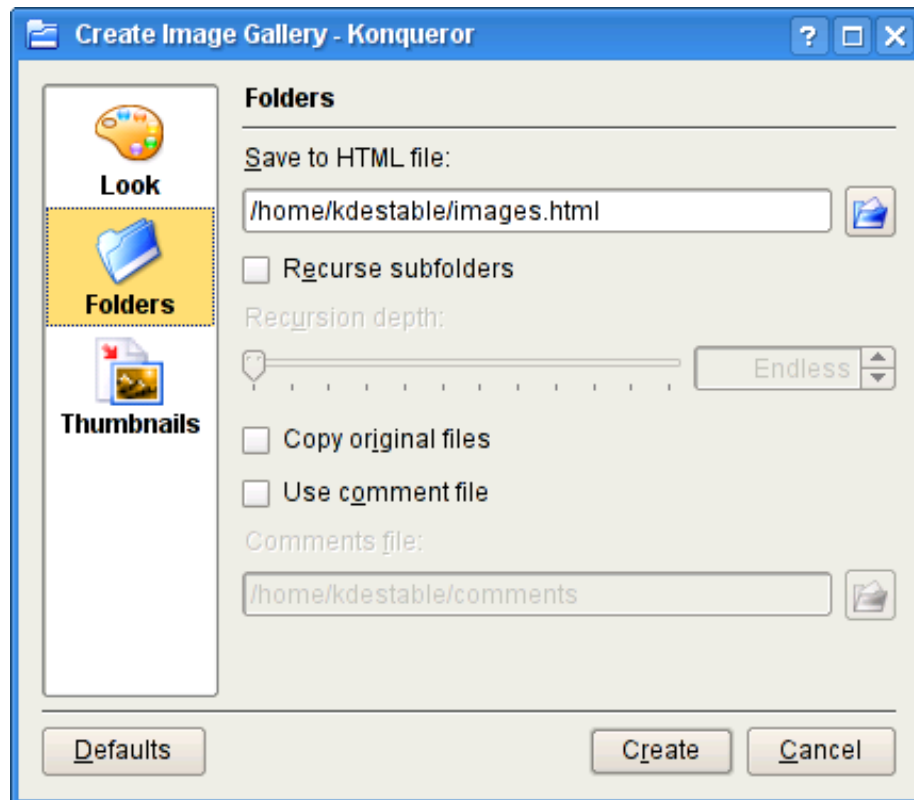
Font name The Font name combo box provides you with a choice of which font to use in creating the gallery.

Font size The Font size spin box is for changing the size of the font you selected.

Foreground color The Foreground color option has a selector for choosing the foreground color of the gallery, this includes the text areas.

Background color The Background color option has a selector for choosing the background color of the gallery.

3 Folders



The Folders dialog is used for choosing where to save the gallery. This dialog is also used to configure what folders are used.

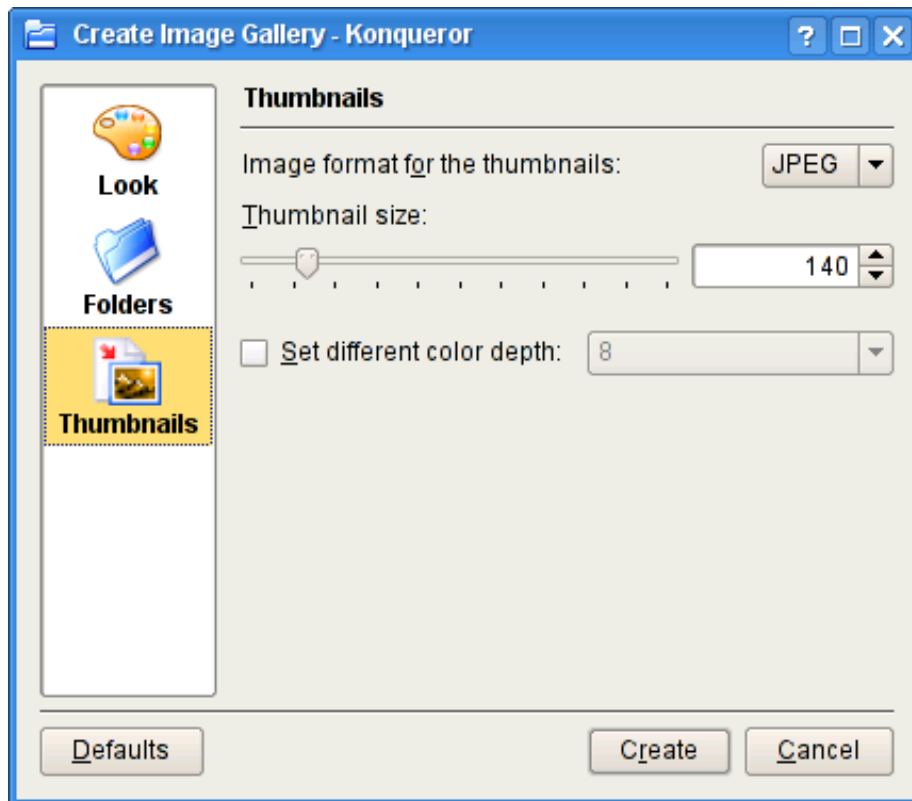
Save to HTML file The Save to file selector decides where you want to save you image gallery html page.

Recurse subfolders The Recurse subfolders check box enables recursing of subdirectories. If the check box is enabled, a slider and spin box are enabled to select the recursion depth.

Copy original files The Copy original files check box creates an image folder storing copies of the original images used in the gallery.

Use comment file The use comment file check box enables a file selector to choose a comments file to use with your gallery.

4 Thumbnails



The thumbnails dialog is used for adjusting the properties of the thumbnails in the gallery.

Image format for the thumbnails The image format combo box allows you to choose what format is used for the thumbnail images.

Thumbnail size The thumbnail size option provides a slider and spin box for adjusting the size of the thumbnails used in the gallery.

Set different color depth The set different color depth check box enables a combo box for selecting a different color depth for the thumbnails if you wish to use a color depth other than the depth used in the original image.

4.1 Credits

Copyright (c) 2001,2003 Lukas Tinkl lukas@kde.org

Andreas Schlapbach schlpbch@iam.unibe.ch

Documentation Copyright 2004 Mike Diehl madpenguin8@yahoo.com