

Gwenview User Manual

Aurélien Gâteau and Christopher Martin



Gwenview User Manual

Contents

1	Introduction	1
1.1	What is Gwenview	1
2	The interface	2
2.1	Browse and View modes	2
3	External tools	4
4	Tips	6
4.1	Using the mouse	6
4.1.1	Panning with the mouse	6
4.1.2	Zooming with the mouse	6
4.1.3	Browsing with the mouse	6
4.2	Key bindings	7
4.3	Docked windows	7

Abstract

Gwenview is an image viewer for KDE.

Chapter 1

Introduction

1.1 What is Gwenview

Gwenview is a fast and easy to use image viewer for KDE.

It features a folder tree window and a file list window to provide easy navigation of your file hierarchy. Gwenview uses docked windows, so you can alter its layout any way you wish. You can also browse your images in full-screen mode, or embedded within Konqueror using the Image View and Kpart.

Image loading is handled by the Qt library, so Gwenview supports all image formats your Qt installation supports. Gwenview correctly displays images with an alpha channel as well as animations.

Gwenview supports the displaying and editing of EXIF comments in JPEG images. Lossless JPEG transforms such as rotations and mirroring are also supported.

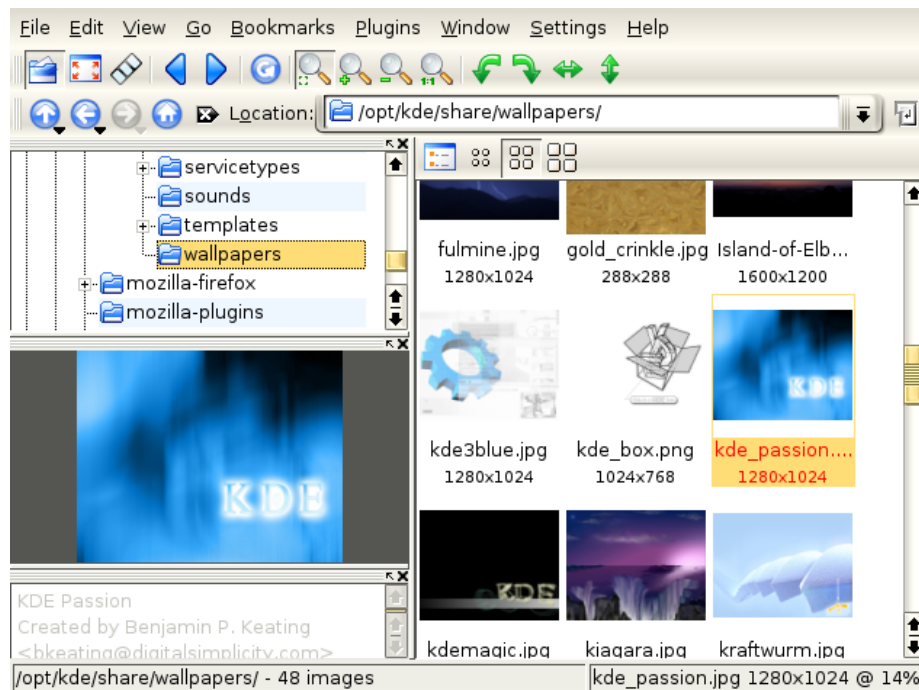
Chapter 2

The interface

2.1 Browse and View modes

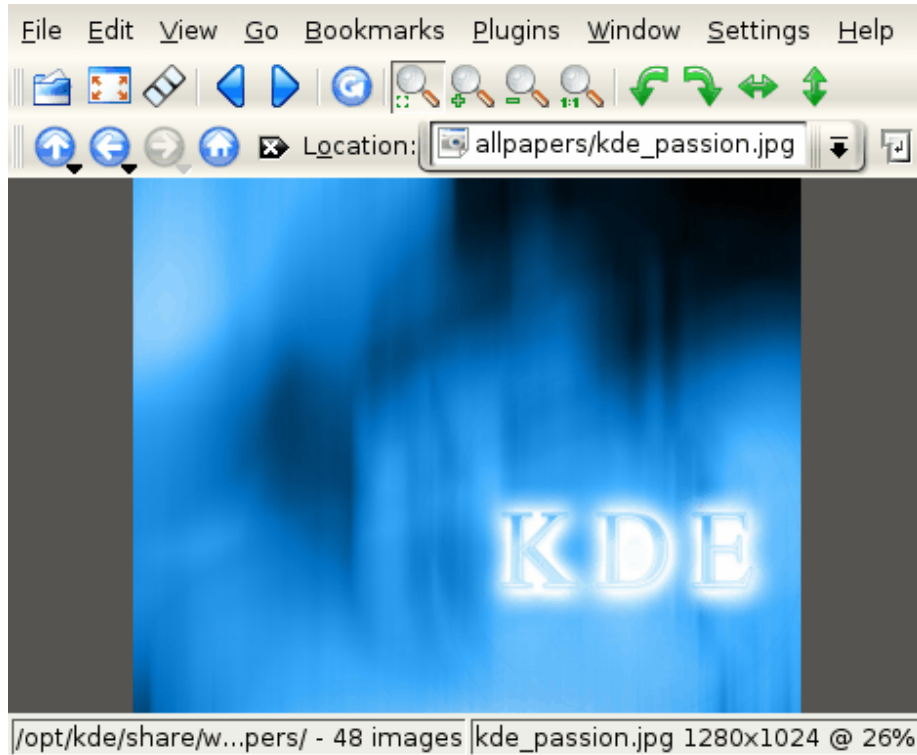
By default, Gwenview opens in Browse mode.

In this mode you can easily navigate through your files and folders. As you can see on the screenshot, the preview window shows the current image as well as any embedded image comment.



Gwenview User Manual

From the Browse mode, unchecking View → Browse (**Ctrl+Return**) will put you in View mode, where the image takes all the space of the window.



TIP

You can start directly in View mode by starting Gwenview with an image as an argument.

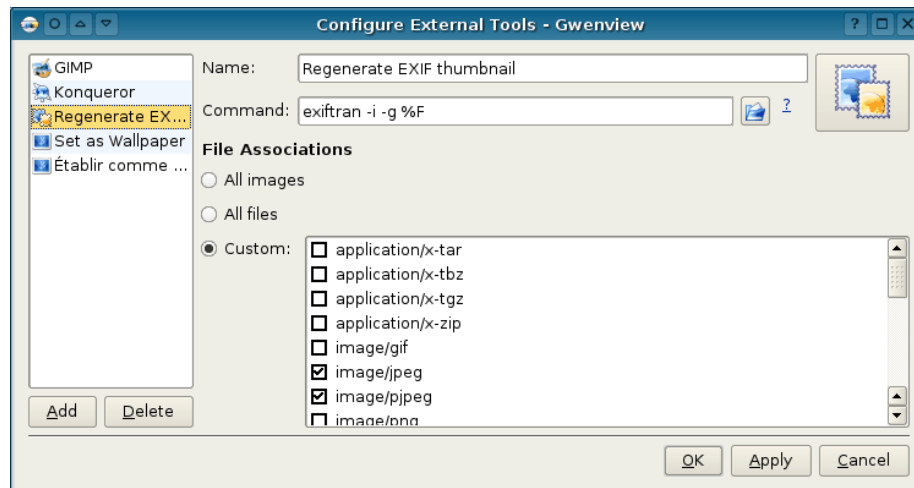
Chapter 3

External tools

You can easily extend Gwenview by defining external tools. These tools are accessible from the contextual popup menu which appears when right-clicking on a thumbnail or in the image view. Look in the External Tools entry.

Gwenview comes with a few predefined external tools, but it's very easy to add more through the Configure External Tools dialog. You can open it from Settings → Configure External Tools....

Here is how it looks:



In this example, I defined an external tool which will call Exiftran to regenerate the EXIF tags for JPEG images. Here is a more detailed description of its definition:

- The Name: field contains the description of your tool, has it will appear in the menu.

Gwenview User Manual

- The Command: field contains the command which will be run when this tool is invoked. Click on the little question mark on the right of the field to get a list of the keywords you can use in this field. These keywords will get expanded to the image files.
- The button on the right lets you associate an icon with your tool.
- The File Associations group indicates what type of files this tool can work with. Your tool will only appear in the External Tools menu if the selected files are of the correct type. In my example, this tool is only valid with JPEG images, so I choose Custom:, then image/jpeg and image/pjpeg.

TIP

You can find other external tool examples from [Gwenview web site](#).

Chapter 4

Tips

4.1 Using the mouse

4.1.1 Panning with the mouse

- Holding down the left mouse button on an image allows you to scroll the image.
- The mouse wheel will scroll the image up and down.

4.1.2 Zooming with the mouse

- Clicking the middle mouse button will toggle the auto zoom on/off.
- Hold down the Control key, then either use the mouse wheel to zoom in and out or left click to zoom in and right click to zoom out.
- The mouse wheel, used while holding down the Alt key, will scroll the image horizontally.

4.1.3 Browsing with the mouse

- Double-clicking on an image toggles Browse mode.
- By default, the mouse wheel will scroll the image up and down. But, this can be configured to browse the images in the current directory instead.
- Hold down the left mouse button over an image, then click the right button to go to the next image.
Hold down the right button, then click the left button to load the previous image.

4.2 Key bindings

Gwenview comes with a range of keyboard shortcuts, all of which can be viewed and remapped by selecting Settings → Configure Shortcuts.... Note that in the Files and Folders windows, all the normal KDE shortcuts are functional, unless otherwise remapped.

A few of the most useful default bindings are:

- **Space**: Displays the next image in the directory.
- **Backspace**: Displays the previous image in the directory.
- **Ctrl+Return**: Toggles between Browse and View modes.
- **Ctrl+Shift+F**: Activates Full Screen mode.
- **Escape**: Exits from Full Screen mode.

4.3 Docked windows

The Gwenview interface is composed of a number of smaller docked windows. Manipulating these windows can be difficult at first. To focus a particular window in the Gwenview interface, simply click within it.

Each docked window has a small grip bar along the top. It contains a dock/undock button resembling an arrow at its right end and a close button resembling the letter X. It looks like this:



- Clicking the close button on a docked window will remove it from the interface. To bring it back, select its name in the Window menu.
- To resize docked windows, drag the border between the windows.
- To re-arrange the docked windows, drag a window by its grip bar over to the desired position. While dragging, a small box outline will appear to indicate the position the window will take when you end the drag.

If you wish to stack two windows and use tabs to choose between them, drag the window to the very center of the other window with which you wish to stack.

- To undock a window, either click the dock/undock button in its top right corner, or double-click on the window's grip bar.

Double-clicking again or clicking on the dock/undock button, should return the window to its original position.

You can also dock an undocked window by dragging its grip bar back to a point within the general interface, just as if you were rearranging an already docked window.

Gwenview User Manual

- The file view window cannot be undocked or moved, but by moving other windows around, it can itself be shifted about.
- While dragging a window, press the **Escape** key to cancel the operation. To reset the docked windows to the default Gwenview layout, use Window → Reset.