

# The KGet Handbook

Jonathan E. Drews



## The KGet Handbook

# Contents

<b>1 Quick-start Guide</b>	<b>1</b>
<b>2 Using KGet</b>	<b>2</b>
2.1 KGet Tutorial . . . . .	2
<b>3 Special Configurations</b>	<b>4</b>
3.1 Configuration of Auto-Disconnect . . . . .	4
3.2 Downloading Into Designated Folders . . . . .	4
<b>4 Command Reference</b>	<b>6</b>
4.1 The main KGet window . . . . .	6
4.1.1 The File Menu . . . . .	6
4.1.2 The View Menu . . . . .	7
4.1.3 The Transfer Menu . . . . .	7
4.1.4 The Options Menu . . . . .	8
4.1.5 The Settings Menu . . . . .	9
4.1.6 The Help Menu . . . . .	9
<b>5 Credits and License</b>	<b>10</b>
<b>A Installation</b>	<b>11</b>
A.1 How to obtain KGet . . . . .	11
A.2 Compilation and Installation . . . . .	11

### **Abstract**

KGet is KDE's download manager, designed to be user friendly and versatile.

## Chapter 1

# Quick-start Guide

1. Start KGet.
2. Drag and drop the required URL in the KGet window.

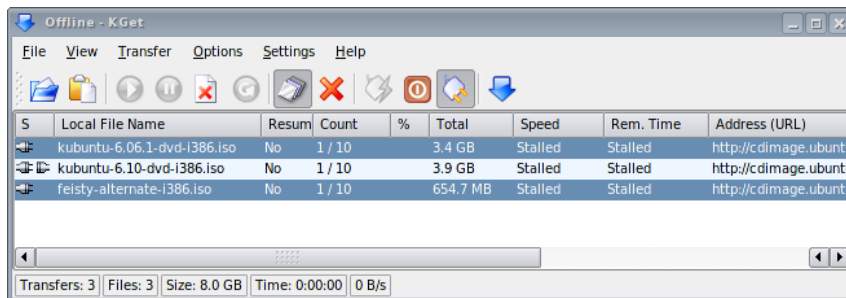
## Chapter 2

# Using KGet

### 2.1 KGet Tutorial

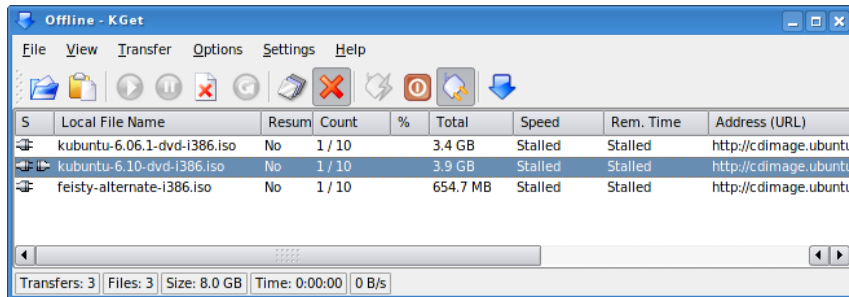
Here is a brief tutorial that demonstrates some of the features of KGet. The screenshot shows three software packages that are to be downloaded. This tutorial lists the procedure to download the middle one first, and then the other two.

1. Place KGet in offline mode, by choosing the menu item Options → Offline Mode.
2. Click on the first file with the left mouse button. Hold down the **Ctrl** key and click on the bottom most file. The KGet window should look similar to this:

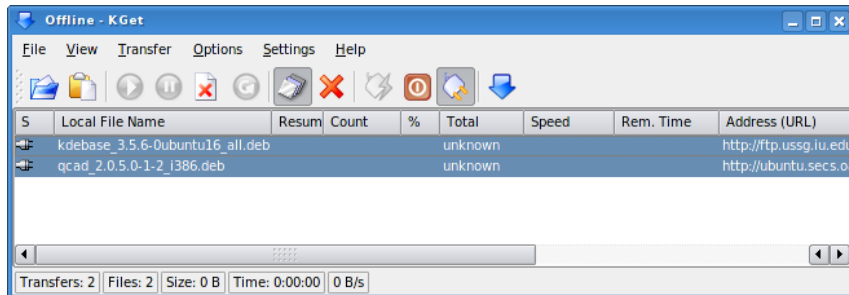


3. Click on the Delay button to prevent these items from being downloaded.
4. Now click on the middle entry to highlight it. The top and bottom items will no longer be highlighted.

## The KGet Handbook



5. Put KGet back into the online mode by unchecking Options → Offline Mode and KGet will download the middle file.
6. Click on the top item, hold down the **Shift** key and click on the bottom item. The KGet window should look like this:



### NOTE

Holding down the **Ctrl** key allows you to select individual items; holding down the **Shift** key allows you to select consecutive items, while clicking with the left mouse button.

7. Now click on the Queue icon or choose Transfer → Queue to download the two highlighted items.

## Chapter 3

# Special Configurations

### 3.1 Configuration of Auto-Disconnect

This feature is used for automatically disconnecting your modem once a download has been completed. To configure KGet for auto-disconnect do:

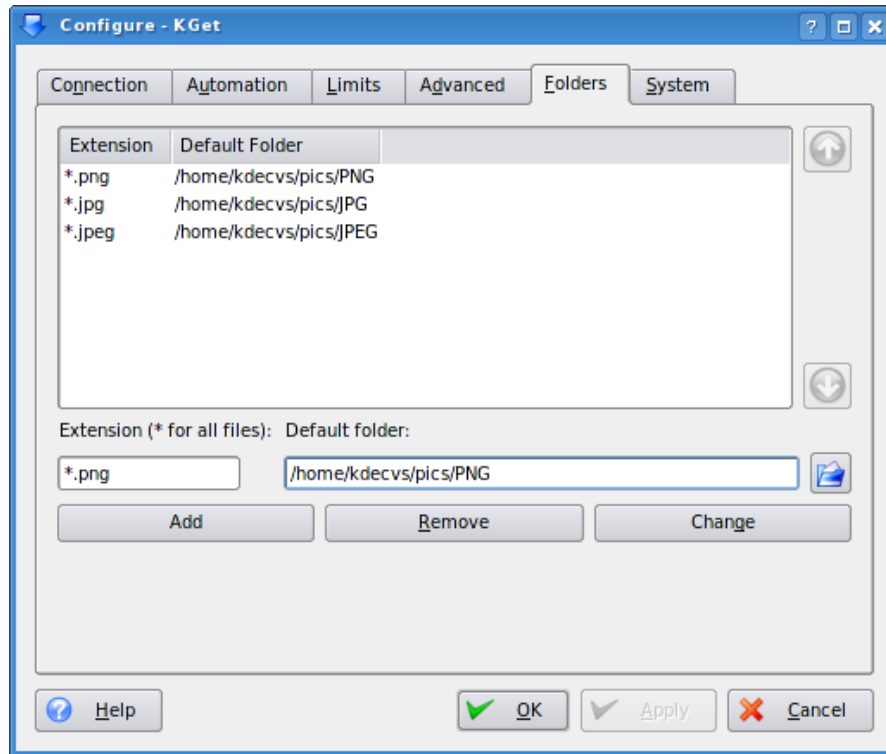
- Go to Options → Auto-Disconnect Mode to disconnect the modem. Usually this would be KPPP. Expert Mode must be on to use this feature.
- For SuSE® users the command `cinternet -i ppp0 -0` must be substituted for `kppp -k` in the Settings → Configure KGet... Automations menu.
- For Fedora Core users the command should be `/usr/sbin/usernetctl ppp0 down`
- Users of other distributions, please check the documentation included with your distribution for the appropriate command.

### 3.2 Downloading Into Designated Folders

To download JPEG files into a designated folder do:

- Go to Settings → Configure KGet... Folders menu.
- Enter the files you wish to download using the extensions `.jpg` and `.jpeg` as shown below:

## The KGet Handbook



- Click on Apply and OK. When you download any .jpeg files they will be stored in /home/kdecvs/pics/JPEG.

## Chapter 4

# Command Reference

### 4.1 The main KGet window

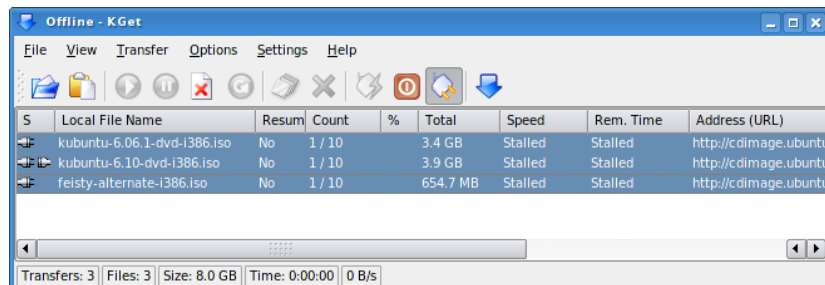
#### 4.1.1 The File Menu

**File** → **Open (Ctrl+O)** Opens the transfer window where you can paste URL's.

**File** → **Paste (Ctrl+V)** Pastes the contents of the clipboard into the transfer window.

**File** → **Export Transfer List...** Opens a Save As window that allows you to save highlighted URL's to a .kget file. To use this feature:

- Place KGet in offline mode by clicking on the offline mode button in the toolbar or choosing Options → Offline Mode.
- Drag the URL's you wish to download on to KGet.
- Next click on the top entry so that it is highlighted.
- Hold down the Shift key and click on the bottom URL to highlight the entries like so:



- Now click on File → Export Transfer List... and enter the name of the .kget file for your downloads.

## The KGet Handbook

This feature is used to save items that will be downloaded on a regular basis, such as the KDE snapshots above.

**File** → **Import Transfer List...** Loads `.kget` files that were created with **File** → **Export Transfer List...**

**File** → **Import Text File...** Imports URL's that are in text files. This is a powerful feature that allows you to parse URL's from text files and emails you may have received. It can discriminate between ordinary text and URL's, provided the URL begins at the left margin of the document. KGet will find these URL's and load them into its main window for you.

### NOTE

This feature only ignores regular text when you have clicked on the Expert Mode icon. If the Expert Mode is not used then the text file must contain only URL's.

**File** → **Quit (Ctrl+Q)** Quits KGet

### 4.1.2 The View Menu

**View** → **Show Log Window** Opens a log window that shows the events that have occurred. This is useful for seeing what happened during a lengthy download. Here you can see if any packages were skipped or if a connection timed out.

### 4.1.3 The Transfer Menu

#### NOTE

In order for the entries in this menu to become active (not grayed out), you must highlight a download by clicking on the entry with the left mouse button.

**Transfer** → **Copy URL to Clipboard** This pastes a highlighted line into the KDE clipboard (Klipper).

**Transfer** → **Open Individual Window** Displays the selected download in its own window.

**Transfer** → **Move To Beginning** Moves a highlighted entry to the top of the download list.

#### NOTE

The topmost URL in KGet is downloaded first.

## The KGet Handbook

**Transfer** → **Move To End** Moves a highlighted entry to the bottom of the download list.

**Transfer** → **Resume** Resumes a download that has been paused.

**Transfer** → **Pause** Pauses a download that is running.

**Transfer** → **Delete** Deletes a highlighted item from the KGet main window.

**Transfer** → **Restart** Combines the functions of Resume and Pause in one button.

**Transfer** → **Queue** Causes the highlighted entries in KGet to begin downloading.

**Transfer** → **Timer** Delays the download of the highlighted items by one minute. This is useful if you need to pause the download to check email or go to a website.

**Transfer** → **Delay** Delays the download of the highlighted items indefinitely.

### NOTE

Queue, Timer and Delay are mutually exclusive; only one of them may be selected at a time.

### 4.1.4 The Options Menu

**Options** → **Use Animations** Toggle use of animations to display KGet's state.

**Options** → **Use Sound** Toggle the use of sound to indicate events, e.g. a file being added to the download list, or a download completing.

**Options** → **Expert Mode** Turns off prompting.

**Options** → **Use-Last-Folder Mode** KGet will ignore the current folder settings and place all new transfers in the folder where the last transfer was placed.

**Options** → **Offline Mode** Toggles KGet from being online (ready to download) to offline. The offline mode is used when you want to copy URL's into KGet without them being downloaded immediately.

**Options** → **Auto-Disconnect Mode** Causes KGet to disconnect the modem. Usually this would be KPPP. Expert Mode must be on to use this feature. You can find more information about the Auto-Disconnect Mode in Section 3.1.

**Options** → **Auto Shutdown Mode** Closes KGet after all the downloads are completed. The Expert Mode must be turned on.

**Options** → **Auto-Paste Mode** Enable grabbing of files to download from the clipboard.

### 4.1.5 The Settings Menu

**Settings** → **Hide Statusbar** Hide the status bar. The status bar normally displays statistics about the currently downloading files.

**Settings** → **Drop Target** The drop target is a desktop icon that allows for hiding and restoring of KGet. Also, download links can be dragged-and-dropped onto this drop target, to add it to the download queue.

**Settings** → **Configure Shortcuts...** Display the KDE Keyboard Shortcut Configuration Dialog.

**Settings** → **Configure Toolbars** Display the KDE Toolbar Configuration Dialog.

**Settings** → **Configure KGet** Launch the main KGet configuration dialog.

### 4.1.6 The Help Menu

**Help** → **KGet Handbook (F1)** Invokes the KDE Help system starting at the KGet help pages. (this document).

**Help** → **What's This? (Shift+F1)** Changes the mouse cursor to a combination arrow and question mark. Clicking on items within KGet will open a help window (if one exists for the particular item) explaining the item's function.

**Help** → **Report Bug...** Opens the Bug report dialog where you can report a bug or request a 'wishlist' feature.

**Help** → **Switch Application Language...** Opens a dialog where you can edit the Primary language and Fallback language for this application.

**Help** → **About KGet** This will display version and author information.

**Help** → **About KDE** This displays the KDE version and other basic information.

## Chapter 5

# Credits and License

KGet

Program copyright 1998 Matej Moss

Contributors:

- Patrick Charbonnier [pch@freeshell.org](mailto:pch@freeshell.org)
- Carsten Pfeiffer [pfeiffer@kde.org](mailto:pfeiffer@kde.org)

Documentation Copyright (c) 2003 Jonathan Drews [j.e.drews@att.net](mailto:j.e.drews@att.net)

Documentation Copyright (c) 2007 Rohan B. Dhruva [rohandhruva@gmail.com](mailto:rohandhruva@gmail.com)

This documentation is licensed under the terms of the [GNU Free Documentation License](#).

This program is licensed under the terms of the [GNU General Public License](#).

# Appendix A

## Installation

### A.1 How to obtain KGet

KGet is part of the KDE project <http://www.kde.org/> .

KGet can be found in the kdenetwork package on <ftp://ftp.kde.org/pub/kde/> , the main FTP site of the KDE project.

### A.2 Compilation and Installation

For detailed information on how to compile and install KDE applications see [Building KDE4 From Source](#)

Since KDE uses **cmake** you should have no trouble compiling it. Should you run into problems please report them to the KDE mailing lists.