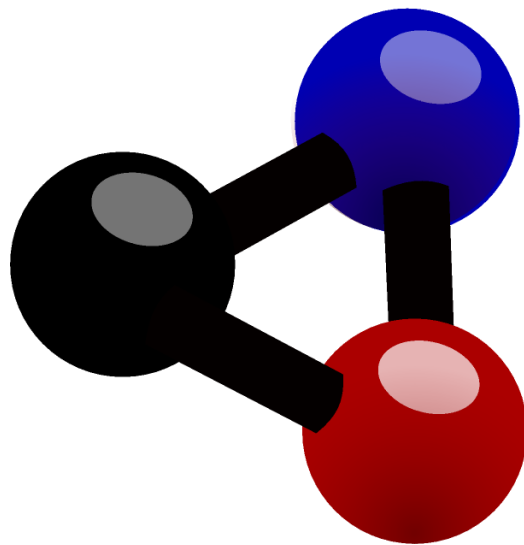


The Kalzium Handbook

Carsten Niehaus



The Kalzium Handbook

Contents

1	Introduction	6
2	Kalzium quick start guide	7
3	Using Kalzium	10
3.1	Overview of Kalzium usage	10
3.2	The information dialog	10
3.2.1	Data Overview	11
3.2.2	Bohr Orbitals	11
3.2.3	Isotopes	12
3.2.4	Miscellaneous	13
3.2.5	Spectrum	14
3.2.6	Extra Information	14
3.3	Tables	15
3.4	Numeration	15
3.5	Color schemes	16
3.6	Gradients	16
3.7	Tools	17
3.7.1	Molecular Editor	17
3.7.2	Isotope Table	18
3.7.3	Plot Data	19
3.7.4	Perform Calculation	20
3.7.5	Risk/Security Phrases	25
3.7.6	Glossary	26
3.7.7	Tables	27
3.7.8	Sidebar	27
3.7.8.1	Overview	27
3.7.8.2	View	28
4	Configuring Kalzium	30
5	Command Reference	33
5.1	Menus and shortcut keys	33
5.1.1	The File Menu	33
5.1.2	The View Menu	33
5.1.3	The Tools Menu	35
5.1.4	The Settings and Help Menu	35

The Kalzium Handbook

6	Questions and Answers	36
7	How can I contribute?	37
8	Credits and License	38

Abstract

Kalzium is a program which shows you the Periodic Table of Elements. You can use Kalzium to search for information about the elements or to learn facts about the periodic table.

Chapter 1

Introduction

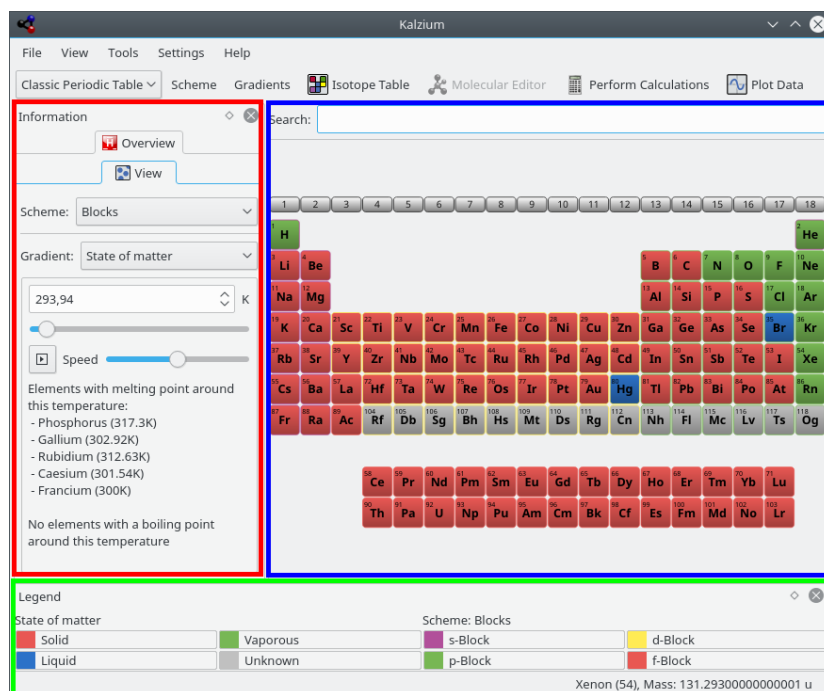
Kalzium provides you with all kinds of information about the Periodic Table of the Elements. You can lookup lots of information about the elements and also use visualizations to show them. It is free and licensed under the GNU Public License.

You can visualize the Periodic Table of the Elements by groups, blocks, and families. You can plot data for a range of elements for properties like the boiling point or the atomic mass. You can go back in time and see what elements were known at a given date. You can also calculate the molecular mass of molecules.

Chapter 2

Kalzium quick start guide

Here is Kalzium the first time you run it, either by selecting **Applications** → **Education** → **Science** → **Kalzium** from the application starter or with **Alt+F2** and entering **kalzium** into the input field.



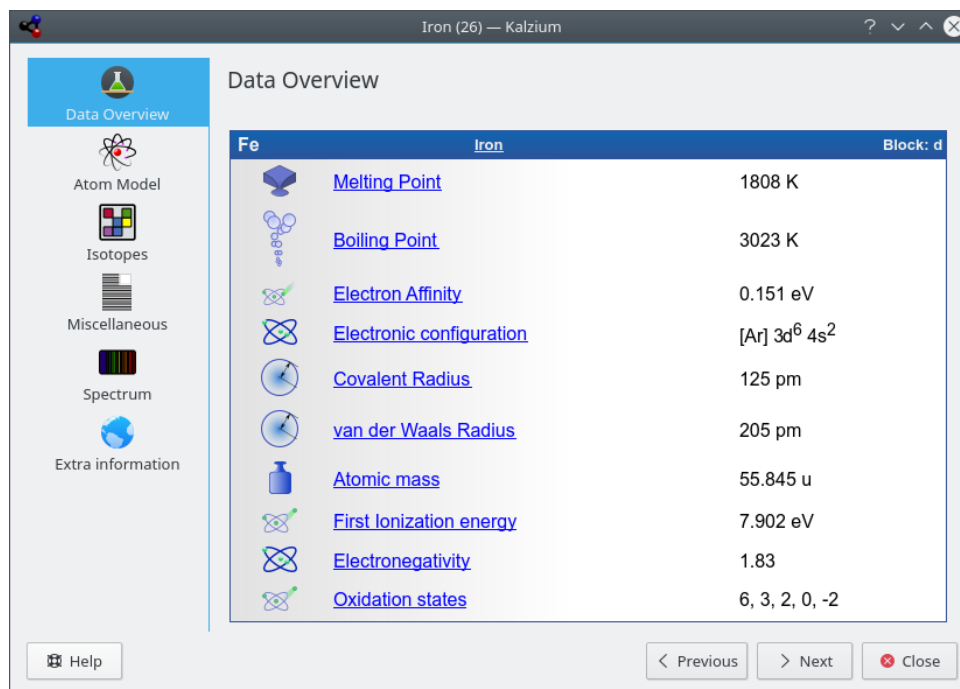
Kalzium is divided in an information panel on the left (in red), the table view (in blue) which shows the elements of the periodic table, and a legend panel at the bottom (in green). The standard menubar allows you to choose what you want to display and the status bar reports facts. The table view and the panels can be hidden using the corresponding items in **View** menu. For example, you can hide the information panel with **View** → **Information**.

When you move the mouse cursor on an element of the table, an overview of the current element is displayed in the **Overview** tab of the information panel.


You can choose several views for the table: classic periodic table, short periodic table, long periodic table, etc. It is also possible to change numeration scheme or display the elements per families, per groups, per crystal structure, depending on their acidic behavior, etc. You can change all that in the **View** menu.

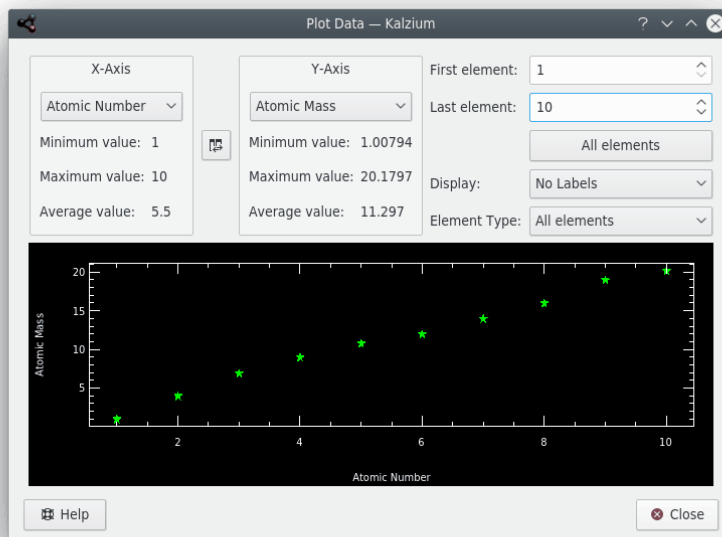
If you want to know facts about a precise element, click on it in the table and the information dialog will be displayed.

The Kalzium Handbook



Property	Value
Melting Point	1808 K
Boiling Point	3023 K
Electron Affinity	0.151 eV
Electronic configuration	[Ar] 3d ⁶ 4s ²
Covalent Radius	125 pm
van der Waals Radius	205 pm
Atomic mass	55.845 u
First Ionization energy	7.902 eV
Electronegativity	1.83
Oxidation states	6, 3, 2, 0, -2

You can plot data using the **Tools** → **Plot Data...** menu item. You choose what you want to plot on the y-axis and a range of elements to plot that for on the x-axis. The screenshot below shows the atomic mass of the elements 1 to 10. Click the  **Swap** button between the axis panes to swap X and Y axes.



The Glossary (**Tools** → **Glossary...**) explains the most important chemical words and shows you pictures of the most common tools along with an explanation.


The Kalzium Handbook

Glossary

Search:

- > Knowledge
- ▼ Tools
 - > B
 - > C
 - > D
 - > E
 - > F
 - > H
 - > I
 - ▼ M
 - Magnetic Stir Bar**
 - Magnetic Stir Bar Retriever
 - Measuring Cylinder
 - Mortar
 - > P
 - > R
 - > S
 - > T
 - > U
 - > V
 - > W

Magnetic Stir Bar



Magnetic stir bars are highly chemically inert, small magnetic bars. Most heaters have a built-in magnet which can rotate: this causes the stir bar to rotate and the mixture to become homogenized.

Close

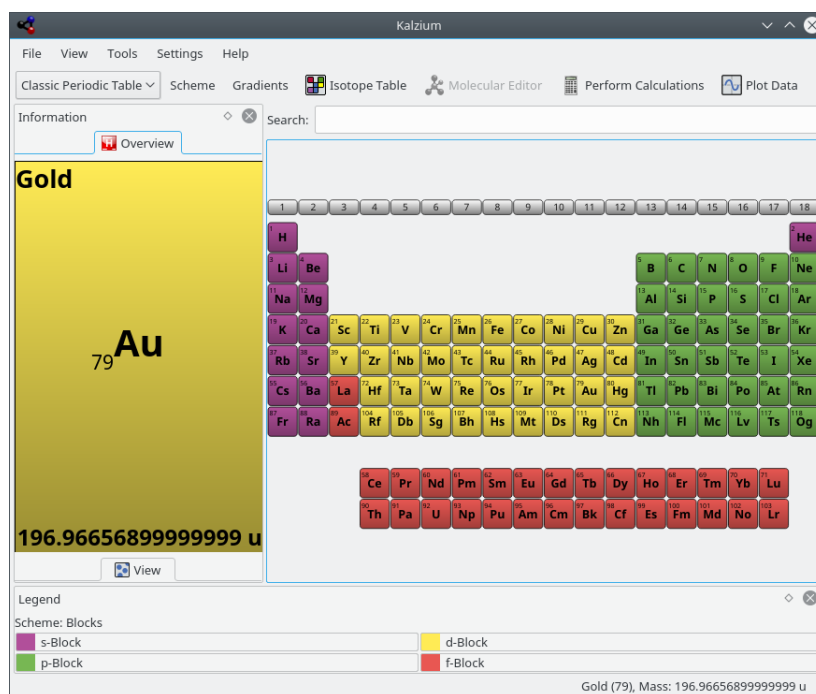
Chapter 3

Using Kalzium

3.1 Overview of Kalzium usage

Kalzium is very easy to use. It is specially designed for students of all ages to use as a small and quick database.

Here is a screenshot of Kalzium in action:



3.2 The information dialog

The information dialog is accessed by clicking with the left mouse button on any element. This is the place to get information about an element. With the buttons at the bottom of the dialog you can change the element which is displayed without closing the dialog.

3.2.1 Data Overview

The **Data Overview** page tells you about different facts related to the element.

Depending on the data available in Kalzium you will see different radii of the element. The covalent radius is the radius of a non charged atom of the element in a molecule. The could for example be the O-H-distance in Water. The atomic radius is the radius of an elemental atom, e.g. not bound to anything. The van der Waals-radius is defined as the distance of two atoms of the same sort in two equal molecules, for example two carbon-atoms in propane. The last possible radius is the ionic radius including its charge.

The mass of an element is the average mass of all isotopes in relation to their percentage.

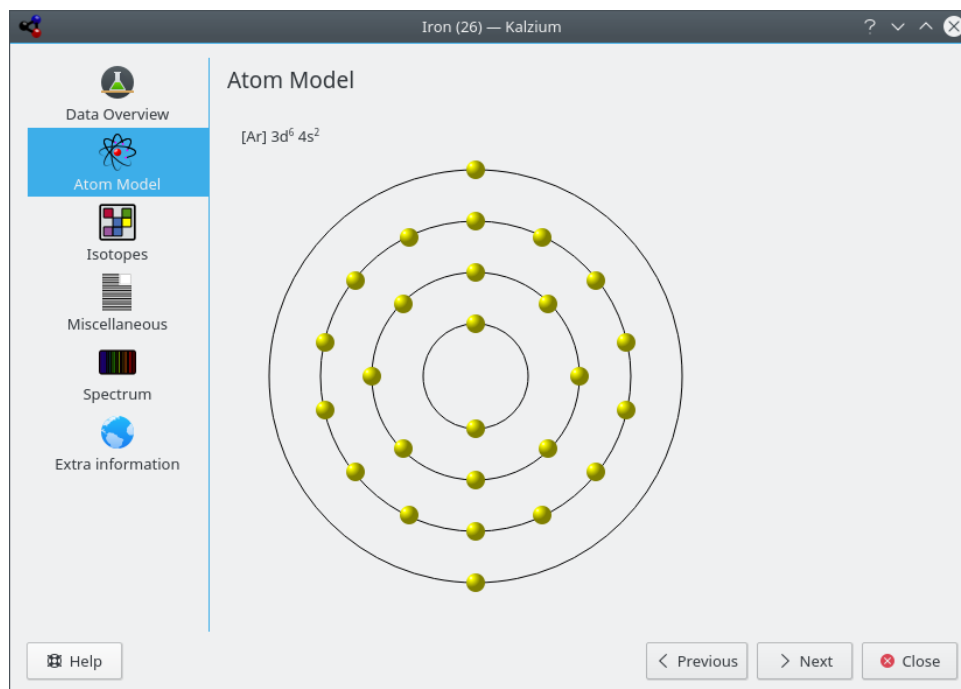
The screenshot shows the 'Data Overview' window for Iron (Fe) in the Kalzium software. The window title is 'Iron (26) — Kalzium'. On the left, there is a sidebar with navigation options: Data Overview (selected), Atom Model, Isotopes, Miscellaneous, Spectrum, and Extra information. The main area displays a table of properties for Iron (Fe), with the block 'd' indicated in the top right corner.

Property	Value
Melting Point	1808 K
Boiling Point	3023 K
Electron Affinity	0.151 eV
Electronic configuration	[Ar] 3d ⁶ 4s ²
Covalent Radius	125 pm
van der Waals Radius	205 pm
Atomic mass	55.845 u
First Ionization energy	7.902 eV
Electronegativity	1.83
Oxidation states	6, 3, 2, 0, -2

At the bottom of the window, there are buttons for 'Help', '< Previous', '> Next', and 'Close'.

3.2.2 Bohr Orbitals

The **Atom Model** page displays the atomic shells. Every orbit stands for a atomic shell and every yellow circle represents an electron.



3.2.3 Isotopes

The **Isotopes** page presents information about the isotopes of an element.

Mass

The mass of this isotope.

Neutrons

The number of neutrons this isotope has.

Percentage

The percentage of atoms occurring that are of this isotope type. Also called abundance.

Half-life period

Only unstable isotopes have a half-life period. It is defined as the time in which half the isotopes decay.

Energy and Mode of Decay

Some isotopes are known to emit particle radiation under the process of radioactive decay. Each decay transformation has a typical energy release, which is listed along with the mode of decay.

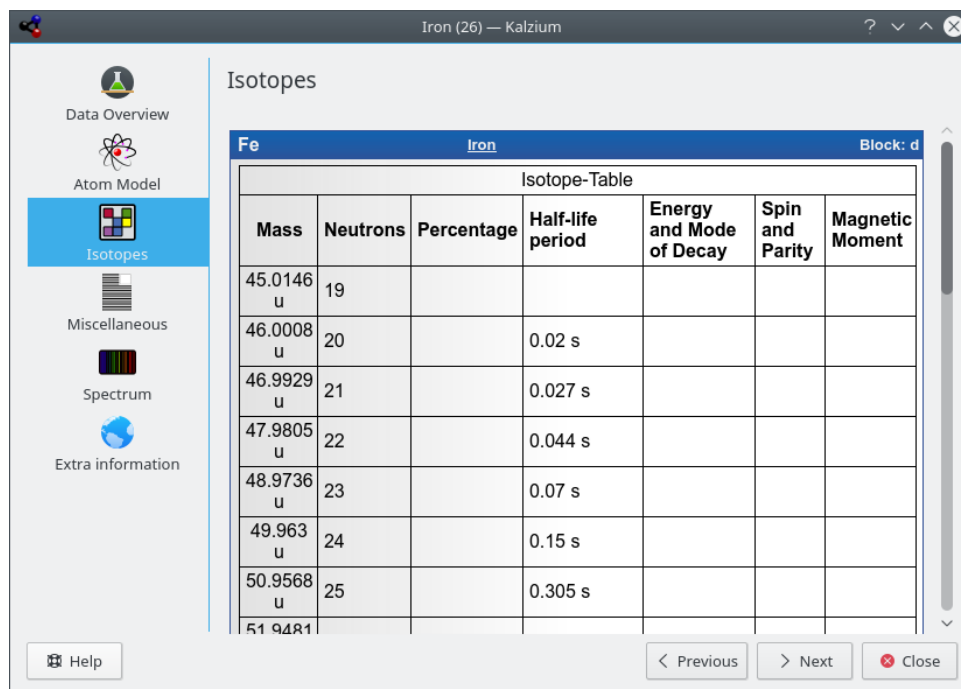
Spin and Parity

The spin of the nucleus and its parity.

Magnetic Moment

The magnetic dipole moment of the nucleus. Measured in units of the nuclear magneton.

The Kalzium Handbook



Iron (26) — Kalzium

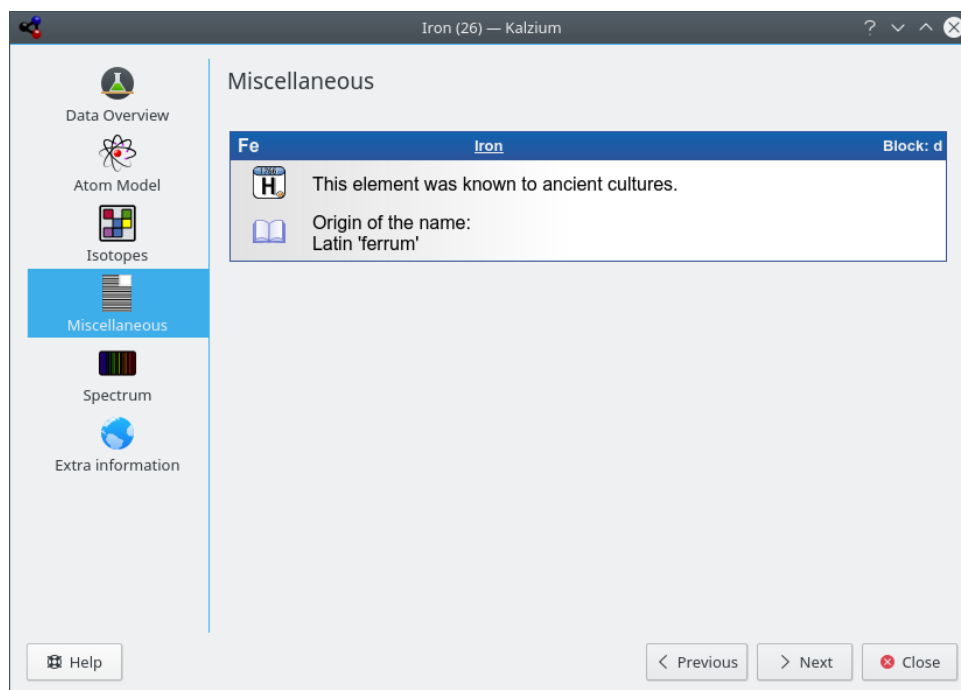
Isotopes

Mass	Neutrons	Percentage	Half-life period	Energy and Mode of Decay	Spin and Parity	Magnetic Moment
45.0146 u	19					
46.0008 u	20		0.02 s			
46.9929 u	21		0.027 s			
47.9805 u	22		0.044 s			
48.9736 u	23		0.07 s			
49.963 u	24		0.15 s			
50.9568 u	25		0.305 s			
51.9481 u						

Help Previous Next Close

3.2.4 Miscellaneous


The **Miscellaneous** page tells you other information about the current element, including when it was discovered and the origin of the name.




Iron (26) — Kalzium

Miscellaneous

Fe Iron Block: d

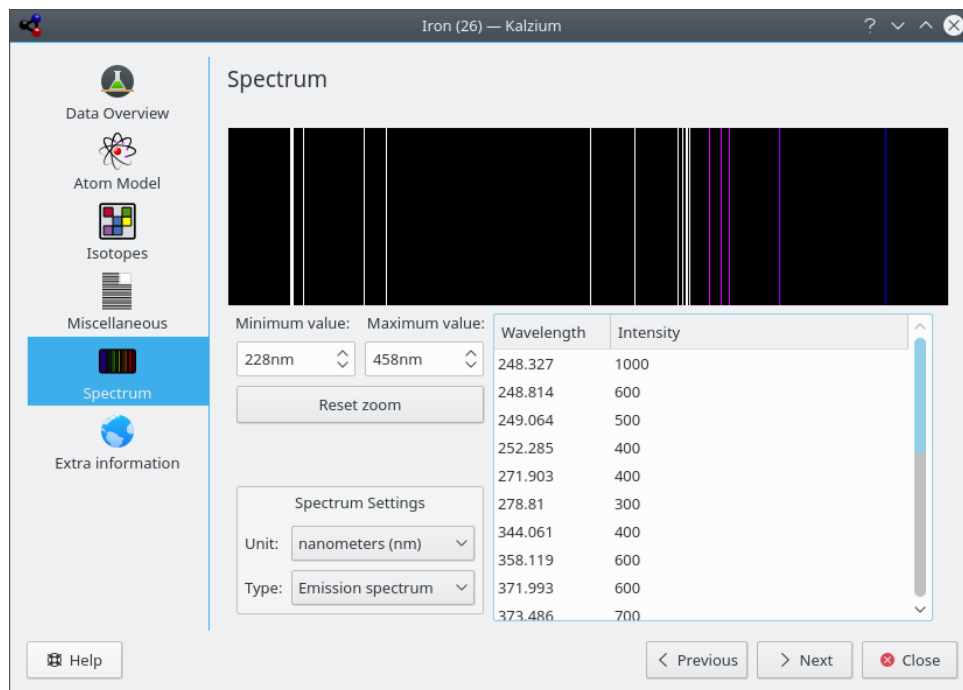
 This element was known to ancient cultures.

 Origin of the name:
Latin 'ferrum'

Help Previous Next Close

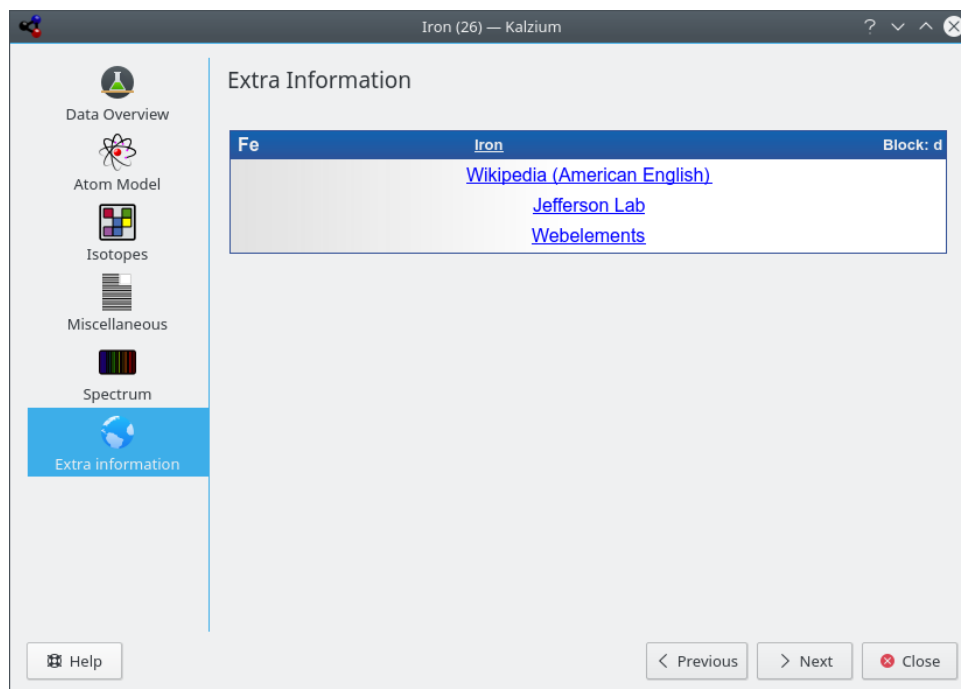
3.2.5 Spectrum

The **Spectrum** page shows you elements spectrum. You can choose the range of the wavelengths, units and type of the spectrum. The intensity table can be seen at the right bottom part of the page.



3.2.6 Extra Information

The **Extra information** page gives you the links to the element pages on Wikipedia, [Jefferson Lab](#), and [WebElements](#).



3.3 Tables

The periodic table can be presented in various ways. You can switch the table view from **View** menu or toolbar drop-down list.

The following options in the **View** → **Tables** menu can be used to change the table shown:

Classic Periodic Table

Display the classic periodic table with all elements.

Short Periodic Table

Display a periodic table without transition elements.

Long Periodic Table

Display a periodic table with inner transition elements (f-elements) embedded.

Transition Elements

Display a periodic table only with transition elements.

DZ Periodic Table

This item represents the table the DZ *Deutscher Zentralausschuss* "German Central Committee" suggests.

3.4 Numeration

The numeration is the way of numbering the 18 groups of the periodic table. You can change the numeration to **IUPAC**, **old IUPAC** or **CAS**, or you can switch it off entirely.

The following options in the **View** → **Numeration** menu can be used to change the numeration shown:

- **No Numeration:** if this option is active, no period-numeration will be in effect.
- **IUPAC** (default) is the *International Union of Pure and Applied Chemistry*. This is an organization which defines most of the standards for chemical concerns. The new IUPAC system numbers each column with Arabic numbers from 1 (one) through 18 (eighteen).
- **CAS** is the *Chemical Abstracts Service*. In the CAS system the letters A and B were designated to main group elements (A) and transition elements (B). Though the IUPAC numeration is the official, the CAS numeration is what is still used in classrooms and laboratories.
- The **Old IUPAC** system labeled columns with Roman numerals followed by either the letter 'A' or 'B'. Columns were numbered such that columns one through seven were numbered 'IA' through 'VIIA', columns 8 through 10 were labeled 'VIII A', columns 11 through 17 were numbered 'IB' through 'VIIB' and column 18 was numbered 'VIII'. Because of the confusion the old IUPAC and the CAS system created, the IUPAC adopted their new system.

3.5 Color schemes

Kalzium can show you which elements are where with regard to their Periodic 'block' and 'group', their behavior with acid and which state of matter (i.e. solid/liquid/vapor) they are in at a given temperature.

Color schemes can be changed in the **View** → **Scheme** menu, toolbar drop-down list, or **View** tab of the Sidebar.

- **Monochrome:** all the elements have the same color. You can change the default color by choosing **Settings** → **Configure Kalzium...** and going to the **Schemes** page.
- **Blocks:** displays a color for each block.
- **Iconic:** displays icons for each element.
- **Family:** represents each of the nine families with a color.
- **Groups:** displays a color for each group. A group is a vertical column in the periodic table of the elements. There are 18 groups in the standard periodic table. Elements in a group have similar configurations of their valence shell electrons, which gives them similar properties.
- **Colors:** Nice colors without meaning. (From the [Open Babel](#) project).

3.6 Gradients

The gradient views displays the elements according to a property you can select below and with a gradient colored scheme. The elements for which the data is not available are displayed in gray.

Gradients can be changed in the **View** → **Gradients** menu, toolbar drop-down list, or **View** tab of the Sidebar.

The Kalzium Handbook

The screenshot shows the Kalzium software interface. The main window displays a periodic table with Beryllium (Be) highlighted in a large, semi-transparent pink box. The highlighted box contains the element's name 'Beryllium', its symbol 'Be', atomic number '4', and atomic mass '9.012181999999992 u'. The interface includes a menu bar (File, View, Tools, Settings, Help), a toolbar with icons for 'Classic Periodic Table', 'Scheme', 'Gradients', 'Isotope Table', 'Molecular Editor', 'Perform Calculations', and 'Plot Data'. A search bar is located at the top right. Below the periodic table, there is a legend for 'Covalent Radius (linear)' and 'Scheme: Blocks' with color-coded boxes for s-Block, p-Block, d-Block, and f-Block. The status bar at the bottom right indicates 'Beryllium (4), Mass: 9.012181999999992 u'.

Implemented are the following gradients (some listed items are clickable):

- **None:** do not use gradients.
- [State of matter](#)
- [Covalent Radius](#)
- [Van der Waals:](#) gradient by van der Waals radius.
- [Atomic Mass](#)
- [Boiling Point](#)
- [Melting Point](#)
- [Electronegativity \(Pauling\)](#)
- [Electronaffinity](#)
- [Discovery date](#)
- [First Ionization](#)

3.7 Tools

3.7.1 Molecular Editor

The Molecular Editor allows you to view and edit molecules using [Avogadro 2](#) libraries.

Using the control panel on the left, you can change the view parameters, edit molecule, or measure molecules. There are three tabs on this panel: **Display**, **Edit**, and **Measure**. At the top of the window, there is a control to select the viewer **Style**: can be **Ball and Stick**, **Licorice**, **Van der Waals**, **Van der Waals (AO)** (AO means 'Ambient Occlusion'), or **Wireframe**). The buttons along the bottom of the window can be used to **Load Molecule**, **Download New Molecules**, **Save Molecule**, and **Close** the window. The downloaded files will be saved in your `Documents` folder from where you can load them into the editor.

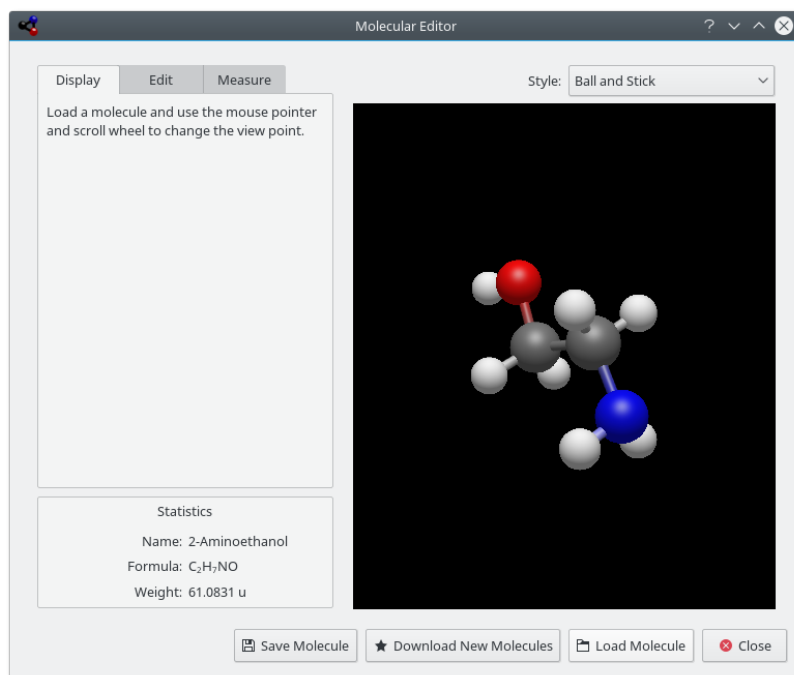
The Kalzium Handbook

Statistics pane shows name (if available), formula, and weight of the molecule.

The **Display** tab can be used to view a loaded molecule. By pressing the mouse pointer in the view, you can change the view point. Use left mouse button to rotate molecule, right mouse button to move it, and middle mouse button to zoom.

The **Edit** tab allows you to edit the molecule. You can add elements by choosing them in the **Element** drop-down list then clicking with the left mouse button on the view panel on the right.

The **Measure** tab can be used to measure distances and angles in the molecule. To make the measurement use the instructions shown on the tab.

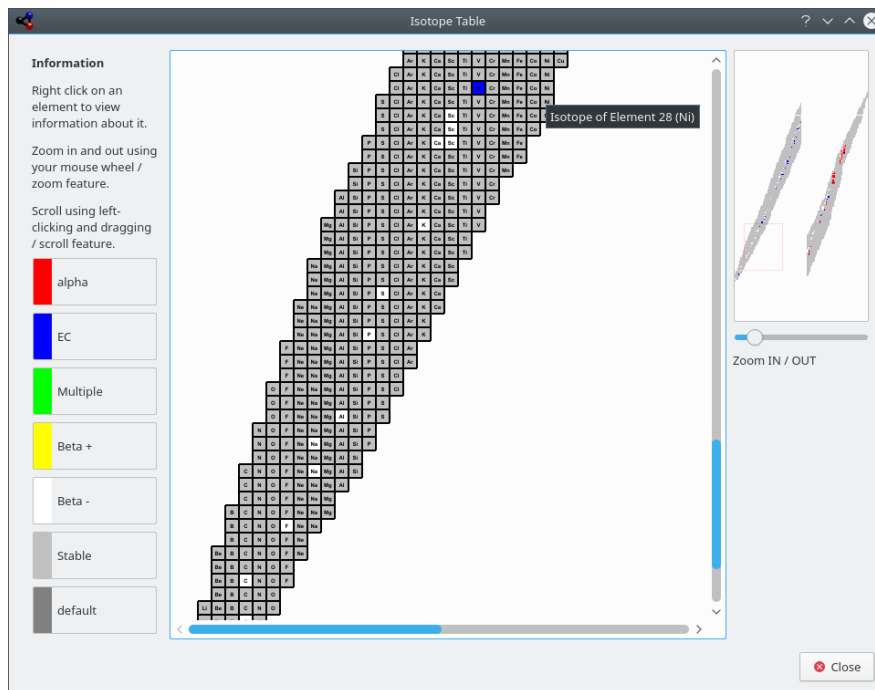


3.7.2 Isotope Table

The **Isotope Table** shows you the isotopes of the elements.


There are different kinds of isotopes, some are stable, some are not. The unstable isotopes can decay as alpha-rays or two different beta-rays. These differences are encoded by using different colors.

The Kalzium Handbook

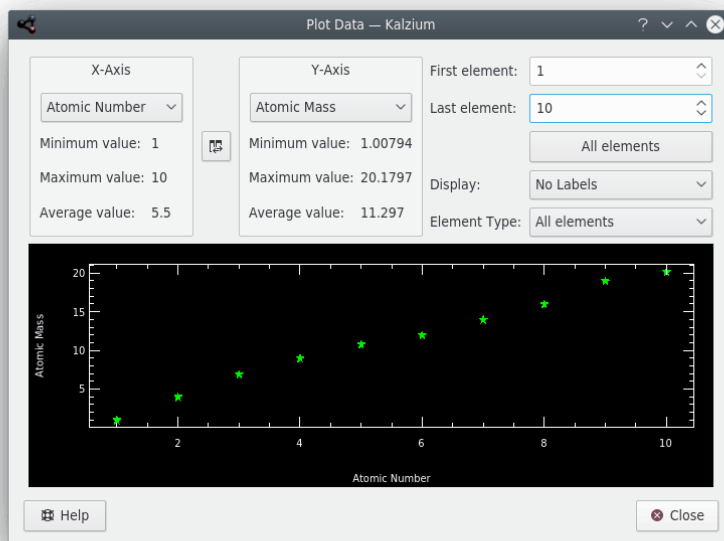


Kalzium can display the isotopes of a range of elements

3.7.3 Plot Data

The **Plot Data** dialog allows you to plot some information about elements. The X-axis represents a range of elements (from one number to a higher number). You set this range using the **First element:** and **Last element:** fields on the dialog. Click the  **Swap** button between the axis panes to swap X and Y axes.

The Kalzium Handbook



Kalzium can plot some data about a range of elements.

3.7.4 Perform Calculation

The **Perform Calculation...** is the Kalzium calculator. This calculator contains a variety of calculators for different tasks performing different calculations.

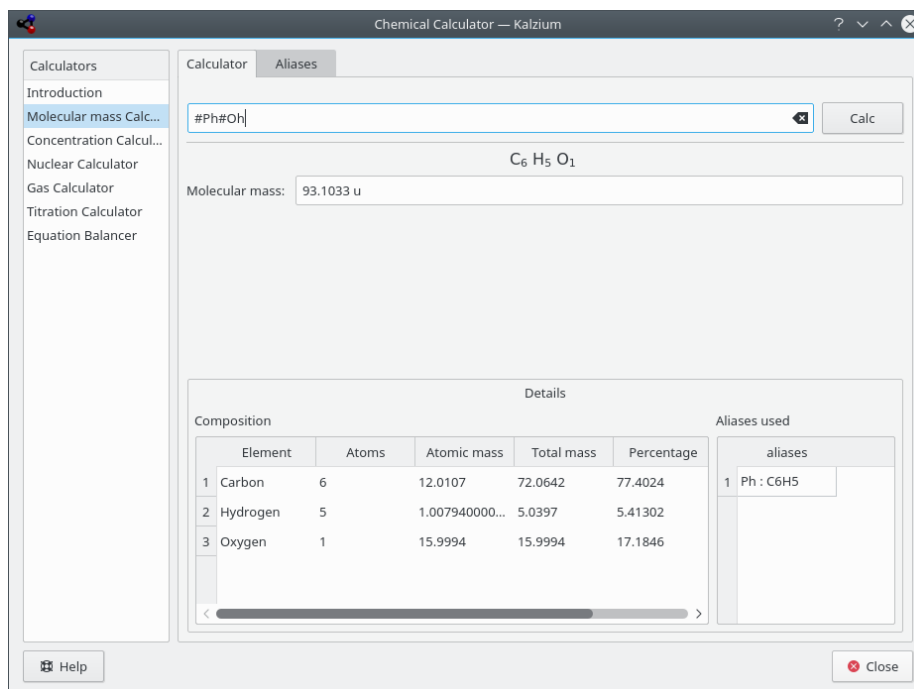
You can find the following calculators in Kalzium:

Molecular mass calculator

This calculator helps you calculate the molecular masses of different molecules.

You can specify short form of the molecule names add more such aliases.

The Kalzium Handbook



Kalzium calculates molecular mass of phenol.

Concentrations calculator

You can calculate quantities which include:

- Amount of solute
- Density of solvent
- Density of solute

There are a wide range of units to choose from and different methods to specify quantities.

The Kalzium Handbook

Chemical Calculator — Kalzium

Calculators

- Introduction
- Molecular mass Calculator
- Concentration Calculator
- Nuclear Calculator
- Gas Calculator
- Titration Calculator
- Equation Balancer

Some of the following data is not necessary. For instance, if you specify the amount of solute in moles, you do not have to specify the molar mass of the solute.

Data

Calculate:

Amount of solute:

Molar mass of solute:

Equivalent mass of solute:

Density of solute:

Amount of Solvent:

Molar mass of solvent:

Density of Solvent:

Concentration:

Reset

Close

Help

Kalzium calculates solution parameters.

Nuclear calculator

This calculator makes use of the nuclear data available in Kalzium to predict the expected masses of a material after time.

Chemical Calculator — Kalzium

Calculators

- Introduction
- Molecular mass Calc...
- Concentration Calcul...
- Nuclear Calculator
- Gas Calculator
- Titration Calculator
- Equation Balancer

Select what you want to calculate from the combo box next to the "calculate" label and change the values / units to calculate.

Elemental data

Element Name:

Isotope mass:

Half-life:

Atomic mass:

Other data

Calculate:

Initial amount:

Final amount:

Time:

Reset

Close

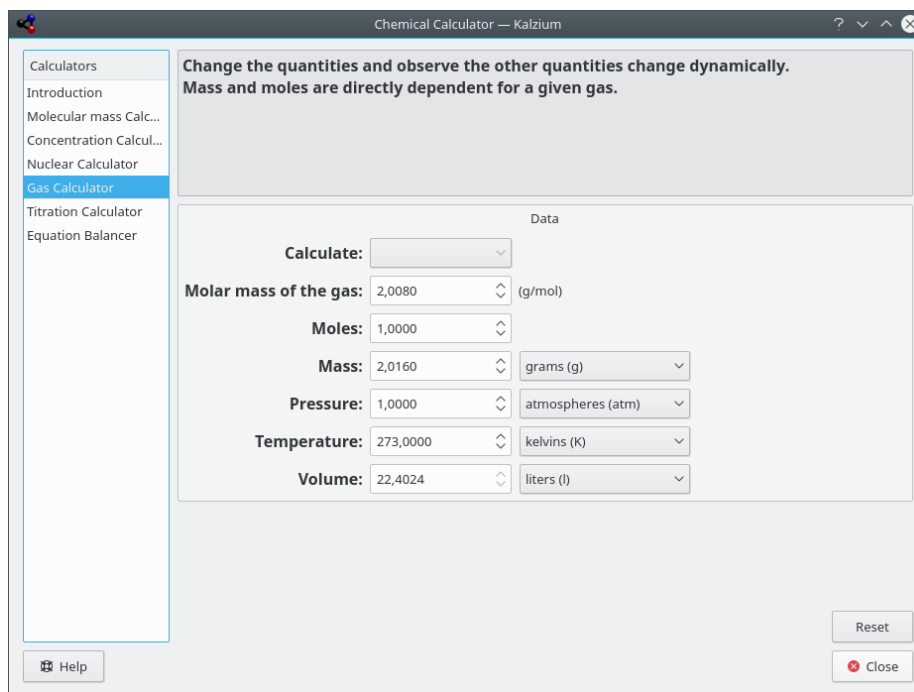
Help

Kalzium calculates parameters of uranium decay.

Gas calculator

This calculator can calculate the values of Temperature, pressure, volume, amount of gas etc. for various ideal as well as non-ideal gases.

The Kalzium Handbook



Kalzium calculates gas parameters.

Titration calculator

This calculator tries to find out the equivalence point of a pH-meter followed titration best fitting it with an hyperbolic tangent. You can also let it solve an equilibrium system of equations and see how the concentration of a species changes in function of another one.

There are two tabs on the calculator page, namely:

Experimental values

You can use this calculator to draw the plot of your experimental data obtained during a titration and find out the volume of equivalence. It's strongly recommended to insert a even number of points, because of the best fit algorithm, sorted by volume (the **X axis**: value).

Theoretical Equations

Here you can fill the table with the equations you have previously obtained for the chemical equilibrium.

For example, if you have this reaction $A + B \rightarrow C + D$ then you will have the equation $K = (C \cdot D) / (A \cdot B)$ so you must write **K** in the **Parameter** column and $(C \cdot D) / (A \cdot B)$ in the **Value** column. If you want to assign a known value to a parameter you can simply write the numeric value in the **Value** field.

For example, you can use the system

$$A = (C \cdot D) / (B \cdot K)$$

$$K = 10^{-3}$$

$$C = OH$$

$$OH = (10^{-14}) / H$$

$$H = 10^{-4}$$

$$B = 6 \cdot (10^{-2})$$

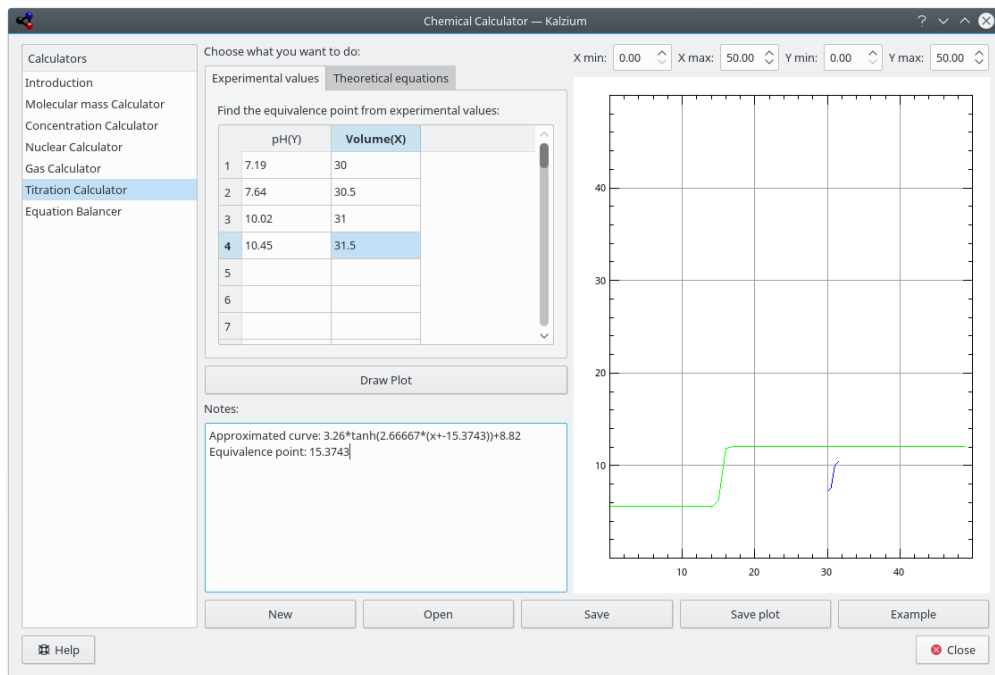
Then you have to write **D** as **X axis**: and **A** as **Y axis**: so you will find out how the concentration of A changes as a function of D concentration.

NOTE

Please don't use parenthesis for exponents: 10^{-3} is correct, while $10^{(-3)}$ is wrong.

The Kalzium Handbook

The results can be visualized by pressing **Draw Plot** button. The plot shows in red the curve that comes from theoretical equations, in blue the experimental points, and in green the approximated curve for experimental points. You can save the plot as SVG image.



Predefined example of titration results.

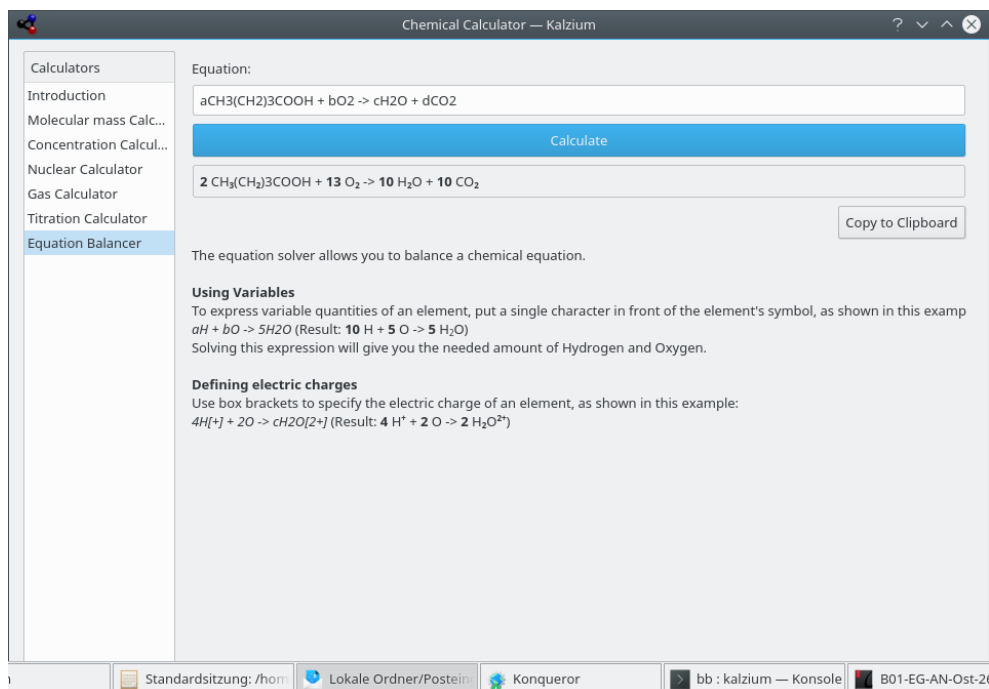
Equation Balancer

The **Equation Balancer** enables the user to solve chemical equations. This is an example:



The computed equation will be displayed on the top of the window. As you can see in the first example you can also define the value of one or more coefficients. The other coefficients will be adjusted. Furthermore, it is possible to use brackets around elements or electronic charges as shown in the last two examples.

The Kalzium Handbook

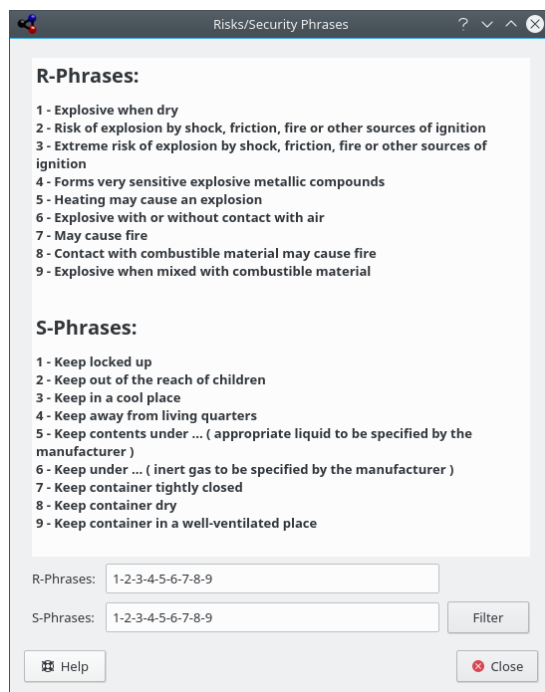


Kalzium calculates equation balance.

3.7.5 Risk/Security Phrases

The **R/S Phrases**, also known as Risk and Safety Statements, R/S statements, R/S numbers, and R/S sentences, is a system of hazard codes and phrases for labeling dangerous chemicals and compounds. The R/S phrase of a compound consists of a risk part (R) and a safety part (S), each followed by a combination of numbers. Each number corresponds to a phrase. The phrase corresponding to the letter/number combination has the same meaning in different languages.

The Kalzium Handbook

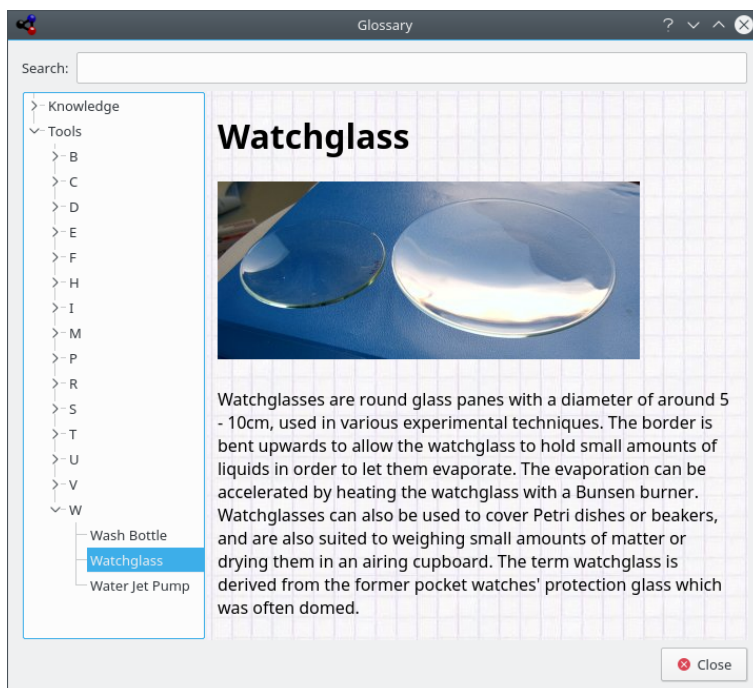


Kalzium can display Risk/Security Phrases

3.7.6 Glossary

The **Glossary** gives you definitions of the most used tools in chemistry as well as some knowledge data. On the left side of the windows you can see the tree of items. On top, there are chemical terms, below that there is a second tree of laboratory-tools.

On the top of the widget you can see a searchbar. If you type in the bar the trees will be adjusted immediately. The small button in the right end of the searchbar will clear it.



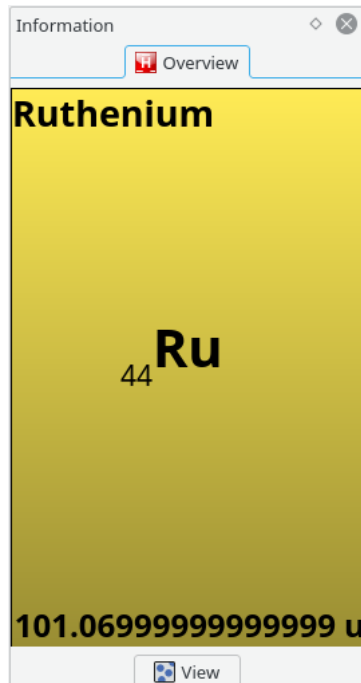
3.7.7 Tables

The **Tables** shows you the tables for Greek alphabet which is used to denote some chemical and physical entities, and for Latin prefixes and Roman numbers which correspond to common Arabic numbers.



3.7.8 Sidebar

3.7.8.1 Overview

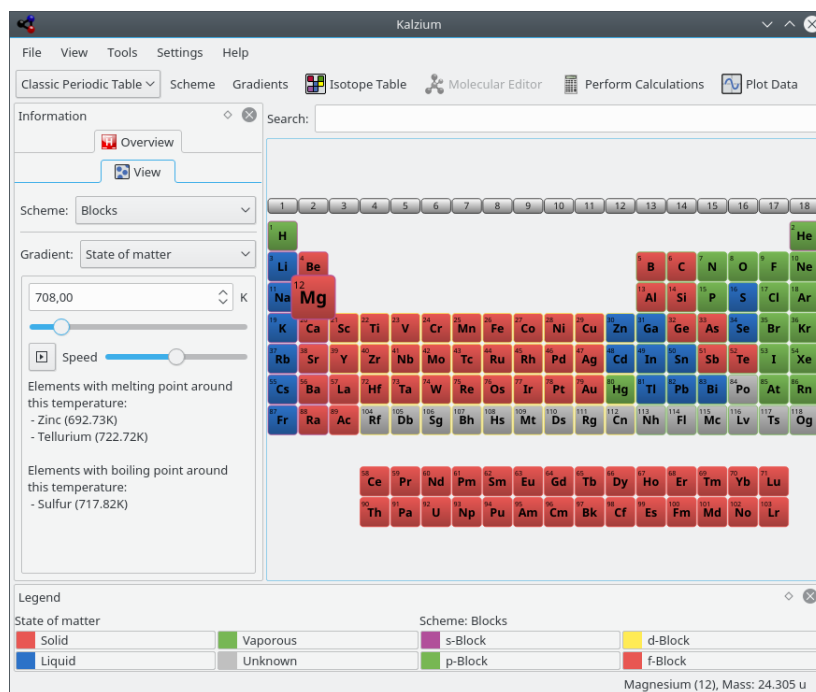


The **Overview** tab is the first one and it shows you an overview of the element the mouse is over.

3.7.8.2 View

The **View** tab is the second in the navigation panel.

You are first presented with the following icons and text:

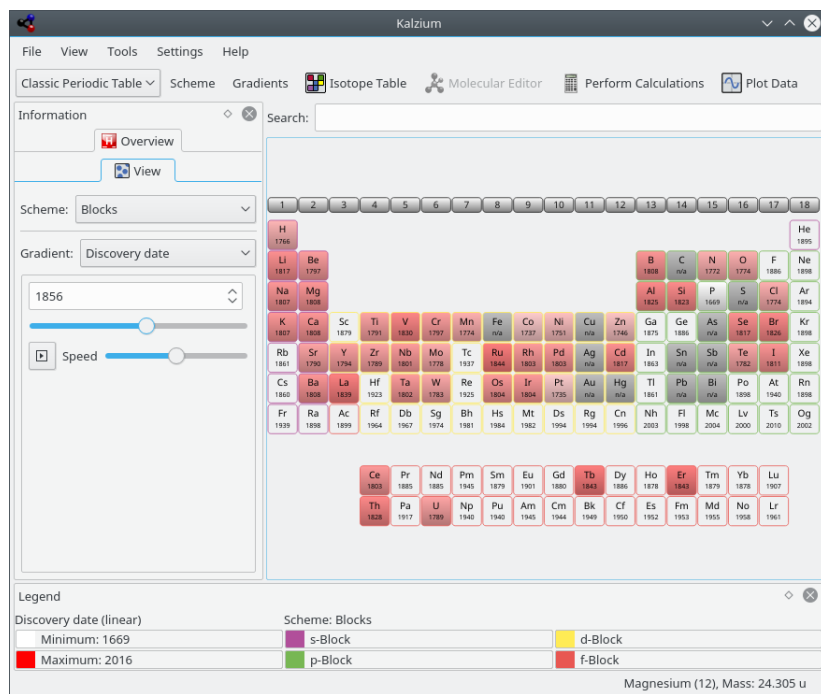


Kalzium can show you which elements are solid/liquid/vaporous at a given temperature.

The **View** tab can be used to filter PSE. For example, this feature allows you to explore the elements of the set time period. This is great for getting a feel for how the PSE evolved over time, as more and more elements were discovered. Choose **Discovery date** from **Gradient**: list. If you move the slider you will notice that color of some elements disappear if you move it to the left and reappear if you move it to the right. Furthermore the number will change constantly.

The number represents the date you are looking at. If you move the slider to e.g. 1856 you will only see the elements which were known in the year 1856.

The Kalzium Handbook

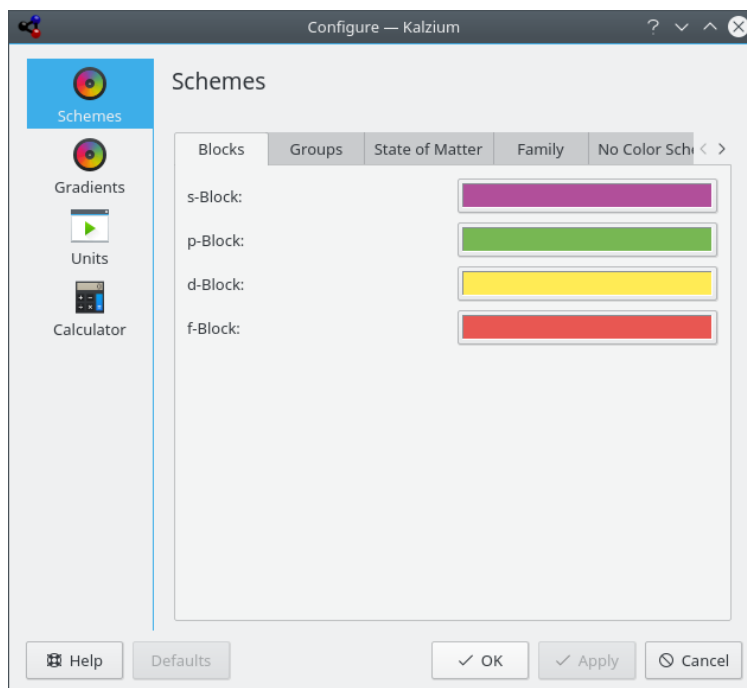


The PSE back in time (elements known in 1856)

Chapter 4

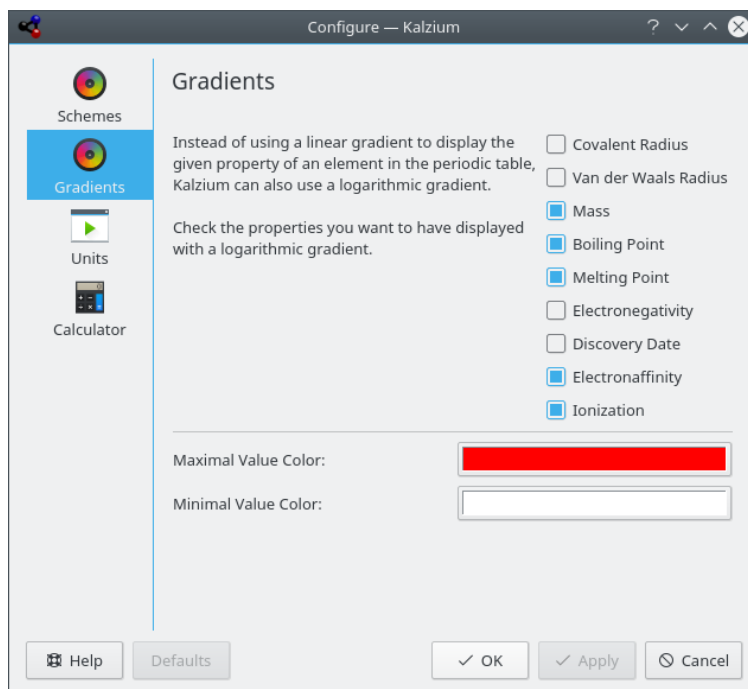
Configuring Kalzium

Kalzium has many configuration options, which you can access by opening the configuration dialog by selecting **Settings** → **Configure Kalzium...** from the menu.



In the **Schemes** tab, you can change the different colors for each scheme.

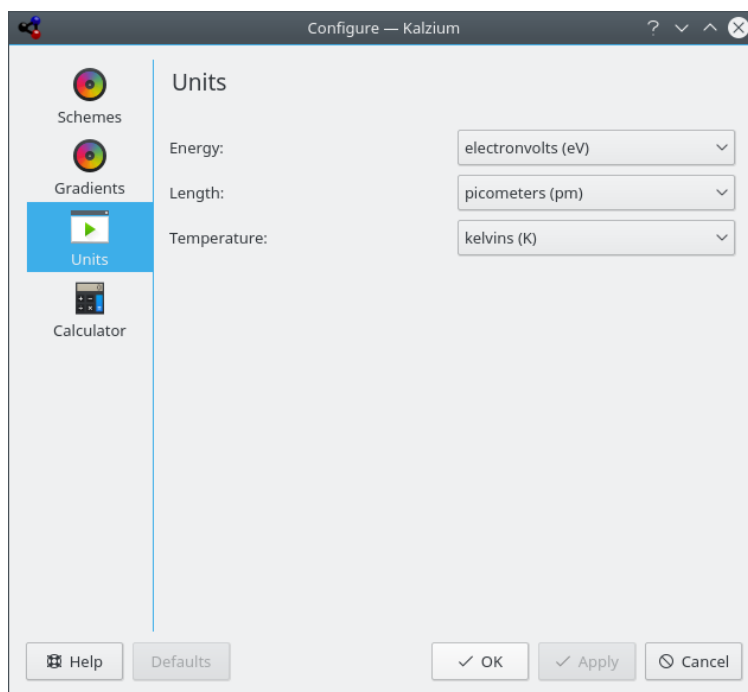
The Kalzium Handbook



Instead of using a linear gradient to display the given property of an element in the periodic table, Kalzium can also use a logarithmic gradient.

In the **Gradients** tab, you can check the properties you want to have displayed with a logarithmic gradient.

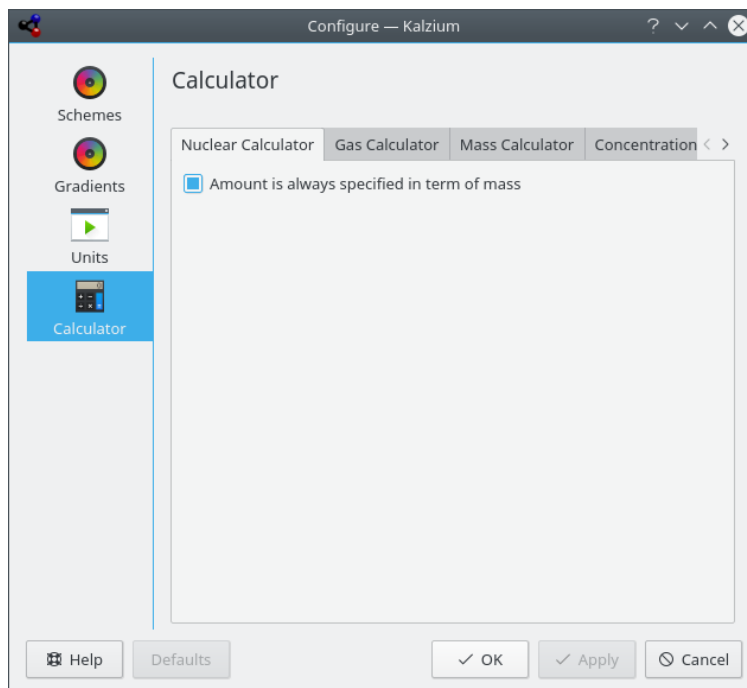
You can also choose **Maximal Value Color:** and **Minimal Value Color:** for the gradient.



In the **Units** tab, you can choose the units for energy, length and temperature. You can select if you prefer electronvolts (eV), kilojoule per mole (kJ/mol), joule per mole (J/mol) or joules (J) by default. For length set picometers (pm), nanometers (nm) or Ångström (Å) as default.

The Kalzium Handbook

The temperature is in kelvin by default but you can change to Celsius (C), Fahrenheit (F) and Réaumur (Ré).



Using the **Calculator** page, you can configure Kalzium calculators.

Chapter 5

Command Reference

5.1 Menus and shortcut keys

5.1.1 The File Menu

File → **Save As...** (Ctrl+Shift+S)

Save Kalzium's table as image.

File → **Export Data...**

Open a dialog where you can select **Elements** and their **Properties** to export them to a HTML, XML, or CSV file.

File → **Convert chemical files...**

Open a dialog to import and export a wide range of chemical file formats and data types with the [Open Babel library](#).

File → **Quit** (Ctrl+Q)

Quits Kalzium.

5.1.2 The View Menu

View → **Tables**

Display a submenu with different periodic tables. The available options are:

Classic Periodic Table

Display the classic periodic table with all elements.

Short Periodic Table

Display a periodic table without transition elements.

Long Periodic Table

Display a periodic table with inner transition elements (f-elements) embedded.

Transition Elements

Display a periodic table only with transition elements.

DZ Periodic Table

This item represents the table the DZ *Deutscher Zentrallausschuss* 'German Central Committee' suggests.

View → Numeration

Display a submenu with different numeration modes. The available options are:

No Numeration

Display no numeration scheme.

IUPAC

Display the IUPAC numeration.

CAS

Display the CAS numeration.

Old IUPAC

Display the Old IUPAC numeration.

View → Scheme

Display a submenu with different schemes. The available options are:

Monochrome

Display all elements with one background color.

Blocks

Display the four blocks of elements.

Iconic

Display icons for each element.

Family

Display the families of elements.

Groups

Display the groups of elements.

Colors

Display the colors of elements.

View → Gradients

Display a submenu with different gradients. The available options are:

None

Disable any gradient for the table.

State of matter

Display the elements' state of matter.

Covalent Radius

Display the elements' covalent radius.

Van der Waals

Display the elements' van der Waals radius.

Atomic Mass

Display the elements' atomic mass.

Boiling Point

Display the elements' boiling point.

Melting Point

Display the elements' melting point.

Electronegativity (Pauling)

Display the elements' electronegativity.

Electronaffinity

Display the elements' electron affinity.

Discovery date

Display the discovery date of each element with different background colors for each century.

First Ionization

Display the elements' energy of first ionization.

View → Legend

Toggle the legend view. Allows you to display the legend for the scheme you are in (Groups, Family, Blocks). The legend is displayed by default but if you hide it, it will stay hidden until you choose to show it. Kalzium will keep this setting in its configuration file, so that the next time you run it, the setting will be as you left it.

View → Information

Toggle the Sidebar.

View → Table Information

Toggle the Table Information view.

5.1.3 The Tools Menu

Tools → Molecular Editor...

Open the **Molecular Editor** dialog.

Tools → Isotope Table...

Open the **Isotope Table** window.

Tools → Plot Data...

Open the **Plot Data** dialog.

Tools → Perform Calculation...

Open the **Perform Calculation** dialog.

Tools → R/S Phrases...

Open the **Risk/Security Phrases** dialog.

Tools → Glossary...

Open the **Glossary**.

Tools → Tables...

Display a dialog with the **Greek alphabet** and **Numeric Prefixes and Roman Numerals**.

5.1.4 The Settings and Help Menu

Kalzium has the common KDE **Settings** and **Help** menu items, for more information read the sections about the [Settings Menu](#) and [Help Menu](#) of the KDE Fundamentals.

Chapter 6

Questions and Answers

1. *Will I ever have to pay for Kalzium?*

No, never. But the author always welcomes a nice mail or a DVD as a 'Thank You'. Kalzium is licensed under the [GPL](#), so you will never have to pay for this program.

Chapter 7

How can I contribute?

1. *Support me with data.*

In the world of science, the progress is quite fast. If you ever find an incorrect or missing value, please drop me an email.

2. *Find some bugs or give some suggestions.*

If you find any bugs in the program, or have a few suggestions for improvements, please let me know at cniehaus@kde.org.

Chapter 8

Credits and License

Kalzium

Program Copyright, 2001-2005 Carsten Niehaus cniehaus@kde.org

Contributors:

- Pino Toscano toscano.pino@tiscali.it

This documentation is licensed under the terms of the [GNU Free Documentation License](#).

This program is licensed under the terms of the [GNU General Public License](#).