

# The KPager Handbook

**Dirk Doerflinger, Antonio Larrosa Jiménez,  
Matthias Elter, and Matthias Etrich**



# The KPager Handbook

# Contents

<b>1</b>	<b>Introduction</b>	<b>1</b>
<b>2</b>	<b>Using KPager</b>	<b>2</b>
2.1	More KPager features . . . . .	2
<b>3</b>	<b>Command Reference</b>	<b>3</b>
3.1	The main KPager window . . . . .	3
3.1.1	Using the mouse . . . . .	3
3.1.2	The Context Menu . . . . .	3
3.2	The Settings Dialog . . . . .	4
<b>4</b>	<b>Questions and Answers</b>	<b>6</b>
<b>5</b>	<b>Credits and License</b>	<b>7</b>
<b>A</b>	<b>Installation</b>	<b>8</b>
A.1	How to obtain KPager . . . . .	8
A.2	Requirements . . . . .	8
A.3	Compilation and Installation . . . . .	8

### **Abstract**

KPager gives you a thumbnail view of all virtual desktops.

## Chapter 1

# Introduction

KPager gives you a thumbnail sketch of all your desktops. It is a handy tool to let you see, resize or close windows on any desktop and move windows around within or between desktops.

## Chapter 2

# Using KPager



### 2.1 More KPager features

KPager can show all virtual desktops and the applications within them. It can be used to chose an application or even to move applications within virtual desktops or to others.

## Chapter 3

# Command Reference

### 3.1 The main KPager window

#### 3.1.1 Using the mouse

In KPager you can activate applications by clicking them with the left button.

The middle button of the mouse can be used for dragging applications within KPager. Applications can either be moved within a virtual desktop or to another one.

Clicking the right mouse button anywhere in KPager will open a context menu.

#### 3.1.2 The Context Menu

The context menu depends on where the right mouse button is clicked: If it is clicked on the empty background of KPager, it only has two items: **Configure KPager** and **Quit**. Otherwise, if clicked on a window, there are also the name and the icon of the application, and **Minimize**, **Maximize**, **To Desktop** and **Close** are displayed. See below for a detailed description of the menu items.

**Maximize** Maximizes the application window to the whole desktop. This item only appears if right clicked on an application window.

**Minimize** Iconifies the application. This item only appears if right clicked on an application window.

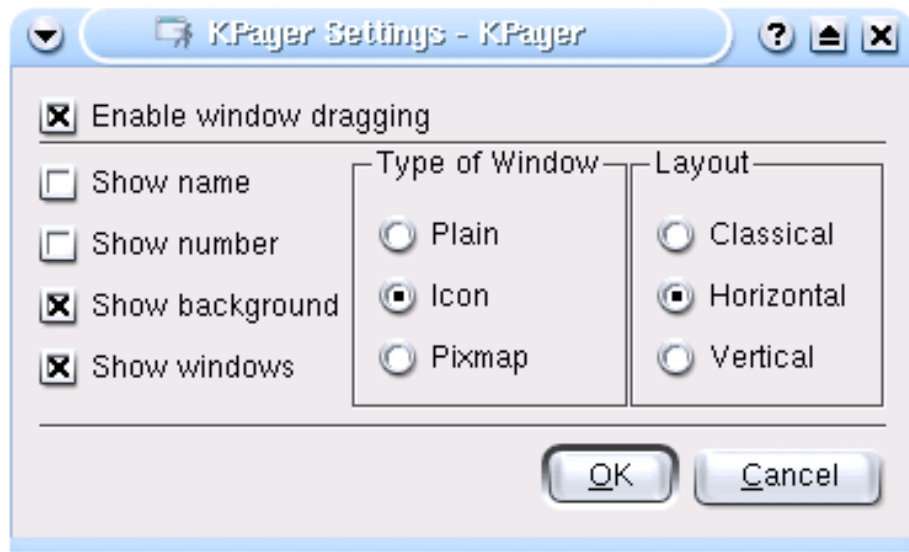
**To Desktop** Sends the application window to the chosen virtual desktop. This item only appears if right clicked on an application window.

**Close** Closes the clicked application. This item only appears if right clicked on an application window.

**Configure Pager** Opens the [settings dialog](#).

**Quit** Quits KPager.

## 3.2 The Settings Dialog



In the settings dialog you will find five check boxes and two groups of radio buttons.

**Enable Window Dragging** If this box is checked, you can drag windows inside of KPager with the middle mouse button. Windows can be dragged over the desktop or even to another desktop.

**Show Name** If this box is checked, the names of the desktops are shown in the main view of KPager.

**Show Number** If this box is checked, the numbers of the desktops are shown in the main view of KPager. If it is checked together with the Show Name box, the name is displayed with ordinals, e.g. 1. Desktop.

**Show Background** If this box is checked, the wallpaper of each desktop - if set - will be shown as backgrounds in KPager, too.

**Show Windows** If this box is checked, the applications on the desktops are shown in KPager as small views. Otherwise, KPager will remain empty, just for choosing the virtual desktops.

**Type of Window** This group of radio buttons sets the kind of view for the application window views. Plain will show just empty rectangles with the

## The KPager Handbook

proportions of the application window, Icon will show them with their standard icon and Pixmap with a small view of the contents of the application window. Note that using the pixmap mode is only recommended for very fast machines.

**Layout** In this group the layout of the KPager main view can be set. Classical will show KPager in a 2xn grid like pager applications in some other window managers, Horizontal will show the virtual desktops in a horizontal view and Vertical in a vertical row, which may perfectly fit on the side of the desktop.

## Chapter 4

# Questions and Answers

1. *Why could I need KPager?*

KPager can be used as an alternative to the pager applet in the panel. It has the advantage of being resizable and within this able to show icon or pixmap views of the running applications, move the windows across desktops and run outside of the panel.

2. *How can I change the behavior of KPager?*

Clicking the right mouse button anywhere within KPager lets you chose Configure from the context menu for displaying the [settings dialog](#)

3. *Windows are transparent by default, how do I turn this off?*

Currently, you cannot turn that option off within the config dialog, but you can do it manually like this: Open the file `$KDEHOME/share/config-/kpagerrc` with any text editor like KEdit or vi. If you have no rights to write that file, you may need to do it as root or contact your system administrator. In this file you will have to add a new key with the name `windowTransparentMode` with a number as value. Values are:

0 - No transparent windows at all.

1 - Only maximized windows are transparent.

2 - all windows are transparent (default).

## Chapter 5

# Credits and License

KPager

Program copyright 2000 Antonio Larrosa [larrosa@kde.org](mailto:larrosa@kde.org)

Documentation copyright 2000 by Dirk Doerflinger [ddoerflinger@web.de](mailto:ddoerflinger@web.de)

This documentation is licensed under the terms of the [GNU Free Documentation License](#).

This program is licensed under the terms of the [GNU General Public License](#).

# Appendix A

## Installation

### A.1 How to obtain KPager

KPager is part of the KDE project <http://www.kde.org/> .

KPager can be found in the kdebase package on <ftp://ftp.kde.org/pub/kde/> , the main FTP site of the KDE project.

### A.2 Requirements

As KPager is part of the kdebase package, you will just need an installation of the main KDE packages.

### A.3 Compilation and Installation

In order to compile and install KPager on your system, type the following in the base directory of the KPager distribution:

```
% ./configure
% make
% make install
```

Since KPager uses **autoconf** and **automake** you should have no trouble compiling it. Should you run into problems please report them to the KDE mailing lists.